

Oklahoma Corporation Commission  
Oil & Gas Conservation Division  
Post Office Box 52000  
Oklahoma City, Oklahoma 73152-2000  
Rule 165: 10-3-25

Form 1002A

API No.: 35109208580003

**Completion Report**

Spud Date: November 01, 1983

OTC Prod. Unit No.:

Drilling Finished Date: November 18, 1983

**Amended**

1st Prod Date: February 13, 1984

Amend Reason: RECOMPLETION

Completion Date: February 13, 1984

Recomplete Date: April 05, 2019

**Drill Type: STRAIGHT HOLE**

Well Name: PATRICK-JESS 2

Purchaser/Measurer:

Location: OKLAHOMA 4 14N 3W  
C SE NE  
660 FSL 1980 FWL of 1/4 SEC  
Derrick Elevation: 1059 Ground Elevation: 1051

First Sales Date:

Operator: GLB EXPLORATION INC 18634

7716 MELROSE LN  
OKLAHOMA CITY, OK 73127-6002

Completion Type		Location Exception		Increased Density	
X	Single Zone	Order No		Order No	
	Multiple Zone	There are no Location Exception records to display.		There are no Increased Density records to display.	
	Commingled				

Casing and Cement							
Type	Size	Weight	Grade	Feet	PSI	SAX	Top of CMT
SURFACE	8 5/8	24	J-55	835			SURFACE
PRODUCTION	5 1/2	15.5	J-55	5466			4920

Liner								
Type	Size	Weight	Grade	Length	PSI	SAX	Top Depth	Bottom Depth
There are no Liner records to display.								

**Total Depth: 6470**

Packer		Plug	
Depth	Brand & Type	Depth	Plug Type
There are no Packer records to display.		5800	CEMENT

Initial Test Data										
Test Date	Formation	Oil BBL/Day	Oil-Gravity (API)	Gas MCF/Day	Gas-Oil Ratio Cu FT/BBL	Water BBL/Day	Pumpin or Flowing	Initial Shut-In Pressure	Choke Size	Flow Tubing Pressure
Apr 10, 2019	CLEVELAND									

Completion and Test Data by Producing Formation			
Formation Name: CLEVELAND		Code: 405CLVD	Class: DRY
<b>Spacing Orders</b>		<b>Perforated Intervals</b>	
<b>Order No</b>	<b>Unit Size</b>	<b>From</b>	<b>To</b>
153452	80	5335	5345
<b>Acid Volumes</b>		<b>Fracture Treatments</b>	
672 GALLONS 7 1/2 NEFE HCL		NO	

Formation	Top
CLEVELAND	5335

Were open hole logs run? No  
Date last log run:  
  
Were unusual drilling circumstances encountered? No  
Explanation:

Other Remarks
There are no Other Remarks.

FOR COMMISSION USE ONLY	
Status: Accepted	1142617

API NO. 109-20858  
OTC PROD. UNIT NO. 109-79535

PLEASE TYPE OR USE BLACK INK ONLY)

OKLAHOMA CORPORATION COMMISSION

Oil & Gas Conservation Division

Post Office Box 52000

Oklahoma City, Oklahoma 73152-2000

Rule 165:10-3-25

COMPLETION REPORT

RECEIVED

APR 15 2019

Oklahoma Corporation Commission

640 Acres

ORIGINAL  
AMENDED (Reason)

Recompletion

TYPE OF DRILLING OPERATION

STRAIGHT HOLE DIRECTIONAL HOLE HORIZONTAL HOLE  
SERVICE WELL

If directional or horizontal, see reverse for bottom hole location.

COUNTY OKLAHOMA SEC 4 TWP 14N RGE 3W  
LEASE NAME PATRICK-JESS  
C 1/4 SE 1/4 NE 1/4 1/4 FSL OF 1/4 SEC 660 FWL OF 1/4 SEC 1980  
ELEVATION Derrick FL 1059 Ground 1051 Latitude (if known) Longitude (if known)  
OPERATOR NAME GLB EXPLORATION, INC. OTC / OCC OPERATOR NO. 18634-0  
ADDRESS 7716 MELROSE LANE  
CITY OKLAHOMA CITY STATE OK ZIP 73127

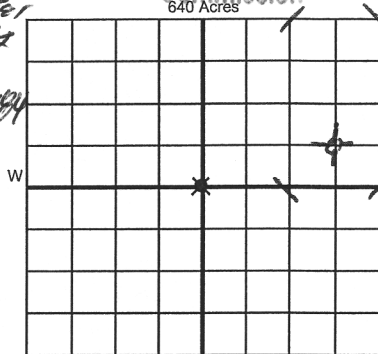
SPUD DATE 11-1-1983

DRLG FINISHED DATE 11-18-1983

DATE OF WELL COMPLETION 4/11/92-13-1984

1st PROD DATE 2-13-1983

RECOMP DATE 4/15/19



LOCATE WELL

COMPLETION TYPE

SINGLE ZONE  
MULTIPLE ZONE  
Application Date  
COMMINGLED  
Application Date  
LOCATION EXCEPTION  
ORDER NO.  
INCREASED DENSITY  
ORDER NO.

CASING & CEMENT (Attach Form 1002C)

TYPE	SIZE	WEIGHT	GRADE	FEET	PSI	SAX	TOP OF CMT
CONDUCTOR							
SURFACE	8 5/8	24	J-55	835 IN Place			Surface
INTERMEDIATE							
PRODUCTION	5 1/2	15.5	J-55	5466 IN Place			4920
LINER							
TOTAL DEPTH							6470

PACKER @ BRAND & TYPE PLUG @ 5800 TYPE Cement Plug  
PACKER @ BRAND & TYPE PLUG @ TYPE PLUG @ TYPE

COMPLETION & TEST DATA BY PRODUCING FORMATION

FORMATION	Cleveland					No Frac
SPACING & SPACING						
ORDER NUMBER	80-153452					
CLASS: Oil, Gas, Dry, Inj, Disp, Comm Disp, Svc	Dry					
PERFORATED INTERVALS	5335-40 5342-45					
ACID/VOLUME	672 gallons 7 1/2 NE FE HEL					
FRACTURE TREATMENT (Fluids/Prop Amounts)	NO					

Min Gas Allowable (165:10-17-7)

Gas Purchaser/Measurer

INITIAL TEST DATA

OR  
Oil Allowable (165:10-13-3)

First Sales Date

INITIAL TEST DATE	4/10/19				
OIL-BBL/DAY	0				
OIL-GRAVITY ( API)	—				
GAS-MCF/DAY	0				
GAS-OIL RATIO CU FT/BBL	—				
WATER-BBL/DAY	0				
PUMPING OR FLOWING	—				
INITIAL SHUT-IN PRESSURE	0				
CHOKE SIZE	—				
FLOW TUBING PRESSURE	—				

AS SUBMITTED

A record of the formations drilled through, and pertinent remarks are presented on the reverse. I declare that I have knowledge of the contents of this report and am authorized by my organization to make this report, which was prepared by me or under my supervision and direction, with the data and facts stated herein to be true, correct, and complete to the best of my knowledge and belief.

SIGNATURE Glenn Blumstein DATE 4/11/19 PHONE NUMBER 405-787-049  
ADDRESS 7716 MELROSE LANE CITY OK STATE OK ZIP 73127 EMAIL ADDRESS glb@glbexploration.com

PLEASE TYPE OR USE BLACK INK ONLY  
FORMATION RECORD

Give formation names and tops, if available, or descriptions and thickness of formations drilled through. Show intervals cored or drillstem tested.

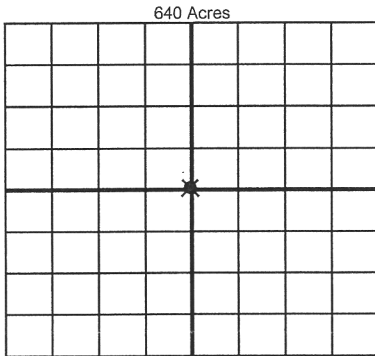
NAMES OF FORMATIONS	TOP
Cleveland	5335

LEASE NAME PATRICK-JESS WELL NO. 2

FOR COMMISSION USE ONLY	
ITD on file <input type="checkbox"/> YES <input type="checkbox"/> NO	
APPROVED _____	DISAPPROVED _____
2) Reject Codes	

Were open hole logs run?	yes	<input checked="" type="checkbox"/> no
Date Last log was run	_____	
Was CO <sub>2</sub> encountered?	yes	<input checked="" type="checkbox"/> no at what depths? _____
Was H <sub>2</sub> S encountered?	yes	<input checked="" type="checkbox"/> no at what depths? _____
Were unusual drilling circumstances encountered?	yes	<input checked="" type="checkbox"/> no
If yes, briefly explain below		

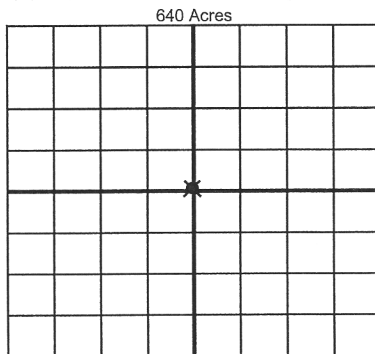
Other remarks:



If more than three drainholes are proposed, attach a separate sheet indicating the necessary information.

Direction must be stated in degrees azimuth. Please note, the horizontal drainhole and its end point must be located within the boundaries of the lease or spacing unit.

Directional surveys are required for all drainholes and directional wells.



BOTTOM HOLE LOCATION FOR DIRECTIONAL HOLE

SEC	TWP	RGE	COUNTY
Spot Location		Feet From 1/4 Sec Lines	
1/4	1/4	1/4	1/4
Measured Total Depth		True Vertical Depth	
BHL From Lease, Unit, or Property Line:			

BOTTOM HOLE LOCATION FOR HORIZONTAL HOLE: (LATERALS)

LATERAL #1

SEC	TWP	RGE	COUNTY
Spot Location		Feet From 1/4 Sec Lines	
1/4	1/4	1/4	1/4
Depth of Deviation		Radius of Turn	
Measured Total Depth		True Vertical Depth	
BHL From Lease, Unit, or Property Line:			

LATERAL #2

SEC	TWP	RGE	COUNTY
Spot Location		Feet From 1/4 Sec Lines	
1/4	1/4	1/4	1/4
Depth of Deviation		Radius of Turn	
Measured Total Depth		True Vertical Depth	
BHL From Lease, Unit, or Property Line:			

LATERAL #3

SEC	TWP	RGE	COUNTY
Spot Location		Feet From 1/4 Sec Lines	
1/4	1/4	1/4	1/4
Depth of Deviation		Radius of Turn	
Measured Total Depth		True Vertical Depth	
BHL From Lease, Unit, or Property Line:			