

Oklahoma Corporation Commission
Oil & Gas Conservation Division
Post Office Box 52000
Oklahoma City, Oklahoma 73152-2000
Rule 165: 10-3-25

Form 1002A

API No.: 35133245250002

Completion Report

Spud Date: June 01, 2005

OTC Prod. Unit No.: 133-116238

Drilling Finished Date: June 09, 2005

Amended

1st Prod Date: July 22, 2005

Amend Reason: RECOMPLETION

Completion Date: July 08, 2005

Recomplete Date: March 01, 2019

Drill Type: STRAIGHT HOLE

Well Name: MS DONNA 1-15

Purchaser/Measurer:

Location: SEMINOLE 15 9N 7E
SW NE NW SE
2130 FSL 700 FWL of 1/4 SEC
Latitude: 35.252389 Longitude: -96.553527
Derrick Elevation: 1030 Ground Elevation: 1020

First Sales Date:

Operator: XANADU EXPLORATION COMPANY 19754

320 S BOSTON AVE STE 2000
TULSA, OK 74103-4709

Completion Type	
X	Single Zone
	Multiple Zone
	Commingled

Location Exception
Order No
507060

Increased Density
Order No
There are no Increased Density records to display.

Casing and Cement							
Type	Size	Weight	Grade	Feet	PSI	SAX	Top of CMT
SURFACE	8 5/8	23	NEW	720		400	SURFACE
PRODUCTION	5 1/2	15.5	J-55	4304		200	1042

Liner								
Type	Size	Weight	Grade	Length	PSI	SAX	Top Depth	Bottom Depth
There are no Liner records to display.								

Total Depth: 4300

Packer	
Depth	Brand & Type
There are no Packer records to display.	

Plug	
Depth	Plug Type
4065	CIBP

Initial Test Data

Test Date	Formation	Oil BBL/Day	Oil-Gravity (API)	Gas MCF/Day	Gas-Oil Ratio Cu FT/BBL	Water BBL/Day	Pumpin or Flowing	Initial Shut-In Pressure	Choke Size	Flow Tubing Pressure
Mar 01, 2019	UNION VALLEY	10		30	3000	100	PUMPING			

Completion and Test Data by Producing Formation					
Formation Name: UNION VALLEY		Code: 402UNVL		Class: OIL	
Spacing Orders		Perforated Intervals			
Order No	Unit Size	From		To	
505209	160	3474		3484	
Acid Volumes		Fracture Treatments			
750 GALLONS 15% HCL		NONE			

Formation	Top
SEE ORIGINAL	0

Were open hole logs run? Yes

Date last log run: June 09, 2005

Were unusual drilling circumstances encountered? No

Explanation:

Other Remarks
There are no Other Remarks.

FOR COMMISSION USE ONLY	
Status: Accepted	1142666

NO. 133-24520
OTC PROD. 133-116238
UNIT NO.

NOTE:
Attach a copy of the original 1002A
if this is a recompletion or reentry.

OKLAHOMA CORPORATION COMMISSION
Oil & Gas Conservation Division
Post Office Box 52000
Oklahoma City, Oklahoma 73152-2000
Rule 165-10-3-25

Rev. 2009

☐ ORIGINAL
☒ AMENDED (Reason)

Recompletion

COMPLETION REPORT

TYPE OF DRILLING OPERATION

☒ STRAIGHT HOLE ☐ DIRECTIONAL HOLE ☐ HORIZONTAL HOLE
☐ SERVICE WELL

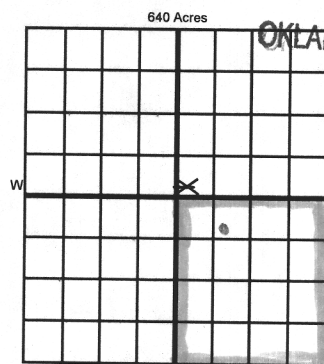
If directional or horizontal, see reverse for bottom hole location.

COUNTY	Seminole	SEC	15	TWP	9N	RGE	7E
LEASE NAME	Ms. Donna			WELL NO.	#1-15		
SW 1/4 NE 1/4 NW 1/4 SE 1/4	FSL OF 2130			FWL OF 700	1st PROD DATE 7/22/2005		
ELEVATION 1030'	Ground 1020'	Latitude (if known)	35.252389		Longitude (if known)	-96.553527	
OPERATOR NAME	Xanadu Exploration Company			OTC / OCC OPERATOR NO.	19754		
ADDRESS	320 S. Boston Ave., Suite 2000						
CITY	Tulsa		STATE	OK		ZIP	74103

If unable to print form correctly,
click "Page Layout" and decrease
the "Scale" as needed (try 85% first)
to print correctly.

RECEIVED

APR 17 2019



COMPLETION TYPE

<input checked="" type="checkbox"/> SINGLE ZONE	
<input type="checkbox"/> MULTIPLE ZONE	
Application Date	
COMINGLED	
Application Date	
LOCATION EXCEPTION ORDER NO.	507060
INCREASED DENSITY ORDER NO.	

CASING & CEMENT (Attach Form 1002C)

TYPE	SIZE	WEIGHT	GRADE	FEET	PSI	SAX	TOP OF CMT
CONDUCTOR							
SURFACE	8 5/8"	23	X new	720		400	surface
INTERMEDIATE							
PRODUCTION	5 1/2"	15.5	J-55	4304		200	1042
LINER							

LOCATE WELL
You can mouse-drag (or hold down "CTRL" key and use "arrow" keys)
to move red dot from center of grid above to spot the well

PACKER @ BRAND & TYPE
PACKER @ BRAND & TYPE

PLUG @ 4,065' TYPE CIBP
PLUG @ TYPE
PLUG @ TYPE
TOTAL DEPTH 4300'

COMPLETION & TEST DATA BY PRODUCING FORMATION

FORMATION	Hunton	Union Valley					
SPACING & SPACING	505209 (160 acres)	505209 (160 acres)					
ORDER NUMBER							
CLASS: Oil, Gas, Dry, Inj.							
Disp. Comm Disp, Svc							
	4111'-4221'	3474'-3484'					
PERFORATED INTERVALS							
ACID/VOLUME	1000 gal 15% HCl	750 gal 15% HCl					
	40,000 gal H2O and 2,000 gal 15% HCl						
FRACTURE TREATMENT (Fluids/Prop Amounts)	12,000 gal stick acid and 2,000 gal zonal acid	None					

Min Gas Allowable (165-10-17-7)
OR
Oil Allowable (165-10-13-3)

Gas Purchaser/Measurer
First Sales Date

INITIAL TEST DATA

INITIAL TEST DATE	7/22/2005	3/1/2019				
OIL-BBL/DAY	11	10				
OIL-GRAVITY (API)						
GAS-MCF/DAY	42	30				
GAS-OIL RATIO CU FT/BBL		3000				
WATER-BBL/DAY	500	100				
PUMPING OR FLOWING	pumping	pumping				
INITIAL SHUT-IN PRESSURE						
CHOKE SIZE						
FLOW TUBING PRESSURE						

A record of the formations drilled through, and pertinent remarks are presented on the reverse. I declare that I have knowledge of the contents of this report and am authorized by my organization to make this report, which was prepared by me or under my supervision and direction, with the data and facts stated herein to be true, correct, and complete to the best of my knowledge and belief.

SIGNATURE: Ammie Addison
NAME (PRINT OR TYPE): Ammie Addison
DATE: 4/15/2019
PHONE NUMBER: (918)584-3802
ADDRESS: 320 S. Boston Ave., Suite 2000
CITY: Tulsa
STATE: OK
ZIP: 74103
EMAIL ADDRESS: ammiea@xanexp.com

AS SUBMITTED

FORMATION RECORD

Give formation names and tops, if available, or descriptions and thickness of formations drilled through. Show intervals cored or drillstem tested.

LEASE NAME

WELL NO.

NAMES OF FORMATIONS	TOP
see original	

FOR COMMISSION USE ONLY	
ITD on file	<input type="checkbox"/> YES <input type="checkbox"/> NO
APPROVED	DISAPPROVED
2) Reject Codes	

Were open hole logs run?	<input checked="" type="checkbox"/> yes <input type="checkbox"/> no	per original 1002A
Date Last log was run	6-9-2005	
Was CO ₂ encountered?	<input type="checkbox"/> yes <input checked="" type="checkbox"/> no	at what depths?
Was H ₂ S encountered?	<input type="checkbox"/> yes <input checked="" type="checkbox"/> no	at what depths?
Were unusual drilling circumstances encountered?	yes <input checked="" type="checkbox"/> no	
If yes, briefly explain below:		

Other remarks:

You can mouse-drag (or hold down "CTRL" key and use "arrow" keys) to move red dots from center of grids below to spot bottom hole locations

640 Acres

If more than three drainholes are proposed, attach a separate sheet indicating the necessary information.

Direction must be stated in degrees azimuth.
Please note, the horizontal drainhole and its end point must be located within the boundaries of the lease or spacing unit.

Directional surveys are required for all drainholes and directional wells.

640 Acres

BOTTOM HOLE LOCATION FOR DIRECTIONAL HOLE

SEC	TWP	RGE	COUNTY
Spot Location			
1/4	1/4	1/4	1/4
Measured Total Depth		True Vertical Depth	Feet From 1/4 Sec Lines
			FSL
			FWL
BHL From Lease, Unit, or Property Line:			

BOTTOM HOLE LOCATION FOR HORIZONTAL HOLE: (LATERALS)

LATERAL #1

SEC	TWP	RGE	COUNTY
Spot Location			
1/4	1/4	1/4	1/4
Depth of Deviation		Radius of Turn	Direction
Measured Total Depth		True Vertical Depth	Total Length
			BHL From Lease, Unit, or Property Line:

LATERAL #2

SEC	TWP	RGE	COUNTY
Spot Location			
1/4	1/4	1/4	1/4
Depth of Deviation		Radius of Turn	Direction
Measured Total Depth		True Vertical Depth	Total Length
			BHL From Lease, Unit, or Property Line:

LATERAL #3

SEC	TWP	RGE	COUNTY
Spot Location			
1/4	1/4	1/4	1/4
Depth of Deviation		Radius of Turn	Direction
Measured Total Depth		True Vertical Depth	Total Length
			BHL From Lease, Unit, or Property Line: