

Oklahoma Corporation Commission  
Oil & Gas Conservation Division  
Post Office Box 52000  
Oklahoma City, Oklahoma 73152-2000  
Rule 165: 10-3-25

Form 1002A

API No.: 35093250450001

**Completion Report**

Spud Date: December 12, 2016

OTC Prod. Unit No.: 093-218458

Drilling Finished Date: December 25, 2016

**Amended**

1st Prod Date: February 03, 2017

Amend Reason: RECLASSIFYING AS GAS WELL AND REMOVED PACKER AND  
CORRECTED CIBP DEPTH

Completion Date: January 18, 2017

Recomplete Date: December 11, 2018

**Drill Type: HORIZONTAL HOLE**

Well Name: SMITH 18-20-13 1H

Purchaser/Measurer:

Location: MAJOR 18 20N 13W  
SW SW SE SW  
160 FSL 1350 FWL of 1/4 SEC  
Derrick Elevation: 1761 Ground Elevation: 1736

First Sales Date:

Operator: CHESAPEAKE OPERATING LLC 17441  
PO BOX 18496  
6100 N WESTERN AVE  
OKLAHOMA CITY, OK 73154-0496

Completion Type		Location Exception		Increased Density	
X	Single Zone	Order No		Order No	
	Multiple Zone	661525		659338	
	Commingled				

Casing and Cement							
Type	Size	Weight	Grade	Feet	PSI	SAX	Top of CMT
SURFACE	9 5/8	36	J-55	1512		675	SURFACE
PRODUCTION	5 1/2	20	P-110HC	13745		1185	5532

Liner								
Type	Size	Weight	Grade	Length	PSI	SAX	Top Depth	Bottom Depth
There are no Liner records to display.								

**Total Depth: 13745**

Packer	
Depth	Brand & Type
There are no Packer records to display.	

Plug	
Depth	Plug Type
13620	CIBP
13637	CIBP
13639	CIBP

Initial Test Data
-------------------

Test Date	Formation	Oil BBL/Day	Oil-Gravity (API)	Gas MCF/Day	Gas-Oil Ratio Cu FT/BBL	Water BBL/Day	Pumpin or Flowing	Initial Shut-In Pressure	Choke Size	Flow Tubing Pressure
Mar 16, 2019	MISSISSIPPI SOLID	8		167	20875	82	ARTIFICIA			94

<b>Completion and Test Data by Producing Formation</b>	
Formation Name: MISSISSIPPI SOLID	Code: 351MSSSD
Class: GAS	

Spacing Orders	
Order No	Unit Size
131907	640

Perforated Intervals	
From	To
8930	13605

Acid Volumes	
There are no Acid Volume records to display.	

Fracture Treatments	
There are no Fracture Treatments records to display.	

Formation	Top
MISSISSIPPI SOLID	8907

Were open hole logs run? No

Date last log run:

Were unusual drilling circumstances encountered? No

Explanation:

<b>Other Remarks</b>
There are no Other Remarks.

<b>Lateral Holes</b>
Sec: 18 TWP: 20N RGE: 13W County: MAJOR  NE   NW   NW   NW  61 FNL   445 FWL of 1/4 SEC  Depth of Deviation: 8397 Radius of Turn: 199 Direction: 2 Total Length: 4838  Measured Total Depth: 13745 True Vertical Depth: 8596 End Pt. Location From Release, Unit or Property Line: 61

<b>FOR COMMISSION USE ONLY</b>	
Status: Accepted	1142648

API NO. 093-25045  
OTC PROD. UNIT NO. 093-218458

PLEASE TYPE OR USE BLACK INK ONLY  
NOTE: Attach copy of original 1002A if recompletion or reentry.

OKLAHOMA CORPORATION COMMISSION  
Oil & Gas Conservation Division  
Post Office Box 52000  
Oklahoma City, Oklahoma 73152-2000  
Rule 165:10-3-25

RECEIVED  
APR 16 2019  
Oklahoma Corporation  
Commission

Form 1002A  
Rev. 2009

ORIGINAL  
☒ AMENDED  
Reason Amended Reclassifying as gas well & see remarks

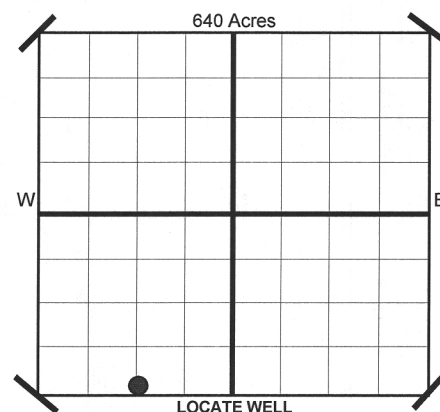
TYPE OF DRILLING OPERATION

☐ STRAIGHT HOLE ☐ DIRECTIONAL HOLE ☒ HORIZONTAL HOLE  
If directional or horizontal, see reverse for bottom hole location.

COUNTY	Major	SEC	18	TWP	20N	RGE	13W
LEASE NAME	Smith 18-20-13			WELL NO	1H		
SHL	SW 1/4	SW 1/4	SE 1/4	SW 1/4	FSL	FWL OF	1/4 SEC
ELEVATION	1,761			Ground	1,736		
Derrick Fl	1,761			Ground	1,736		
OPERATOR NAME	CHESAPEAKE OPERATING, L.L.C.			OTC/OCC OPERATOR NO.	17441		
ADDRESS	P.O. BOX 18496						
CITY	OKLAHOMA CITY			STATE	OK		ZIP
							73154

COMPLETION REPORT

SPUD DATE	12/12/2016
DRLG FINISHED DATE	12/25/2016
DATE OF WELL COMPLETION	1/18/2017
1ST PROD DATE	2/3/2017
RECOMP DATE	12/11/2018



COMPLETION TYPE

<input checked="" type="checkbox"/> SINGLE ZONE	
<input type="checkbox"/> MULTIPLE ZONE	
Application Date	
COMINGLED	
Application Date	
LOCATION EXCEPTION ORDER NO.	661525
INCREASED DENSITY ORDER NO.	659338

CASING & CEMENT (Form 1002C must be attached)

TYPE	SIZE	WEIGHT	GRADE	FEET	PSI	SAX	TOP
CONDUCTOR							
SURFACE	9-5/8"	36#	J-55	1,512		675	Surface
INTERMEDIATE							
PRODUCTION	5-1/2"	20#	P-110HC	13,745		1,185	5,532
LINER							

PACKER @	BRAND & TYPE	PLUG @	13,620	TYPE	CIBP	PLUG @	13,637	TYPE	CIBP	TOTAL DEPTH	13,745
PACKER @	BRAND & TYPE	PLUG @		TYPE		PLUG @	13,639	TYPE	CIBP		

COMPLETION & TEST DATA BY PRODUCING FORMATION

FORMATION	Mississippi Solid					
SPACING & SPACING ORDER NUMBER	640 131907					
CLASS: Oil, Gas, Dry, Inj. Disp, Comm Disp, Svc	Gas					
PERFORATED INTERVALS	8,930 - 13,605					
ACID/VOLUME						
FRACTURE TREATMENT (Fluids/Prop Amounts)						

Minimum Gas Allowable (165:10-17-7)

Gas Purchaser/Measurer

OR

1st Sales Date

INITIAL TEST DATA

INITIAL TEST DATE	3/16/2019					
OIL-BBL/DAY	8					
OIL-GRAVITY ( API)						
GAS-MCF/DAY	167					
GAS-OIL RATIO CU FT/BBL	20,875					
WATER-BBL/DAY	82					
PUMPING OR FLOWING	Artificial Lift					
INITIAL SHUT-IN PRESSURE						
CHOKE SIZE						
FLOW TUBING PRESSURE	94					

AS SUBMITTED

A record of the formations drilled through, and pertinent remarks are presented on the reverse. I declare that I have knowledge of the contents of this report and am authorized by my organization to make this report, which was prepared by me or under my supervision and direction, with the data and facts stated herein to be true, correct, and complete to the best of my knowledge and belief.

SIGNATURE	JUANITA COOPER - REGULATORY SPECIALIST	DATE	4/15/2019	PHONE NUMBER	405-848-8000
P.O. BOX 18496	OKLAHOMA CITY	OK	73154	EMAIL ADDRESS	juanita.cooper@chk.com
ADDRESS	CITY	STATE	ZIP		

Give formation names and tops, if available, or descriptions and thickness of formations drilled through. Show intervals cored or drillstem tested.

WELL NO. 1H

NAMES OF FORMATIONS	TOP
Mississippi Solid	8,907

FOR COMMISSION USE ONLY		
ITD on file	<input type="checkbox"/> YES	<input type="checkbox"/> NO
APPROVED	DISAPPROVED	2) Reject Codes

Were open hole logs run?	<u>      </u> yes	<u>X</u> no
Date Last log was run	N/A	
Was CO <sub>2</sub> encountered?	<u>      </u> yes	<u>X</u> no at what depths?
Was H <sub>2</sub> S encountered?	<u>      </u> yes	<u>X</u> no at what depths?
Were unusual drilling circumstances encountered?	<u>      </u> yes	<u>X</u> no
If yes, briefly explain.		

Other remarks:	Removed packer and corrected CIBP depth
----------------	---

640 Acres

Direction must be stated in degrees azimuth.  
Please note, the horizontal drainhole and its end point must be located within the boundaries of the lease or spacing unit.

**Directional surveys are required for all drainholes and directional wells.**  
640 Acres

SEC	TWP	RGE	COUNTY			
Spot Location				Feet From 1/4 Sec Lines	FSL	FWL
1/4	1/4	1/4	1/4			
Measured Total Depth		True Vertical Depth		BHL From Lease, Unit, or Property Line:		

SEC 18	TWP 20N	RGE 13W	COUNTY			
Spot Location			Major			
NE 1/4	NW 1/4	NW 1/4	NW 1/4	Feet From 1/4 Sec Lines	FNL 61	FWL 445
Depth of Deviation 8,397		Radius of Turn 199		Direction 2	Total Length 4,838	
Measured Total Depth 13.745		True Vertical Depth 8.596		BHL From Lease, Unit, or Property Line: 61		

SEC	TWP	RGE	COUNTY			
Spot Location				Feet From 1/4 Sec Lines	FSL	FWL
1/4	1/4	1/4	1/4			
Depth of Deviation		Radius of Turn	Direction	Total Length		
Measured Total Depth		True Vertical Depth	BHL From Lease, Unit, or Property Line:			

SEC	TWP	RGE	COUNTY			
Spot Location 1/4	1/4	1/4	1/4	Feet From 1/4 Sec Lines	FSL	FWL
Depth of Deviation		Radius of Turn		Direction	Total Length	
Measured Total Depth		True Vertical Depth		BHL From Lease, Unit, or Property Line:		

3/16/2019

Check allowable ✓

Oklahoma Corporation Commission  
Oil & Gas Conservation Division  
Post Office Box 52000  
Oklahoma City, Oklahoma 73152-2000  
Rule 165: 10-3-25

Form 100

1002A  
Addendum

Paper 1002  
Rec'd 4-16-2019

## Completion Report

API No.: 093250450001

OTC Prod. Unit No.: 093-218458-0-0000 ✓

Spud Date: December 12, 2016

Drilling Finished Date: December 25, 2016

1st Prod Date: February 03, 2017

Completion Date: January 18, 2017

Recomplete Date: December 11, 2018

## Amended

Amend Reason: RECLASSIFYING AS GAS WELL AND REMOVED PACKER AND  
CORRECTED CIBP DEPTH

Drill Type: HORIZONTAL HOLE

A: 203382 S

Well Name: SMITH 18-20-13 1H

Purchaser/Measurer:

Location: MAJOR 18 20N 13W  
SW SW SE SW  
160 FSL 1350 FWL of 1/4 SEC  
Derrick Elevation: 1761 Ground Elevation: 1736

First Sales Date:

Reclassify on Test Date  
3-16-2019

Operator: CHESAPEAKE OPERATING LLC 17441  
PO BOX 18496  
6100 N WESTERN AVE  
OKLAHOMA CITY, OK 73154-0496

Completion Type		Location Exception		Increased Density	
X	Single Zone	Order No		Order No	
	Multiple Zone	661525		659338	
	Commingled				

Casing and Cement							
Type	Size	Weight	Grade	Feet	PSI	SAX	Top of CMT
SURFACE	9 5/8	36	J-55	1512		675	SURFACE
PRODUCTION	5 1/2	20	P-110HC	13745		1185	5532

Liner								
Type	Size	Weight	Grade	Length	PSI	SAX	Top Depth	Bottom Depth
There are no Liner records to display.								

Total Depth: 13745

Packer	
Depth	Brand & Type
There are no Packer records to display.	

Plug	
Depth	Plug Type
13620	CIBP
13637	CIBP
13639	CIBP

Initial Test Data

June 03, 2019

E2 3-16-19

357 MSSSD

IXMT-Artificial  
Lift

1 of 2

AP

Test Date	Formation	Oil BBL/Day	Oil-Gravity (API)	Gas MCF/Day	Gas-Oil Ratio Cu FT/BBL	Water BBL/Day	Pumpin or Flowing	Initial Shut-In Pressure	Choke Size	Flow Tubing Pressure
Mar 16, 2019	MISSISSIPPI SOLID	8		167	20875	82	ARTIFICIA			94

**Completion and Test Data by Producing Formation**

Formation Name: MISSISSIPPI SOLID

Code: 351MSSSD

Class: GAS

**Spacing Orders**

Order No	Unit Size
131907	640 (✓) ✓

**Perforated Intervals**

From	To
8930	13605

**Acid Volumes**

There are no Acid Volume records to display.

**Fracture Treatments**

There are no Fracture Treatments records to display.

Formation	Top
MISSISSIPPI SOLID	8907

Were open hole logs run? No

Date last log run:

Were unusual drilling circumstances encountered? No

Explanation:

**Other Remarks**

There are no Other Remarks.

**Lateral Holes**

Sec: 18 TWP: 20N RGE: 13W County: MAJOR

NE NW NW NW

61 FNL 445 FWL of 1/4 SEC

Depth of Deviation: 8397 Radius of Turn: 199 Direction: 2 Total Length: 4838

Measured Total Depth: 13745 True Vertical Depth: 8596 End Pt. Location From Release, Unit or Property Line: 61

**FOR COMMISSION USE ONLY**

1142648

Status: Accepted