

Oklahoma Corporation Commission  
Oil & Gas Conservation Division  
Post Office Box 52000  
Oklahoma City, Oklahoma 73152-2000  
Rule 165: 10-3-25

Form 1002A

API No.: 35073262460000

**Completion Report**

Spud Date: October 02, 2018

OTC Prod. Unit No.: 073-224557

Drilling Finished Date: October 12, 2018

1st Prod Date: November 09, 2018

Completion Date: November 01, 2018

**Drill Type:** HORIZONTAL HOLE

Min Gas Allowable: Yes

Well Name: MARTIN 34-19-6 1HC

Purchaser/Measurer: CHESAPEAKE OPERATING LLC

Location: KINGFISHER 34 19N 6W  
SE SE SW SW  
240 FSL 1058 FWL of 1/4 SEC  
Derrick Elevation: 1195 Ground Elevation: 1168

First Sales Date: 11/12/2018

Operator: CHESAPEAKE OPERATING LLC 17441  
PO BOX 18496  
6100 N WESTERN AVE  
OKLAHOMA CITY, OK 73154-0496

Completion Type		Location Exception		Increased Density	
X	Single Zone	Order No		Order No	
	Multiple Zone	688497		N/A	
	Commingled				

Casing and Cement								
Type		Size	Weight	Grade	Feet	PSI	SAX	Top of CMT
SURFACE		9 5/8	36	J-55	1488		595	SURFACE
PRODUCTION		7	26	P-110	6863		315	3283

Liner								
Type	Size	Weight	Grade	Length	PSI	SAX	Top Depth	Bottom Depth
LINER	4 1/2	13.50	P-110EC	7481	0	660	6600	14081

**Total Depth: 14083**

Packer		Plug	
Depth	Brand & Type	Depth	Plug Type
There are no Packer records to display.		There are no Plug records to display.	

Initial Test Data										
Test Date	Formation	Oil BBL/Day	Oil-Gravity (API)	Gas MCF/Day	Gas-Oil Ratio Cu FT/BBL	Water BBL/Day	Pumpin or Flowing	Initial Shut-In Pressure	Choke Size	Flow Tubing Pressure
Dec 31, 2018	OSWEGO	579	40.59	776	1340	670	PUMPING			119

Completion and Test Data by Producing Formation			
Formation Name: OSWEGO		Code: 404OSWG	Class: OIL
<b>Spacing Orders</b>		<b>Perforated Intervals</b>	
<b>Order No</b>	<b>Unit Size</b>	<b>From</b>	<b>To</b>
677982	480 IRREGULAR UNIT	6774	14005
<b>Acid Volumes</b>		<b>Fracture Treatments</b>	
450,054 GALLONS ACID		71,767 BARRELS FLUIDS, 150 POUNDS PROPPANT	

Formation	Top
OSWEGO	6718

Were open hole logs run? No  
Date last log run:  
  
Were unusual drilling circumstances encountered? No  
Explanation:

Other Remarks
OCC - THIS WELL IS DRILLED ON AN IRREGULAR UNIT COMPRISING WEST HALF SECTION 34 AND THE SW QUARTER SECTION 27 OF 19N-6W 480 ACRE SPACED UNIT.

Lateral Holes
Sec: 27 TWP: 19N RGE: 6W County: KINGFISHER  N2 N2 N2 SW  286 FNL 1320 FWL of 1/4 SEC  Depth of Deviation: 5595 Radius of Turn: 721 Direction: 2 Total Length: 7365  Measured Total Depth: 14083 True Vertical Depth: 6316 End Pt. Location From Release, Unit or Property Line: 286

FOR COMMISSION USE ONLY	
Status: Accepted	1141864



**PLEASE TYPE OR USE BLACK INK ONLY**  
FORMATION RECORD

Give formation names and tops, if available, or descriptions and thickness of formations drilled through. Show intervals cored or drillstem tested.

LEASE NAME Martin 34-19-6

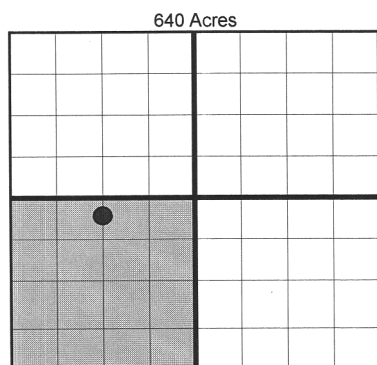
WELL NO. 1HC

NAMES OF FORMATIONS	TOP
Oswego	6,718

FOR COMMISSION USE ONLY	
ITD on file <input type="checkbox"/> YES <input type="checkbox"/> NO	
APPROVED _____	DISAPPROVED _____
2) Reject Codes	
_____	
_____	
_____	
_____	

Were open hole logs run?	yes <input type="checkbox"/> no <input checked="" type="checkbox"/>
Date Last log was run	N/A
Was CO <sub>2</sub> encountered?	yes <input type="checkbox"/> no <input checked="" type="checkbox"/> at what depths?
Was H <sub>2</sub> S encountered?	yes <input type="checkbox"/> no <input checked="" type="checkbox"/> at what depths?
Were unusual drilling circumstances encountered?	yes <input type="checkbox"/> no <input checked="" type="checkbox"/>
If yes, briefly explain.	

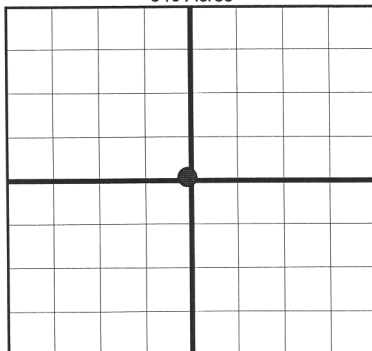
Other remarks:



If more than three drainholes are proposed, attach a separate sheet indicating the necessary information.

Direction must be stated in degrees azimuth. Please note, the horizontal drainhole and its end point must be located within the boundaries of the lease or spacing unit.

**Directional surveys are required for all drainholes and directional wells.**  
640 Acres



**BOTTOM HOLE LOCATION FOR DIRECTIONAL HOLE**

BOTTOM HOLE LOCATION FOR DIRECTIONAL HOLE						
SEC	TWP	RGE	COUNTY			
Spot Location				Feet From 1/4 Sec Lines	FSL	FWL
1/4	1/4	1/4	1/4			
Measured Total Depth		True Vertical Depth	BHL From Lease, Unit, or Property Line:			

**BOTTOM HOLE LOCATION FOR HORIZONTAL HOLE: (LATERALS)**

BOTTOM HOLE LOCATION FOR HORIZONTAL HOLE: (ELEVATION)									
LATERAL #1									
SEC	TWP	RGE	COUNTY	Kingfisher					
27	19N	6W							
Spot Location				Feet From 1/4 Sec Lines		FNL	286	FWL	1,320
N2 1/4		N2 1/4		N2 1/4 SW 1/4					
Depth of Deviation		Radius of Turn		Direction		Total Length			
5,595		721		2		7,365			
Measured Total Depth		True Vertical Depth		BHL From Lease, Unit, or Property Line:					
14.083		6.316		286					

**LATERAL #2**

CATALOG #2							
SEC	TWP		RGE		COUNTY		
Spot Location				Feet From 1/4 Sec Lines		FSL	FWL
1/4	1/4	1/4	1/4				
Depth of Deviation			Radius of Turn		Direction		Total Length
Measured Total Depth			True Vertical Depth		BHL From Lease, Unit, or Property Line:		

**LATERAL #3**

LATERAL #3						
SEC	TWP	RGE	COUNTY			
Spot Location				Feet From 1/4 Sec Lines	FSL	FWL
1/4	1/4	1/4	1/4			
Depth of Deviation	Radius of Turn		Direction		Total Length	
Measured Total Depth	True Vertical Depth		BHL From Lease, Unit, or Property Line:			

# CHESAPEAKE ENERGY

OPERATOR: CHESAPEAKE OPERATING, LLC

LEASE NAME: MARTIN 34-19-6

WELL NO. 1HC

STAKED DATE: 2/16/18

GROUND ELEVATION: 1167.74 GR. AT STAKE

SURFACE HOLE FOOTAGE: 240' FSL - 1058' FWL

SECTION: 34 TOWNSHIP: T19N RANGE: R6W

KINGFISHER COUNTY, STATE: OK

BOTTOM HOLE: 27-T19N-R6W-1.M.

BOTTOM HOLE FOOTAGE: 286' FNL - 1320' FWL

BOTTOM PERF FOOTAGE: 364' FNL - 1317' FWL

TOP PERF FOOTAGE: 340' FSL - 1292' FEL

PENETRATION POINT FOOTAGE: 285' FSL - 1292' FEL

ACCESSIBILITY TO LOCATION: FROM SOUTH LINE

TOPOGRAPHY & VEGETATION: LOCATION FELL ON THE SOUTH EDGE OF A FIELD.

**DISTANCE & DIRECTION FROM HWY JCT OR TOWN:**  
FROM THE TOWN OF HENNESSEY HEAD SOUTH ±2.5MI  
ON US-81 TO E0650RD, HEAD EAST ±3.5MI TO  
N2900RD, CONTINUE EAST ±0.2MI TO AN EXISTING  
LEASE ROAD ON THE NORTH, PAD SITE IS EAST OF  
LEASE ROAD.

## **SURFACE HOLE DATA**

STATE PLANE COORDINATES:

ZONE: OK-NORTH NAD27

X: 2049623.8

Y: 390781.1

GPS DATUM: NAD27

LAT: 36.07343384

LONG: -97.83208479

STATE PLANE COORDINATES:

ZONE: OK-NORTH NAD83

X: 2018024.4

Y: 390805.3

GPS DATUM: NAD83

LAT: 36.07347267

LONG: -97.83241681

## **TOP PERF DATA**

STATE PLANE COORDINATES:

ZONE: OK-NORTH NAD27

X: 2049928.8

Y: 390879.9

GPS DATUM: NAD27

LAT: 36.07370374

LONG: -97.83105199

STATE PLANE COORDINATES:

ZONE: OK-NORTH NAD83

X: 2018329.5

Y: 390904

GPS DATUM: NAD83

LAT: 36.07374257

LONG: -97.83138399

MD: 6774'

## **BOTTOM HOLE DATA**

STATE PLANE COORDINATES:

ZONE: OK-NORTH NAD27

X: 2049935.4

Y: 398185.1

GPS DATUM: NAD27

LAT: 36.09377236

LONG: -97.83098652

STATE PLANE COORDINATES:

ZONE: OK-NORTH NAD83

X: 2018336.1

Y: 398209.4

GPS DATUM: NAD83

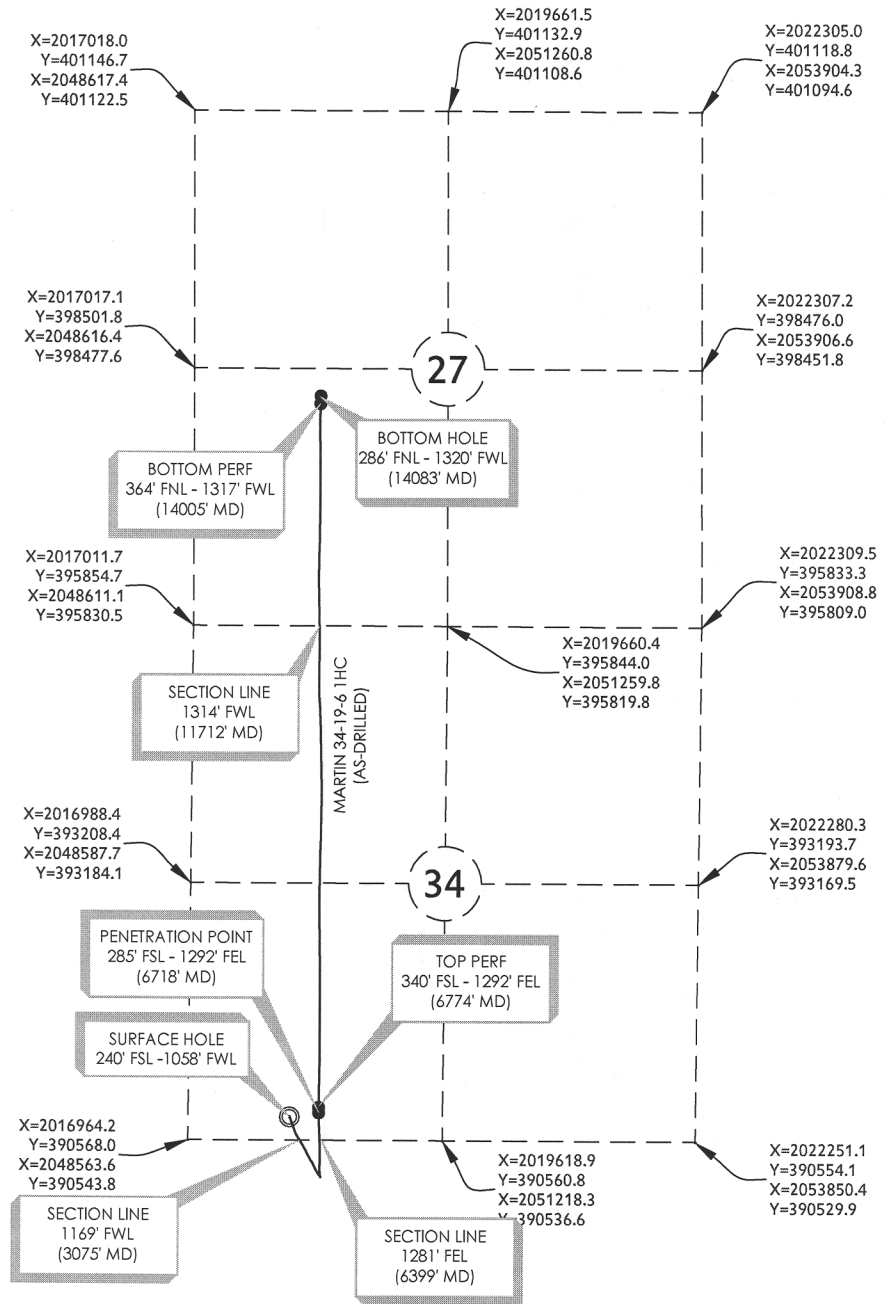
LAT: 36.09381082

LONG: -97.83131868

MD: 14083'

AS-DRILLED INFORMATION PROVIDED BY OPERATOR LISTED.

BASIS OF BEARING:  
GRID NORTH (NAD 83)  
OKLAHOMA - NORTH ZONE



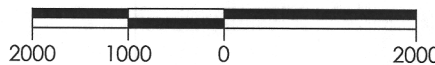
## MARTIN 34-19-6 1HC

PART OF THE SW/4 OF  
SECTION 34, T19N, R6W  
AS-DRILLED EXHIBIT  
KINGFISHER COUNTY, OKLAHOMA

SCALE: 1" = 2000'

PLOT DATE: 11-18-2018

GRAPHIC SCALE IN FEET



DRAWING: 17601120-AD-WELL

DRAWN BY:

DW

SHEET NO.: 1 OF 1

300 Pointe Parkway Blvd  
Yukon, OK 73099  
405.787.6270 f 405.787.6276 f  
www.craftontull.com



**Crafton Tull**  
SURVEYING  
CERTIFICATE OF AUTHORIZATION:  
CA 973 (PE/LS) EXPIRES 6/30/2018