

Oklahoma Corporation Commission
Oil & Gas Conservation Division
Post Office Box 52000
Oklahoma City, Oklahoma 73152-2000
Rule 165: 10-3-25

Form 1002A

API No.: 35093251530000

Completion Report

Spud Date: August 14, 2018

OTC Prod. Unit No.: 093-225424-0-0000

Drilling Finished Date: October 09, 2018

1st Prod Date: May 23, 2019

Completion Date: May 23, 2019

Drill Type: HORIZONTAL HOLE

Min Gas Allowable: Yes

Well Name: ULA 1-31H6X7

Purchaser/Measurer: XTO ENERGY

Location: MAJOR 31 22N 10W
SW SW SE SE
250 FSL 1150 FEL of 1/4 SEC
Latitude: 36.333652 Longitude: -98.305182
Derrick Elevation: 1294 Ground Elevation: 1269

First Sales Date: 05/23/2019

Operator: XTO ENERGY INC 21003

22777 SPRINGWOODS VILLAGE PKWY
SPRING, TX 77389-1425

Completion Type		Location Exception		Increased Density	
X	Single Zone	Order No		Order No	
	Multiple Zone	698281		There are no Increased Density records to display.	
	Commingled				

Casing and Cement							
Type	Size	Weight	Grade	Feet	PSI	SAX	Top of CMT
CONDUCTOR	20	106.5	J-55	105			SURFACE
SURFACE	9 5/8	36	J-55	1491		440	SURFACE
INTERMEDIATE	7	26.01	P-110	7490		231	5188
PRODUCTION	4 1/2	15.1	P-110	17950		780	4358

Liner								
Type	Size	Weight	Grade	Length	PSI	SAX	Top Depth	Bottom Depth
There are no Liner records to display.								

Total Depth: 17950

Packer	
Depth	Brand & Type
There are no Packer records to display.	

Plug	
Depth	Plug Type
There are no Plug records to display.	

Initial Test Data

Test Date	Formation	Oil BBL/Day	Oil-Gravity (API)	Gas MCF/Day	Gas-Oil Ratio Cu FT/BBL	Water BBL/Day	Pumpin or Flowing	Initial Shut-In Pressure	Choke Size	Flow Tubing Pressure
Jun 18, 2019	MISSISSIPPIAN (LESS CHESTER)	595	40	429	721	1047	FLOWING		OPEN	218

Completion and Test Data by Producing Formation

Formation Name: MISSISSIPPIAN (LESS CHESTER)

Code: 359MSNLC

Class: OIL

Spacing Orders

Order No	Unit Size
686147	640
686148	640
698280	MULTIUNIT

Perforated Intervals

From	To
7713	17816

Acid Volumes

204,540 GALLONS 15% HCL

Fracture Treatments

553,173 BARRELS, 16,001,135 POUNDS SAND, 4,529,040 POUNDS SAND
--

Formation	Top
OSAGE	7405

Were open hole logs run? No

Date last log run:

Were unusual drilling circumstances encountered? No

Explanation:

Other Remarks

OCC - THE ORDER 685847 AN INTERIM ORDER IS AN EXCEPTION TO RULE 165:10-3-28.

Lateral Holes

Sec: 7 TWP: 21N RGE: 10W County: MAJOR

SE SW SE SE

33 FSL 661 FEL of 1/4 SEC

Depth of Deviation: 5485 Radius of Turn: 1435 Direction: 178 Total Length: 10722

Measured Total Depth: 17950 True Vertical Depth: 7426 End Pt. Location From Release, Unit or Property Line: 33

FOR COMMISSION USE ONLY

1143239

Status: Accepted

API NO. 093-25153
OTC PROD. UNIT NO. 093-225424

(PLEASE TYPE OR USE BLACK INK ONLY)

OKLAHOMA CORPORATION COMMISSION
Oil & Gas Conservation Division
Post Office Box 52000
Oklahoma City, Oklahoma 73152-2000
Rule 165:10-3-25

RECEIVED

Form 1002A
Rev. 2009

JUN 21 2019

OKLAHOMA CORPORATION COMMISSION

☒ ORIGINAL
☐ AMENDED (Reason)

TYPE OF DRILLING OPERATION

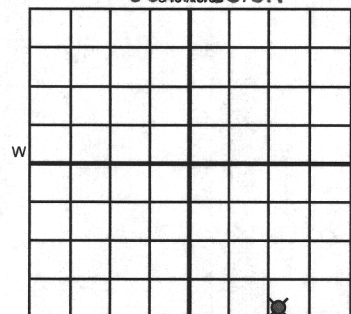
☐ STRAIGHT HOLE ☐ DIRECTIONAL HOLE ☒ HORIZONTAL HOLE
☐ SERVICE WELL

If directional or horizontal, see reverse for bottom hole location.

COUNTY Major SEC 31 TWP 22N RGE 10W
LEASE NAME Ula 1-31H6X7 WELL NO. 689161
SW 1/4 SW 1/4 SE 1/4 SE 1/4 FSL OF 250' FEL OF 1150'
ELEVATION Derrick FL 1294' Ground 1269' Latitude (if known) 36.333652 Longitude (if known) -98.305182
OPERATOR NAME XTO Energy Inc. OTC / OCC OPERATOR NO. 21003
ADDRESS 210 Park Ave., Ste. 2350
CITY Oklahoma City STATE OK ZIP 73102

COMPLETION REPORT

SPUD DATE 8/14/2018
DRLG FINISHED DATE 10/9/2018
DATE OF WELL COMPLETION 05/23/2019
1st PROD DATE 05/23/2019
RECOMP DATE
Longtitude (if known) -98.305182



COMPLETION TYPE

☒ SINGLE ZONE
☐ MULTIPLE ZONE
Application Date
COMINGLED
Application Date
LOCATION EXCEPTION ORDER NO.
INCREASED DENSITY ORDER NO.

CASING & CEMENT (Attach Form 1002C)

TYPE	SIZE	WEIGHT	GRADE	FEET	PSI	SAX	TOP OF CMT
CONDUCTOR	20"	106.5#	J-55	105'			Surface
SURFACE	9-5/8"	36#	J-55	1,491'		440	Surface
INTERMEDIATE	7"	26.01#	P-110	7,490'		231	2282' 5188
PRODUCTION	4-1/2"	15.1#	P-110	17,950'		780	4358'
LINER							

PACKER @ BRAND & TYPE PLUG @ TYPE PLUG @ TYPE
PACKER @ BRAND & TYPE PLUG @ TYPE PLUG @ TYPE

TOTAL DEPTH 17,950' MD

COMPLETION & TEST DATA BY PRODUCING FORMATION

FORMATION	SPACING & SPACING ORDER NUMBER	CLASS: Oil, Gas, Dry, Inj, Disp, Comm Disp, Svc	PERFORATED INTERVALS	ACID/VOLUME	FRACTURE TREATMENT (Fluids/Prop Amounts)
Osage Mississippian (Less Chester)	640 / 686147 & 640 / 686148	Oil	7,713' - 17,816'	204,540 gals 15% HCl	553,173 bbls 16,001,135 lb sand 4,529,040 lb RC sand

Reported to Free Focus



Min Gas Allowable (165:10-17-7)
OR
Oil Allowable (165:10-13-3)

Gas Purchaser/Measurer
First Sales Date

XTO Energy
5/23/2019

INITIAL TEST DATA

INITIAL TEST DATE	6/18/2019
OIL-BBL/DAY	595
OIL-GRAVITY (API)	40
GAS-MCF/DAY	429
GAS-OIL RATIO CU FT/BBL	721
WATER-BBL/DAY	1,047
PUMPING OR FLOWING	Flowing
INITIAL SHUT-IN PRESSURE	N/A
CHOKE SIZE	Open
FLOW TUBING PRESSURE	218

AS SUBMITTED

A record of the formations drilled through, and pertinent remarks are presented on the reverse. I declare that I have knowledge of the contents of this report and am authorized by my organization to make this report, which was prepared by me or under my supervision and direction, with the data and facts stated herein to be true, correct, and complete to the best of my knowledge and belief.

Karen Byers
SIGNATURE
210 Park Ave., Ste. 2350
ADDRESS
Oklahoma City
CITY
OK
STATE
73102
ZIP
405-319-3212
PHONE NUMBER
karen_byers@xtoenergy.com
EMAIL ADDRESS

PLEASE TYPE OR USE BLACK INK ONLY
FORMATION RECORD

Give formation names and tops, if available, or descriptions and thickness of formations drilled through. Show intervals cored or drillstem tested.

NAMES OF FORMATIONS	TOP
Osage	7405'

LEASE NAME Ula WELL NO. 1-31H6X7

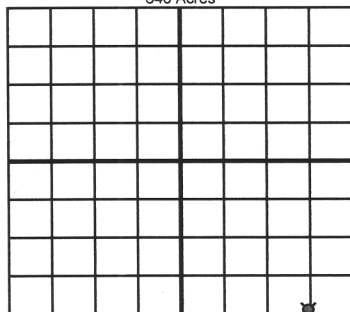
FOR COMMISSION USE ONLY	
ITD on file <input type="checkbox"/> YES <input type="checkbox"/> NO	
APPROVED _____ DISAPPROVED _____	2) Reject Codes
<div></div> <div></div> <div></div> <div></div> <div></div>	

Were open hole logs run?	yes	<input checked="" type="checkbox"/> no
Date Last log was run	_____	
Was CO ₂ encountered?	yes	<input checked="" type="checkbox"/> no at what depths? _____
Was H ₂ S encountered?	yes	<input checked="" type="checkbox"/> no at what depths? _____
Were unusual drilling circumstances encountered?	yes	<input checked="" type="checkbox"/> no
If yes, briefly explain below		

Other remarks:

10.
DCC - Order 685847 Exception to Rule 165:10-3-28

640 Acres

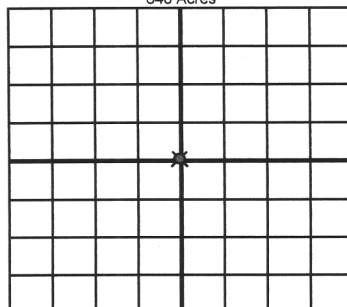


If more than three drainholes are proposed, attach a separate sheet indicating the necessary information.

Direction must be stated in degrees azimuth. Please note, the horizontal drainhole and its end point must be located within the boundaries of the lease or spacing unit.

Directional surveys are required for all drainholes and directional wells.

640 Acres



BOTTOM HOLE LOCATION FOR DIRECTIONAL HOLE

SEC	TWP	RGE	COUNTY
Spot Location	1/4	1/4	1/4
Measured Total Depth	True Vertical Depth	Feet From 1/4 Sec Lines FSL FWL	
BHL From Lease, Unit, or Property Line:			

BOTTOM HOLE LOCATION FOR HORIZONTAL HOLE: (LATERALS)

LATERAL #1			
SEC	TWP	RGE	COUNTY
7	21N	10W	Major
Spot Location	SE 1/4 SW 1/4 SE 1/4 SE 1/4	Feet From 1/4 Sec Lines	FSL 33' FEL 661'
Depth of Deviation	5485'	Radius of Turn	1435.6'
Measured Total Depth	17,950'	True Vertical Depth	7426'
Direction <u>178-176-9 deg.</u> Total Length 10,722.6'			
BHL From Lease, Unit, or Property Line: 33' FSL & 661' FEL			

LATERAL #2			
SEC	TWP	RGE	COUNTY
Spot Location	1/4	1/4	1/4
Depth of Deviation	Radius of Turn	Direction	Total Length
Measured Total Depth	True Vertical Depth	BHL From Lease, Unit, or Property Line:	

LATERAL #3			
SEC	TWP	RGE	COUNTY
Spot Location	1/4	1/4	1/4
Depth of Deviation	Radius of Turn	Direction	Total Length
Measured Total Depth	True Vertical Depth	BHL From Lease, Unit, or Property Line:	