

Oklahoma Corporation Commission
Oil & Gas Conservation Division
Post Office Box 52000
Oklahoma City, Oklahoma 73152-2000
Rule 165: 10-3-25

Form 1002A

API No.: 35011239200001

Completion Report

Spud Date: February 16, 2018

OTC Prod. Unit No.: 011-225768-0-0000

Drilling Finished Date: April 04, 2018

1st Prod Date: May 09, 2019

Completion Date: May 09, 2019

Drill Type: HORIZONTAL HOLE

Well Name: PIONEER 3_34-18N-13W 1HX

Purchaser/Measurer: ACE

Location: BLAINE 10 18N 13W
SE NW NW NW
390 FNL 410 FWL of 1/4 SEC
Derrick Elevation: 1595 Ground Elevation: 1570

First Sales Date:

Operator: DERBY EXPLORATION LLC 24143
PO BOX 779
100 PARK AVE STE 400
OKLAHOMA CITY, OK 73101-0779

Completion Type	
X	Single Zone
	Multiple Zone
	Commingled

Location Exception
Order No
701222

Increased Density
Order No
There are no Increased Density records to display.

Casing and Cement							
Type	Size	Weight	Grade	Feet	PSI	SAX	Top of CMT
SURFACE	20			247		560	SURFACE
INTERMEDIATE	13.375	54.5	J-55	740		800	SURFACE
INTERMEDIATE	9.625	40	P-110	7994		310	2174
PRODUCTION	5.5	23	P-110	20448		2370	2867

Liner								
Type	Size	Weight	Grade	Length	PSI	SAX	Top Depth	Bottom Depth
There are no Liner records to display.								

Total Depth: 20448

Packer	
Depth	Brand & Type
There are no Packer records to display.	

Plug	
Depth	Plug Type
There are no Plug records to display.	

Initial Test Data

Test Date	Formation	Oil BBL/Day	Oil-Gravity (API)	Gas MCF/Day	Gas-Oil Ratio Cu FT/BBL	Water BBL/Day	Pumpin or Flowing	Initial Shut-In Pressure	Choke Size	Flow Tubing Pressure
May 31, 2019	MISSISSIPPIAN	344	51.6	3483	10125	1455	FLOWING		26/64	

Completion and Test Data by Producing Formation

Formation Name: MISSISSIPPIAN

Code: 359MSSP

Class: OIL

Spacing Orders

Order No	Unit Size
672947	640
675622	640
701221	MULTIUNIT

Perforated Intervals

From	To
10147	20294

Acid Volumes

168,000 GALLONS 15% HCL

Fracture Treatments

15,760,731 POUNDS 40/70 PROPPANT 30/50 WT, 3,455,140?, 15,376,326 GALLONS SLICKWATER
--

Formation	Top
BIG LIME	7752
VERDIGRIS	8012
PINK LIME	8106
INOLA	8258
CHESTER	8587

Were open hole logs run? No

Date last log run:

Were unusual drilling circumstances encountered? No

Explanation:

Other Remarks

TRANSFER OF OPERATOR AUGUST 1, 2018

Lateral Holes

Sec: 34 TWP: 19N RGE: 13W County: BLAINE

NE NW NW NW

77 FNL 528 FWL of 1/4 SEC

Depth of Deviation: 9074 Radius of Turn: 0 Direction: 3 Total Length: 10709

Measured Total Depth: 20448 True Vertical Depth: 9272 End Pt. Location From Release, Unit or Property Line: 50

FOR COMMISSION USE ONLY

1143560

Status: Accepted

(PLEASE TYPE OR USE BLACK INK ONLY)

OKLAHOMA CORPORATION COMMISSION

Oil & Gas Conservation Division

Post Office Box 52000

Oklahoma City, Oklahoma 73152-2000

Rule 165:10-3-25

COMPLETION REPORT

X	ORIGINAL
	AMENDED (Reason)

TYPE OF DRILLING OPERATION

☐ STRAIGHT HOLE ☐ DIRECTIONAL HOLE ☒ HORIZONTAL HOLE
☐ SERVICE WELL

If directional or horizontal, see reverse for bottom hole location.

COUNTY	Blaine	SEC	10	TWP	18N	RGE	13W	DATE OF WELL COMPLETION	5/9/2019
LEASE NAME	Pioneer	3-34-18N-13W	34-18N	340	NO.	13W 1HX	1st PROD DATE	5/9/2019	
SE 1/4 NW 1/4 NW 1/4 NW 1/4	FWL OF 1/4 SEC	300	FWL OF 1/4 SEC	410	RECOMP DATE				
ELEVATION Derrick FL	1,595	Ground	1,570	Latitude (if known)		Longitude (if known)			
OPERATOR NAME	Derby Exploration, LLC	OTC/OCC OPERATOR NO.	24143 0						
ADDRESS	P.O. Box 779								
CITY	OKC	STATE	OK	ZIP	73101-0779				

640 Acres

X

10

W

E

LOCATE WELL

COMPLETION TYPE

X	SINGLE ZONE
	MULTIPLE ZONE
	Application Date
	COMMINGLED
	Application Date
LOCATION EXCEPTION	
ORDER NO.	701222 FO.
INCREASED DENSITY	2017-08541
ORDER NO.	

CASING & CEMENT (Form 1002C must be attached)

TYPE	SIZE	WEIGHT	GRADE	FEET	PSI	SAX	TOP OF CMT
CONDUCTOR	20			247		560	surface
SURFACE	13 375	54.5	J55	740		800	surface
INTERMEDIATE	9.625	40	P 110	7,994		310	2174
PRODUCTION	5.5	23	P110	20,448		2,370	2867
LINER							
PLUG @	TYPE	PLUG @	TYPE	TOTAL DEPTH		20,448	

PACKER @ _____ BRAND & TYPE _____ PLUG @ _____ TYPE _____ PLUG @ _____ TYPE _____
 PACKER @ _____ BRAND & TYPE _____ PLUG @ _____ TYPE _____ PLUG @ _____ TYPE _____

COMPLETION & TEST DATA BY PRODUCING FORMATION

FORMATION	Mississippian					
SPACING & SPACING ORDER NUMBER	(640) 2047-03840	672947(640)	675622(640)	701221(640)	F0	Reported to Frac Focus
CLASS: Oil, Gas, Dry, Inj, Disp, Comm Disp, Svc	Oil					
PERFORATED INTERVALS	10147	15245				
	15282	20294				
ACID/VOLUME	15% HCl:	168,000 (gal)				
FRACTURE TREATMENT (Fluids/Prop Amounts)	40/70 Proppant: →	15,760,731(lb) →	30/50 Wt	3,455,140 ?		
	Slickwater: →	15,376,326 (gal)				

Min Gas Allowable (165:10-17-7)

Gas Purchaser/Measurer

Ace

INITIAL TEST DATA

Oil Allowable (165:10-13-3)

First Sales Date

INITIAL TEST DATE	5/31/2019					
OIL-BBL/DAY	344					
OIL-GRAVITY (API)	51.6					
GAS-MCF/DAY	3483					
GAS-OIL RATIO CU FT/BBL	10,125					
WATER-BBL/DAY	1455					
PUMPING OR FLOWING	Flowing					
INITIAL SHUT-IN PRESSURE						
CHOKE SIZE	26/64					
FLOW TUBING PRESSURE						

AS SUBMITTED

A record of the formations drilled through, and pertinent remarks are presented on the reverse. I declare that I have knowledge of the contents of this report and am authorized by my organization to make this report, which was prepared by me or under my supervision and direction, with the data and facts stated herein to be true, correct, and complete to the best of my knowledge and belief.

Shellee Kennedy
SIGNATURE

Shellee Kennedy
NAME (PRINT OR TYPE)

7/13/2019	405-202-4535
DATE	PHONE NUMBER

P.O. Box 779

OKC

OK 73101

skennedy@derbyenergy.com

ADDRESS

CITY

STATE	ZIP
-------	-----

EMAIL ADDRESS

PLEASE TYPE OR USE BLACK INK ONLY
FORMATION RECORD

Give formation names and tops, if available, or descriptions and thickness of formations drilled through. Show intervals cored or drillstem tested.

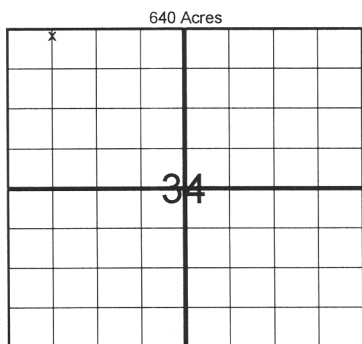
LEASE NAME _____ WELL NO. _____

NAMES OF FORMATIONS	TOP
Big Lime	7,752
Verdigris	8,012
Pink Lime	8,106
Inola	8,258
Chester	8,587

FOR COMMISSION USE ONLY	
ITD on file <input type="checkbox"/> YES <input type="checkbox"/> NO	
APPROVED _____ DISAPPROVED _____	2) Reject Codes

Were open hole logs run?	yes	<input checked="" type="checkbox"/> no
Date Last log was run	_____	
Was CO ₂ encountered?	yes	<input checked="" type="checkbox"/> no at what depths? _____
Was H ₂ S encountered?	yes	<input checked="" type="checkbox"/> no at what depths? _____
Were unusual drilling circumstances encountered?	yes	<input checked="" type="checkbox"/> no
If yes, briefly explain below		

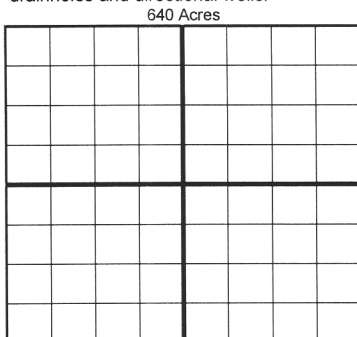
Other remarks: Transfer of Operator 8/1/2018.



If more than three drainholes are proposed, attach a separate sheet indicating the necessary information.

Direction must be stated in degrees azimuth. Please note, the horizontal drainhole and its end point must be located within the boundaries of the lease or spacing unit.

Directional surveys are required for all drainholes and directional wells.



BOTTOM HOLE LOCATION FOR DIRECTIONAL HOLE

SEC	TWP	RGE	COUNTY
Spot Location	1/4	1/4	1/4
Measured Total Depth	True Vertical Depth		BHL From Lease, Unit, or Property Line:

BOTTOM HOLE LOCATION FOR HORIZONTAL HOLE: (LATERALS)

LATERAL #1			
SEC	TWP	RGE	COUNTY
34	19N	13W	Blaine
Spot Location	NE 1/4	NW 1/4	NW 1/4
Depth of Deviation	9,074	Radius of Turn	Direction 34
Measured Total Depth	20,448	True Vertical Depth	9,272
		BHL From Lease, Unit, or Property Line: 5077	

LATERAL #2			
SEC	TWP	RGE	COUNTY
Spot Location	1/4	1/4	1/4
Depth of Deviation	Radius of Turn		Direction
Measured Total Depth	True Vertical Depth		Total Length
		BHL From Lease, Unit, or Property Line:	

LATERAL #3			
SEC	TWP	RGE	COUNTY
Spot Location	1/4	1/4	1/4
Depth of Deviation	Radius of Turn		Direction
Measured Total Depth	True Vertical Depth		Total Length
		BHL From Lease, Unit, or Property Line:	