

Oklahoma Corporation Commission
Oil & Gas Conservation Division
Post Office Box 52000
Oklahoma City, Oklahoma 73152-2000
Rule 165: 10-3-25

Form 1002A

API No.: 35029213820001

Completion Report

Spud Date: October 18, 2018

OTC Prod. Unit No.: 029-224859-0-0000

Drilling Finished Date: November 06, 2018

1st Prod Date: January 07, 2019

Completion Date: December 02, 2018

Drill Type: HORIZONTAL HOLE

Well Name: AMIGO SHINE 1-15H

Purchaser/Measurer: SOUTHWEST ENERGY LP

Location: COAL 15 2N 9E
NE NW NE NE
311 FNL 885 FEL of 1/4 SEC
Derrick Elevation: 770 Ground Elevation: 745

First Sales Date: 01/07/2019

Operator: CANYON CREEK ENERGY OPERATING LLC 23443

2431 E 61ST ST STE 400
TULSA, OK 74136-1237

Completion Type		Location Exception		Increased Density	
X	Single Zone	Order No		Order No	
	Multiple Zone	N/A		N/A	
	Commingled				

Casing and Cement							
Type	Size	Weight	Grade	Feet	PSI	SAX	Top of CMT
CONDUCTOR	20	94	H-40	40			
SURFACE	9 5/8	36	J-55	1020		290	SURFACE
PRODUCTION	5 1/2	20	P-110	12361		1225	4508

Liner								
Type	Size	Weight	Grade	Length	PSI	SAX	Top Depth	Bottom Depth
There are no Liner records to display.								

Total Depth: 12389

Packer	
Depth	Brand & Type
There are no Packer records to display.	

Plug	
Depth	Plug Type
There are no Plug records to display.	

Initial Test Data

Test Date	Formation	Oil BBL/Day	Oil-Gravity (API)	Gas MCF/Day	Gas-Oil Ratio Cu FT/BBL	Water BBL/Day	Pumpin or Flowing	Initial Shut-In Pressure	Choke Size	Flow Tubing Pressure
Jan 21, 2019	WOODFORD	28	43	2707	96679	1725	FLOWING	735	F.O.	185

Completion and Test Data by Producing Formation

Formation Name: WOODFORD		Code: 319WDFD		Class: GAS	
Spacing Orders			Perforated Intervals		
Order No	Unit Size	From	To		
682692	640	7745	12250		
Acid Volumes			Fracture Treatments		
NONE			6,194,460 POUNDS PROPPANT, 163,894 BARRELS FRAC FLUID		

Formation	Top
WOODFORD	6692

Were open hole logs run? No
 Date last log run:

 Were unusual drilling circumstances encountered? No
 Explanation:

Other Remarks
OCC - THIS WELL'S COMPLETION INTERVAL IS WITHIN WHAT THE SPACING ORDER ALLOWS.

Lateral Holes
Sec: 15 TWP: 2N RGE: 9E County: COAL SW SE SE SE 31 FSL 2242 FWL of 1/4 SEC Depth of Deviation: 5802 Radius of Turn: 1471 Direction: 176 Total Length: 5116 Measured Total Depth: 12389 True Vertical Depth: 6304 End Pt. Location From Release, Unit or Property Line: 31

FOR COMMISSION USE ONLY
<div>Status: Accepted</div> <div>1143586</div>

API NO. 029 21382 PLEASE TYPE OR USE BLACK INK ONLY

OTC PROD. UNIT NO. 029-224059 Attach copy of original 1002A if recompletion or reentry.

☒ ORIGINAL
☐ AMENDED (Reason)

OKLAHOMA CORPORATION COMMISSION
Oil & Gas Conservation Division
Post Office Box 52000
Oklahoma City, Oklahoma 73152-2000
Rule 165:10-3-25

RECEIVED

JUL 22 2019

OKLAHOMA CORPORATION COMMISSION

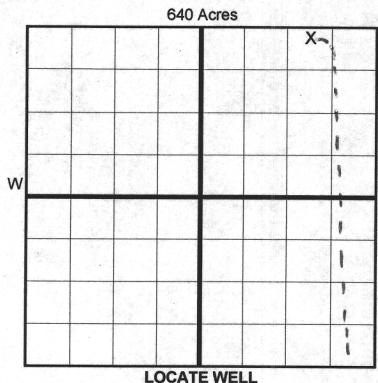
COMPLETION REPORT

TYPE OF DRILLING OPERATION

☐ STRAIGHT HOLE ☐ DIRECTIONAL HOLE ☒ HORIZONTAL HOLE
SERVICE WELL

If directional or horizontal, see reverse for bottom hole location.

COUNTY	Coal	SEC	15.14	TWP	2N	RGE	9E	SPUD DATE	10/18/2018
LEASE NAME	Amigo Shine			WELL NO.	1-15H			DRLG FINISHED DATE	11/6/2018
NE 1/4 NW 1/4 NE 1/4 NE 1/4	FNL OF 1/4 SEC			311	303			DATE OF WELL COMPLETION	12/2/2018
ELEVATION Derrick FL	770	Ground	745	Latitude (if known)	34.38.59.36N			1st PROD DATE	1/7/2019
OPERATOR NAME	Canyon Creek Energy			Longitude (if known)	96.20.08.43W			RECOMP DATE	
ADDRESS	2431 E. 61st St Suite 400			OPERATOR NO.	23443				
CITY	Tulsa	STATE	OK	ZIP	74136				



COMPLETION TYPE

<input checked="" type="checkbox"/> SINGLE ZONE	
<input type="checkbox"/> MULTIPLE ZONE	
<input type="checkbox"/> COMMINGLED	
LOCATION	N/A
EXCEPTION ORDER	N/A
INCREASED DENSITY ORDER NO.	N/A

CASING & CEMENT (Form 1002C must be attached)

TYPE	SIZE	WEIGHT	GRADE	FEET	PSI	SAX	TOP OF CMT
CONDUCTOR	20"	94#	H-40	40			
SURFACE	9 5/8"	36#	J-55	1020		290	Surface
INTERMEDIATE							
PRODUCTION	5 1/2"	20#	P110	12361		1225	4508'
LINER							
				TOTAL DEPTH	12,389		

PACKER @ BRAND & TYPE PLUG @ TYPE PLUG @ TYPE
PACKER @ BRAND & TYPE PLUG @ TYPE PLUG @ TYPE

COMPLETION & TEST DATA BY PRODUCING FORMATION

FORMATION	Woodford				
SPACING & SPACING ORDER NUMBER	640 #682692				
CLASS: Oil, Gas, Dry, Inj, Disp, Comm Disp, Svc	Gas				
PERFORATED INTERVALS	7745-12250				
ACID/VOLUME	None				
FRACTURE TREATMENT (Fluids/Prop Amounts)	6,194,460 #'s Proppant				
	163,894 bbls Frac Fluid				

Reported to Frac Focus

Min Gas Allowable (165:10-17-7) OR Oil Allowable (165:10-13-3) Gas Purchaser/Measurer Southwest Energy, LP First Sales Date 1/7/2019

INITIAL TEST DATA

INITIAL TEST DATE	1/21/2019			
OIL-BBL/DAY	28			
OIL-GRAVITY (API)	43			
GAS-MCF/DAY	2,707			
GAS-OIL RATIO CU FT/BBL	97,000 96,679			
WATER-BBL/DAY	1725			
PUMPING OR FLOWING	Flowing			
INITIAL SHUT-IN PRESSURE	735			
CHOKE SIZE	F.O.			
FLOW TUBING PRESSURE	185			

AS SUBMITTED

A record of the formations drilled through, and pertinent remarks are presented on the reverse. I declare that I have knowledge of the contents of this report and am authorized by my organization to make this report, which was prepared by me or under my supervision and direction, with the data and facts stated herein to be true, correct, and complete to the best of my knowledge and belief.

SIGNATURE	C. Daniel Jacobs	DATE	7/15/2019	PHONE NUMBER	918-561-6737
ADDRESS	2431 E. 61st ST. SUITE400	CITY	TULSA	STATE	OK
		ZIP	74136	EMAIL ADDRESS	djacobs@cceok.com

FORMATION RECORD

LEASE NAME Amigo Shine WELL NO. 1-15H

NAMES OF FORMATIONS	TOP
Woodford	6,692

FOR COMMISSION USE ONLY	
ITD on file	<input type="checkbox"/> YES <input type="checkbox"/> NO
APPROVED	DISAPPROVED
2) Reject Codes	

Were open hole logs run? ☐ yes ☒ no

Date Last log was run _____

Was CO₂ encountered? ☐ yes ☒ no at what depths? _____

Was H₂S encountered? ☐ yes ☒ no at what depths? _____

Were unusual drilling circumstances encountered? ☐ yes ☒ no

If yes, briefly explain below

Other remarks:

Direction must be stated in degrees azimuth.
Please note, the horizontal drainhole and its end point must be located within the boundaries of the lease or spacing unit.

640 Acres

A blank 10x10 grid with a bold cross dividing it into four 5x5 quadrants.

SEC	TWP	RGE	COUNTY			
Spot Location			Feet From 1/4 Sec Lines	FSL	FWL	
1/4	1/4	1/4	1/4			
Measured Total Depth		True Vertical Depth	BHL From Lease, Unit, or Property Line:			

LATERAL #1											
SEC 15	TWP 2N	RGE 9E	COUNTY Coal								
Spot Location				SE 1/4		SE 1/4		SE 1/4		1/4	
Feet From 1/4 Sec Lines				FSL 31		FWL 2242					
Depth of Deviation 5,802				Radius of Turn 1471		Direction 176 180		Total Length 5,116			
Measured Total Depth 12,389				True Vertical Depth 6,304		BHL From Lease, Unit, or Property Line: 31' FSL 308' FEL					

SEC	TWP	RGE	COUNTY			
Spot Location				Feet From 1/4 Sec Lines	FSL	FWL
1/4	1/4	1/4	1/4			
Depth of Deviation		Radius of Turn	Direction	Total Length		
Measured Total Depth		True Vertical Depth	BHL From Lease, Unit, or Property Line:			

SEC	TWP	RGE	COUNTY			
Spot Location				Feet From 1/4 Sec Lines	FSL	FWL
1/4	1/4	1/4	1/4			
Depth of Deviation		Radius of Turn	Direction	Total Length		
Measured Total Depth		True Vertical Depth	BHL From Lease, Unit, or Property Line:			

API NO. 029 21382 PLEASE TYPE OR USE BLACK INK ONLY

OTC PROD. UNIT NO. 029-224859 Attach copy of original 1002A if recompletion or reentry.

☒ ORIGINAL
☐ AMENDED (Reason)

TYPE OF DRILLING OPERATION

☐ STRAIGHT HOLE ☐ DIRECTIONAL HOLE ☒ HORIZONTAL HOLE
SERVICE WELL

If directional or horizontal, see reverse for bottom hole location.

COUNTY	Coal	SE 1514	TWP 2N	RGE 9E	SPUD DATE	10/18/2018
LEASE NAME	Amigo Shine			WELL NO.	1-15H	DRLG FINISHED DATE
NE 1/4 NW 1/4 NE 1/4 NE 1/4	FNL OF 1/4 SEC	311 303	1/4 SEC	295	DATE OF WELL COMPLETION	12/2/2018
ELEVATION Derrick FL	770	Ground	745	Latitude (if known)	34.38.59.36N	1st PROD DATE
OPERATOR NAME	Canyon Creek Energy Operating LLC			Longitude (if known)	96.20.08.43W	RECOMP DATE
ADDRESS	2431 E. 61st St Suite 400			OPERATOR NO.	23443	
CITY	Tulsa	STATE	OK	ZIP	74136	

COMPLETION TYPE

<input checked="" type="checkbox"/> SINGLE ZONE	
<input type="checkbox"/> MULTIPLE ZONE	
Application Date	
<input type="checkbox"/> COMINGLED	
Application Date	
LOCATION	N/A
EXCEPTION ORDER	N/A
INCREASED DENSITY ORDER NO.	N/A

CASING & CEMENT (Form 1002C must be attached)

TYPE	SIZE	WEIGHT	GRADE	FEET	PSI	SAX	TOP OF CMT
CONDUCTOR	20"	94#	H-40	40			
SURFACE	9 5/8"	36#	J-55	1020		290	Surface
INTERMEDIATE							
PRODUCTION	5 1/2"	20#	P110	12361		1225	4508'
LINER							
						TOTAL DEPTH	12,389

PACKER @ _____ BRAND & TYPE _____ PLUG @ _____ TYPE _____ PLUG @ _____ TYPE _____
PACKER @ _____ BRAND & TYPE _____ PLUG @ _____ TYPE _____ PLUG @ _____ TYPE _____

COMPLETION & TEST DATA BY PRODUCING FORMATION

FORMATION	Woodford						
SPACING & SPACING ORDER NUMBER	640 #682692						
CLASS: Oil, Gas, Dry, Inj, Disp, Comm Disp, Svc	Gas						
PERFORATED INTERVALS	7745-12250						
ACID/VOLUME	None						
FRACTURE TREATMENT (Fluids/Prop Amounts)	6,194,460 #s Proppant						
	163,894 bbls Frac Fluid						

Min Gas Allowable (165:10-17-7)



OR

Oil Allowable (165:10-13-3)

Gas Purchaser/Measurer

First Sales Date

Southwest Energy, LP

1/7/2019

INITIAL TEST DATA

INITIAL TEST DATE	1/21/2019				
OIL-BBL/DAY	28				
OIL-GRAVITY (API)	43				
GAS-MCF/DAY	2,707				
GAS-OIL RATIO CU FT/BBL	27,000 96,679				
WATER-BBL/DAY	1725				
PUMPING OR FLOWING	Flowing				
INITIAL SHUT-IN PRESSURE	735				
CHOKE SIZE	F.O.				
FLOW TUBING PRESSURE	185				

AS SUBMITTED

A record of the formations drilled through, and pertinent remarks are presented on the reverse. I declare that I have knowledge of the contents of this report and am authorized by my organization to make this report, which was prepared by me or under my supervision and direction, with the data and facts stated herein to be true, correct, and complete to the best of my knowledge and belief.

SIGNATURE	C. Daniel Jacobs	DATE	7/15/2019	PHONE NUMBER	918-561-6737
ADDRESS	2431 E. 61st ST. SUITE 400	CITY	TULSA	STATE	OK
		ZIP	74136	EMAIL ADDRESS	djacobs@cceok.com

OKLAHOMA CORPORATION COMMISSION

Oil & Gas Conservation Division
Post Office Box 52000
Oklahoma City, Oklahoma 73152-2000
Rule 165:10-3-25

COMPLETION REPORT

RECEIVED

JUL 22 2019

OKLAHOMA CORPORATION COMMISSION

1016EZ

640 Acres	
W	E
LOCATE WELL	

E2

AR