

Oklahoma Corporation Commission
Oil & Gas Conservation Division
Post Office Box 52000
Oklahoma City, Oklahoma 73152-2000
Rule 165: 10-3-25

Form 1002A

API No.: 35087222560000

Completion Report

Spud Date: July 30, 2019

OTC Prod. Unit No.: 087-226498-0-0000

Drilling Finished Date: September 12, 2019

1st Prod Date: January 14, 2010

Completion Date: January 14, 2020

Drill Type: HORIZONTAL HOLE

Min Gas Allowable: Yes

Well Name: CANDI 1411 4H

Purchaser/Measurer: ENABLE GATHERING &
PROCESSING

First Sales Date: 01/14/2020

Location: MCCLAIN 23 8N 4W
NW NW NE NW
301 FNL 1420 FWL of 1/4 SEC
Latitude: 35.159581301 Longitude: -97.594963073
Derrick Elevation: 0 Ground Elevation: 1209

Operator: EOG RESOURCES INC 16231

3817 NW EXPRESSWAY STE 500
OKLAHOMA CITY, OK 73112-1483

| Completion Type | | Location Exception | | Increased Density | |
|-----------------|---------------|--------------------|--|-------------------|--|
| X | Single Zone | Order No | | Order No | |
| | Multiple Zone | 701168 | | 699428 | |
| | Commingled | | | 699429 | |

| Casing and Cement | | | | | | | |
|-------------------|-------|--------|-------|-------|-----|------|------------|
| Type | Size | Weight | Grade | Feet | PSI | SAX | Top of CMT |
| SURFACE | 9 5/8 | 36 | J-55 | 1005 | | 480 | SURFACE |
| PRODUCTION | 5 1/2 | 20 | P-110 | 19621 | | 2275 | 44 |

| Liner | | | | | | | | |
|--|------|--------|-------|--------|-----|-----|-----------|--------------|
| Type | Size | Weight | Grade | Length | PSI | SAX | Top Depth | Bottom Depth |
| There are no Liner records to display. | | | | | | | | |

Total Depth: 19628

| Packer | |
|---|--------------|
| Depth | Brand & Type |
| There are no Packer records to display. | |

| Plug | |
|---------------------------------------|-----------|
| Depth | Plug Type |
| There are no Plug records to display. | |

| Initial Test Data |
|-------------------|
|-------------------|

| Test Date | Formation | Oil BBL/Day | Oil-Gravity (API) | Gas MCF/Day | Gas-Oil Ratio Cu FT/BBL | Water BBL/Day | Pumpin or Flowing | Initial Shut-In Pressure | Choke Size | Flow Tubing Pressure |
|--------------|-----------|-------------|-------------------|-------------|-------------------------|---------------|-------------------|--------------------------|------------|----------------------|
| Jan 19, 2020 | WOODFORD | 623 | 40 | 687 | 1103 | 2591 | FLOWING | 550 | 128 | 390 |

| | |
|--|---------------|
| Completion and Test Data by Producing Formation | |
| Formation Name: WOODFORD | Code: 319WDFD |
| Class: OIL | |

| Spacing Orders | |
|----------------|-----------|
| Order No | Unit Size |
| 681030 | 640 |
| 684522 | 640 |
| 701167 | MULTIUNIT |

| Perforated Intervals | |
|----------------------|-------|
| From | To |
| 9560 | 19548 |

| Acid Volumes | |
|-----------------------------------|--|
| 2,000 GALLONS 7.5% HCL TOTAL ACID | |

| Fracture Treatments | |
|--|--|
| 24,135,862 GALLONS TOTAL FLUID, 25,090,500 POUNDS TOTAL PROPPANT | |

| Formation | Top |
|-----------|------|
| WOODFORD | 9402 |

Were open hole logs run? No

Date last log run:

Were unusual drilling circumstances encountered? No

Explanation:

| |
|---|
| Other Remarks |
| OCC - THIS DOCUMENT IS ACCEPTED BASED ON THE DATA SUBMITTED NEITHER THE FINAL LOCATION EXCEPTION NOR THE FINAL MULTIUNIT ORDERS HAVE BEEN ISSUED. |

| |
|--|
| Lateral Holes |
| Sec: 11 TWP: 8N RGE: 4W County: MCCLAIN NE NE NE NW 174 FNL 2370 FWL of 1/4 SEC Depth of Deviation: 8985 Radius of Turn: 948 Direction: 360 Total Length: 9695 Measured Total Depth: 19628 True Vertical Depth: 9159 End Pt. Location From Release, Unit or Property Line: 174 |

| | |
|--------------------------------|---------|
| FOR COMMISSION USE ONLY | |
| Status: Accepted | 1144711 |

API NO. 087-22256
OTC PROD. 087-226498
UNIT NO.

PLEASE TYPE OR USE BLACK INK ONLY
NOTE:

Attach copy of original 1002A
if recompletion or reentry.

OKLAHOMA CORPORATION COMMISSION
Oil & Gas Conservation Division
Post Office Box 52000
Oklahoma City, Oklahoma 73152-2000
Rule 165:10-3-25

RECEIVED

Form 1002A
Rev. 2009

JAN 24 2020

☒ ORIGINAL
☐ AMENDED (Reason)

COMPLETION REPORT

OKLAHOMA CORPORATION
COMMISSION

TYPE OF DRILLING OPERATION

☐ STRAIGHT HOLE ☐ DIRECTIONAL HOLE ☒ HORIZONTAL HOLE
☐ SERVICE WELL

If directional or horizontal, see reverse for bottom hole location.

| | | | | | | | | | |
|-----------------------------|-------------------------------|-------|---------------------|----------------|----------------------|--------------------|----------------------|-------------------------|---------|
| COUNTY | MCCLAIN | SEC | 23 | TWP | 8N | RGE | 4W | SPUD DATE | 7/30/19 |
| LEASE NAME | CANDI 1411 | | | WELL NO. | 4H | DRLG FINISHED DATE | 9/12/19 | DATE OF WELL COMPLETION | 1/14/20 |
| NW 1/4 NW 1/4 NE 1/4 NW 1/4 | FNL OF 1/4 SEC 301 | | | FWL OF 1/4 SEC | 1,420 | 1st PROD DATE | 1/14/20 | RECOMP DATE | |
| ELEVATION N Derrick | Ground | 1,209 | Latitude (if known) | 35.159581301 | | | Longitude (if known) | -97.594963073 | |
| OPERATOR NAME | EOG Resources, Inc. | | | | OTC/OCC OPERATOR NO. | 16231 | | | |
| ADDRESS | 3817 NW Expressway, Suite 500 | | | | | | | | |
| CITY | Oklahoma City | STATE | OK | ZIP | 73112 | | | | |

| | | | | | | | | | |
|-------------|--|--|--|--|--|--|--|--|--|
| 640 Acres | | | | | | | | | |
| X | | | | | | | | | |
| W | | | | | | | | | |
| E | | | | | | | | | |
| LOCATE WELL | | | | | | | | | |

COMPLETION TYPE

| | |
|---|----------------|
| <input checked="" type="checkbox"/> SINGLE ZONE | |
| <input type="checkbox"/> MULTIPLE ZONE | |
| Application Date | |
| <input type="checkbox"/> COMMINGLED | |
| Application Date | |
| LOCATION EXCEPTION ORDER | 701168 I.O. |
| INCREASED DENSITY ORDER NO. | 699428, 699429 |

CASING & CEMENT (Form 1002C must be attached)

| TYPE | SIZE | WEIGHT | GRADE | FEET | PSI | SAX | TOP OF CMT |
|--------------|-------|--------|-------|--------|-----|-------------|------------|
| CONDUCTOR | | | | | | | |
| SURFACE | 9 5/8 | 36 | J-55 | 1,005 | | 480 | SURFACE |
| INTERMEDIATE | | | | | | | |
| PRODUCTION | 5 1/2 | 20 | P-110 | 19,621 | | 2,275 | 44 |
| LINER | | | | | | | |
| | | | | | | TOTAL DEPTH | 19,628 |

PACKER @ _____ BRAND & TYPE _____ PLUG @ _____ TYPE _____ PLUG @ _____ TYPE _____
PACKER @ _____ BRAND & TYPE _____ PLUG @ _____ TYPE _____ PLUG @ _____ TYPE _____

COMPLETION & TEST DATA BY PRODUCING FORMATION

| | | | | | | | |
|---|--|--|--|--|--|--|--|
| FORMATION | WOODFORD | | | | | | |
| SPACING & SPACING ORDER NUMBER | 640/681030, 684522 - MU/701167 I.O. | | | | | | |
| CLASS: Oil, Gas, Dry, Inj, Disp, Comm Disp, Svc | OIL | | | | | | |
| PERFORATED INTERVALS | 9,560 - 19,548 | | | | | | |
| ACID/VOLUME | TOTAL ACID: 2,000 GALS 7.5% HCL | | | | | | |
| FRACTURE TREATMENT (Fluids/Prop Amounts) | TOTAL FLUID: 24,135,862 GALS TOTAL PROP: 25,090,500 LBS | | | | | | |

Reported to
Frac Focus

☒ Min Gas Allowable (165:10-17-7)
OR
☐ Oil Allowable (165:10-13-3)

Gas Purchaser/Measurer
First Sales Date

Enable Gathering & Processing
1/14/2020

INITIAL TEST DATA

| | | | | | | | |
|--------------------------|-----------|--|--|--|--|--|--|
| INITIAL TEST DATE | 1/19/2020 | | | | | | |
| OIL-BBL/DAY | 623 | | | | | | |
| OIL-GRAVITY (API) | 40 | | | | | | |
| GAS-MCF/DAY | 687 | | | | | | |
| GAS-OIL RATIO CU FT/BBL | 1,103 | | | | | | |
| WATER-BBL/DAY | 2,591 | | | | | | |
| PUMPING OR FLOWING | FLOWING | | | | | | |
| INITIAL SHUT-IN PRESSURE | 550 | | | | | | |
| CHOKE SIZE | 128 | | | | | | |
| FLOW TUBING PRESSURE | 390 | | | | | | |

A record of the formations drilled through, and pertinent remarks are presented on the reverse. I declare that I have knowledge of the contents of this report and am authorized by my organization to make this report, which was prepared by me or under my supervision and direction, with the data and facts stated herein to be true, correct, and complete to the best of my knowledge and belief.

| | | | | | |
|-----------|-------------------------------|------|---------------|---------------|------------------------------|
| SIGNATURE | Joni Reeder | DATE | 1/24/2020 | PHONE NUMBER | 405-246-3100 |
| ADDRESS | 3817 NW Expressway, Suite 500 | CITY | Oklahoma City | STATE | OK |
| | | ZIP | 73112 | EMAIL ADDRESS | joni_reeder@eogresources.com |

FORMATION RECORD

LEASE NAME

WELL NO. 4H

Were open hole logs run? ☐ yes ☒ no

Date Last log was run N/A

Was CO₂ encountered? ☐ yes ☒ no at what depths? _____

Was H₂S encountered? ☐ yes ☒ no at what depths? _____

Were unusual drilling circumstances encountered? ☐ yes ☒ no

If yes, briefly explain below:

[illegible]

A blank 10x10 grid for graphing. The grid is composed of 10 columns and 10 rows of squares. A thick horizontal line and a thick vertical line intersect at the center, dividing the grid into four 5x5 quadrants. The top-left quadrant contains a small number '4' in its top-right corner.

Directional surveys are required for all drainholes and directional wells.

A blank 10x10 grid for graphing, with a thick horizontal line across the middle and a thick vertical line down the middle, dividing it into four 5x5 quadrants. The title "Graphing" is centered at the top.

| | | | |
|----------------------|---------------------|---|--------|
| SEC | TWP | RGE | COUNTY |
| Spot Location | | | |
| 1/4 | 1/4 | 1/4 | 1/4 |
| Measured Total Depth | True Vertical Depth | BHL From Lease, Unit, or Property Line: | |

| | | | | | | | | | | | |
|----------------------|----|-----|-------|---------------------|----------------|-------------------------|-----|---|--------------|---------|-------|
| LATERAL #1 | | | | | | | | | | | |
| SEC | 11 | TWP | 8N | RGE | 4W | COUNTY | | | | MCCLAIN | |
| Spot Location | | | | | | Feet From 1/4 Sec Lines | | FNL | 174 | FWL | 2,370 |
| NE | | 1/4 | NE | | 1/4 | NE | | 1/4 | NW | 1/4 | |
| Depth of Deviation | | | 8,985 | | Radius of Turn | | 948 | | Direction | | 360 |
| | | | | | | | | | Total Length | | 9,695 |
| Measured Total Depth | | | | True Vertical Depth | | | | BHL From Lease, Unit, or Property Line: | | | |
| 19,628 | | | | 9,159 | | | | 174 | | | |

| | | | | | | |
|----------------------|-----|---------------------|--------|---|--------------|-----|
| SEC | TWP | RGE | COUNTY | | | |
| Spot Location | | | | | | |
| 1/4 | 1/4 | 1/4 | 1/4 | Feet From 1/4 Sec Lines | FSL | FWL |
| Depth of Deviation | | Radius of Turn | | Direction | Total Length | |
| Measured Total Depth | | True Vertical Depth | | BHL From Lease, Unit, or Property Line: | | |

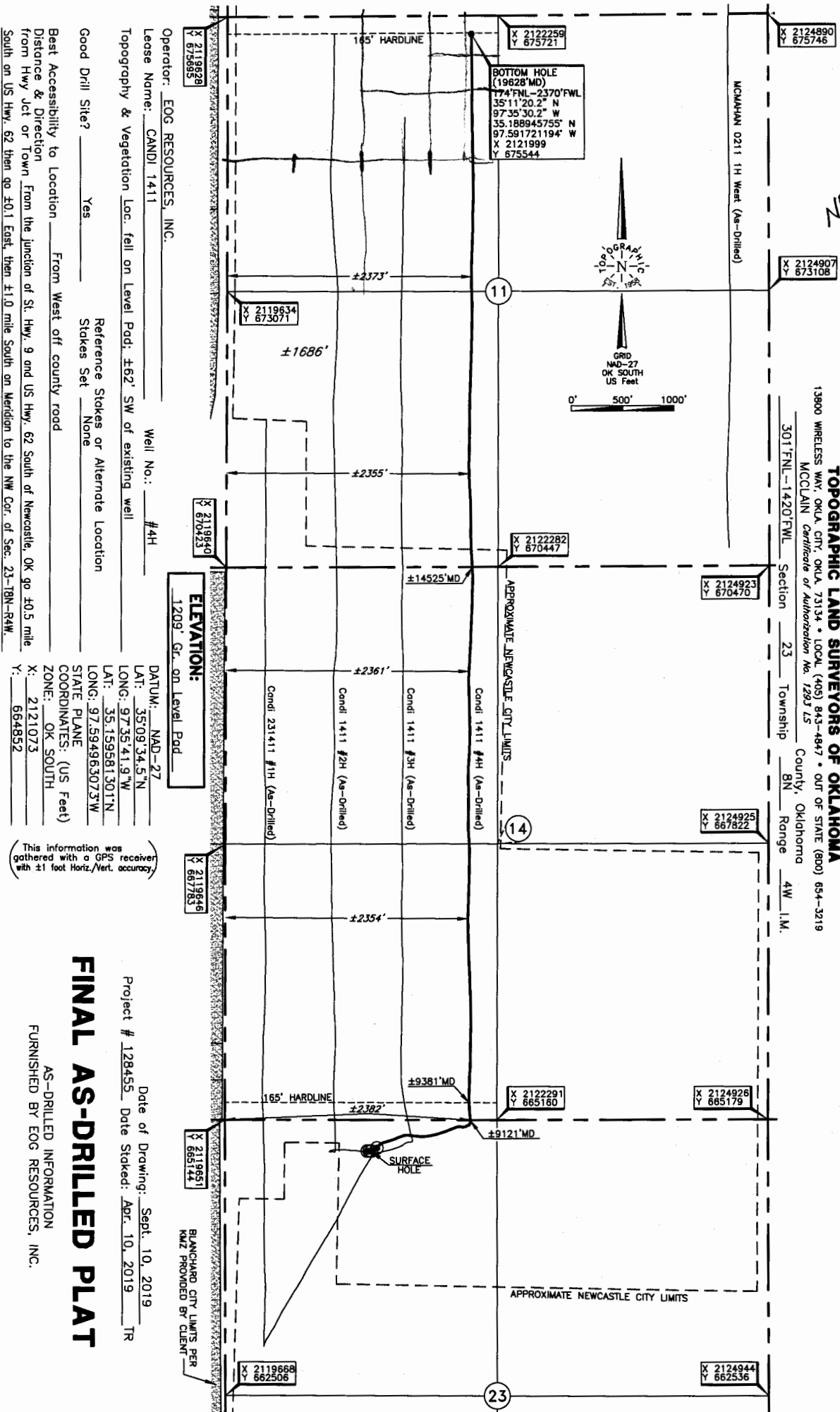
| | | | | | | |
|----------------------|----------------|---------------------|---|-------------------------|-----|-----|
| SEC | TWP | RGE | COUNTY | | | |
| Spot Location | | | | Feet From 1/4 Sec Lines | FSL | FWL |
| 1/4 | 1/4 | 1/4 | 1/4 | | | |
| Depth of Deviation | Radius of Turn | | Direction | Total Length | | |
| Measured Total Depth | | True Vertical Depth | BHL From Lease, Unit, or Property Line: | | | |

Image @ 1002A

BHL
NE NE NE NW

TOPOGRAPHIC LAND SURVEYORS OF OKLAHOMA

13800 WIRELESS WAY, OKLA. CITY, OKLA. 73134 • LOCAL (405) 843-4847 • OUT OF STATE (800) 654-3219
MCCLAIN Certificate of Authorization No. 1293 LS
County, Oklahoma
Section 23 Township 8N Range 4W 1.M.



(This information was gathered with a GPS receiver with ± 1 foot Horiz./Vert. accuracy.)

FINAL AS-DRILLED PLAT

AS-DRILLED INFORMATION
FURNISHED BY EOG RESOURCES, INC.

Date of Drawing: Sept. 10, 2019
Project # 128455 Date Staked: Apr. 10, 2019 TR

Operator: EOG RESOURCES, INC.
Lease Name: CANDI 1411 Well No.: #4H
Topography & Vegetation Loc. fell on Level Pad: $\pm 62'$ SW of existing well
Good Drill Site? Yes
Reference Stakes or Alternate Location
Stakes Set None
Best Accessibility to Location From West off county road
Distance & Direction From the junction of St. Hwy. 9 and US Hwy. 62 South of Newcastle, OK go ± 0.5 mile
South on US Hwy. 62 then go ± 0.1 East, then ± 1.0 mile South on Meridian to the NW Cor. of Sec. 23-18N-4W.
DATUM: NAD-27
LAT: 35° 09' 34.5" N
LONG: 97° 35' 41.9" W
LAT: 35° 15' 58.1" N
LONG: 97° 35' 30.7" W
STATE PLANE
COORDINATES: (US Feet)
ZONE: OK SOUTH
X: 2121073
Y: 664852

BLANCHARD CITY LIMITS PER
KMZ PROVIDED BY CLIENT