

Oklahoma Corporation Commission  
Oil & Gas Conservation Division  
Post Office Box 52000  
Oklahoma City, Oklahoma 73152-2000  
Rule 165: 10-3-25

Form 1002A

API No.: 35019262510001

**Completion Report**

Spud Date: October 20, 2020

OTC Prod. Unit No.:

Drilling Finished Date: October 21, 2020

1st Prod Date:

Completion Date: November 10, 2020

**Drill Type: STRAIGHT HOLE**

**SERVICE WELL**

Well Name: OIL CITY UNIT 56

Purchaser/Measurer:

Location: CARTER 27 3S 2W  
SW NW SW NW  
825 FSL 165 FWL of 1/4 SEC  
Derrick Elevation: 998 Ground Elevation: 992

First Sales Date:

Operator: KODIAK OIL & GAS INC 23226

204 N WALNUT ST  
MUENSTER, TX 76252-2766

Completion Type		Location Exception		Increased Density	
X	Single Zone	Order No		Order No	
	Multiple Zone	There are no Location Exception records to display.		There are no Increased Density records to display.	
	Commingled				

Casing and Cement							
Type	Size	Weight	Grade	Feet	PSI	SAX	Top of CMT
PRODUCTION	4 1/2	10.5	J	1114		220	SURFACE

Liner								
Type	Size	Weight	Grade	Length	PSI	SAX	Top Depth	Bottom Depth
There are no Liner records to display.								

**Total Depth: 1200**

Packer		Plug	
Depth	Brand & Type	Depth	Plug Type
930	BAKER AD 1	1114	PBTD

Initial Test Data										
Test Date	Formation	Oil BBL/Day	Oil-Gravity (API)	Gas MCF/Day	Gas-Oil Ratio Cu FT/BBL	Water BBL/Day	Pumpin or Flowing	Initial Shut-In Pressure	Choke Size	Flow Tubing Pressure
There are no Initial Data records to display.										

Completion and Test Data by Producing Formation			
Formation Name: PONTOTOC		Code: 419PNTC	Class: INJ
<b>Spacing Orders</b>		<b>Perforated Intervals</b>	
<b>Order No</b>	<b>Unit Size</b>	<b>From</b>	<b>To</b>
UNSPACED		956	966
		970	978
		992	1004
<b>Acid Volumes</b>		<b>Fracture Treatments</b>	
500 GALLONS 7 1/2%		NONE	

Formation	Top
PONTOTOC	830

Were open hole logs run? Yes

Date last log run: October 21, 2020

Were unusual drilling circumstances encountered? No

Explanation:

Other Remarks
OCC - UIC PERMIT # 1706920017

FOR COMMISSION USE ONLY	
Status: Accepted	1145845

API NO. 35-019-26251X  
OTC PROD.  
UNIT NO.

Oil and Gas Conservation Division  
P.O. Box 52000  
Oklahoma City, OK 73152-2000  
405-522-0577  
OCCCentralProcessing@OCC.OK.GOV

OKLAHOMA  
Corporation  
Commission

Form 1002A  
Rev. 2020

ORIGINAL  
AMENDED (Reason)

EXPIRED PERMIT

Rule 165:10-3-25

COMPLETION REPORT

TYPE OF DRILLING OPERATION

☒ STRAIGHT HOLE ☐ DIRECTIONAL HOLE ☐ HORIZONTAL HOLE  
☒ SERVICE WELL  
If directional or horizontal, see reverse for bottom hole location.

SPUD DATE 10-20-2020

DRLG FINISHED DATE 10-21-2020

DATE OF WELL COMPLETION 11-10-2020

COUNTY CARTER SEC 27 TWP 3S RGE 2W

LEASE NAME OIL CITY UNIT WELL NO. 56

1st PROD DATE

SW 1/4 NW 1/4 SW 1/4 NW 1/4 F&S 825 F&S 165

RECOMP DATE

ELEVATION Derrick FL 998 Ground 992 Latitude

Longitude

OPERATOR NAME KODIAK OIL & GAS INC

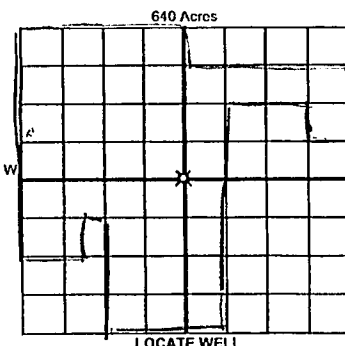
OTC / OCC OPERATOR NO. 23226

ADDRESS 204 N WALNUT ST

CITY MUENSTER

STATE TX

ZIP 76252



COMPLETION TYPE

☒ SINGLE ZONE  
☐ MULTIPLE ZONE  
☐ COMMINGLED  
LOCATION EXCEPTION ORDER NO.  
MULTIUNIT ORDER NO.  
INCREASED DENSITY ORDER NO.

CASING & CEMENT (Attach Form 1002C)

TYPE	SIZE	WEIGHT	GRADE	FEET	PSI	SAX	TOP OF CMT
CONDUCTOR							
SURFACE							
INTERMEDIATE							
PRODUCTION	4 1/2	10.5	J	1114		220	SURFACE
LINER							

PACKER @ 930 BRAND & TYPE Baker AD

PLUG @ 1114 TYPE PBID

TOTAL DEPTH 1200

COMPLETION & TEST DATA BY PRODUCING FORMATION

FORMATION	PONTOTAC							No Frac
SPACING & SPACING ORDER NUMBER	UNSPACED							
CLASS: Oil, Gas, Dry, Inj, Disp, Comm Disp, Svc	Inj							
PERFORATED INTERVALS	956-966 970-978 992-1004							
ACID/VOLUME	500 GAL 7 1/2%							
FRACTURE TREATMENT (Fluids/Prop Amounts)	NO							

RECEIVED

NOV 13 2020

Oklahoma Corporation  
Commission

Min Gas Allowable (165:10-17-7)

OR

Oil Allowable (165:10-13-3)

Purchaser/Measurer

First Sales Date

INITIAL TEST DATA

INITIAL TEST DATE							
OIL-BBL/DAY							
OIL-GRAVITY (API)							
GAS-MCF/DAY							
GAS-OIL RATIO CU FT/BBL							
WATER-BBL/DAY							
PUMPING OR FLOWING							
INITIAL SHUT-IN PRESSURE							
CHOKE SIZE							
FLOW TUBING PRESSURE							

A record of the formations drilled through and pertinent remarks are presented on the reverse. I declare that I have knowledge of the contents of this report and am authorized by my organization to make this report, which was prepared by me or under my supervision and direction, with the data and facts stated herein to be true, correct, and complete to the best of my knowledge and belief.

SIGNATURE

NAME (PRINT OR TYPE)

DATE

PHONE NUMBER

ADDRESS

CITY

STATE

ZIP

EMAIL ADDRESS

PLEASE TYPE OR USE BLACK INK ONLY

FORMATION RECORD

Give formation names and tops, if available, or descriptions and thickness of formations drilled through. Show intervals cored or drillstem tested.

NAMES OF FORMATIONS	TOP
PONTOTOC	830

LEASE NAME \_\_\_\_\_ OIL CITY UNIT \_\_\_\_\_ WELL NO. \_\_\_\_\_

FOR COMMISSION USE ONLY	
ITD on file <input type="checkbox"/> YES <input type="checkbox"/> NO	
APPROVED _____	DISAPPROVED _____
2) Reject Codes	
_____	
_____	
_____	
_____	

Were open hole logs run?	<input checked="" type="radio"/> yes <input type="radio"/> no
Date Last log was run	10-21-2020
Was CO <sub>2</sub> encountered?	<input type="radio"/> yes <input checked="" type="radio"/> no at what depths? _____
Was H <sub>2</sub> S encountered?	<input type="radio"/> yes <input checked="" type="radio"/> no at what depths? _____
Were unusual drilling circumstances encountered?	<input type="radio"/> yes <input checked="" type="radio"/> no
If yes, briefly explain below	

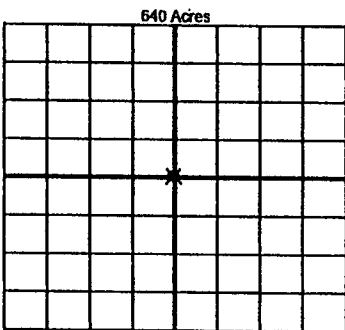
Other remarks: DCC - UIC permit # 1706920017

\_\_\_\_\_

\_\_\_\_\_

\_\_\_\_\_

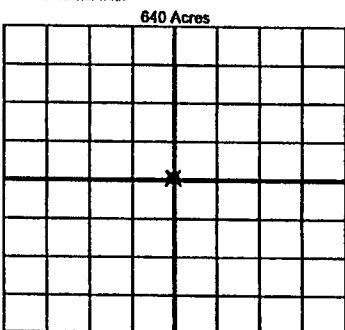
\_\_\_\_\_



If more than three drainholes are proposed, attach a separate sheet indicating the necessary information.

Direction must be stated in degrees azimuth. Please note, the horizontal drainhole and its end point must be located within the boundaries of the lease or spacing unit.

Directional surveys are required for all drainholes and directional wells



BOTTOM HOLE LOCATION FOR DIRECTIONAL HOLE

SEC	TWP	RGE	COUNTY
1/4	1/4	1/4	1/4
Measured Total Depth		True Vertical Depth	Feet From 1/4 Sec Lines
BHL From Lease, Unit, or Property Line:			

BOTTOM HOLE LOCATION FOR HORIZONTAL HOLE: (LATERALS)

LATERAL #1			
SEC	TWP	RGE	COUNTY
1/4	1/4	1/4	1/4
Depth of Deviation		Radius of Turn	Direction
Measured Total Depth		True Vertical Depth	Total Length
BHL From Lease, Unit, or Property Line:			

LATERAL #2			
SEC	TWP	RGE	COUNTY
1/4	1/4	1/4	1/4
Depth of Deviation		Radius of Turn	Direction
Measured Total Depth		True Vertical Depth	Total Length
BHL From Lease, Unit, or Property Line:			

LATERAL #3			
SEC	TWP	RGE	COUNTY
1/4	1/4	1/4	1/4
Depth of Deviation		Radius of Turn	Direction
Measured Total Depth		True Vertical Depth	Total Length
BHL From Lease, Unit, or Property Line:			