

Oklahoma Corporation Commission  
Oil & Gas Conservation Division  
Post Office Box 52000  
Oklahoma City, Oklahoma 73152-2000  
Rule 165: 10-3-25

Form 1002A

API No.: 35071249090000

**Completion Report**

Spud Date: August 29, 2019

OTC Prod. Unit No.:

Drilling Finished Date: September 05, 2019

1st Prod Date:

Completion Date: October 02, 2019

**Drill Type: STRAIGHT HOLE**

Well Name: ETU 32-1

Purchaser/Measurer:

Location: KAY 32 25N 1E  
C SE NW NW  
990 FNL 990 FWL of 1/4 SEC  
Latitude: 36.6054907 Longitude: -97.2254455  
Derrick Elevation: 943 Ground Elevation: 940

First Sales Date:

Operator: SNR NORTHERN OKLAHOMA OPERATING LLC 24280  
PO BOX 18251  
301 NW 63RD ST STE 400  
OKLAHOMA CITY, OK 73154-0251

Completion Type		Location Exception		Increased Density	
X	Single Zone	Order No		Order No	
	Multiple Zone	There are no Location Exception records to display.		There are no Increased Density records to display.	
	Commingled				

Casing and Cement							
Type	Size	Weight	Grade	Feet	PSI	SAX	Top of CMT
SURFACE	8.625	24	J-55	294		200	SURFACE
PRODUCTION	5.5	17	J-55	4698		275	2550

Liner								
Type	Size	Weight	Grade	Length	PSI	SAX	Top Depth	Bottom Depth
There are no Liner records to display.								

**Total Depth: 4707**

Packer	
Depth	Brand & Type
There are no Packer records to display.	

Plug	
Depth	Plug Type
There are no Plug records to display.	

Initial Test Data										
Test Date	Formation	Oil BBL/Day	Oil-Gravity (API)	Gas MCF/Day	Gas-Oil Ratio Cu FT/BBL	Water BBL/Day	Pumpin or Flowing	Initial Shut-In Pressure	Choke Size	Flow Tubing Pressure
Oct 18, 2019	MISSISSIPPI LIME-MISSISSIPPI CHAT	30	44	120	1467	450	PUMPING		N/A	

Completion and Test Data by Producing Formation			
Formation Name: MISSISSIPPI LIME		Code: 351MSSLM	Class: OIL
<b>Spacing Orders</b>		<b>Perforated Intervals</b>	
<b>Order No</b>	<b>Unit Size</b>	<b>From</b>	<b>To</b>
65738	UNIT	4500	4620
611591	UNIT		
<b>Acid Volumes</b>		<b>Fracture Treatments</b>	
1,844 GALLONS 15% HCL		10,780 PUNDS 100 MESH SAND, 79,580 POUNDS 40/70 SAND, 6,834 BARRELS SALTWATER	
Formation Name: MISSISSIPPI LIME		Code: 351MSSLM	Class: OIL
<b>Spacing Orders</b>		<b>Perforated Intervals</b>	
<b>Order No</b>	<b>Unit Size</b>	<b>From</b>	<b>To</b>
65738	UNIT	4383	4460
611591	UNIT		
<b>Acid Volumes</b>		<b>Fracture Treatments</b>	
ACIDIZED WITH MISSISSIPPI CHAT		FRAC'D WITH MISSISSIPPI CHAT	
Formation Name: MISSISSIPPI CHAT		Code: 401MSSCT	Class: OIL
<b>Spacing Orders</b>		<b>Perforated Intervals</b>	
<b>Order No</b>	<b>Unit Size</b>	<b>From</b>	<b>To</b>
65738	UNIT	4323	4332
611591	UNIT		
<b>Acid Volumes</b>		<b>Fracture Treatments</b>	
6,060 GALLONS 15% HCL		10,710 POUNDS 100 MESH SAND, 91,090 POUNDS 40/70 SAND, 7,150 BARRELS SALTWATER	
Formation Name: MISSISSIPPI LIME- MISSISSIPPI CHAT		Code:	Class: OIL

Formation	Top
PAWHUSKA	1865
OREAD	2199
TONKAWA	2531
LAYTON	3220
CLEVELAND	3593
SKINNER	3972
RED FORK	4040

Were open hole logs run? Yes

Date last log run: September 03, 2019

Were unusual drilling circumstances encountered? No

Explanation:

MISSISSIPPI CHAT	4330
MISSISSIPPI LIME	4341
WOODFORD	4640
WILCOX	4671

<b>Other Remarks</b>
There are no Other Remarks.

<b>FOR COMMISSION USE ONLY</b>	
Status: Accepted	1144239

API NO. 071-24909  
OTC PROD.  
UNIT NO.

(PLEASE TYPE OR USE BLACK INK ONLY)

OKLAHOMA CORPORATION COMMISSION  
Oil & Gas Conservation Division  
Post Office Box 52000  
Oklahoma City, Oklahoma 73152-2000  
Rule 165:10-3-25

RECEIVED

Form 1002A  
Rev. 2009

NOV 04 2019

OKLAHOMA CORPORATION  
COMMISSION  
640 Acres

☒ ORIGINAL  
☐ AMENDED (Reason) \_\_\_\_\_

TYPE OF DRILLING OPERATION

☒ STRAIGHT HOLE ☐ DIRECTIONAL HOLE ☐ HORIZONTAL HOLE  
☐ SERVICE WELL

If directional or horizontal, see reverse for bottom hole location.

COUNTY KAY SEC 32 TWP 25N RGE 01E  
LEASE NAME ETU WELL NO. 32-1  
C 1/4 SE 1/4 NW 1/4 NW 1/4 FNL OF 1/4 SEC 990 FWL OF 1/4 SEC 990  
ELEVATION 943 Ground 940 Latitude (if known) 36.6054907 Longitude (if known) -97.2254455  
OPERATOR NAME SNR Northern Oklahoma Operating, LLC OTC / OCC OPERATOR NO. 24280  
ADDRESS 301 NW 63rd St, Suite 400  
CITY Oklahoma City STATE OK ZIP 73116

SPUD DATE 08/29/19  
DRLG FINISHED DATE 09/05/19  
DATE OF WELL COMPLETION 10/02/19  
1st PROD DATE  
RECOMP DATE

W E  
LOCATE WELL

COMPLETION TYPE

☒ SINGLE ZONE  
☐ MULTIPLE ZONE  
Application Date  
☐ COMMINGLED  
Application Date  
LOCATION EXCEPTION ORDER NO.  
INCREASED DENSITY ORDER NO.

CASING & CEMENT (Attach Form 1002C)

TYPE	SIZE	WEIGHT	GRADE	FEET	PSI	SAX	TOP OF CMT
CONDUCTOR							
SURFACE	8.625	24	J-55	294		200	SURF
INTERMEDIATE							
PRODUCTION	5.5	17	J-55	4698		300 275	2550
LINER							

PACKER @ \_\_\_\_\_ BRAND & TYPE \_\_\_\_\_ PLUG @ \_\_\_\_\_ TYPE \_\_\_\_\_ PLUG @ \_\_\_\_\_ TYPE \_\_\_\_\_  
PACKER @ \_\_\_\_\_ BRAND & TYPE \_\_\_\_\_ PLUG @ \_\_\_\_\_ TYPE \_\_\_\_\_ PLUG @ \_\_\_\_\_ TYPE \_\_\_\_\_

TOTAL DEPTH 4707

Per 1002C

Per Joe Craig

COMPLETION & TEST DATA BY PRODUCING FORMATION

FORMATION	MISSISSIPPI LINE	MISSISSIPPI LINE	MISSISSIPPI LINE	Reported to Frac Focus
SPACING & SPACING ORDER NUMBER (unit)	65738/611591	(unit)	→	
CLASS: Oil, Gas, Dry, Inj, Disp, Comm Disp, Svc	OIL	OIL	oil	
PERFORATED INTERVALS	4500-4620	4383 4323-4460	4323-4332	
ACID/VOLUME	1844 GAL 15% HCL	6060 GAL 15% HCL		
FRACTURE TREATMENT (Fluids/Prop Amounts)	10,780 LB 100 MESH sand 79,580 LB 40/70 sand 6834 BBL SW saltwater	10,710 LB 100 MESH sand 91,090 LB 40/70 sand 7150 BBL SW saltwater		

Min Gas Allowable (165:10-17-7)

☐

OR  
Oil Allowable (165:10-13-3)

Gas Purchaser/Measurer  
First Sales Date

INITIAL TEST DATA

INITIAL TEST DATE	10/18/2019				
OIL-BBL/DAY	30				
OIL-GRAVITY ( API)	44				
GAS-MCF/DAY	120				
GAS-OIL RATIO CU FT/BBL	1467				
WATER-BBL/DAY	450				
PUMPING OR FLOWING	PUMPING				
INITIAL SHUT-IN PRESSURE	N/A				
CHOKE SIZE	N/A				
FLOW TUBING PRESSURE	N/A				

AS SUBMITTED

A record of the formations drilled through, and pertinent remarks are presented on the reverse. I declare that I have knowledge of the contents of this report and am authorized by my organization to make this report, which was prepared by me or under my supervision and direction, with the data and facts stated herein to be true, correct, and complete to the best of my knowledge and belief.

SIGNATURE 301 NW 63RD ST ADDRESS  
Joe Craig NAME (PRINT OR TYPE) OKC CITY OK STATE 73116 ZIP  
10/31/2019 DATE 405-608-5702 PHONE NUMBER  
jcraig@sienanaturalresources.com EMAIL ADDRESS

**PLEASE TYPE OR USE BLACK INK ONLY**  
**FORMATION RECORD**

Give formation names and tops, if available, or descriptions and thickness of formations drilled through. Show intervals cored or drillstem tested.

NAMES OF FORMATIONS	TOP
Pawhuska	1,865
Oread	2,199
Tonkawa	2,531
Layton	3,220
Cleveland	3,593
Skinner	3,972
Red Fork	4,040
MISS Chat	4,330
MISS Lime	4,341
Woodford	4,640
Wilcox	4,671

LEASE NAME

OK

WELL NO.

**FOR COMMISSION USE ONLY**

ITD on file ☐ YES ☐ NO

APPROVED DISAPPROVED

2) Reject Codes

Were open hole logs run? ☒ yes ☐ no

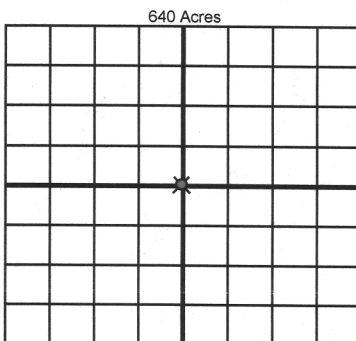
Date Last log was run 9/3/2019

Was CO<sub>2</sub> encountered? ☐ yes ☒ no at what depths? \_\_\_\_\_

Was H<sub>2</sub>S encountered? ☐ yes ☒ no at what depths? \_\_\_\_\_

Were unusual drilling circumstances encountered? ☐ yes ☒ no  
If yes, briefly explain below

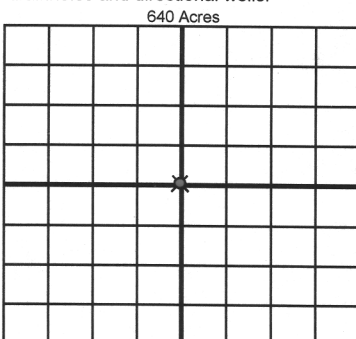
Other remarks:



If more than three drainholes are proposed, attach a separate sheet indicating the necessary information.

Direction must be stated in degrees azimuth.  
Please note, the horizontal drainhole and its end point must be located within the boundaries of the lease or spacing unit.

Directional surveys are required for all drainholes and directional wells.



**BOTTOM HOLE LOCATION FOR DIRECTIONAL HOLE**

SEC	TWP	RGE	COUNTY
Spot Location	1/4	1/4	1/4
Measured Total Depth	True Vertical Depth	BHL From Lease, Unit, or Property Line:	Feet From 1/4 Sec Lines FSL FWL

**BOTTOM HOLE LOCATION FOR HORIZONTAL HOLE: (LATERALS)**

**LATERAL #1**

SEC	TWP	RGE	COUNTY
Spot Location	1/4	1/4	1/4
Depth of Deviation	Radius of Turn	Direction	Total Length
Measured Total Depth	True Vertical Depth	BHL From Lease, Unit, or Property Line:	Feet From 1/4 Sec Lines FSL FWL

**LATERAL #2**

SEC	TWP	RGE	COUNTY
Spot Location	1/4	1/4	1/4
Depth of Deviation	Radius of Turn	Direction	Total Length
Measured Total Depth	True Vertical Depth	BHL From Lease, Unit, or Property Line:	Feet From 1/4 Sec Lines FSL FWL

**LATERAL #3**

SEC	TWP	RGE	COUNTY
Spot Location	1/4	1/4	1/4
Depth of Deviation	Radius of Turn	Direction	Total Length
Measured Total Depth	True Vertical Depth	BHL From Lease, Unit, or Property Line:	Feet From 1/4 Sec Lines FSL FWL

ETU-32-1

COMPLETION & TEST DATA BY PRODUCING FORMATION			
FORMATION	MISS	MISS	MISS CHAT
SPACING & SPACING ORDER NUMBER	65738/611591		
CLASS: Oil, Gas, Dry, Inj, Disp, Comm Disp, Svc	OIL	OIL	OIL
PERFORATED INTERVALS			
	4500-4620	4383-4460	4323-4332
ACID/VOLUME	1844 GAL 15% HCL	6060 GAL 15% HCL	
FRACTURE TREATMENT (Fluids/Prop Amounts)	10,780 LB 100 MESH	10,710 LB 100 MESH	
	79,580 LB 40/70	91,090 LB 40/70	
	6834 BBL SW	7150 BBL SW	

Please let me know if this isn't how we need to submit, and thanks again,

**Joe Craig**

Siena Natural Resources, LLC | P: 405.608.5702

---

**From:** Dennis Niskern <Dennis.Niskern@occ.ok.gov>

**Sent:** Friday, November 8, 2019 10:49 AM

**To:** Joe Craig <jcraig@sienanaturalresources.com>

**Subject:** 1002A's on two wells ETU 29-2 and ETU 32-1

Joe, same problems on both well's documents. Neither well had Form 1002C's (cementing reports) attached for both surface and production casing strings. Form 1002C's are created by the cementing company and provided to the operator to sign as well and submit with the 1002A. Please locate and mail to address at top of form to my attention. Neither well had a total depth shown please provide that information. This last problem is for each well what are the perforations by the different Formations Mississippi Lime and perforations in the Mississippi Chat. That is how we show completions on a 1002A I understand by what I see on both 1002A's That part of the Mississippi Lime was stimulated with the Mississippi Chat please provide this data. If you have questions call me 405-522-2977.