

Oklahoma Corporation Commission
Oil & Gas Conservation Division
Post Office Box 52000
Oklahoma City, Oklahoma 73152-2000
Rule 165: 10-3-25

Form 1002A

API No.: 35071249080000

Completion Report

Spud Date: September 06, 2019

OTC Prod. Unit No.:

Drilling Finished Date: September 15, 2019

1st Prod Date: October 25, 2019

Completion Date: October 10, 2019

Drill Type: STRAIGHT HOLE

Well Name: ETU 29-2

Purchaser/Measurer:

Location: KAY 29 25N 1E
N2 SE NE SW
1700 FSL 2310 FWL of 1/4 SEC
Latitude: 36.612911 Longitude: -97.220774
Derrick Elevation: 942 Ground Elevation: 939

First Sales Date:

Operator: SNR NORTHERN OKLAHOMA OPERATING LLC 24280
PO BOX 18251
301 NW 63RD ST STE 400
OKLAHOMA CITY, OK 73154-0251

Completion Type		Location Exception		Increased Density	
X	Single Zone	Order No		Order No	
	Multiple Zone	There are no Location Exception records to display.		There are no Increased Density records to display.	
	Commingled				

Casing and Cement							
Type	Size	Weight	Grade	Feet	PSI	SAX	Top of CMT
SURFACE	8.625	24	J-55	294		230	SURFACE
PRODUCTION	5.5	17	J-55	4746		275	2720

Liner								
Type	Size	Weight	Grade	Length	PSI	SAX	Top Depth	Bottom Depth
There are no Liner records to display.								

Total Depth: 4756

Packer		Plug	
Depth	Brand & Type	Depth	Plug Type
There are no Packer records to display.		There are no Plug records to display.	

Initial Test Data										
Test Date	Formation	Oil BBL/Day	Oil-Gravity (API)	Gas MCF/Day	Gas-Oil Ratio Cu FT/BBL	Water BBL/Day	Pumpin or Flowing	Initial Shut-In Pressure	Choke Size	Flow Tubing Pressure
Oct 22, 2019	MISSISSIPPI LIME-MISSISSIPPI CHAT	30	44	90	3000	400	PUMPING		N/A	

Completion and Test Data by Producing Formation			
Formation Name: MISSISSIPPI LIME		Code: 351MSSLM	Class: OIL
Spacing Orders		Perforated Intervals	
Order No	Unit Size	From	To
65738	UNIT	4452	4550
611591	UNIT		
Acid Volumes		Fracture Treatments	
1,675 GALLONS		10,070 POUNDS 100 MESH SAND, 80,260 POUNDS 40/70 SAND, 6,753 BARRELS SALTWATER	
Formation Name: MISSISSIPPI LIME		Code: 351MSSLM	Class: OIL
Spacing Orders		Perforated Intervals	
Order No	Unit Size	From	To
65738	UNIT	4302	4406
611591	UNIT		
Acid Volumes		Fracture Treatments	
ACIDIZED WITH MISSISSIPPI CHAT		FRAC'D WITH MISSISSIPPI CHAT	
Formation Name: MISSISSIPPI CHAT		Code: 401MSSCT	Class: OIL
Spacing Orders		Perforated Intervals	
Order No	Unit Size	From	To
65738	UNIT	4269	4294
611591	UNIT		
Acid Volumes		Fracture Treatments	
5,082 GALLONS		10,740 POUNDS 100 MESH SAND, 83,170 POUNDS 40/70 SAND, 6,939 BARRELS SALTWATER	
Formation Name: MISSISSIPPI LIME- MISSISSIPPI CHAT		Code:	Class: OIL

Formation	Top
PAWHUSKA	1847
OREAD	2173
TONKAWA	2569
LAYTON	3188
CLEVELAND	3547
SKINNER	3969
RED FORK	4042

Were open hole logs run? Yes

Date last log run: September 14, 2019

Were unusual drilling circumstances encountered? No

Explanation:

MISSISSIPPI CHAT	4256
MISSISSIPPI LIME	4297
WOODFORD	4626
VIOLA	4663

Other Remarks
There are no Other Remarks.

FOR COMMISSION USE ONLY	
Status: Accepted	1144240

RECEIVED

Form 1002A
Rev. 2009

NOV 04 2019

OKLAHOMA CORPORATION
COMMISSION

API NO. 071-24908
OTC PROD.
UNIT NO.

(PLEASE TYPE OR USE BLACK INK ONLY)

OKLAHOMA CORPORATION COMMISSION
Oil & Gas Conservation Division
Post Office Box 52000
Oklahoma City, Oklahoma 73152-2000
Rule 165:10-3-25

☒ ORIGINAL
☐ AMENDED (Reason) _____

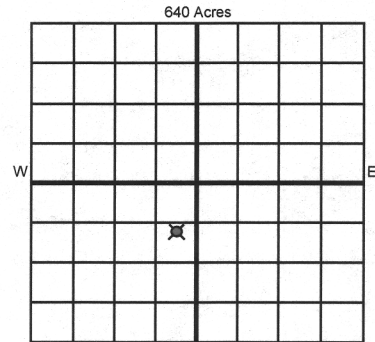
COMPLETION REPORT

TYPE OF DRILLING OPERATION

☒ STRAIGHT HOLE ☐ DIRECTIONAL HOLE ☐ HORIZONTAL HOLE
☐ SERVICE WELL

If directional or horizontal, see reverse for bottom hole location.

COUNTY	KAY	SEC	29	TWP	25N	RGE	01E	SPUD DATE	09/06/19
LEASE NAME	ETU			WELL NO.	29-2			DRLG FINISHED DATE	09/15/19
N2 1/4 SE 1/4 NE 1/4 SW 1/4	FSL OF 1/4 SEC 1700			FWL OF 1/4 SEC 2310			DATE OF WELL COMPLETION	10/10/19	
ELEVATION Derrick FL 942	Ground	939	Latitude (if known)	36.612911			Longitude (if known)	-97.220774	
OPERATOR NAME	SNR Northern Oklahoma Operating, LLC			OTC / OCC OPERATOR NO.	24280				
ADDRESS	301 NW 63rd Street, Suite 400								
CITY	Oklahoma City	STATE	OK	ZIP	73114				



COMPLETION TYPE

<input checked="" type="checkbox"/> SINGLE ZONE	
<input type="checkbox"/> MULTIPLE ZONE	
Application Date	
<input type="checkbox"/> COMMINGLED	
Application Date	
LOCATION EXCEPTION ORDER NO.	
INCREASED DENSITY ORDER NO.	

CASING & CEMENT (Attach Form 1002C)

TYPE	SIZE	WEIGHT	GRADE	FEET	PSI	SAX	TOP OF CMT
CONDUCTOR							
SURFACE	8.625	24	J-55	212 294		230	SURFACE
INTERMEDIATE							
PRODUCTION	5.5	17	J-55	4763 4746		300 275	2720
LINER							

PACKER @ _____ BRAND & TYPE _____ PLUG @ _____ TYPE _____ PLUG @ _____ TYPE _____
PACKER @ _____ BRAND & TYPE _____ PLUG @ _____ TYPE _____ PLUG @ _____ TYPE _____

TOTAL DEPTH 4756

COMPLETION & TEST DATA BY PRODUCING FORMATION

FORMATION	MISSISSIPPI	MISSISSIPPI	MISSISSIPPI Chat	Reported to Frac Focus
SPACING & SPACING ORDER NUMBER	(Unit) - 65738/611591	(Unit) - 4269/4302	4269	
CLASS: Oil, Gas, Dry, Inj, Disp, Comm Disp, Svc	OIL	OIL	Oil	
PERFORATED INTERVALS	4452	4406	4294	
ACID/VOLUME	1675 gals	5082 gals		
FRACTURE TREATMENT (Fluids/Prop Amounts)	10,070 LB 100 MESH sand	10,740 LB 100 MESH sand		
	80,260 LB 40/70 sand	83,170 LB 40/70 sand		
	6753 BBL SW - saltwater	6939 BBL SW saltwater		

Min Gas Allowable (165:10-17-7)

Gas Purchaser/Measurer

☐ OR
Oil Allowable (165:10-13-3)

First Sales Date

INITIAL TEST DATA

INITIAL TEST DATE	10/22/2019				
OIL-BBL/DAY	30				
OIL-GRAVITY (API)	44				
GAS-MCF/DAY	90				
GAS-OIL RATIO CU FT/BBL	3000				
WATER-BBL/DAY	400				
PUMPING OR FLOWING	PUMPING				
INITIAL SHUT-IN PRESSURE	N/A				
CHOKE SIZE	N/A				
FLOW TUBING PRESSURE	N/A				

AS SUBMITTED

A record of the formations drilled through, and pertinent remarks are presented on the reverse. I declare that I have knowledge of the contents of this report and am authorized by my organization to make this report, which was prepared by me or under my supervision and direction, with the data and facts stated herein to be true, correct, and complete to the best of my knowledge and belief.

SIGNATURE: Joe Craig NAME (PRINT OR TYPE): Joe Craig DATE: 10/31/2019 PHONE NUMBER: 405-608-5702
ADDRESS: 301 NW 63RD ST CITY: OKC STATE: OK ZIP: 73116 EMAIL ADDRESS: jcraig@sienanaturalresources.com

PLEASE TYPE OR USE BLACK INK ONLY
FORMATION RECORD

Give formation names and tops, if available, or descriptions and thickness of formations drilled through. Show intervals cored or drillstem tested.

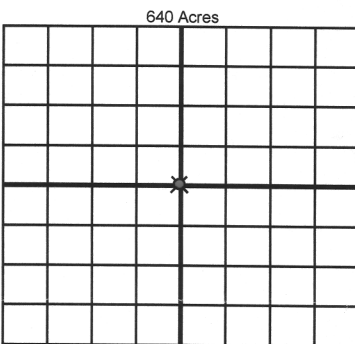
NAMES OF FORMATIONS	TOP
Pawhuska	1,847
Oread	2,173
Tonkawa	2,569
Layton	3,188
Cleveland	3,547
Skinner	3,969
Red Fork	4,042
MISS Chat	4,256
MISS Lime	4,297
Woodford	4,626
Viola	4,663

LEASE NAME ETU WELL NO. 29-2

FOR COMMISSION USE ONLY		
ITD on file	<input type="checkbox"/> YES	<input type="checkbox"/> NO
APPROVED	DISAPPROVED	2) Reject Codes
<div style="border-bottom: 1px solid black; height: 15px; width: 100%;"></div> <div style="border-bottom: 1px solid black; height: 15px; width: 100%;"></div> <div style="border-bottom: 1px solid black; height: 15px; width: 100%;"></div> <div style="border-bottom: 1px solid black; height: 15px; width: 100%;"></div>		

Were open hole logs run?	<input checked="" type="checkbox"/> yes	<input type="checkbox"/> no
Date Last log was run	<u>9/14/2019</u>	
Was CO ₂ encountered?	<input type="checkbox"/> yes	<input checked="" type="checkbox"/> no at what depths? _____
Was H ₂ S encountered?	<input type="checkbox"/> yes	<input checked="" type="checkbox"/> no at what depths? _____
Were unusual drilling circumstances encountered?	<input type="checkbox"/> yes <input checked="" type="checkbox"/> no	
If yes, briefly explain below		

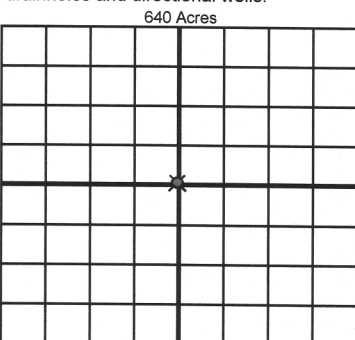
Other remarks:



If more than three drainholes are proposed, attach a separate sheet indicating the necessary information.

Direction must be stated in degrees azimuth.
Please note, the horizontal drainhole and its end point must be located within the boundaries of the lease or spacing unit.

Directional surveys are required for all drainholes and directional wells.



BOTTOM HOLE LOCATION FOR DIRECTIONAL HOLE

SEC	TWP	RGE	COUNTY
Spot Location			
1/4	1/4	1/4	1/4
Measured Total Depth		True Vertical Depth	Feet From 1/4 Sec Lines FSL FWL
BHL From Lease, Unit, or Property Line:			

BOTTOM HOLE LOCATION FOR HORIZONTAL HOLE: (LATERALS)

LATERAL #1

SEC	TWP	RGE	COUNTY
Spot Location			
1/4	1/4	1/4	1/4
Depth of Deviation		Radius of Turn	Direction
Measured Total Depth		True Vertical Depth	Total Length
BHL From Lease, Unit, or Property Line:			

LATERAL #2

SEC	TWP	RGE	COUNTY
Spot Location			
1/4	1/4	1/4	1/4
Depth of Deviation		Radius of Turn	Direction
Measured Total Depth		True Vertical Depth	Total Length
BHL From Lease, Unit, or Property Line:			

LATERAL #3

SEC	TWP	RGE	COUNTY
Spot Location			
1/4	1/4	1/4	1/4
Depth of Deviation		Radius of Turn	Direction
Measured Total Depth		True Vertical Depth	Total Length
BHL From Lease, Unit, or Property Line:			

Dennis Niskern

From: Joe Craig <jcraig@sienanaturalresources.com>
Sent: Friday, November 8, 2019 11:58 AM
To: Dennis Niskern
Subject: [External] RE: 1002A's on two wells ETU 29-2 and ETU 32-1

Dennis,

Thanks again for guiding me in the right direction. 1002C has been sent to the cementing company and I'll get that back to you as soon as I get it.

For the perfs on the 1002A:

ETU 29-2, upper MISS and CHAT were stimulated as the one stage

COMPLETION & TEST DATA BY PRODUCING FORMATION

FORMATION	MISS	MISS	MISS CHAT
SPACING & SPACING ORDER NUMBER	65738/611591		
CLASS: Oil, Gas, Dry, Inj, Disp, Comm Disp, Svc	OIL	OIL	OIL
PERFORATED INTERVALS	4452	4302	4269
	4550	4406	4294
ACID/VOLUME	1675	5082	
FRACTURE TREATMENT (Fluids/Prop Amounts)	10,070 LB 100 MESH	10,740 LB 100 MESH	
	80,260 LB 40/70	83,170 LB 40/70	
	6753 BBL SW	6939 BBL SW	

ETU 32-1, upper MISS and CHAT were stimulated as the one stage