

Oklahoma Corporation Commission
Oil & Gas Conservation Division
Post Office Box 52000
Oklahoma City, Oklahoma 73152-2000
Rule 165: 10-3-25

Form 1002A

API No.: 35051243750000

Completion Report

Spud Date: July 26, 2018

OTC Prod. Unit No.:

Drilling Finished Date: August 23, 2018

1st Prod Date: October 10, 2018

Completion Date: September 29, 2018

Drill Type: HORIZONTAL HOLE

Well Name: NORGE-MARCHAND UNIT 14-2-1H

Purchaser/Measurer: DCP MIDSTREAM

Location: GRADY 14 7N 8W
NW SW NE NE
713 FNL 999 FEL of 1/4 SEC
Latitude: 35.08508 Longitude: -98.00701
Derrick Elevation: 1120 Ground Elevation: 1101

First Sales Date: 09/29/2018

Operator: LIME ROCK RESOURCES III-A LP 23577

1111 BAGBY ST STE 4600
HOUSTON, TX 77002-2559

Completion Type		Location Exception		Increased Density	
X	Single Zone	Order No		Order No	
	Multiple Zone	There are no Location Exception records to display.		There are no Increased Density records to display.	
	Commingled				

Casing and Cement							
Type	Size	Weight	Grade	Feet	PSI	SAX	Top of CMT
SURFACE	9 5/8	36.0	J55	968		275	SURFACE
PRODUCTION	7	29.0	P110	9656		420	8530

Liner								
Type	Size	Weight	Grade	Length	PSI	SAX	Top Depth	Bottom Depth
LINER	4 1/2	13.5	P110	7457	0	610	9284	16741

Total Depth: 16892

Packer		Plug	
Depth	Brand & Type	Depth	Plug Type
9225	BAKER AS-1X	There are no Plug records to display.	

Initial Test Data										
Test Date	Formation	Oil BBL/Day	Oil-Gravity (API)	Gas MCF/Day	Gas-Oil Ratio Cu FT/BBL	Water BBL/Day	Pumpin or Flowing	Initial Shut-In Pressure	Choke Size	Flow Tubing Pressure
Oct 11, 2018	MARCHAND	486	43.5	526	1082	393	PUMPING		64/64	3000

Completion and Test Data by Producing Formation			
Formation Name: MARCHAND		Code: 405MRCD	Class: OIL
Spacing Orders		Perforated Intervals	
Order No	Unit Size	From	To
100904	UNIT	11020	16650
Acid Volumes		Fracture Treatments	
60 BBLS 15% HCL ACID		220,540 GAL FLUID 1,994,620 LBS 100 MESH PROPPANT	

Formation	Top
UPPER WADE	8184
LOWER WADE	8473
MEDRANO	8931
MEDRANO MASSIVE	9002
LAYTON	9666
HOGSHOOTER	10004
MARCHAND SHALE	10204
MARCHAND SHALE (BASE)	10229
MARCHAND SAND	10251

Were open hole logs run? No
Date last log run:

Were unusual drilling circumstances encountered? No
Explanation:

Other Remarks
There are no Other Remarks.

Lateral Holes
Sec: 2 TWP: 7N RGE: 8W County: GRADY NE SW SE SE 371 FSL 964 FEL of 1/4 SEC Depth of Deviation: 9705 Radius of Turn: 722 Direction: 359 Total Length: 4447 Measured Total Depth: 16892 True Vertical Depth: 10165 End Pt. Location From Release, Unit or Property Line: 371

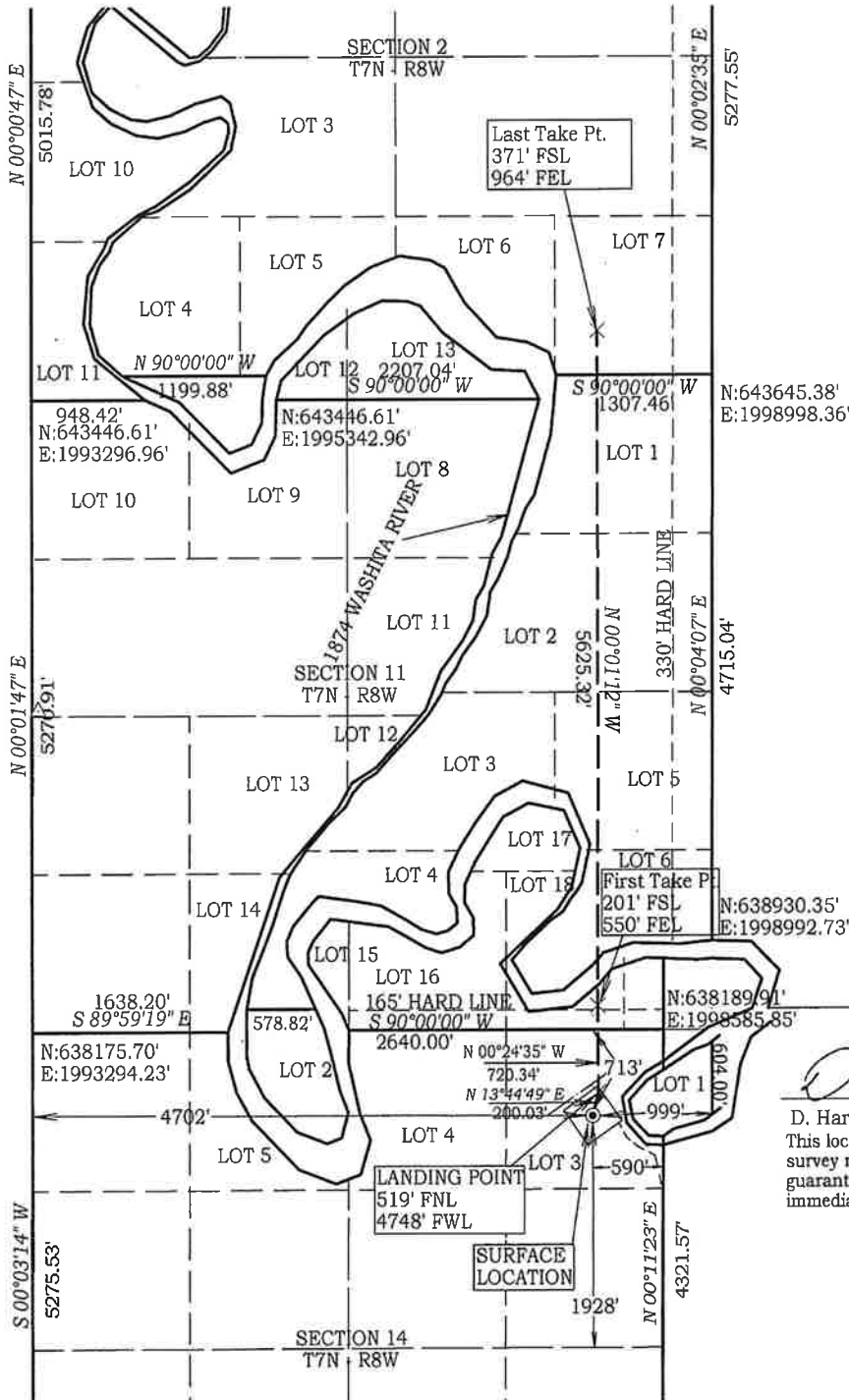
FOR COMMISSION USE ONLY	
Status: Accepted	1144218

As-Drilled Plat
M & M Land Surveying, Inc.
520 "E" Street NW. Ardmore, OK. 73401
Office 580-226-0446 Mobile 580-221-4999

Company Name: Lime Rock Resources III-A, LP Lease Name: Norge-Marchand Unit 14-2-1H
 Section 14 Township 7 North Range 8 West County Grady Oklahoma

Surface Location 713' FNL - 4702' FWL Elevation 1101'

ALL SECTION CORNER COORDINATES ARE NAD 27



NAD 27 OK SOUTH
 Surface Location
 Latitude: 35.085036°
 Longitude: 98.006705°
 Y = 637,477'
 X = 1,997,994'
 Landing Point
 Y = 637,671'
 X = 1,998,041'
 First Take Point
 Y = 638,391'
 X = 1,998,036'
 Last Take Point
 Y = 644,017'
 X = 1,998,034'

NAD 83 OK SOUTH
 Surface Location
 Latitude: 35.085099°
 Longitude: 98.007028°
 Y = 637,518'
 X = 1,966,397'
 Landing Point
 Y = 637,712'
 X = 1,966,445'
 First Take Point
 Y = 638,433'
 X = 1,966,440'
 Last Take Point
 Y = 644,058'
 X = 1,966,438'

D. Harry McClintick 10/31/18
 D. Harry McClintick, R.P.L.S. # 1367, CA # 3093
 This location has been staked according to the best official survey records available to us, but its accuracy is not guaranteed. Please review this plat and notify us immediately of any discrepancy.



The coordinates for the well path for this location are CALCULATED ONLY and derived from data provided to me from Lime Rock Resources.