

Oklahoma Corporation Commission  
Oil & Gas Conservation Division  
Post Office Box 52000  
Oklahoma City, Oklahoma 73152-2000  
Rule 165: 10-3-25

Form 1002A

API No.: 35047243640001

**Completion Report**

Spud Date: June 15, 2004

OTC Prod. Unit No.: 047-098402-0-0000

Drilling Finished Date: June 28, 2004

**Amended**

1st Prod Date: August 20, 2004

Amend Reason: RECOMPLETION

Completion Date: July 30, 2004

Recomplete Date: November 15, 2019

**Drill Type: STRAIGHT HOLE**

Well Name: KISNER 55

Purchaser/Measurer:

Location: GARFIELD 19 22N 3W  
S2 N2 NW NW  
2240 FSL 660 FWL of 1/4 SEC  
Latitude: 36.374515 Longitude: -97.565777  
Derrick Elevation: 0 Ground Elevation: 1080

First Sales Date:

Operator: M M ENERGY INC 19118  
PO BOX 21904  
13927 QUAIL POINTE DR  
OKLAHOMA CITY, OK 73156-1904

Completion Type		Location Exception		Increased Density	
X	Single Zone	Order No		Order No	
	Multiple Zone	There are no Location Exception records to display.		There are no Increased Density records to display.	
	Commingled				

Casing and Cement							
Type	Size	Weight	Grade	Feet	PSI	SAX	Top of CMT
SURFACE	9 5/8		J	292		150	SURFACE
PRODUCTION	7	26	J	4445		750	SURFACE

Liner								
Type	Size	Weight	Grade	Length	PSI	SAX	Top Depth	Bottom Depth
There are no Liner records to display.								

**Total Depth: 4445**

Packer		Plug	
Depth	Brand & Type	Depth	Plug Type
There are no Packer records to display.		There are no Plug records to display.	

Initial Test Data
-------------------

Test Date	Formation	Oil BBL/Day	Oil-Gravity (API)	Gas MCF/Day	Gas-Oil Ratio Cu FT/BBL	Water BBL/Day	Pumpin or Flowing	Initial Shut-In Pressure	Choke Size	Flow Tubing Pressure
Nov 19, 2019	OSWEGO	25	40			250	PUMPING	450		

<b>Completion and Test Data by Producing Formation</b>					
Formation Name: OSWEGO		Code: 404OSWG		Class: OIL	
<b>Spacing Orders</b>		<b>Perforated Intervals</b>			
<b>Order No</b>	<b>Unit Size</b>	<b>From</b>		<b>To</b>	
NONE		4140		4176	
<b>Acid Volumes</b>		<b>Fracture Treatments</b>			
2,000 GALLONS		NONE			

Formation	Top
OSWEGO	4140

Were open hole logs run? No  
 Date last log run: June 30, 2004

Were unusual drilling circumstances encountered? No  
 Explanation:

<b>Other Remarks</b>
SQUEEZED LAYTON OFF WITH 40 SACKS CEMENT

<b>FOR COMMISSION USE ONLY</b>	
Status: Accepted	1144464

# RECEIVED

Form 1002A  
Rev. 2009

DEC 20 2019

API NO. 047-24364  
OTC PROD. UNIT NO. 047-098402-0-0000  
(PLEASE TYPE OR USE BLACK INK ONLY)

OKLAHOMA CORPORATION COMMISSION  
Oil & Gas Conservation Division  
Post Office Box 52000  
Oklahoma City, Oklahoma 73152-2000  
Rule 165:10-3-25

OKLAHOMA CORPORATION  
COMMISSION

☐ ORIGINAL  
☒ AMENDED (Reason) re-completion

## COMPLETION REPORT

TYPE OF DRILLING OPERATION  
☒ STRAIGHT HOLE ☐ DIRECTIONAL HOLE ☐ HORIZONTAL HOLE  
☐ SERVICE WELL  
If directional or horizontal, see reverse for bottom hole location.

SPUD DATE 6/15/2004  
DRLG FINISHED DATE 6/28/2004

COUNTY Garfield SEC 19 TWP 22n RGE 3W

DATE OF WELL COMPLETION 7/30/2004

LEASE NAME Kisner WELL NO. 55

1st PROD DATE 8/20/04

5/2 1/4 NW 1/4 NW 1/4 FSL OF 1/4 SEC 2240 FWL OF 1/4 SEC 660

RECOMP DATE 11-15/2019

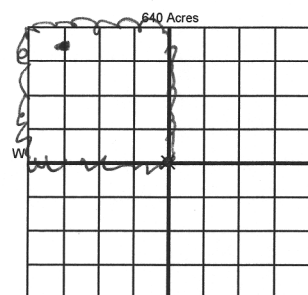
ELEVATION Ground 1080 Latitude (if known) 36.374515

Longitude (if known) -97.56577

OPERATOR NAME MM Energy OTC / OCC OPERATOR NO. 19118

ADDRESS P O Box 21904

CITY Oklahoma City STATE ZIP 73156



## COMPLETION TYPE

☒ SINGLE ZONE  
☐ MULTIPLE ZONE  
Application Date  
☐ COMMINGLED  
Application Date  
LOCATION EXCEPTION ORDER NO.  
INCREASED DENSITY ORDER NO.

## CASING & CEMENT (Attach Form 1002C)

TYPE	SIZE	WEIGHT	GRADE	FEET	PSI	SAX	TOP OF CMT
CONDUCTOR							
SURFACE	9 5/8		J	292		150	surface
INTERMEDIATE							
PRODUCTION	7	26 lb	J	4445		750	SURFACE
LINER							
TOTAL DEPTH						4,445	

PACKER @ BRAND & TYPE PLUG @ TYPE PLUG @ TYPE  
PACKER @ BRAND & TYPE PLUG @ TYPE PLUG @ TYPE

## COMPLETION & TEST DATA BY PRODUCING FORMATION

FORMATION	Oswego						No Frac
SPACING & SPACING ORDER NUMBER	none						
CLASS: Oil, Gas, Dry, Inj, Disp, Comm Disp, Svc	Oil						
PERFORATED INTERVALS	4140-4176						
ACID/VOLUME	2000 gallon						
FRACTURE TREATMENT (Fluids/Prop Amounts)	none						

Min Gas Allowable (165:10-17-7) Gas Purchaser/Measurer  
OR First Sales Date  
Oil Allowable (165:10-13-3)

## INITIAL TEST DATA

INITIAL TEST DATE	11/19/2019					
OIL-BBL/DAY	25					
OIL-GRAVITY ( API)	40					
GAS-MCF/DAY	0					
GAS-OIL RATIO CU FT/BBL						
WATER-BBL/DAY	250					
PUMPING OR FLOWING	pumping					
INITIAL SHUT-IN PRESSURE	450 lb					
CHOKE SIZE						
FLOW TUBING PRESSURE						

AS SUBMITTED

A record of the formations drilled through, and pertinent remarks are presented on the reverse. I declare that I have knowledge of the contents of this report and am authorized by my organization to make this report, which was prepared by me or under my supervision and direction, with the data and facts stated herein to be true, correct, and complete to the best of my knowledge and belief.

SIGNATURE mike murphy DATE 12/11/2019 PHONE NUMBER 405 463 3355  
P O Box 2104 oklahoma City OK 73156 mike@mmenergy.net  
ADDRESS CITY STATE ZIP EMAIL ADDRESS

PLEASE TYPE OR USE BLACK INK ONLY  
FORMATION RECORD

Give formation names and tops, if available, or descriptions and thickness of formations drilled through. Show intervals cored or drillstem tested.

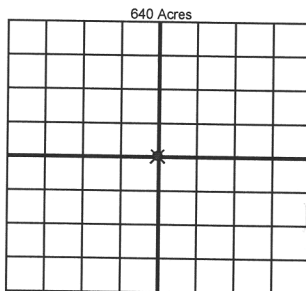
NAMES OF FORMATIONS	TOP
Oswego	4,140

LEASE NAME Kisner WELL NO. 55

FOR COMMISSION USE ONLY	
ITD on file	<input type="checkbox"/> YES <input type="checkbox"/> NO
APPROVED	DISAPPROVED
2) Reject Codes	

Were open hole logs run?	<input type="checkbox"/> yes <input checked="" type="checkbox"/> no
Date Last log was run	<u>6/30/2004</u>
Was CO <sub>2</sub> encountered?	<input type="checkbox"/> yes <input checked="" type="checkbox"/> no at what depths? <u></u>
Was H <sub>2</sub> S encountered?	<input type="checkbox"/> yes <input checked="" type="checkbox"/> no at what depths? <u></u>
Were unusual drilling circumstances encountered?	<input type="checkbox"/> yes <input checked="" type="checkbox"/> no
If yes, briefly explain below	

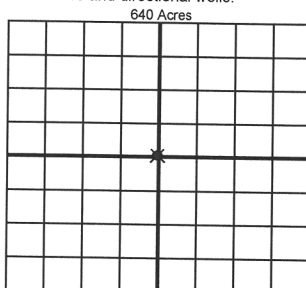
Other remarks: Squeezed Layton off with 40 sacks cement



If more than three drainholes are proposed, attach a separate sheet indicating the necessary information.

Direction must be stated in degrees azimuth. Please note, the horizontal drainhole and its end point must be located within the boundaries of the lease or spacing unit.

Directional surveys are required for all drainholes and directional wells.



BOTTOM HOLE LOCATION FOR DIRECTIONAL HOLE

SEC	TWP	RGE	COUNTY
Spot Location			
1/4	1/4	1/4	1/4
Measured Total Depth		True Vertical Depth	BHL From Lease, Unit, or Property Line:

BOTTOM HOLE LOCATION FOR HORIZONTAL HOLE: (LATERALS)

LATERAL #1			
SEC	TWP	RGE	COUNTY
Spot Location			
1/4	1/4	1/4	1/4
Depth of Deviation		Radius of Turn	Direction
Measured Total Depth		True Vertical Depth	Total Length
BHL From Lease, Unit, or Property Line:			

LATERAL #2			
SEC	TWP	RGE	COUNTY
Spot Location			
1/4	1/4	1/4	1/4
Depth of Deviation		Radius of Turn	Direction
Measured Total Depth		True Vertical Depth	Total Length
BHL From Lease, Unit, or Property Line:			

LATERAL #3			
SEC	TWP	RGE	COUNTY
Spot Location			
1/4	1/4	1/4	1/4
Depth of Deviation		Radius of Turn	Direction
Measured Total Depth		True Vertical Depth	Total Length
BHL From Lease, Unit, or Property Line:			