

Oklahoma Corporation Commission
Oil & Gas Conservation Division
Post Office Box 52000
Oklahoma City, Oklahoma 73152-2000
Rule 165: 10-3-25

Form 1002A

API No.: 35087221440001

Completion Report

Spud Date: December 04, 2018

OTC Prod. Unit No.: 087-225123-0-0000

Drilling Finished Date: January 18, 2019

1st Prod Date: February 23, 2019

Completion Date: February 23, 2019

Drill Type: HORIZONTAL HOLE

Min Gas Allowable: Yes

Well Name: NIGHTHAWK 0718 1H

Purchaser/Measurer: ENABLE GATHERING &
PROCESSING

Location: MCCLAIN 7 9N 4W
NW SE NE NW
890 FNL 2235 FWL of 1/4 SEC
Derrick Elevation: 0 Ground Elevation: 1354

First Sales Date: 02/23/2019

Operator: EOG RESOURCES INC 16231

3817 NW EXPRESSWAY STE 500
OKLAHOMA CITY, OK 73112-1483

Completion Type		Location Exception		Increased Density	
X	Single Zone	Order No		Order No	
	Multiple Zone	686044		There are no Increased Density records to display.	
	Commingled				

Casing and Cement							
Type	Size	Weight	Grade	Feet	PSI	SAX	Top of CMT
SURFACE	9 5/8	36	J-55	1213		555	SURFACE
PRODUCTION	5 1/2	20	P-110	20000		2862	8735

Liner								
Type	Size	Weight	Grade	Length	PSI	SAX	Top Depth	Bottom Depth
There are no Liner records to display.								

Total Depth: 20013

Packer		Plug	
Depth	Brand & Type	Depth	Plug Type
There are no Packer records to display.		There are no Plug records to display.	

Initial Test Data										
Test Date	Formation	Oil BBL/Day	Oil-Gravity (API)	Gas MCF/Day	Gas-Oil Ratio Cu FT/BBL	Water BBL/Day	Pumpin or Flowing	Initial Shut-In Pressure	Choke Size	Flow Tubing Pressure
Feb 28, 2019	WOODFORD	1677	40	2445	1458	4814	FLOWING	470	64	1245

Completion and Test Data by Producing Formation

Formation Name: WOODFORD

Code: 319WDFD

Class: OIL

Spacing Orders

Order No	Unit Size
632844	640
682713	640
686043	MULTIUNIT

Perforated Intervals

From	To
9664	19945

Acid Volumes

2,000 GALLONS TOTAL ACID

Fracture Treatments15,759,728 GALLONS TOTAL FLUID, 24,928,649
POUNDS TOTAL PROPPANT

Formation	Top
WOODFORD	9442

Were open hole logs run? No

Date last log run:

Were unusual drilling circumstances encountered? No

Explanation:

Other Remarks

WELL NAME CHANGED FROM THAT ON APPROVED PERMIT TO DRILL TO INCLUDE "0718" IN LEASE NAME RATHER THAN WELL NUMBER. OCC - THIS DOCUMENT IS ACCEPTED BASED ON THE DATA SUBMITTED NEITHER THE FINAL LOCATION EXCEPTION NOR THE FINAL MULTIUNIT ORDERS HAVE BEEN ISSUED.

Lateral Holes

Sec: 18 TWP: 9N RGE: 4W County: MCCLAIN

SE SW SW SW

176 FSL 394 FWL of 1/4 SEC

Depth of Deviation: 8933 Radius of Turn: 732 Direction: 174 Total Length: 10348

Measured Total Depth: 20013 True Vertical Depth: 9420 End Pt. Location From Release, Unit or Property Line: 176

FOR COMMISSION USE ONLY

1142363

Status: Accepted

RECEIVED

Form 1002A
Rev. 2009

MAR 19 2019

OKLAHOMA CORPORATION
COMMISSION

API NO. 087-22144
OTC PROD. UNIT NO. 087-225123

PLEASE TYPE OR USE BLACK INK ONLY
NOTE:

Attach copy of original 1002A
if recompletion or reentry.

OKLAHOMA CORPORATION COMMISSION
Oil & Gas Conservation Division
Post Office Box 52000
Oklahoma City, Oklahoma 73152-2000
Rule 165:10-3-25

☒ ORIGINAL
☐ AMENDED (Reason) _____

COMPLETION REPORT

TYPE OF DRILLING OPERATION

☐ STRAIGHT HOLE ☐ DIRECTIONAL HOLE ☒ HORIZONTAL HOLE
☐ SERVICE WELL

If directional or horizontal, see reverse for bottom hole location.

COUNTY	McClain	SEC	7	TWP	9N	RGE	4W	SPUD DATE	12/4/2018	
LEASE NAME	NIGHTHAWK 0718			WELL NO.	1H			DRLG FINISHED DATE	1/18/2019	
NW 1/4 SE 1/4 NE 1/4 NW 1/4	FNL 1/4 SEC 890			FWL OF 1/4 SEC	2235			DATE OF WELL COMPLETION	2/23/2019	
ELEVATION N Derrick	Ground	1354	Latitude (if known)			Longitude (if known)			1st PROD DATE	2/23/2019
OPERATOR NAME	EOG Resources, Inc.			OTC/OCC OPERATOR NO.	16231				RECOMP DATE	
ADDRESS	3817 NW Expressway, Suite 500									
CITY	Oklahoma City	STATE	OK	ZIP	73112					

640 Acres

LOCATE WELL

COMPLETION TYPE

☒ SINGLE ZONE
☐ MULTIPLE ZONE
Application Date _____
COMINGLED Application Date _____
LOCATION EXCEPTION ORDER INCREASED DENSITY ORDER NO. 686043, 686044

CASING & CEMENT (Form 1002C must be attached)

TYPE	SIZE	WEIGHT	GRADE	FEET	PSI	SAX	TOP OF CMT
CONDUCTOR							
SURFACE	9 5/8	36	J-55	1,213		555	SURFACE
INTERMEDIATE							
PRODUCTION *	5 1/2	20	P-110	20,000		2,862	8,735
LINER							
TOTAL DEPTH						20,013	

PACKER @ _____ BRAND & TYPE _____ PLUG @ _____ TYPE _____ PLUG @ _____ TYPE _____
PACKER @ _____ BRAND & TYPE _____ PLUG @ _____ TYPE _____ PLUG @ _____ TYPE _____

COMPLETION & TEST DATA BY PRODUCING FORMATION

FORMATION	WOODFORD						
SPACING & SPACING ORDER NUMBER	640/632844, 682713						
CLASS: Oil, Gas, Dry, Inj, Disp, Comm Disp, Svc	OIL						
PERFORATED INTERVALS	9,664 - 19,945						
ACID/VOLUME	TOTAL ACID - 2000 GALS						
FRACTURE TREATMENT (Fluids/Prop Amounts)	TOTAL FLUID - 15,759,728 GALS TOTAL PROP - 24,928,649 LBS						

☒ Min Gas Allowable (165:10-17-7)
OR
☐ Oil Allowable (165:10-13-3)

Gas Purchaser/Measurer
First Sales Date

Enable Gathering & Processing
2/23/2019

INITIAL TEST DATA

INITIAL TEST DATE	2/28/2019						
OIL-BBL/DAY	1,677						
OIL-GRAVITY (API)	40						
GAS-MCF/DAY	2,445						
GAS-OIL RATIO CU FT/BBL	1,458						
WATER-BBL/DAY	4,814						
PUMPING OR FLOWING	FLOWING						
INITIAL SHUT-IN PRESSURE	470						
CHOKE SIZE	64						
FLOW TUBING PRESSURE	1245						

AS SUBMITTED

A record of the formations drilled through, and pertinent remarks are presented on the reverse. I declare that I have knowledge of the contents of this report and am authorized by my organization to make this report, which was prepared by me or under my supervision and direction, with the data and facts stated herein to be true, correct, and complete to the best of my knowledge and belief.

Joni Reeder Joni Reeder 3/19/19 405-246-3100
SIGNATURE NAME (PRINT OR TYPE) DATE PHONE NUMBER
3817 NW Expressway, Suite 500 Oklahoma City OK 73112 joni_reeder@eogresources.com
ADDRESS CITY STATE ZIP EMAIL ADDRESS

PLEASE TYPE OR USE BLACK INK ONLY
FORMATION RECORD

Give formation names and tops, if available, or descriptions and thickness of formations drilled through. Show intervals cored or drillstem tested.

LEASE NAME NIGHTHAWK 0718 WELL NO. 1H

NAMES OF FORMATIONS	TOP
WOODFORD MD	9,442

FOR COMMISSION USE ONLY	
ITD on file <input type="checkbox"/> YES <input type="checkbox"/> NO	
APPROVED _____	DISAPPROVED _____
2) Reject Codes	

Were open hole logs run?	yes	<input checked="" type="checkbox"/> no
Date Last log was run	N/A	
Was CO ₂ encountered?	yes	<input checked="" type="checkbox"/> no at what depths? _____
Was H ₂ S encountered?	yes	<input checked="" type="checkbox"/> no at what depths? _____
Were unusual drilling circumstances encountered?	yes	<input checked="" type="checkbox"/> no
If yes, briefly explain below:		

Other remarks: **NAME CHANGED FROM THAT ON APPROVED PERMIT TO DRILL TO INCLUDE "0718" IN LEASE NAME RATHER THAN WELL NO.**

640 Acres

If more than three drainholes are proposed, attach a separate sheet indicating the necessary information.

Direction must be stated in degrees azimuth.
Please note, the horizontal drainhole and its end point must be located within the boundaries of the lease or spacing unit.

Directional surveys are required for all drainholes and directional wells.

640 Acres

BOTTOM HOLE LOCATION FOR DIRECTIONAL HOLE

SEC	TWP	RGE	COUNTY
Spot Location		Feet From 1/4 Sec Lines	FSL
1/4	1/4	1/4	1/4
Measured Total Depth	True Vertical Depth	BHL From Lease, Unit, or Property Line:	

BOTTOM HOLE LOCATION FOR HORIZONTAL HOLE: (LATERALS)

LATERAL #1

SEC	18	TWP	9N	RGE	4W	COUNTY	McClain
Spot Location		SE	SW	SW	SW	Feet From 1/4 Sec Lines	FSL
1/4	1/4	1/4	1/4	1/4	1/4	176	FWL
Depth of Deviation	8,933	Radius of Turn	732	Direction	174	Total Length	10,348
Measured Total Depth	20,013	True Vertical Depth	9,420	BHL From Lease, Unit, or Property Line: 176			

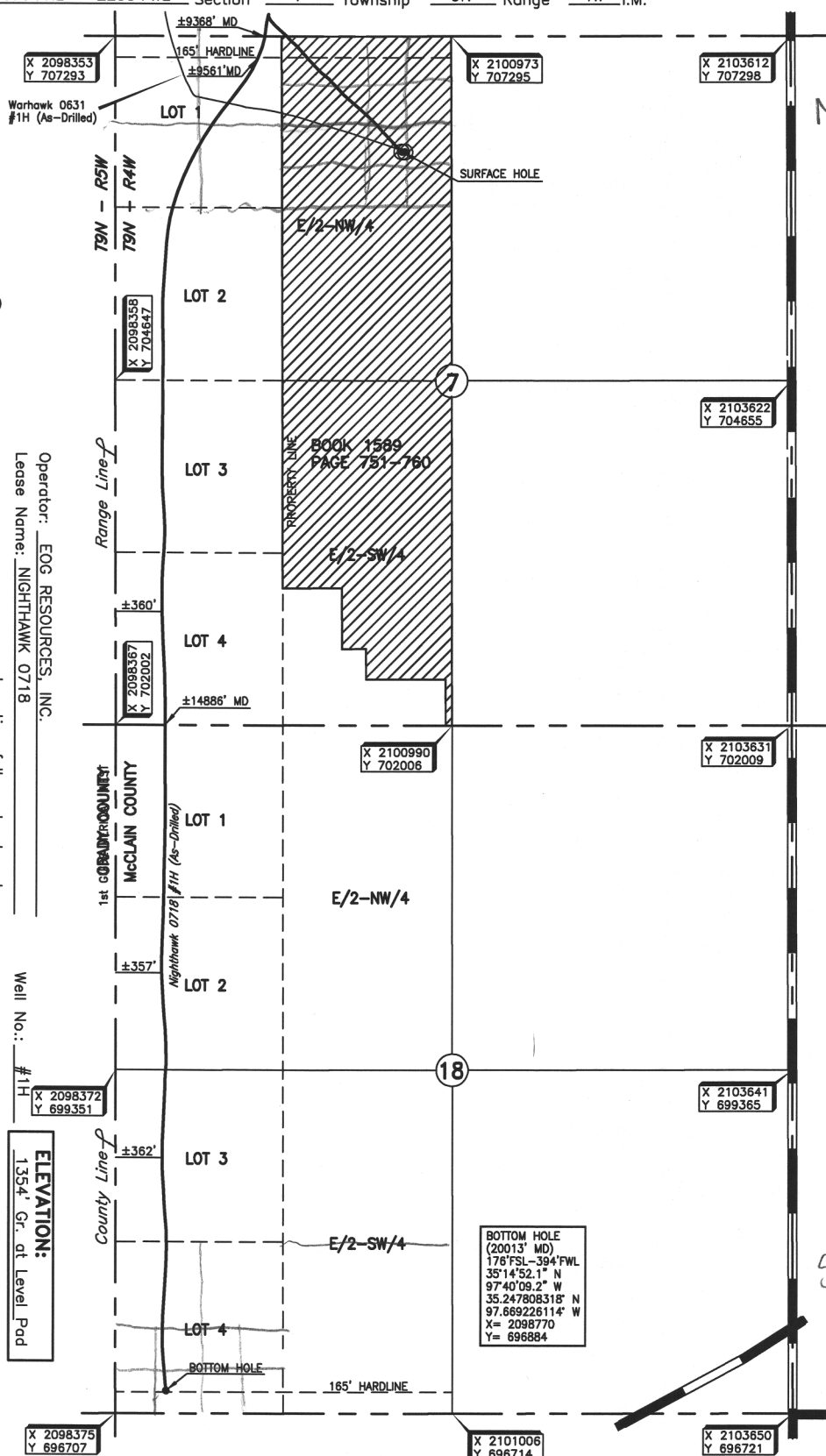
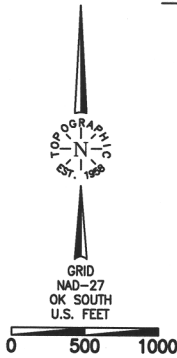
LATERAL #2

SEC	TWP	RGE	COUNTY
Spot Location		Feet From 1/4 Sec Lines	FSL
1/4	1/4	1/4	1/4
Depth of Deviation	Radius of Turn	Direction	Total Length
Measured Total Depth	True Vertical Depth	BHL From Lease, Unit, or Property Line:	

LATERAL #3

SEC	TWP	RGE	COUNTY
Spot Location		Feet From 1/4 Sec Lines	FSL
1/4	1/4	1/4	1/4
Depth of Deviation	Radius of Turn	Direction	Total Length
Measured Total Depth	True Vertical Depth	BHL From Lease, Unit, or Property Line:	

890' FNL - 2235' FWL Section 7 Township 9N Range 4W I.M.



Operator: EOG RESOURCES, INC.
 Lease Name: NIGHTHAWK 0718
 Topography & Vegetation Location fell on level pad.
 Good Drill Site? Yes
 Reference Stakes or Alternate Location
 Stakes Set None
 Best Accessibility to Location From North off county road
 Distance & Direction From the jct. of St. Hwy. 76 and St. Hwy. 37, go 1 mile South on St. Hwy. 76, then 1 mile West to the NW corner of Section 7, T9N - R4W.

Well No.: #1H
 ELEVATION: 1354' Gr. of Level Pad

DATUM: NAD-27
 LAT: 35°16'26.2"N
 LONG: 97°39'46.9"W
 LAT: 35.273949710°N
 LONG: 97.663025565°W
 STATE PLANE
 COORDINATES: (US Feet)
 ZONE: OK SOUTH
 X: 2100589
 Y: 706405

Invoice # 304725 Date of Drawing: Jan. 15, 2019
 Date Staked: Oct. 10, 2018 JP

FINAL AS-DRILLED PLAT

AS-DRILLED INFORMATION
 FURNISHED BY EOG RESOURCES, INC.