

Oklahoma Corporation Commission
Oil & Gas Conservation Division
Post Office Box 52000
Oklahoma City, Oklahoma 73152-2000
Rule 165: 10-3-25

Form 1002A

API No.: 35101229380001

Completion Report

Spud Date: November 18, 2018

OTC Prod. Unit No.:

Drilling Finished Date: December 01, 2018

1st Prod Date: January 19, 2019

Completion Date: January 22, 2019

Drill Type: STRAIGHT HOLE

Well Name: BIG D 29-6A

Purchaser/Measurer:

Location: MUSKOGEE 29 15N 15E
S2 NE SE NW
860 FSL 2310 FWL of 1/4 SEC
Derrick Elevation: 660 Ground Elevation: 660

First Sales Date:

Operator: J & J PRODUCTION COMPANY LLC 4183
PO BOX 561
376060 E 1130 RD
OKEMAH, OK 74859-0561

Completion Type		Location Exception		Increased Density	
X	Single Zone	Order No		Order No	
	Multiple Zone	There are no Location Exception records to display.		There are no Increased Density records to display.	
	Commingled				

Casing and Cement								
Type		Size	Weight	Grade	Feet	PSI	SAX	Top of CMT
SURFACE		7	21	J-55	157		38	SURFACE
PRODUCTION		4.5	11.6	J-55	2272		215	SURFACE

Liner								
Type	Size	Weight	Grade	Length	PSI	SAX	Top Depth	Bottom Depth
There are no Liner records to display.								

Total Depth: 2750

Packer		Plug	
Depth	Brand & Type	Depth	Plug Type
There are no Packer records to display.		There are no Plug records to display.	

Initial Test Data										
Test Date	Formation	Oil BBL/Day	Oil-Gravity (API)	Gas MCF/Day	Gas-Oil Ratio Cu FT/BBL	Water BBL/Day	Pumpin or Flowing	Initial Shut-In Pressure	Choke Size	Flow Tubing Pressure
Jan 19, 2019	GILCREASE	17		60	3529	10	SWAB	265		

Completion and Test Data by Producing Formation

Formation Name: GILCREASE

Code: 403GLCR

Class: OIL

Spacing Orders**Order No****Unit Size**

There are no Spacing Order records to display.

Perforated Intervals**From****To**

1710

1715

Acid Volumes

400 GALLONS 10% NEFE

Fracture Treatments

12,500 POUNDS 20/40 SAND, 101 GALLONS PLEXGEL 907, 150 POUNDS FL70, 7 GALLONS BREAKER 10L, 2 GALLONS PLEXCIDE P5, 27 GALLONS KCL, 14 GALLONS LCA, D-10, NE-3, (FRAC - 290 4% KCL, FLUSH - 25 4% KCL)

Formation	Top
GILCREASE	1430
WOODFORD	2110
VIOLA	2150
WILCOX	2180
ARBUCKLE	2489

Were open hole logs run? Yes

Date last log run: December 26, 2018

Were unusual drilling circumstances encountered? No

Explanation:

Other Remarks

There are no Other Remarks.

FOR COMMISSION USE ONLY

1142358

Status: Accepted

API NO. 101-229384
OTC PROD.
UNIT NO.

(PLEASE TYPE OR USE BLACK INK ONLY)

OKLAHOMA CORPORATION COMMISSION

Oil & Gas Conservation Division

Post Office Box 52000

Oklahoma City, Oklahoma 73152-2000

Rule 165:10-3-25

RECEIVED

MAR 14 2019

Form 1002A

Rev. 2009

Oklahoma Corporation
Commission

☒ ORIGINAL
☐ AMENDED (Reason)

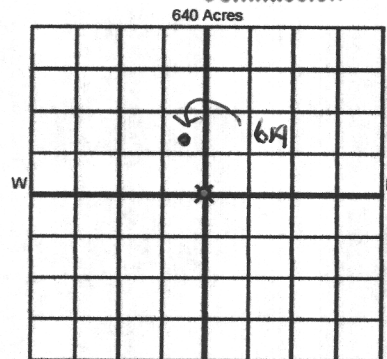
COMPLETION REPORT

TYPE OF DRILLING OPERATION

☒ STRAIGHT HOLE ☐ DIRECTIONAL HOLE ☐ HORIZONTAL HOLE
☐ SERVICE WELL

If directional or horizontal, see reverse for bottom hole location.

COUNTY MUSKOGEE SEC 29 TWP 15N RGE 15E
LEASE NAME Big D
WELL NO. 29-6A
DATE OF WELL COMPLETION 1-22-19
1st PROD DATE 1-19-19
RECOMP DATE
ELEVATION 660 Ground 660 FSL OF 1/4 SEC 860' FWL OF 1/4 SEC 2150'
Latitude (if known) 2310 Longitude (if known)
OPERATOR NAME J&J Production Co., LLC OTC / OCC OPERATOR NO. 04183
ADDRESS P.O. Box 561
CITY OKEMAH STATE OK ZIP 74859



COMPLETION TYPE

☒ SINGLE ZONE
☐ MULTIPLE ZONE
Application Date
COMINGLED
Application Date
LOCATION EXCEPTION
ORDER NO.
INCREASED DENSITY
ORDER NO.

CASING & CEMENT (Attach Form 1002C)

TYPE	SIZE	WEIGHT	GRADE	FEET	PSI	SAX	TOP OF CMT
CONDUCTOR							
SURFACE	7"	21#	J-55	157		38	SURFACE
INTERMEDIATE							
PRODUCTION	4.5"	11.6#	J-55	2272		215	SURFACE
LINER							

PACKER @ BRAND & TYPE PLUG @ TYPE PLUG @ TYPE
PACKER @ BRAND & TYPE PLUG @ TYPE PLUG @ TYPE

TOTAL DEPTH 2750'

COMPLETION & TEST DATA BY PRODUCING FORMATION

FORMATION Gilcrease
SPACING & SPACING
ORDER NUMBER
CLASS: Oil, Gas, Dry, Inj, Disp, Comm Disp, Svc
PERFORATED INTERVALS
ACID/VOLUME 460gal / 10% NEFE
FRACTURE TREATMENT (Fluids/Prop Amounts)
12,500# 20/40 SAND (Submitted To Frac Focus)
101gal Plexgel 907, 150 lb FL70 (frac-290% Kcl)
79gal Breaker 10L, 29gal Plexicide 5 (flush-25 4% Kcl)
279gal KCl, 149gal CCA, D-10, NE-3

Min Gas Allowable (165:10-17-7)

Gas Purchaser/Measurer

INITIAL TEST DATA

Oil Allowable (165:10-13-3)

First Sales Date

INITIAL TEST DATE 1-19-19
OIL-BBL/DAY 17 bbl
OIL-GRAVITY (API)
GAS-MCF/DAY 60 mcf
GAS-OIL RATIO CU FT/BBL 3529
WATER-BBL/DAY 10 bbl
PUMPING OR FLOWING SWAB
INITIAL SHUT-IN PRESSURE 265#
CHOKE SIZE
FLOW TUBING PRESSURE

AS SUBMITTED

A record of the formations drilled through, and pertinent remarks are presented on the reverse. I declare that I have knowledge of the contents of this report and am authorized by my organization to make this report, which was prepared by me or under my supervision and direction, with the data and facts stated herein to be true, correct, and complete to the best of my knowledge and belief.

SIGNATURE John Luckett
ADDRESS P.O. Box 561
CITY OKEMAH STATE OK ZIP 74859
DATE 3-8-19
PHONE NUMBER 918-623-6363
EMAIL ADDRESS johneluckett@yahoo.com

PLEASE TYPE OR USE BLACK INK ONLY
FORMATION RECORD

Give formation names and tops, if available, or descriptions and thickness of formations drilled through. Show intervals cored or drillstem tested.

NAMES OF FORMATIONS	TOP
GILCREASE	1430
WOODFORD	2110
VIOLEA	2150
WILCOX	2180
ARBuckle	2489

LEASE NAME

Big D

WELL NO.

29-6A

FOR COMMISSION USE ONLY

ITD on file

☐ YES

☐ NO

APPROVED

DISAPPROVED

2) Reject Codes

Were open hole logs run?

☒ yes ☐ no

Date Last log was run

12-26-18 bond log

Was CO₂ encountered?

☐ yes ☒ no

at what depths?

Was H₂S encountered?

☐ yes ☒ no

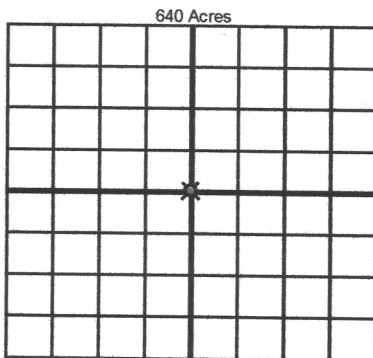
at what depths?

Were unusual drilling circumstances encountered?

☐ yes ☒ no

If yes, briefly explain below

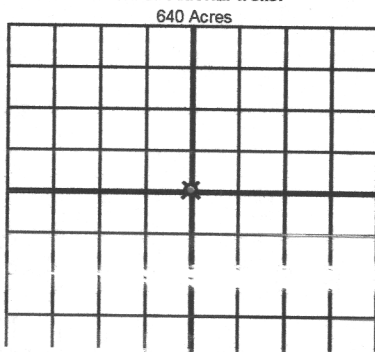
Other remarks:



If more than three drainholes are proposed, attach a separate sheet indicating the necessary information.

Direction must be stated in degrees azimuth. Please note, the horizontal drainhole and its end point must be located within the boundaries of the lease or spacing unit.

Directional surveys are required for all drainholes and directional wells.



BOTTOM HOLE LOCATION FOR DIRECTIONAL HOLE

SEC	TWP	RGE	COUNTY
Spot Location		Feet From 1/4 Sec Lines	FSL
1/4	1/4	1/4	1/4
Measured Total Depth	True Vertical Depth	BHL From Lease, Unit, or Property Line:	

BOTTOM HOLE LOCATION FOR HORIZONTAL HOLE: (LATERALS)

SEC	TWP	RGE	COUNTY
Spot Location		Feet From 1/4 Sec Lines	FSL
1/4	1/4	1/4	1/4
Depth of Deviation	Radius of Turn	Direction	Total Length
Measured Total Depth	True Vertical Depth	BHL From Lease, Unit, or Property Line:	

SEC	TWP	RGE	COUNTY
Spot Location		Feet From 1/4 Sec Lines	FSL
1/4	1/4	1/4	1/4
Depth of Deviation	Radius of Turn	Direction	Total Length
Measured Total Depth	True Vertical Depth	BHL From Lease, Unit, or Property Line:	

SEC	TWP	RGE	COUNTY
Spot Location		Feet From 1/4 Sec Lines	FSL
1/4	1/4	1/4	1/4
Depth of Deviation	Radius of Turn	Direction	Total Length
Measured Total Depth	True Vertical Depth	BHL From Lease, Unit, or Property Line:	