

Oklahoma Corporation Commission
Oil & Gas Conservation Division
Post Office Box 52000
Oklahoma City, Oklahoma 73152-2000
Rule 165: 10-3-25

Form 1002A

API No.: 35045237010000

Completion Report

Spud Date: June 30, 2018

OTC Prod. Unit No.: 045-224996

Drilling Finished Date: November 28, 2018

1st Prod Date: January 18, 2019

Completion Date: January 18, 2019

Drill Type: HORIZONTAL HOLE

Min Gas Allowable: Yes

Well Name: GROSS 16 3H

Purchaser/Measurer: DCP MIDSTREAM

Location: ELLIS 9 17N 24W
SW SE SE SW
250 FSL 2150 FWL of 1/4 SEC
Derrick Elevation: 0 Ground Elevation: 2274

First Sales Date: 01/18/2019

Operator: EOG RESOURCES INC 16231

3817 NW EXPRESSWAY STE 500
OKLAHOMA CITY, OK 73112-1483

Completion Type	
X	Single Zone
	Multiple Zone
	Commingled

Location Exception	
Order No	
666004	
678968	

Increased Density	
Order No	
666120	
678967	

Casing and Cement							
Type	Size	Weight	Grade	Feet	PSI	SAX	Top of CMT
SURFACE	9 5/8	36	J-55	1051		555	SURFACE
PRODUCTION	7	29	P-110	8791		445	1629

Liner								
Type	Size	Weight	Grade	Length	PSI	SAX	Top Depth	Bottom Depth
LINER	4 1/2	11.6	P-110	6580	0	490	8491	15071

Total Depth: 15071

Packer	
Depth	Brand & Type
There are no Packer records to display.	

Plug	
Depth	Plug Type
There are no Plug records to display.	

Initial Test Data										
Test Date	Formation	Oil BBL/Day	Oil-Gravity (API)	Gas MCF/Day	Gas-Oil Ratio Cu FT/BBL	Water BBL/Day	Pumpin or Flowing	Initial Shut-In Pressure	Choke Size	Flow Tubing Pressure
Jan 22, 2019	MARMATON	182	43	307	1687	756	FLOWING	1150	64	1112

Completion and Test Data by Producing Formation			
Formation Name: MARMATON		Code: 404MRMN	Class: OIL
Spacing Orders		Perforated Intervals	
Order No	Unit Size	From	To
594259	640	9941	15037
Acid Volumes		Fracture Treatments	
22,000 GALLONS TOTAL ACID		5,290,663 GALLONS TOTAL FLUID, 6,148,000 POUNDS TOTAL PROPPANT	

Formation	Top
MARMATON	9755

Were open hole logs run? No
Date last log run:

Were unusual drilling circumstances encountered? Yes
Explanation: DRILLED TO 14,210. TRIPPED DUE TO LOST DIFFERENTIAL PRESSURE. LOST BIT IN HOLE. WHEN ATTEMPTING TO TRIP BACK IN HOLE , HIT BRIDGE AT 9713'. ATTEMPTED TO CLEAN OUT NO SUCCESS. SET CEMENT PLUGS FROM 9500' TO 8650'. DRILLED TO 9300' ATTEMPTING TO SIDETRACK OFF PLUG. UNABLE TO SIDETRACK OFF PLUG. SET CEMENT PLUG FROM 9290 TO 8719'. KICKED OFF CEMENT PLUG AND DRILLED CURVE AND LATERAL TO TD.

Other Remarks
WELL NAME CHANGED FROM THAT ON APPROVED PERMIT TO DRILL TO INCLUDE "16" IN LEASE NAME RATHER THAN WELL NUMBER. OCC - THIS DOCUMENT IS ACCEPTED BASED ON THE DATA SUBMITTED THE FINAL LOCATION EXCEPTION HAS NOT BEEN SUBMITTED. IT APPEARS THE WELL'S COMPLETION INTERVAL VIOLATED THE INTERIM ORDER AS TO BEING TO CLOSE TO THE EAST BOUNDARY. THIS WILL BE DEALT WITH IN THE FINAL LOCATION EXCEPTION HEARING.

Lateral Holes
Sec: 16 TWP: 17N RGE: 24W County: ELLIS SE NW SW SE 864 FSL 2004 FEL of 1/4 SEC Depth of Deviation: 8825 Radius of Turn: 1493 Direction: 174 Total Length: 3832 Measured Total Depth: 14150 True Vertical Depth: 9669 End Pt. Location From Release, Unit or Property Line: 864
Sec: 16 TWP: 17N RGE: 24W County: ELLIS SW SE SW SE 177 FSL 1803 FEL of 1/4 SEC Depth of Deviation: 8825 Radius of Turn: 1214 Direction: 171 Total Length: 5032 Measured Total Depth: 15071 True Vertical Depth: 9685 End Pt. Location From Release, Unit or Property Line: 177

FOR COMMISSION USE ONLY

	1142329
--	---------

PLEASE TYPE OR USE BLACK INK ONLY

FORMATION RECORD

Give formation names and tops, if available, or descriptions and thickness of formations drilled through. Show intervals cored or drillstem tested.

NAMES OF FORMATIONS	TOP
MARMATON MD	9,755

LEASE NAME _____

WELL NO. _____

FOR COMMISSION USE ONLY

ITD on file ☐ YES ☐ NO

APPROVED _____ DISAPPROVED _____

2) Reject Codes

Were open hole logs run? _____ yes ☒ no

Date Last log was run _____ N/A

Was CO₂ encountered? _____ yes ☒ no at what depths? _____Was H₂S encountered? _____ yes ☒ no at what depths? _____Were unusual drilling circumstances encountered? _____ yes ☒ no

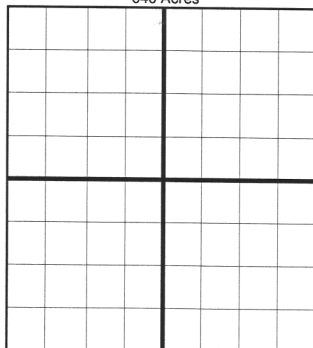
If yes, briefly explain below:

Other remarks:

NAME CHANGED FROM THAT ON APPROVED PERMIT TO DRILL TO INCLUDE "16" IN LEASE NAME RATHER THAN WELL NO.

Drilled to 14,210'. Tripped due to lost differential pressure. Lost bit in hole. When attempting to trip back in, hit bridge at 9,713'. Attempted to clean out with no success. Set cement plugs from 9,500' to 8,650'. Drilled to 9,300' attempting to sidetrack off plug. Unable to sidetrack off plug. Set cement plug from 9,290' to 8,719'. Kicked off of cement plug and drilled curve and lateral to TD.

640 Acres



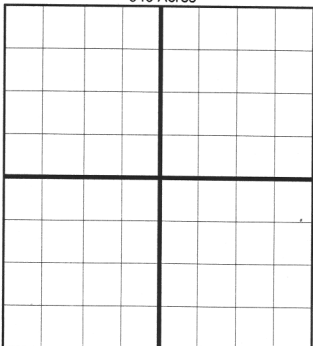
If more than three drainholes are proposed, attach a separate sheet indicating the necessary information.

Direction must be stated in degrees azimuth.

Please note, the horizontal drainhole and its end point must be located within the boundaries of the lease or spacing unit.

Directional surveys are required for all drainholes and directional wells.

640 Acres



BOTTOM HOLE LOCATION FOR DIRECTIONAL HOLE

SEC	TWP	RGE	COUNTY
Spot Location	1/4	1/4	1/4
Measured Total Depth	True Vertical Depth	BHL From Lease, Unit, or Property Line:	

BOTTOM HOLE LOCATION FOR HORIZONTAL HOLE: (LATERALS)

LATERAL 1 ORIGINAL HOLE

SEC	TWP	RGE	COUNTY
16	17N	24W	Ellis
Spot Location	SE 1/4	NW 1/4	SW 1/4
Depth of Deviation	8,825	Radius of Turn	1,493
Measured Total Depth	14,150	True Vertical Depth	9,669
Feet From 1/4 Sec Lines	FSL 864	Direction	174
Total Length	3,832	BHL From Lease, Unit, or Property Line:	864

LATERAL 2 SIDETRACK HOLE

SEC	TWP	RGE	COUNTY
16	17N	24W	ELLIS
Spot Location	SW 1/4	SE 1/4	SW 1/4
Depth of Deviation	8,825	Radius of Turn	1,214
Measured Total Depth	15,071	True Vertical Depth	9,685
Feet From 1/4 Sec Lines	FSL 177	Direction	171
Total Length	5,032	BHL From Lease, Unit, or Property Line:	177

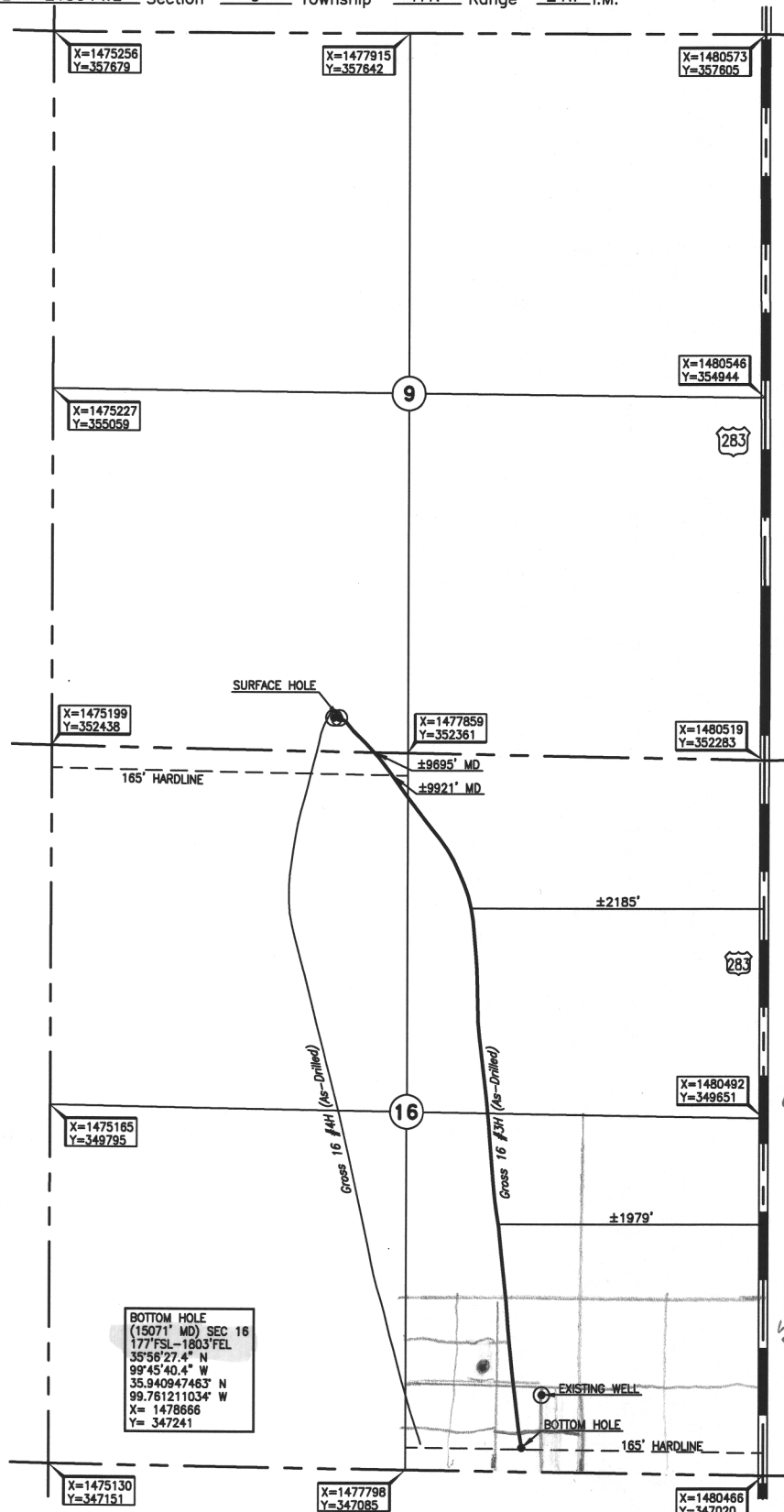
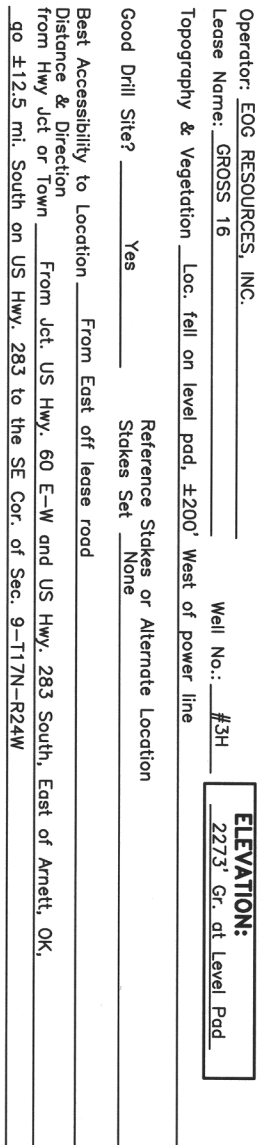
LATERAL #3

SEC	TWP	RGE	COUNTY
Spot Location	1/4	1/4	1/4
Depth of Deviation	Radius of Turn	Direction	Total Length
Measured Total Depth	True Vertical Depth	BHL From Lease, Unit, or Property Line:	

13800 WIRELESS WAY, OKLA. CITY, OKLA. 73134 * LOCAL (405) 843-4847 * OUT OF STATE (800) 654-3219
Certificate of Authorization No. 1293 LS

ELLIS County, Oklahoma

250' FSL - 2150' FWL Section 9 Township 17N Range 24W I.M.



OH
2004
964
Sec. 16
FEL
FSL
SE NW SW SE

ST 1 hole
SW SE SW SE

DATUM: NAD-27
LAT: 35°57'20.4" N
LONG: 99°45'57.5" W
LAT: 35.955670759° N
LONG: 99.765983876° W

STATE PLANE COORDINATES: (US Feet)

ZONE: OK NORTH

X: 1477350
Y: 352625

Invoice # 304911 Date of Drawing: Dec. 12, 2018
Date Staked: Oct. 17, 2018 JP

FINAL AS-DRILLED PLAT

AS-DRILLED INFORMATION
FURNISHED BY EOG RESOURCES, INC.