

Oklahoma Corporation Commission
Oil & Gas Conservation Division
Post Office Box 52000
Oklahoma City, Oklahoma 73152-2000
Rule 165: 10-3-25

Form 1002A

API No.: 35137021960002

Completion Report

Spud Date: May 26, 1950

OTC Prod. Unit No.:

Drilling Finished Date: June 10, 1950

Amended

1st Prod Date: June 17, 1950

Amend Reason: REPAIR HOLE IN CASING / PUT BACK ON INJECTION

Completion Date: June 28, 1950

Recomplete Date: December 04, 2021

Drill Type: STRAIGHT HOLE

SERVICE WELL

Well Name: SHOLEM ALECHEM FAULT BLOCK A (CALMES A-9) 54

Purchaser/Measurer:

Location: STEPHENS 2 1S 4W
NE SE NW NE
1720 FSL 1060 FWL of 1/4 SEC
Latitude: 34.50454 Longitude: -97.58511
Derrick Elevation: 1069 Ground Elevation: 0

First Sales Date:

Operator: CITATION OIL & GAS CORPORATION 14156

14077 CUTTEN RD
HOUSTON, TX 77069-2212

Completion Type		Location Exception		Increased Density	
X	Single Zone	Order No		Order No	
	Multiple Zone	There are no Location Exception records to display.		There are no Increased Density records to display.	
	Commingled				

Casing and Cement							
Type	Size	Weight	Grade	Feet	PSI	SAX	Top of CMT
SURFACE	10 3/4	40.5	L.W.	313		325	SURFACE
PRODUCTION	5 1/2	20 & 17	J-55	5180		1000	2050

Liner								
Type	Size	Weight	Grade	Length	PSI	SAX	Top Depth	Bottom Depth
There are no Liner records to display.								

Total Depth: 5210

Packer		Plug	
Depth	Brand & Type	Depth	Plug Type
4845	ASIX	There are no Plug records to display.	

Initial Test Data

Test Date	Formation	Oil BBL/Day	Oil-Gravity (API)	Gas MCF/Day	Gas-Oil Ratio Cu FT/BBL	Water BBL/Day	Pumpin or Flowing	Initial Shut- In Pressure	Choke Size	Flow Tubing Pressure
-----------	-----------	----------------	----------------------	----------------	----------------------------	------------------	----------------------	---------------------------------	---------------	-------------------------

There are no Initial Data records to display.

Completion and Test Data by Producing Formation

Formation Name: SIMS-SPRINGER Code: 401SMSPR Class: INJ

Spacing Orders		Perforated Intervals	
Order No	Unit Size	From	To
There are no Spacing Order records to display.		4876	4910
		4924	4944
		4960	5012
		5020	5090
		5096	5102
		5134	5148
Acid Volumes		Fracture Treatments	
NONE		NONE	

Formation	Top
SIMS-SPRINGER	4876

Were open hole logs run? No
Date last log run:

Were unusual drilling circumstances encountered? No
Explanation:

Other Remarks
HOLE IN CASING DETECTED @ SQUEEZE HOLES FROM 1,999' - 2,031', RETAINER @ 1,915'. REPAIR HOLE IN CASING WITH CEMENT SQUEEZE JOB, MIX AND PUMP 150 SACKS CLASS A CEMENT WITH 0.4% C-15, @ % CC AND 5 PPS KOLSEAL. PRESSURE CASING TO 300#. PRESSURE TO 400# AT TAIL CEMENT. DISPLACED WITH 10.5 BFW. PRESSURE INCREASED TO 1,000# STRING OUT RETAINED, PUH 1 JT 2 7/8 N-80 TUBING. BACK WASH TUBING WITH 33 BFW. RDMO TOOH WITH 16' X 2 7/8 N-80 TS AND 55 JTS N-80 TUBING. PRESS CASING TO 300#. TAG CEMENT @ 1,870'. TESTED CASING GOOD TEST. SET PACKER @ 4,845'. OCC MIKE WILLARD APPROVED, NOT ON LOCATION.

FOR COMMISSION USE ONLY
<div>Status: Accepted</div> <div>1147368</div>

API NO. 35-137-02196
OTC PROD. 437-023964
UNIT NO.

Oil and Gas Conservation Division
P.O. Box 52000
Oklahoma City, OK 73152-2000
405-521-2331
OCCentralProcessing@OCC.OK.GOV



OKLAHOMA
Corporation
Commission

Form 1002A
Rev. 2021

ORIGINAL
AMENDED (Reason) Repair hole in Casing, put back on injection

Rule 165:10-3-25

COMPLETION REPORT

TYPE OF DRILLING OPERATION

☒ STRAIGHT HOLE ☐ DIRECTIONAL HOLE ☐ HORIZONTAL HOLE
☒ SERVICE WELL

If directional or horizontal, see reverse for bottom hole location.

COUNTY Stephens SEC. 2 TWP 1S RGE 4W

LEASE NAME Sholem Alechem Flt Blk A

NE 1/4 SE 1/4 NW 1/4 NE 1/4 FUL 4360 FUL 3700

ELEVATION 1069 Ground Latitude 34.50454

OPERATOR NAME Citation Oil and Gas Corp

ADDRESS 14077 Cutten Road

CITY Houston STATE TX ZIP 77069

SPUD DATE 5/26/50

DRLG FINISHED DATE 6/10/50

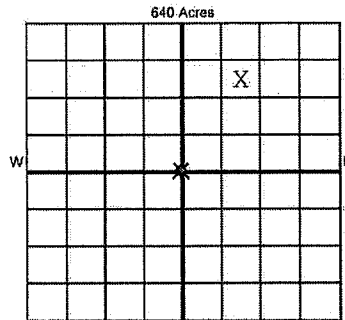
DATE OF WELL COMPLETION 6/28/50

1st PROD DATE 6/17/50

RECOMP DATE 12/4/21

Longitude -97.58511

OTC/OCC OPERATOR NO. 14156



COMPLETION TYPE

☒ SINGLE ZONE
☐ MULTIPLE ZONE
☐ COMMINGLED
☐ LOCATION EXCEPTION
☐ MULTIUNIT ORDER NO.
☐ INCREASED DENSITY
☐ ORDER NO.

CASING & CEMENT (Attach Form 1002C)

TYPE	SIZE	WEIGHT	GRADE	FEET	PSI	SAX	TOP OF CMT
CONDUCTOR							
SURFACE	10 3/4	40.5#	L.W.	313		325	Surface
INTERMEDIATE							
PRODUCTION	5 1/2	20#	J55	5180		1000	2050
LINER		17#					

PACKER @ 4845 BRAND & TYPE ASIX PLUG @ TYPE PLUG @ TYPE TOTAL DEPTH 5210

COMPLETION & TEST DATA BY PRODUCING FORMATION 4015MSPR

FORMATION	Gims - Springer-Sims					No Floc
SPACING & SPACING ORDER NUMBER	10 acre					
CLASS: Oil, Gas, Dry, Inj, Disp, Comm Disp, Svc	Inj					
PERFORATED INTERVALS	4876-4910, 4924-4944 4960-5012, 5020-5090 5096-5102, 5134-5148					
ACID/VOLUME	none					
FRACTURE TREATMENT (Fluids/Prop Amounts)	none					

Min Gas Allowable (165:10-17-7)

OR

Oil Allowable (165:10-13-3)

Purchaser/Measurer

First Sales Date

INITIAL TEST DATA

INITIAL TEST DATE	4/27/2021					
OIL-BBL/DAY	0					
OIL-GRAVITY (API)	N/A					
GAS-MCF/DAY						
GAS-OIL RATIO CU FT/BBL						
WATER-BBL/DAY	1204					
PUMPING OR FLOWING	Pumping					
INITIAL SHUT-IN PRESSURE						
CHOKE SIZE						
FLOW TUBING PRESSURE	Casing-pressure 600#					

A record of the formations drilled through, and pertinent remarks are presented on the reverse. I declare that I have knowledge of the contents of this report and am authorized by my organization to make this report, which was prepared by me or under my supervision and direction, with the data and facts stated herein to be true, correct, and complete to the best of my knowledge and belief.

Kelly Vasquez
SIGNATURE

14077 Cutten Road

ADDRESS

Houston

CITY

Kelly Vasquez
NAME (PRINT OR TYPE)

TX 77069

STATE ZIP

12/14/2021

DATE PHONE NUMBER

kvasquez@cogc.com

EMAIL ADDRESS

PLEASE TYPE OR USE BLACK INK ONLY
FORMATION RECORD

Give formation names and tops, if available, or descriptions and thickness of formations drilled through. Show intervals cored or drillstem tested.

LEASE NAME Sholem Alechem Flt Blk A

WELL NO. 54

NAMES OF FORMATIONS	TOP
Springer-Sims	4876

FOR COMMISSION USE ONLY

ITD on file ☐ YES ☐ NO

APPROVED _____ DISAPPROVED _____

2) Reject Codes

Were open hole logs run? ☐ yes ☒ no

Date Last log was run _____

Was CO₂ encountered? ☐ yes ☒ no at what depths? _____

Was H₂S encountered? ☐ yes ☒ no at what depths? _____

Were unusual drilling circumstances encountered? ☐ yes ☒ no

If yes, briefly explain below _____

Other remarks: Hole in casing detected @ SQUEEZE holes from 1999-2031, RETAINER @ 1915

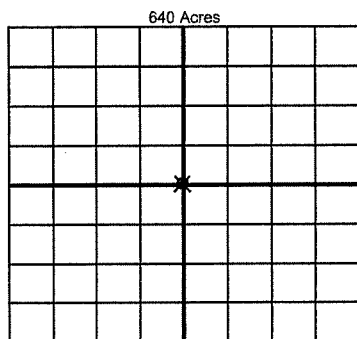
Repair hole in casing with cement squeeze job, Mix and pump 150 sxs Class A Cement W/0.4% C-15, @% CC& 5 pps Kolseal. Pressure casing to 300#

Pressure to 400# at tail cement. Displaced W 10.5 BFW. Pressure increased to 1000#

string out retainer, PUH 1 jt 2 7/8 N-80 tubing. Back wash tubing W 33 BFW. RDMO TOO H w16' X2 7/8

N-80 TS & 58 Jts N-80 tubing. Press Casing to 300#. Tag Cement @ 1870'. Tested casing good test. Set packer @ 4845'

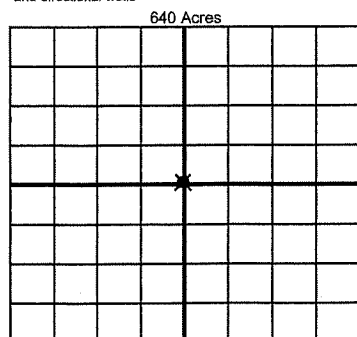
OCC Mike Willard approved, not on location.



If more than three drainholes are proposed, attach a separate sheet indicating the necessary information.

Direction must be stated in degrees azimuth. Please note, the horizontal drainhole and its end point must be located within the boundaries of the lease or spacing unit.

Directional surveys are required for all drainholes and directional wells



BOTTOM HOLE LOCATION FOR DIRECTIONAL HOLE

SEC	TWP	RGE	COUNTY
1/4	1/4	1/4	1/4
Measured Total Depth		True Vertical Depth	Feet From 1/4 Sec Lines
			BHL From Lease, Unit, or Property Line:

BOTTOM HOLE LOCATION FOR HORIZONTAL HOLE: (LATERALS)

LATERAL #1

SEC	TWP	RGE	COUNTY
1/4	1/4	1/4	1/4
Depth of Deviation		Radius of Turn	Direction
Measured Total Depth		True Vertical Depth	Total Length
			BHL From Lease, Unit, or Property Line:

LATERAL #2

SEC	TWP	RGE	COUNTY
1/4	1/4	1/4	1/4
Depth of Deviation		Radius of Turn	Direction
Measured Total Depth		True Vertical Depth	Total Length
			BHL From Lease, Unit, or Property Line:

LATERAL #3

SEC	TWP	RGE	COUNTY
1/4	1/4	1/4	1/4
Depth of Deviation		Radius of Turn	Direction
Measured Total Depth		True Vertical Depth	Total Length
			BHL From Lease, Unit, or Property Line: