

Oklahoma Corporation Commission
Oil & Gas Conservation Division
Post Office Box 52000
Oklahoma City, Oklahoma 73152-2000
Rule 165: 10-3-25

Form 1002A

API No.: 35051245810000

Completion Report

Spud Date: March 18, 2019

OTC Prod. Unit No.: 051-227334-0-0000

Drilling Finished Date: April 18, 2019

1st Prod Date: August 30, 2021

Completion Date: July 06, 2021

Drill Type: HORIZONTAL HOLE

Min Gas Allowable: Yes

Well Name: JESSICA 5-1-12XH

Purchaser/Measurer: ENABLE MIDSTREAM

Location: GRADY 1 7N 5W
NW NW NW NE
300 FNL 2345 FEL of 1/4 SEC
Latitude: 35.115884749 Longitude: -97.678014334
Derrick Elevation: 1317 Ground Elevation: 1289

First Sales Date: 08/31/2021

Operator: BRICKTOWN ENERGY LLC 24520

3030 NW EXPRESSWAY STE 900
OKLAHOMA CITY, OK 73112-5468

Completion Type		Location Exception		Increased Density	
X	Single Zone	Order No		Order No	
	Multiple Zone	720493		701404	
	Commingled			701405	

Casing and Cement							
Type	Size	Weight	Grade	Feet	PSI	SAX	Top of CMT
CONDUCTOR	20			108			SURFACE
SURFACE	13.375	54.5	J-55	576	850	545	SURFACE
INTERMEDIATE	9.625	36	J-55	3191	1542	595	SURFACE
PRODUCTION	5.5	23.0	P-110	20658		2785	3370

Liner								
Type	Size	Weight	Grade	Length	PSI	SAX	Top Depth	Bottom Depth
There are no Liner records to display.								

Total Depth: 20658

Packer	
Depth	Brand & Type
There are no Packer records to display.	

Plug	
Depth	Plug Type
There are no Plug records to display.	

Initial Test Data

Test Date	Formation	Oil BBL/Day	Oil-Gravity (API)	Gas MCF/Day	Gas-Oil Ratio Cu FT/BBL	Water BBL/Day	Pumpin or Flowing	Initial Shut-In Pressure	Choke Size	Flow Tubing Pressure
Sep 12, 2021	MISSISSIPPIAN,WOODFORD	360	45	521	1447	4431	FLOWING	341	64	

Completion and Test Data by Producing Formation

Formation Name: MISSISSIPPIAN

Code: 359MSSP

Class: OIL

Spacing Orders

Order No	Unit Size
678842	640
697669	640 CONFIRM
720492	MULTIUNIT

Perforated Intervals

From	To
10800	10873
17480	18738

Acid Volumes

1,000 GALLONS 7.5% HCl

Fracture Treatments

22,186,550 BARRELS FLUID
19,124,577 POUNDS SAND

Formation Name: WOODFORD

Code: 319WDFD

Class: OIL

Spacing Orders

Order No	Unit Size
678842	640
697669	640 CONFIRM
720492	MULTIUNIT

Perforated Intervals

From	To
10908	15793
15827	17444
18773	20527

Acid Volumes

ACIDIZED WITH MISSISSIPPIAN

Fracture Treatments

FRAC'D WITH MISSISSIPPIAN

Formation Name: MISSISSIPPIAN,WOODFORD

Code: 999MSPWF

Class: OIL

Formation	Top
COTTAGE GROVE	7499
CHECKERBOARD	8227
VERDIGRIS	9453
RED FORK	9923
MERAMEC	10487
SYCAMORE	10570

Were open hole logs run? No

Date last log run:

Were unusual drilling circumstances encountered? No

Explanation:

Other Remarks

ECHO E & P DRILLED WELL. WELLBORE WAS ACQUIRED BY BRICKTOWN ENERGY AND COMPLETED IN 2021. MISSISSIPPIAN AND WOODFORD PRODUCTION IN BOTH SECTIONS 1 AND 12.

Lateral Holes
Sec: 12 TWP: 7N RGE: 5W County: GRADY
NW SW SW SE
435 FSL 1254 FEL of 1/4 SEC
Depth of Deviation: 8595 Radius of Turn: 2198 Direction: 180 Total Length: 10031
Measured Total Depth: 20658 True Vertical Depth: 10725 End Pt. Location From Release, Unit or Property Line: 435

FOR COMMISSION USE ONLY
Status: Accepted
1147327

RECEIVED

NOV 22 2021

Form 1002A
Rev. 2021

API NO. 35-05124581
OTC PROD. UNIT NO. 051-227334-0-0000

Oil and Gas Conservation Division
P.O. Box 52000
Oklahoma City, OK 73152-2000
405-521-2331
OCCentralProcessing@OCC.OK.GOV



OKLAHOMA
Corporation
Commission

OKLAHOMA CORPORATION
COMMISSION

☒ ORIGINAL
☐ AMENDED (Reason) _____

Rule 165:10-3-25

COMPLETION REPORT

TYPE OF DRILLING OPERATION
☐ STRAIGHT HOLE ☐ DIRECTIONAL HOLE ☒ HORIZONTAL HOLE
☐ SERVICE WELL
If directional or horizontal, see reverse for bottom hole location.

SPUD DATE 3/18/2019

DRLG FINISHED DATE 4/18/2019

DATE OF WELL COMPLETION 7/6/2021

1st PROD DATE 8/30/2021

RECOMP DATE

COUNTY Grady SEC 01 TWP 7N RGE 05W

LEASE NAME Jessica WELL NO. 5-1-12XH

NW 1/4 NW 1/4 NW 1/4 NE 1/4 (FNL) 300 (FEL) 2345

ELEVATION Dantek FL 1317 Ground 1289 Latitude 35.115884749° N

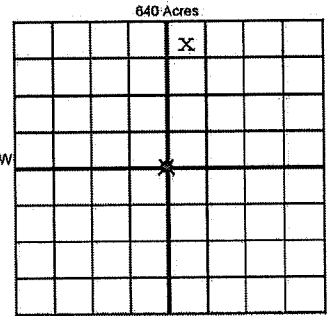
Longitude -97.678014334° W

OPERATOR NAME Bricktown Energy, LLC

OTC / OCC OPERATOR NO. 24520

ADDRESS 3030 NW Expressway Suite #900

CITY OKC STATE OK ZIP 73112



COMPLETION TYPE

☒ SINGLE ZONE
☐ MULTIPLE ZONE
☐ COMMINGLED
LOCATION EXCEPTION ORDER NO. 720493 FO
MULTIUNIT ORDER NO. 720492 FO
INCREASED DENSITY ORDER NO. 701404-701405

CASING & CEMENT (Attach Form 1002C)

TYPE	SIZE	WEIGHT	GRADE	FEET	PSI	SAX	TOP OF CMT
CONDUCTOR	20			108			Surface
SURFACE	13.375	54.5	J-55	576	850	545	Surface
INTERMEDIATE	9.625	36	J-55	3191	1542	595	Surface
PRODUCTION	5.5	23.0	P-110	20658	285	3486	3370
LINER							

PACKER @ _____ BRAND & TYPE _____ PLUG @ _____ TYPE _____ PLUG @ _____ TYPE _____
PACKER @ _____ BRAND & TYPE _____ PLUG @ _____ TYPE _____ PLUG @ _____ TYPE _____
TOTAL DEPTH 20658

COMPLETION & TEST DATA BY PRODUCING FORMATION

FORMATION	Mississippian 359MSSP	319WDFD	Woodford			Reported to Frac Focus
SPACING & SPACING ORDER NUMBER	678842 (640)	697669 confirm				
CLASS: Oil, Gas, Dry, Inj, Disp, Comm Disp, Svc	Oil	Oil				
PERFORATED INTERVALS	10800-10873	10908-15793	17480-18738	20527-15827	17444	
ACID/VOLUME	7.5%HCl: 1000 Gal					
FRACTURE TREATMENT (Fluids/Prop Amounts)	Fluid: 22,186,550 bbls Sand: 19,124,577 lbs					

☒ Min Gas Allowable (165:10-17-7)
OR
☐ Oil Allowable (165:10-13-3)

Purchaser/Measurer
First Sales Date

Enable Midstream
8/31/2021

INITIAL TEST DATA

INITIAL TEST DATE	9/12/2021					
OIL-BBL/DAY	360.53					
OIL-GRAVITY (API)	45.80					
GAS-MCF/DAY	521.76					
GAS-OIL RATIO CU FT/BBL	1447					
WATER-BBL/DAY	4431.99					
PUMPING OR FLOWING	Flowing					
INITIAL SHUT-IN PRESSURE	341.45					
CHOKE SIZE	64					
FLOW TUBING PRESSURE						

A record of the formations drilled through, and pertinent remarks are presented on the reverse. I declare that I have knowledge of the contents of this report and am authorized by my organization to make this report, which was prepared by me or under my supervision and direction, with the data and facts stated herein to be true, correct, and complete to the best of my knowledge and belief.

SIGNATURE _____ Kevin R. Fischer
3030 NW Expressway #900 OKC OK 73112
ADDRESS CITY STATE ZIP
11/16/2021 405.431.7275
DATE PHONE NUMBER
kfischer@rbluff.com
EMAIL ADDRESS

PLEASE TYPE OR USE BLACK INK ONLY
FORMATION RECORD

Give formation names and tops, if available, or descriptions and thickness of formations drilled through. Show intervals cored or drillstem tested.

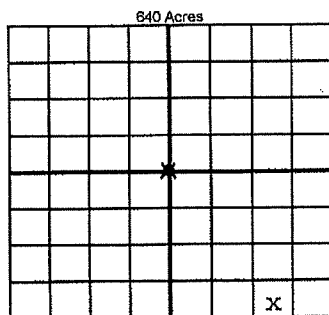
NAMES OF FORMATIONS	TOP
Cottage Grove	7499
Checkerboard	8227
Verdigris	9453
Red Fork	9923
Meramec	10487
Sycamore	10570

LEASE NAME Jessica WELL NO. 5-1-12XH

FOR COMMISSION USE ONLY	
ITD on file <input type="checkbox"/> YES <input type="checkbox"/> NO	
APPROVED <input type="checkbox"/> DISAPPROVED <input type="checkbox"/>	2) Reject Codes
<div></div> <div></div> <div></div> <div></div> <div></div>	

Were open hole logs run?	<input type="radio"/> yes <input checked="" type="radio"/> no
Date Last log was run	
Was CO ₂ encountered?	<input type="radio"/> yes <input checked="" type="radio"/> no at what depths? <u> </u>
Was H ₂ S encountered?	<input type="radio"/> yes <input checked="" type="radio"/> no at what depths? <u> </u>
Were unusual drilling circumstances encountered?	<input type="radio"/> yes <input checked="" type="radio"/> no
If yes, briefly explain below	

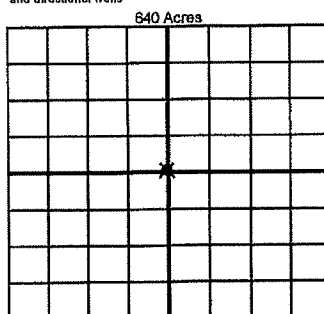
Other remarks: Echo E&P Drilled well. Wellbore was acquired by Bricktown Energy and completed in 2021
Mississippian and Woodford production in both Sec 1 & 12.



If more than three drainholes are proposed, attach a separate sheet indicating the necessary information.

Direction must be stated in degrees azimuth. Please note, the horizontal drainhole and its end point must be located within the boundaries of the lease or spacing unit.

Directional surveys are required for all drainholes and directional wells



BOTTOM HOLE LOCATION FOR DIRECTIONAL HOLE

SEC	TWP	RGE	COUNTY
1/4	1/4	1/4	1/4
Measured Total Depth	True Vertical Depth	Feet From 1/4 Sec Lines	
		BHL From Lease, Unit, or Property Line:	

BOTTOM HOLE LOCATION FOR HORIZONTAL HOLE: (LATERALS)

LATERAL #1			
SEC	TWP	RGE	COUNTY
12	7N	05W	Grady
SW 1/4	SW 1/4	SE 1/4	SE 1/4
Depth of Deviation	8595	Radius of Turn	2198
Measured Total Depth	20658	True Vertical Depth	10725
		Direction	180 178
		Total Length	10031
		BHL From Lease, Unit, or Property Line: 435' FEL 1254'	

LATERAL #2			
SEC	TWP	RGE	COUNTY
1/4	1/4	1/4	1/4
Depth of Deviation		Radius of Turn	
Measured Total Depth		True Vertical Depth	
		Direction	
		Total Length	
		BHL From Lease, Unit, or Property Line:	

LATERAL #3			
SEC	TWP	RGE	COUNTY
1/4	1/4	1/4	1/4
Depth of Deviation		Radius of Turn	
Measured Total Depth		True Vertical Depth	
		Direction	
		Total Length	
		BHL From Lease, Unit, or Property Line:	