

Oklahoma Corporation Commission
Oil & Gas Conservation Division
Post Office Box 52000
Oklahoma City, Oklahoma 73152-2000
Rule 165: 10-3-25

Form 1002A

API No.: 35119244460000

Completion Report

Spud Date: September 01, 2021

OTC Prod. Unit No.:

Drilling Finished Date: September 07, 2021

1st Prod Date: December 01, 2021

Completion Date: November 04, 2021

Drill Type: STRAIGHT HOLE

Well Name: JAMES 1-10

Purchaser/Measurer:

Location: PAYNE 10 18N 2E
W2 SE NE NW
990 FNL 2080 FWL of 1/4 SEC
Latitude: 36.059878 Longitude: -97.11245
Derrick Elevation: 0 Ground Elevation: 1055

First Sales Date:

Operator: ROBERSON OIL COMPANY INC 19500
PO BOX 8
201 E COTTAGE ST
ADA, OK 74821-0008

Completion Type		Location Exception		Increased Density	
X	Single Zone	Order No		Order No	
	Multiple Zone	There are no Location Exception records to display.		There are no Increased Density records to display.	
	Commingled				

Casing and Cement							
Type	Size	Weight	Grade	Feet	PSI	SAX	Top of CMT
SURFACE	8 5/8	24	J-55	515	3000	295	SURFACE
PRODUCTION	5 1/2	17	J-55	5012	6000	165	4030

Liner								
Type	Size	Weight	Grade	Length	PSI	SAX	Top Depth	Bottom Depth
There are no Liner records to display.								

Total Depth: 5019

Packer		Plug	
Depth	Brand & Type	Depth	Plug Type
There are no Packer records to display.		There are no Plug records to display.	

Initial Test Data										
Test Date	Formation	Oil BBL/Day	Oil-Gravity (API)	Gas MCF/Day	Gas-Oil Ratio Cu FT/BBL	Water BBL/Day	Pumpin or Flowing	Initial Shut-In Pressure	Choke Size	Flow Tubing Pressure
Nov 04, 2021	BARTLESVILLE	96	38	140	1458		FLOWING	980	18/64	146

Completion and Test Data by Producing Formation			
Formation Name: BARTLESVILLE		Code: 404BRVL	Class: OIL
Spacing Orders		Perforated Intervals	
Order No	Unit Size	From	To
221474	40	4466	4476
Acid Volumes		Fracture Treatments	
1,000 GALLONS 7 1/2% HCL		329 BARRELS WATER, 15,000 POUNDS 16/30 SAND	

Formation	Top
BIG LIME	4018
OSWEGO	4116
PINK LIME	4350
RED FORK	4370
BARTLESVILLE	44464
MISSISSIPPI	4546
WOODFORD	4694
HUNTON	4734
VIOLA	4825
WILCOX	4899

Were open hole logs run? Yes
Date last log run: September 07, 2021

Were unusual drilling circumstances encountered? No
Explanation:

Other Remarks
There are no Other Remarks.

FOR COMMISSION USE ONLY	
Status: Accepted	1147369

API NO. 119-24446
OTC PROD.
UNIT NO.

Oil and Gas Conservation Division
P.O. Box 52000
Oklahoma City, OK 73152-2000
405-521-2331
OCCCentralProcessing@OCC.OK.GOV



OKLAHOMA
Corporation
Commission

Form 1002A
Rev. 2021

☒ ORIGINAL
☐ AMENDED (Reason)

Rule 165:10-3-25

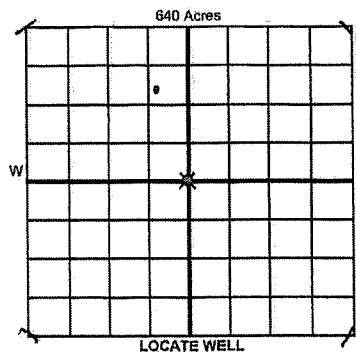
COMPLETION REPORT

TYPE OF DRILLING OPERATION

☒ STRAIGHT HOLE ☐ DIRECTIONAL HOLE ☐ HORIZONTAL HOLE
☐ SERVICE WELL

If directional or horizontal, see reverse for bottom hole location.

COUNTY	Payne	SEC	10	TWP	18N	RGE	02E	SPUD DATE	9-1-21
LEASE NAME	James	WELL NO.	1-10	DRLG FINISHED DATE	9-7-21	DATE OF WELL COMPLETION	11-4-21	1st PROD DATE	12-1-21
W/2 1/4 SE 1/4 NE 1/4 NW 1/4				990'	FWL	2080'	RECOMP DATE		
ELEVATION	Ground	1055'	Latitude	36.059878	Longitude	-97.112450			
OPERATOR NAME	Roberson Oil Company, Inc.				OTC / OCC OPERATOR NO.	19500			
ADDRESS	PO Box 8								
CITY	Ada	STATE	OK	ZIP	74821				



COMPLETION TYPE

<input checked="" type="radio"/> SINGLE ZONE	
<input type="radio"/> MULTIPLE ZONE	
<input type="radio"/> COMMINGLED	
LOCATION EXCEPTION ORDER NO.	N/A
MULTIUNIT ORDER NO.	
INCREASED DENSITY ORDER NO.	N/A

CASING & CEMENT (Attach Form 1002C)

TYPE	SIZE	WEIGHT	GRADE	FEET	PSI	SAX	TOP OF CMT
CONDUCTOR							
SURFACE	8 5/8'	24#	J-55	515	3000	295	Surface
INTERMEDIATE							
PRODUCTION	5 1/2'	17#	J-55	5012'	6000	165	4030'
LINER							(5019')

Per 1002C

PACKER @ BRAND & TYPE PLUG @ TYPE PLUG @ TYPE TOTAL DEPTH 5019

COMPLETION & TEST DATA BY PRODUCING FORMATION

FORMATION	Bartlesville						Reported
SPACING & SPACING ORDER NUMBER	221474 (40)						to Frac Fools
CLASS: Oil, Gas, Dry, Inj, Disp, Comm/Disp, Svc	Oil						
PERFORATED INTERVALS	4466-4476'						
	4spf						
ACID/VOLUME	1000 Gal of 7 1/2% HCL						
FRACTURE TREATMENT (Fluids/Prop Amounts)	329 BBLS of water 15,000 LBS 16/30 of Sand						

Min Gas Allowable (165:10-17-7)

OR

Oil Allowable (165:10-13-3)

Purchaser/Measurer

First Sales Date

INITIAL TEST DATA

INITIAL TEST DATE	11-4-21					
OIL-BBL/DAY	96					
OIL-GRAVITY (API)	38					
GAS-MCF/DAY	140					
GAS-OIL RATIO CU FT/BBL	1458					
WATER-BBL/DAY	-0-					
PUMPING OR FLOWING	Flowing					
INITIAL SHUT-IN PRESSURE	980					
CHOKE SIZE	18/64					
FLOW TUBING PRESSURE	146					

RECEIVED

DEC 16 2021

OKLAHOMA CORPORATION
COMMISSION

A record of the formations drilled through, and pertinent remarks are presented on the reverse. I declare that I have knowledge of the contents of this report and am authorized by my organization to make this report, which was prepared by me or under my supervision and direction, with the data and facts stated herein to be true, correct, and complete to the best of my knowledge and belief.

SIGNATURE
PO Box 8

David Roberson, II
NAME (PRINT OR TYPE)

Ada OK 74821
ADDRESS CITY STATE ZIP

12/14/21 580-332-6170
DATE PHONE NUMBER

ROIL11@YAHOO.COM
EMAIL ADDRESS

PLEASE TYPE OR USE BLACK INK ONLY
FORMATION RECORD

Give formation names and tops, if available, or descriptions and thickness of formations drilled through. Show intervals cored or drillstem tested.

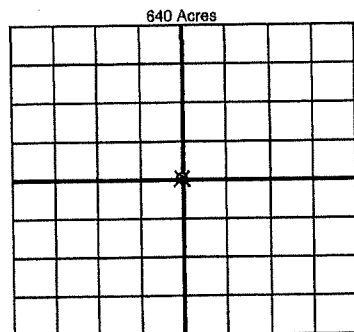
NAMES OF FORMATIONS	TOP
Big Lime	4018
Oswego	4116
Pink Lime	4350
RedFork	4370
Bartlesville	4464
Mississippi	4546
Wood Ford	4694
Hunton	4734
Viola	4825
Wilcox	4899

LEASE NAME _____ WELL NO. _____

FOR COMMISSION USE ONLY	
ITD on file <input type="checkbox"/> YES <input type="checkbox"/> NO	
APPROVED _____	DISAPPROVED _____
2) Reject Codes	

Were open hole logs run?	<input checked="" type="radio"/> yes <input type="radio"/> no
Date Last log was run	9-7-21
Was CO ₂ encountered?	<input type="radio"/> yes <input checked="" type="radio"/> no at what depths? _____
Was H ₂ S encountered?	<input type="radio"/> yes <input checked="" type="radio"/> no at what depths? _____
Were unusual drilling circumstances encountered?	<input type="radio"/> yes <input checked="" type="radio"/> no
If yes, briefly explain below	

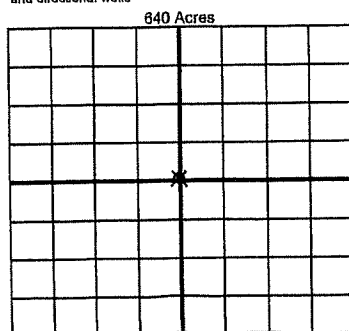
Other remarks: _____



If more than three drainholes are proposed, attach a separate sheet indicating the necessary information.

Direction must be stated in degrees azimuth.
Please note, the horizontal drainhole and its end point must be located within the boundaries of the lease or spacing unit.

Directional surveys are required for all drainholes and directional wells



BOTTOM HOLE LOCATION FOR DIRECTIONAL HOLE

SEC	TWP	RGE	COUNTY
1/4	1/4	1/4	1/4
Measured Total Depth		True Vertical Depth	Feet From 1/4 Sec Lines BHL From Lease, Unit, or Property Line:

BOTTOM HOLE LOCATION FOR HORIZONTAL HOLE: (LATERALS)

LATERAL #1			
SEC	TWP	RGE	COUNTY
1/4	1/4	1/4	1/4
Depth of Deviation		Radius of Turn	Direction
Measured Total Depth		True Vertical Depth	Total Length
		BHL From Lease, Unit, or Property Line:	

LATERAL #2			
SEC	TWP	RGE	COUNTY
1/4	1/4	1/4	1/4
Depth of Deviation		Radius of Turn	Direction
Measured Total Depth		True Vertical Depth	Total Length
		BHL From Lease, Unit, or Property Line:	

LATERAL #3			
SEC	TWP	RGE	COUNTY
1/4	1/4	1/4	1/4
Depth of Deviation		Radius of Turn	Direction
Measured Total Depth		True Vertical Depth	Total Length
		BHL From Lease, Unit, or Property Line:	