

Oklahoma Corporation Commission
Oil & Gas Conservation Division
Post Office Box 52000
Oklahoma City, Oklahoma 73152-2000
Rule 165: 10-3-25

Form 1002A

API No.: 35137025910002

Completion Report

Spud Date: April 16, 1950

OTC Prod. Unit No.: 137-023995-0-0476

Drilling Finished Date: May 06, 1950

1st Prod Date: May 14, 1950

Amended

Completion Date: May 14, 1950

Amend Reason: SWAB WELL, INSTALL ESP (REDA PUMP), PUT BACK INTO PRODUCTION

Recomplete Date: April 02, 2021

Drill Type: STRAIGHT HOLE

Min Gas Allowable: Yes

Well Name: SHOLEM ALECHEM FAULT BLOCK A UNIT 167

Purchaser/Measurer: TEPPCO CRUDE OIL LLC

Location: STEPHENS 11 1S 4W
C NW NW NW
2310 FSL 330 FWL of 1/4 SEC
Latitude: 34.49152 Longitude: -97.59637
Derrick Elevation: 1035 Ground Elevation: 1030

First Sales Date:

Operator: CITATION OIL & GAS CORPORATION 14156

14077 CUTTEN RD
HOUSTON, TX 77069-2212

Completion Type		Location Exception		Increased Density	
X	Single Zone	Order No		Order No	
	Multiple Zone	There are no Location Exception records to display.		There are no Increased Density records to display.	
	Commingled				

Casing and Cement							
Type	Size	Weight	Grade	Feet	PSI	SAX	Top of CMT
SURFACE	10 3/4			345		350	SURFACE
PRODUCTION	7			5294		350	

Liner								
Type	Size	Weight	Grade	Length	PSI	SAX	Top Depth	Bottom Depth
There are no Liner records to display.								

Total Depth: 5294

Packer		Plug	
Depth	Brand & Type	Depth	Plug Type
There are no Packer records to display.		5277	PBTD

Initial Test Data

Test Date	Formation	Oil BBL/Day	Oil-Gravity (API)	Gas MCF/Day	Gas-Oil Ratio Cu FT/BBL	Water BBL/Day	Pumpin or Flowing	Initial Shut-In Pressure	Choke Size	Flow Tubing Pressure
Apr 04, 2021	SIMS	45	30			855	PUMPING			

Completion and Test Data by Producing Formation			
Formation Name: SIMS		Code: 401SIMS	
		Class: OIL	
Spacing Orders		Perforated Intervals	
Order No	Unit Size	From	To
29987	UNIT	4984	5084
429688	UNIT		
Acid Volumes		Fracture Treatments	
NONE		NONE	

Formation	Top
SIMS	4984

Were open hole logs run? No

Date last log run:

Were unusual drilling circumstances encountered? No

Explanation:

Other Remarks
OPEN UP WELL, SWAB WELL. APRIL 2, 2021 RIH WITH ESP PRODUCTION EQUIPMENT, INSTALL REDA PUMP INSTALLED 90 JOINTS JTS OF 2 7/8 J-55 TUBING. WATCH PUMP, CONTINUE TIH WITH 2 7/8 J-55 TUBING. LAND BOTTOM OF METER @ 4907 ND BOP. RIG DOWN MOVE OFF. PUT WELL BACK INTO PRODUCTION.

FOR COMMISSION USE ONLY	
<div>Status: Accepted</div>	1147382

API NO. 35-13702591
OTC PROD. UNIT NO. 137-023995-0-0476

Oil and Gas Conservation Division
P.O. Box 52000
Oklahoma City, OK 73152-2000
405-521-2331
OCCCentralProcessing@OCC.OK.GOV



OKLAHOMA
Corporation
Commission

Form 1002A
Rev. 2021

ORIGINAL
AMENDED (Reason) swab well, install esp, put back into production

Rule 165:10-3-25

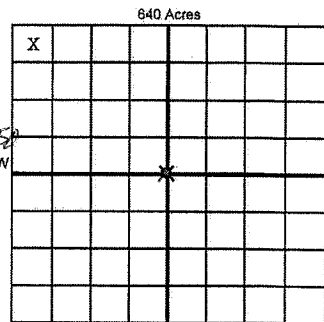
COMPLETION REPORT

TYPE OF DRILLING OPERATION

☒ STRAIGHT HOLE ☐ DIRECTIONAL HOLE ☐ HORIZONTAL HOLE
☐ SERVICE WELL

If directional or horizontal, see reverse for bottom hole location.

COUNTY	Stephens	SEC	11	TWP	1S	RGE	4W	SPUD DATE	4/16/1950
LEASE NAME	Sholem Alechem Flt Blk A (RH Brown 10)			WELL NO.	167	DATE OF WELL COMPLETION	5/14/2021	DRLG FINISHED DATE	5/6/1950
C	1/4 NW 1/4 NW 1/4 NW 1/4	FSL	2310	FWL	330	1st PROD DATE	4/4/2021	RECOMP DATE	4/2/2021
ELEVATION	1035	Ground	1030	Latitude	34.49152	Longitude	-97.59637		
OPERATOR NAME	Citation Oil and Gas Corp			OTC/OCC OPERATOR NO.	14156				
ADDRESS	14077 Cutten Road								
CITY	Houston			STATE	TX	ZIP	77069		



LOCATE WELL

COMPLETION TYPE

<input checked="" type="radio"/> SINGLE ZONE	
<input type="radio"/> MULTIPLE ZONE	
<input type="radio"/> COMMINGLED	
LOCATION EXCEPTION ORDER NO.	
MULTIUNIT ORDER NO.	
INCREASED DENSITY ORDER NO.	

CASING & CEMENT (Attach Form 1002C)

TYPE	SIZE	WEIGHT	GRADE	FEET	PSI	SAX	TOP OF CMT
CONDUCTOR							
SURFACE	10 3/4			345		350	Surface
INTERMEDIATE							
PRODUCTION	7			5294		350	
LINER							

PACKER @ _____ BRAND & TYPE _____ PLUG @ 5277 TYPE PBTD PLUG @ _____ TYPE TOTAL DEPTH 5294
PACKER @ _____ BRAND & TYPE _____ PLUG @ _____ TYPE PLUG @ _____ TYPE

COMPLETION & TEST DATA BY PRODUCING FORMATION

FORMATION	Sims					
SPACING & SPACING ORDER NUMBER	29987 (unit)	421688 (unit)				
CLASS: Oil, Gas, Dry, Inf, Disp, Comm Disp, Svc	Oil					
PERFORATED INTERVALS	4984-5084					
ACID/VOLUME	None					
FRACTURE TREATMENT (Fluids/Prop Amounts)	None					

RECEIVED

DEC 8 2021

OKLAHOMA CORPORATION
COMMISSION

☒ Min Gas Allowable (165:10-17-7)
OR
Oil Allowable (165:10-13-3)

Purchaser/Measurer First Sales Date
Teppco Crude Oil LLC

INITIAL TEST DATA

INITIAL TEST DATE	4/4/2021					
OIL-BBL/DAY	45					
OIL-GRAVITY (API)	30					
GAS-MCF/DAY	0					
GAS-OIL RATIO CU FT/BBL	0					
WATER-BBL/DAY	855					
PUMPING OR FLOWING	Pumping					
INITIAL SHUT-IN PRESSURE						
CHOKE SIZE						
FLOW TUBING PRESSURE						

A record of the formations drilled through, and pertinent remarks are presented on the reverse. I declare that I have knowledge of the contents of this report and am authorized by my organization to make this report, which was prepared by me or under my supervision and direction, with the data and facts stated herein to be true, correct, and complete to the best of my knowledge and belief.

Kelly Vasquez
14077 Cutten Road
Houston TX 77069

Kelly Vasquez
NAME (PRINT OR TYPE)
CITY STATE ZIP

12/27/2021 281-891-1555
DATE PHONE NUMBER
kvasquez@cogc.com
EMAIL ADDRESS

PLEASE TYPE OR USE BLACK INK ONLY

FORMATION RECORD

Give formation names and tops, if available, or descriptions and thickness of formations drilled through. Show intervals cored or drillstem tested.

NAMES OF FORMATIONS	TOP
Sims	4984

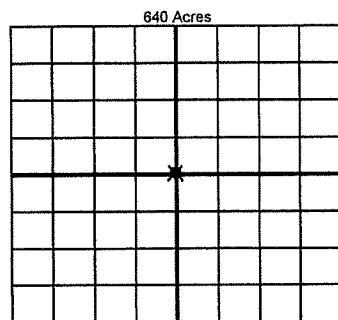
LEASE NAME SAFBAU(RH Brown 10)

WELL NO. 167

FOR COMMISSION USE ONLY	
ITD on file <input type="checkbox"/> YES <input type="checkbox"/> NO	
APPROVED _____	DISAPPROVED _____
2) Reject Codes	

Were open hole logs run?	<input type="radio"/> yes <input checked="" type="radio"/> no
Date Last log was run	_____
Was CO ₂ encountered?	<input type="radio"/> yes <input checked="" type="radio"/> no at what depths? _____
Was H ₂ S encountered?	<input type="radio"/> yes <input checked="" type="radio"/> no at what depths? _____
Were unusual drilling circumstances encountered?	<input type="radio"/> yes <input checked="" type="radio"/> no
If yes, briefly explain below	

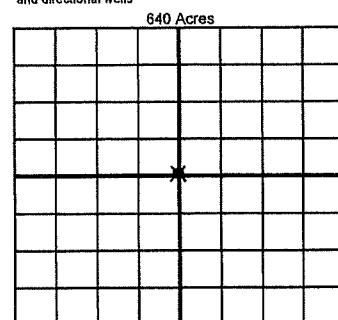
Other remarks: Open up well , Swab well . 4/2/21 RIH with ESP production equipment , install reda pump installed 90 joints jts of 2 7/8 J-55 tubing .
Watch pump , continue TIH with 2 7/8 J-55 tubing . Land bottom of meter @ 4907 ND BOP . Rig Down move off . Put well back into production .



If more than three drainholes are proposed, attach a separate sheet indicating the necessary information.

Direction must be stated in degrees azimuth. Please note, the horizontal drainhole and its end point must be located within the boundaries of the lease or spacing unit.

Directional surveys are required for all drainholes and directional wells



BOTTOM HOLE LOCATION FOR DIRECTIONAL HOLE

SEC	TWP	RGE	COUNTY
1/4	1/4	1/4	1/4
Measured Total Depth		True Vertical Depth	Feet From 1/4 Sec Lines BHL From Lease, Unit, or Property Line:

BOTTOM HOLE LOCATION FOR HORIZONTAL HOLE: (LATERALS)

LATERAL #1			
SEC	TWP	RGE	COUNTY
1/4	1/4	1/4	1/4
Depth of Deviation		Radius of Turn	Direction
Measured Total Depth		True Vertical Depth	Total Length
		BHL From Lease, Unit, or Property Line:	

LATERAL #2			
SEC	TWP	RGE	COUNTY
1/4	1/4	1/4	1/4
Depth of Deviation		Radius of Turn	Direction
Measured Total Depth		True Vertical Depth	Total Length
		BHL From Lease, Unit, or Property Line:	

LATERAL #3			
SEC	TWP	RGE	COUNTY
1/4	1/4	1/4	1/4
Depth of Deviation		Radius of Turn	Direction
Measured Total Depth		True Vertical Depth	Total Length
		BHL From Lease, Unit, or Property Line:	