

Oklahoma Corporation Commission
Oil & Gas Conservation Division
Post Office Box 52000
Oklahoma City, Oklahoma 73152-2000
Rule 165: 10-3-25

Form 1002A

API No.: 35019223680001

Completion Report

Spud Date: October 18, 1981

OTC Prod. Unit No.:

Drilling Finished Date: November 04, 1981

Amended

1st Prod Date: December 09, 1981

Amend Reason: RECOMPLETE - ADDED PERFORATIONS AND NEW FRACTURE TREATMENT

Completion Date: December 12, 1981

Recomplete Date: July 30, 2021

Drill Type: STRAIGHT HOLE

Min Gas Allowable: Yes

Well Name: HEWITT UNIT (HEWITT UNIT 2442) 22-4402

Purchaser/Measurer:

Location: CARTER 22 4S 2W
NE SE NE SW
1930 FSL 2590 FWL of 1/4 SEC
Latitude: 34.1924732 Longitude: -97.3960489
Derrick Elevation: 904 Ground Elevation: 890

First Sales Date:

Operator: XTO ENERGY INC 21003

22777 SPRINGWOODS VILLAGE PARKWAY
SPRING, TX 77389-1425

Completion Type		Location Exception		Increased Density	
X	Single Zone	Order No		Order No	
	Multiple Zone	There are no Location Exception records to display.		There are no Increased Density records to display.	
	Commingled				

Casing and Cement							
Type	Size	Weight	Grade	Feet	PSI	SAX	Top of CMT
SURFACE	10 3/4	40.5	K-55	720	1100	1100	SURFACE
PRODUCTION	7	20 & 23	K-55	2958	1100	1265	

Liner								
Type	Size	Weight	Grade	Length	PSI	SAX	Top Depth	Bottom Depth
There are no Liner records to display.								

Total Depth: 2960

Packer	
Depth	Brand & Type
There are no Packer records to display.	

Plug	
Depth	Plug Type
There are no Plug records to display.	

Initial Test Data

Test Date	Formation	Oil BBL/Day	Oil-Gravity (API)	Gas MCF/Day	Gas-Oil Ratio Cu FT/BBL	Water BBL/Day	Pumpin or Flowing	Initial Shut-In Pressure	Choke Size	Flow Tubing Pressure
Aug 07, 2021	HEWITT	177				1707	PUMPING			

Completion and Test Data by Producing Formation

Formation Name: HEWITT		Code: 405HWTT		Class: OIL	
Spacing Orders		Perforated Intervals			
Order No	Unit Size	From	To		
67990	UNIT	1140	2738		
Acid Volumes		Fracture Treatments			
2,500 GALLONS 15% HCL		10,000 GALLONS K-1 POLYM			

Formation Name: HEWITT		Code: 405HWTT		Class: OIL	
Spacing Orders		Perforated Intervals			
Order No	Unit Size	From	To		
67990	UNIT	1290	1418		
		1513	1537		
		1544	1554		
		1708	1784		
Acid Volumes		Fracture Treatments			
3,000 GALLONS 15% HCl		4,050 BARRELS X-LINK, 205,000 POUNDS SAND, 3 STAGE FRAC			

Formation	Top
BAYOU UPPER	1140
CHUBBEE	1586
HEWITT	1694
HEWITT	1896
HEWITT	2286
HEWITT	2730

Were open hole logs run? Yes
Date last log run: November 03, 1981

Were unusual drilling circumstances encountered? No
Explanation:

Other Remarks
ADDED PERFORATIONS: 1,290' - 1,418, 1,513' - 1,537', 1,544' - 1,554', 1,708' - 1,784'. FRAC 3 STAGES: 3,000 GALLONS 15% HCL, 4,050 BARRELS X-LINK 205,000 POUNDS SAND OCC - A DETAILED BREAKDOWN OF THE ORIGINAL PERFORATIONS BETWEEN 1140' AND 2738' CAN BE SEEN ON ORIGINAL 1002A.

FOR COMMISSION USE ONLY
<div>Status: Accepted</div> <div>1147336</div>

API NO. 35-019-22368
OTC PROD. UNIT NO. 019-06407

Oil and Gas Conservation Division
P.O. Box 52000
Oklahoma City, OK 73152-2000
405-522-0577
OCCCentralProcessing@OCC.OK.GOV



OKLAHOMA
Corporation
Commission

RECEIVED
Form 002A
Rev 2020

DEC 06 2021

ORIGINAL
AMENDED (Reason) _____
Recomplete - Added Perfs

Rule 165:10-3-25

COMPLETION REPORT

TYPE OF DRILLING OPERATION
☒ STRAIGHT HOLE ☐ DIRECTIONAL HOLE ☐ HORIZONTAL HOLE
☐ SERVICE WELL
If directional or horizontal, see reverse for bottom hole location.

SPUD DATE 10/18/1981

DRLG FINISHED DATE 11/4/1981

DATE OF WELL COMPLETION 12/12/1981

1st PROD DATE 12/9/1981

RECOMP DATE 7/30/2021

COUNTY Carter SEC 22 TWP 4S RGE 2W

LEASE NAME Hewitt Unit WELL NO. 22-4402

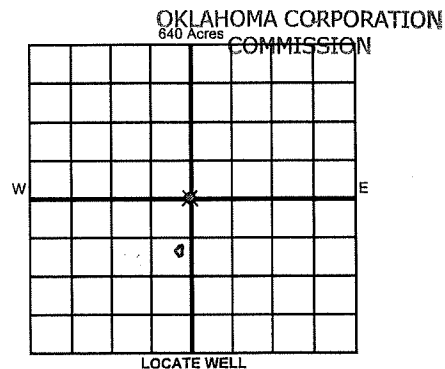
NE 1/4 SE 1/4 NE 1/4 SW 1/4 FSL 1930 FWL 2590

ELEVATION Derrick FL 904 Ground 890 Latitude 34.1924732 Longitude -97.3960489

OPERATOR NAME XTO Energy Inc OTC / OCC OPERATOR NO. 21003

ADDRESS 210 Park Ave, Suite 2350

CITY Oklahoma City STATE OK ZIP 73102



COMPLETION TYPE

☒ SINGLE ZONE
☐ MULTIPLE ZONE
Application Date
☐ COMMINGLED
Application Date
LOCATION EXCEPTION ORDER NO.
MULTIUNIT ORDER NO.
INCREASED DENSITY ORDER NO.

CASING & CEMENT (Attach Form 1002C)

TYPE	SIZE	WEIGHT	GRADE	FEET	PSI	SAX	TOP OF CMT
CONDUCTOR							
SURFACE	10 3/4"	40.5#	K-55	720'	1100	1100 Class H	Surface
INTERMEDIATE							
PRODUCTION	7"	20#, 23#	K-55	2958'	1100	1265 Class H	
LINER							

PACKER @ _____ BRAND & TYPE _____ PLUG @ _____ TYPE _____ PLUG @ _____ TYPE _____ TOTAL DEPTH 2960'
PACKER @ _____ BRAND & TYPE _____ PLUG @ _____ TYPE _____ PLUG @ _____ TYPE _____

COMPLETION & TEST DATA BY PRODUCING FORMATION

FORMATION	Hewitt Sands	Hewitt Sands				
SPACING & SPACING ORDER NUMBER	67990 (Unit)	67990 (Unit)				
CLASS: Oil, Gas, Dry, Inj, Disp, Comm Disp, Svc	Oil	Oil				
PERFORATED INTERVALS	1140' - 2738'	1290' - 1784'				
		(in Remark see Just New party)				
ACID/VOLUME	2500 gal 15% HCL	3000 gal 15% HCL				
FRACTURE TREATMENT (Fluids/Prop Amounts)	10,000 gal k-1 polym.	4050 bbls X-Link 205k# snd 3 stage Frac				

Monitor Report to Frac Fluids

☒ Min Gas Allowable (165:10-17-7) OR Oil Allowable (165:10-13-3) Purchaser/Measurer First Sales Date

INITIAL TEST DATA

INITIAL TEST DATE	12/12/81	8/7/21			
OIL-BBL/DAY	147	177			
OIL-GRAVITY (API)					
GAS-MCF/DAY					
GAS-OIL RATIO CU FT/BBL	0	0			
WATER-BBL/DAY	1277	1707			
PUMPING OR FLOWING	Pumping	Pumping			
INITIAL SHUT-IN PRESSURE					
CHOKE SIZE					
FLOW TUBING PRESSURE					

A record of the formations drilled through, and pertinent remarks are presented on the reverse. I declare that I have knowledge of the contents of this report and am authorized by my organization to make this report, which was prepared by me or under my supervision and direction, with the data and facts stated herein to be true, correct, and complete to the best of my knowledge and belief.

SIGNATURE _____ NAME (PRINT OR TYPE) _____ DATE 12/6/21 PHONE NUMBER 405-594-9453
210 Park Ave, Suite 2350 Oklahoma City OK 73102 liv.adams@exxonmobil.com
ADDRESS CITY STATE ZIP EMAIL ADDRESS

PLEASE TYPE OR USE BLACK INK ONLY

FORMATION RECORD

Give formation names and tops, if available, or descriptions and thickness of formations drilled through. Show intervals cored or drillstem tested.

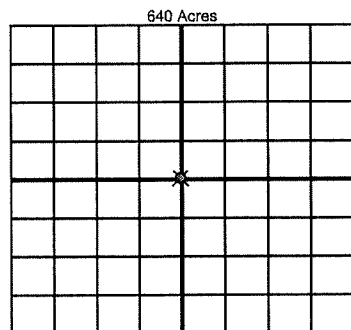
NAMES OF FORMATIONS		TOP
Upper Bayou		1140'
Chubbee		1586'
Hewitt Sands	1B	1694'
	2C	1896'
	3C	2286'
	4C	2730'

LEASE NAME _____ Hewitt Unit _____ WELL NO. _____ 22-4402

FOR COMMISSION USE ONLY	
ITD on file <input type="checkbox"/> YES <input type="checkbox"/> NO	
APPROVED _____	DISAPPROVED _____
2) Reject Codes	

Were open hole logs run?	<input checked="" type="radio"/> yes <input type="radio"/> no
Date Last log was run	11/2/81
Was CO ₂ encountered?	<input type="radio"/> yes <input type="radio"/> no at what depths? _____
Was H ₂ S encountered?	<input type="radio"/> yes <input type="radio"/> no at what depths? _____
Were unusual drilling circumstances encountered?	<input type="radio"/> yes <input type="radio"/> no
If yes, briefly explain below	

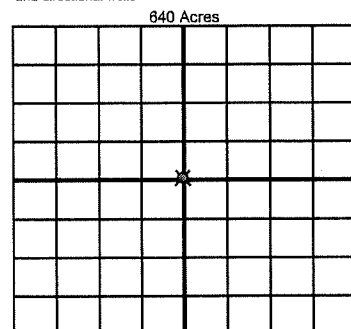
Other remarks: Added perfs; 1290'-1418', 1513'-1537', 1544'-1554', 1708'-1784'.
 Frac 3-stages: 3000 gal 15% HCL, 4050 bbls X-Link 205k# snd.



If more than three drainholes are proposed, attach a separate sheet indicating the necessary information.

Direction must be stated in degrees azimuth. Please note, the horizontal drainhole and its end point must be located within the boundaries of the lease or spacing unit.

Directional surveys are required for all drainholes and directional wells



BOTTOM HOLE LOCATION FOR DIRECTIONAL HOLE

SEC	TWP	RGE	COUNTY
1/4	1/4	1/4	1/4
Measured Total Depth		True Vertical Depth	Feet From 1/4 Sec Lines
BHL From Lease, Unit, or Property Line:			

BOTTOM HOLE LOCATION FOR HORIZONTAL HOLE: (LATERALS)

LATERAL #1

SEC	TWP	RGE	COUNTY
1/4	1/4	1/4	1/4
Depth of Deviation		Radius of Turn	Direction
Measured Total Depth		True Vertical Depth	Total Length
BHL From Lease, Unit, or Property Line:			

LATERAL #2

SEC	TWP	RGE	COUNTY
1/4	1/4	1/4	1/4
Depth of Deviation		Radius of Turn	Direction
Measured Total Depth		True Vertical Depth	Total Length
BHL From Lease, Unit, or Property Line:			

LATERAL #3

SEC	TWP	RGE	COUNTY
1/4	1/4	1/4	1/4
Depth of Deviation		Radius of Turn	Direction
Measured Total Depth		True Vertical Depth	Total Length
BHL From Lease, Unit, or Property Line:			