

Oklahoma Corporation Commission  
Oil & Gas Conservation Division  
Post Office Box 52000  
Oklahoma City, Oklahoma 73152-2000  
Rule 165: 10-3-25

Form 1002A

API No.: 35071246000001

**Completion Report**

Spud Date: December 21, 2012

OTC Prod. Unit No.: 071-209526-0-0000

Drilling Finished Date: December 31, 2012

**Amended**

1st Prod Date: April 01, 2013

Amend Reason: SET PLUG ABOVE MISSISSIPPI LIME / ACIDIZE SKINNER

Completion Date: May 15, 2013

Recomplete Date: April 29, 2021

**Drill Type: STRAIGHT HOLE**

Well Name: PETERS 1-6

Purchaser/Measurer:

Location: KAY 6 27N 2E  
C SE SE  
660 FSL 1980 FWL of 1/4 SEC  
Latitude: 36.84173 Longitude: -97.12344  
Derrick Elevation: 1098 Ground Elevation: 1085

First Sales Date:

Operator: BARBER OIL LLC 24363

8801 S YALE AVE STE 150  
TULSA, OK 74137-3575

Completion Type	
	Single Zone
	Multiple Zone
X	Commingled

Location Exception
Order No
There are no Location Exception records to display.

Increased Density
Order No
There are no Increased Density records to display.

Casing and Cement							
Type	Size	Weight	Grade	Feet	PSI	SAX	Top of CMT
SURFACE	8 5/8	24	J-55	224	200	175	SURFACE
PRODUCTION	5 1/2	15.5	J-55	4074	1160	300	2000

Liner								
Type	Size	Weight	Grade	Length	PSI	SAX	Top Depth	Bottom Depth
There are no Liner records to display.								

**Total Depth: 4080**

Packer	
Depth	Brand & Type
There are no Packer records to display.	

Plug	
Depth	Plug Type
3880	CIBP

Initial Test Data
-------------------

Test Date	Formation	Oil BBL/Day	Oil-Gravity (API)	Gas MCF/Day	Gas-Oil Ratio Cu FT/BBL	Water BBL/Day	Pumpin or Flowing	Initial Shut-In Pressure	Choke Size	Flow Tubing Pressure
May 01, 2021	COMMINGLED	1.5	39			30	PUMPING			
<b>Completion and Test Data by Producing Formation</b>										
Formation Name: MISSISSIPPI CHAT			Code: 401MSSCT			Class: OIL				
<b>Spacing Orders</b>				<b>Perforated Intervals</b>						
<b>Order No</b>		<b>Unit Size</b>		<b>From</b>			<b>To</b>			
593862		160		3752			3754			
				3756			3762			
				3764			3770			
<b>Acid Volumes</b>				<b>Fracture Treatments</b>						
1,200 GALLONS				NONE						
Formation Name: SKINNER			Code: 404SKNR			Class: OIL				
<b>Spacing Orders</b>				<b>Perforated Intervals</b>						
<b>Order No</b>		<b>Unit Size</b>		<b>From</b>			<b>To</b>			
593862		160		3523			3532			
				3710			3713			
<b>Acid Volumes</b>				<b>Fracture Treatments</b>						
1,000 GALLONS				300 BARRELS, 13,230 POUNDS SAND						
Formation Name: SKINNER			Code: 404SKNR			Class: OIL				
<b>Spacing Orders</b>				<b>Perforated Intervals</b>						
<b>Order No</b>		<b>Unit Size</b>		<b>From</b>			<b>To</b>			
563536		160		3523			3532			
				3710			3713			
<b>Acid Volumes</b>				<b>Fracture Treatments</b>						
250 GALLONS				NONE						
Formation Name: COMMINGLED			Code: 000CMGL			Class: OIL				

Formation	Top
TONKAWA SAND	2358
LAYTON SAND	2796
CLEVELAND SAND	3140
BIG LIME OSWEGO	3236

Were open hole logs run? Yes

Date last log run: December 31, 2012

Were unusual drilling circumstances encountered? No

Explanation:

SKINNER SAND	3514
MISSISSIPPI CHAT	3708
MISSISSIPPI LIME	3832
WILCOX	4074

<b>Other Remarks</b>
A CIBP WAS SET TO CLOSE OFF THE MISSISSIPPI LIME AND THEN THE EXISTING SKINNER WAS ACIDIZED.

<b>FOR COMMISSION USE ONLY</b>	
Status: Accepted	1147350

API NO. 071-24600  
OTC PROD. UNIT NO. 071-209526

Oil and Gas Conservation Division  
P.O. Box 52000  
Oklahoma City, OK 73152-2000  
405-522-0577  
OCCCentralProcessing@OCC.OK.GOV



OKLAHOMA  
Corporation  
Commission

Form 1002A  
Rev. 2020

8 ORIGINAL  
AMENDED (Reason) *set Plug above Mississippi Line  
acidize Skinner*

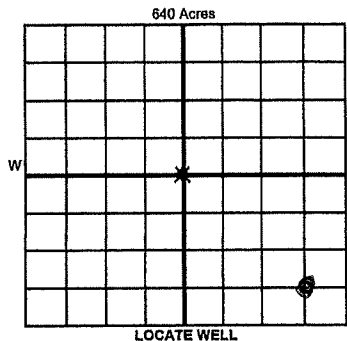
Rule 165:10-3-25

COMPLETION REPORT

TYPE OF DRILLING OPERATION  
☒ STRAIGHT HOLE ☐ DIRECTIONAL HOLE ☐ HORIZONTAL HOLE  
☐ SERVICE WELL

If directional or horizontal, see reverse for bottom hole location.

COUNTY	Key	SEC	6	TWP	27N	RGE	2E	SPUD DATE	12/21/2012
LEASE NAME	Peters	WELL NO.	1-6	DRLG FINISHED DATE	12/31/2012	DATE OF WELL COMPLETION	5/15/2013	1st PROD DATE	4/1/2013
C	1/4 SE 1/4 SE 1/4	1/4	FWL	660'	FWL	1980'	RECOMP DATE	4/29/2021	
ELEVATION Derrick FL	1098	Ground	1085	Latitude		Longitude			
OPERATOR NAME	Barber Oil, LLC	OTC / OCC OPERATOR NO.	24363						
ADDRESS	8801 South Yale Avenue, Suite 150								
CITY	Tulsa	STATE	OK	ZIP	74137				



COMPLETION TYPE

<input type="radio"/> SINGLE ZONE	
<input type="radio"/> MULTIPLE ZONE	
<input type="radio"/> COMMINGLED	
<input type="radio"/> LOCATION EXCEPTION	
<input type="radio"/> MULTIUNIT ORDER NO.	
<input type="radio"/> INCREASED DENSITY	

CASING & CEMENT (Attach Form 1002C)

TYPE	SIZE	WEIGHT	GRADE	FEET	PSI	SAX	TOP OF CMT
CONDUCTOR							
SURFACE	8 5/8"	24#	J-55	224'	200	175	Surface
INTERMEDIATE							
PRODUCTION	5 1/2"	15.5#	J-55	4074'	1160	300	2000'
LINER							

PACKER @ \_\_\_\_\_ BRAND & TYPE \_\_\_\_\_ PLUG @ 3880' TYPE CIBP PLUG @ \_\_\_\_\_ TYPE \_\_\_\_\_ TOTAL DEPTH 4080'  
PACKER @ \_\_\_\_\_ BRAND & TYPE \_\_\_\_\_ PLUG @ \_\_\_\_\_ TYPE \_\_\_\_\_ PLUG @ \_\_\_\_\_ TYPE \_\_\_\_\_

COMPLETION & TEST DATA BY PRODUCING FORMATION

FORMATION	Mississippi Chat	Skinner	Skinner	No New Fract
SPACING & SPACING ORDER NUMBER	593862 - 160 ac.	593862 - 160 ac.	563538 - 160 ac.	
CLASS: Oil, Gas, Dry, Inj, Disp, Comm Disp, Svc	Gas Oil (now) <input checked="" type="checkbox"/>	Gas Oil (now) <input checked="" type="checkbox"/>	Oil <input checked="" type="checkbox"/>	
PERFORATED INTERVALS	3752'-3754'	3710'-3713'	aidized	
	3756'-3762'	3523'-3532'	existing perms	
	3764'-3770'			
ACID/VOLUME	1200 gals	1000 gals	250 gals	
FRACTURE TREATMENT (Fluids/Prop Amounts)	no	300 bbls 13230# sand	no	

RECEIVED  
DEC 16 2021  
OKLAHOMA CORPORATION  
COMMISSION

Min Gas Allowable (165:10-17-7)

Purchaser/Measurer



Oil Allowable (165:10-13-3)

First Sales Date

INITIAL TEST DATA

INITIAL TEST DATE	2/6/2013	3/29/2013	5/1/2021
OIL-BBL/DAY	2	18	1.50
OIL-GRAVITY (API)	38	39	39
GAS-MCF/DAY	60	300	0
GAS-OIL RATIO CU FT/BBL	30000	16667	0
WATER-BBL/DAY	10	230	30
PUMPING OR FLOWING	Pumping	Pumping	Pumping
INITIAL SHUT-IN PRESSURE	150	150	N/A
CHOKE SIZE	NA	NA	NA
FLOW TUBING PRESSURE	NA	NA	NA

A record of the formations drilled through, and pertinent remarks are presented on the reverse. I declare that I have knowledge of the contents of this report and am authorized by my organization to make this report, which was prepared by me or under my supervision and direction, with the data and facts stated herein to be true, correct, and complete to the best of my knowledge and belief.

SIGNATURE	Barbara Courtney	DATE	918-638-5961
8801 South Yale Ave, Suite 150	Tulsa OK 74137	PHONE NUMBER	
ADDRESS	CITY STATE ZIP	EMAIL ADDRESS	bcourtney@barberoilo.com

PLEASE TYPE OR USE BLACK INK ONLY

FORMATION RECORD

Give formation names and tops, if available, or descriptions and thickness of formations drilled through. Show intervals cored or drillstem tested.

NAMES OF FORMATIONS	TOP
Tonkawa Sand	2,358
Layton Sand	2,796
Cleveland Sand	3,140
Big Lime Oswego	3,236
Skinner Sand	3,514
Mississippi Chat	3,708
Mississippi Lime	3,832
Wilcox	4,074

LEASE NAME \_\_\_\_\_

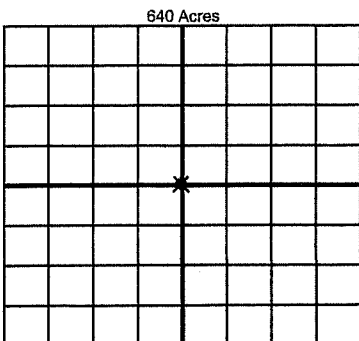
WELL NO. \_\_\_\_\_

FOR COMMISSION USE ONLY	
ITD on file <input type="checkbox"/> YES <input type="checkbox"/> NO	
APPROVED _____	DISAPPROVED _____
2) Reject Codes	
_____	
_____	
_____	
_____	

Were open hole logs run?	<input checked="" type="radio"/> yes <input type="radio"/> no
Date Last log was run	12/31/2012
Was CO <sub>2</sub> encountered?	<input type="radio"/> yes <input checked="" type="radio"/> no at what depths? _____
Was H <sub>2</sub> S encountered?	<input type="radio"/> yes <input checked="" type="radio"/> no at what depths? _____
Were unusual drilling circumstances encountered?	<input type="radio"/> yes <input checked="" type="radio"/> no
If yes, briefly explain below	

Other remarks:

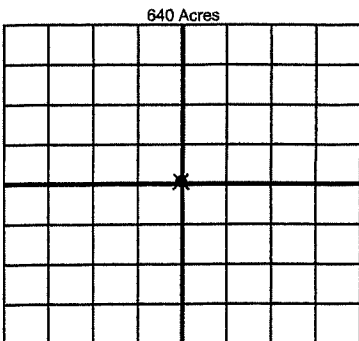
A CIPB was set to close off the Mississippi Lime and then the existing Skinner was acidized.



If more than three drainholes are proposed, attach a separate sheet indicating the necessary information.

Direction must be stated in degrees azimuth. Please note, the horizontal drainhole and its end point must be located within the boundaries of the lease or spacing unit.

Directional surveys are required for all drainholes and directional wells



BOTTOM HOLE LOCATION FOR DIRECTIONAL HOLE

SEC	TWP	RGE	COUNTY
1/4	1/4	1/4	1/4
Measured Total Depth		True Vertical Depth	Feet From 1/4 Sec Lines
BHL From Lease, Unit, or Property Line:			

BOTTOM HOLE LOCATION FOR HORIZONTAL HOLE: (LATERALS)

LATERAL #1			
SEC	TWP	RGE	COUNTY
1/4	1/4	1/4	1/4
Depth of Deviation		Radius of Turn	Direction
Measured Total Depth		True Vertical Depth	Total Length
BHL From Lease, Unit, or Property Line:			

LATERAL #2			
SEC	TWP	RGE	COUNTY
1/4	1/4	1/4	1/4
Depth of Deviation		Radius of Turn	Direction
Measured Total Depth		True Vertical Depth	Total Length
BHL From Lease, Unit, or Property Line:			

LATERAL #3			
SEC	TWP	RGE	COUNTY
1/4	1/4	1/4	1/4
Depth of Deviation		Radius of Turn	Direction
Measured Total Depth		True Vertical Depth	Total Length
BHL From Lease, Unit, or Property Line:			