

Oklahoma Corporation Commission  
Oil & Gas Conservation Division  
Post Office Box 52000  
Oklahoma City, Oklahoma 73152-2000  
Rule 165: 10-3-25

Form 1002A

API No.: 35083244550000

**Completion Report**

Spud Date: September 18, 2021

OTC Prod. Unit No.: 083-227506-0-3255

Drilling Finished Date: October 08, 2021

1st Prod Date: November 04, 2021

Completion Date: October 27, 2021

**Drill Type:** HORIZONTAL HOLE

Min Gas Allowable: Yes

Well Name: MAYS 1-36H25X24

Purchaser/Measurer: ENERGY TRANSFER

Location: LOGAN 36 18N 3W  
NW NW NE NW  
226 FNL 1403 FWL of 1/4 SEC  
Latitude: 35.999368 Longitude: -97.474759  
Derrick Elevation: 928 Ground Elevation: 911

First Sales Date: 11/04/2021

Operator: OSO RESOURCES LLC 24580

4335 N CLASSEN BLVD STE 200  
OKLAHOMA CITY, OK 73118-5022

Completion Type		Location Exception		Increased Density	
X	Single Zone	Order No		Order No	
	Multiple Zone	There are no Location Exception records to display.		There are no Increased Density records to display.	
	Commingled				

Casing and Cement							
Type	Size	Weight	Grade	Feet	PSI	SAX	Top of CMT
SURFACE	9 5/8	36	K-55	530		185	SURFACE
PRODUCTION	7	26	HCP-110	5731		290	3583

Liner								
Type	Size	Weight	Grade	Length	PSI	SAX	Top Depth	Bottom Depth
LINER	4 1/2	13.5	HCP-110	6515	0	560	5335	11850

**Total Depth: 11906**

Packer	
Depth	Brand & Type
There are no Packer records to display.	

Plug	
Depth	Plug Type
There are no Plug records to display.	

Initial Test Data
-------------------

Test Date	Formation	Oil BBL/Day	Oil-Gravity (API)	Gas MCF/Day	Gas-Oil Ratio Cu FT/BBL	Water BBL/Day	Pumpin or Flowing	Initial Shut-In Pressure	Choke Size	Flow Tubing Pressure
Nov 07, 2021	OSWEGO	499	43	439	880	1694	PUMPING			

Completion and Test Data by Producing Formation

Formation Name: OSWEGO

Code: 404OSWG

Class: OIL

Spacing Orders

Order No	Unit Size
403591	UNIT

Perforated Intervals

From	To
5770	11768

Acid Volumes

7,087 BARRELS 15% HCl,  
68,241 BARRELS SLICKWATER

Fracture Treatments

There are no Fracture Treatments records to display.

Formation	Top
OSWEGO	5160

Were open hole logs run? No

Date last log run:

Were unusual drilling circumstances encountered? No

Explanation:

Other Remarks

There are no Other Remarks.

Lateral Holes

Sec: 24 TWP: 18N RGE: 3W County: LOGAN

E2 W2 W2 SW

1320 FSL 337 FWL of 1/4 SEC

Depth of Deviation: 4385 Radius of Turn: 1346 Direction: 354 Total Length: 6176

Measured Total Depth: 11906 True Vertical Depth: 5200 End Pt. Location From Release, Unit or Property Line: 337

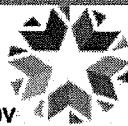
FOR COMMISSION USE ONLY

Status: Accepted

1147341

API NO. 35-083-24455  
OTC PROD. UNIT NO. 083-227506-0-3255

Oil and Gas Conservation Division  
P.O. Box 52000  
Oklahoma City, OK 73152-2000  
405-521-2331  
OCCentralProcessing@OCC.OK.GOV



OKLAHOMA  
Corporation  
Commission

Submitted  
1-3-2022  
DKN

Form 1002A  
Rev. 2021



ORIGINAL  
AMENDED (Reason)

Rule 165:10-3-25

COMPLETION REPORT

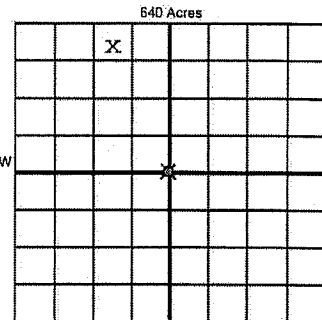
TYPE OF DRILLING OPERATION

☐ STRAIGHT HOLE ☐ DIRECTIONAL HOLE ☒ HORIZONTAL HOLE  
☐ SERVICE WELL

If directional or horizontal, see reverse for bottom hole location.

COUNTY Logan SEC 36 TWP 18N RGE 3W  
LEASE NAME Mays  
WELL NO. 1-36H25X24 1st PROD DATE 11/4/2021  
NW 1/4 NW 1/4 NE 1/4 NW 1/4 FNL 226' FWL 1403 RECOMP DATE  
ELEVATION 928' Ground 911' Latitude 35.999368 N Longitude -- 97.474759 W  
OPERATOR Oso Resources, LLC OTC/OCC OPERATOR NO. 24580  
ADDRESS 4335 N. Classen Blvd.; Suite 200  
CITY Oklahoma City STATE OK ZIP 73118

SPUD DATE 9/18/2021  
DRLG FINISHED DATE 10/8/2021  
DATE OF WELL COMPLETION 10/27/2021  
1st PROD DATE 11/4/2021  
RECOMP DATE



LOCATE WELL

COMPLETION TYPE

☒ SINGLE ZONE  
☐ MULTIPLE ZONE  
☐ COMMINGLED  
LOCATION EXCEPTION ORDER NO.  
MULTIUNIT ORDER NO.  
INCREASED DENSITY ORDER NO.

CASING & CEMENT (Attach Form 1002C)

TYPE	SIZE	WEIGHT	GRADE	FEET	PSI	SAX	TOP OF CMT
CONDUCTOR							
SURFACE	9 5/8"	36#	K-55	530'		185	Surface
INTERMEDIATE							
PRODUCTION	7"	26#	HCP-110	5,731'		290	3,583'
LINER	4 1/2"	13.5#	HCP-110	5,335' 6,529' 11,850'		560	5,334'

PACKER @ BRAND & TYPE PLUG @ TYPE PLUG @ TYPE TOTAL DEPTH 11,906'

COMPLETION & TEST DATA BY PRODUCING FORMATION 404 OSWEGO

FORMATION	Oswego Limestone					No Frac
SPACING & SPACING ORDER NUMBER	403591 (unit)					
CLASS: Oil, Gas, Dry, Inj, Disp, Comin Disp, Svc	Oil					
PERFORATED INTERVALS	5,770-11,768'					
ACID/VOLUME	7,087 bbls 15% HCL					
FRACTURE TREATMENT (Fluids/Prop Amounts)	68,241 bbls Slickwater					

☒ Min Gas Allowable (165:10-17-7)  
OR  
Oil Allowable (165:10-13-3)

Purchaser/Measurer  
First Sales Date 11/4/2021

INITIAL TEST DATA

INITIAL TEST DATE	11/7/2021					
OIL-BBL/DAY	499					
OIL-GRAVITY (API)	43					
GAS-MCF/DAY	439					
GAS-OIL RATIO CU FT/BBL	880					
WATER-BBL/DAY	1,694					
PUMPING OR FLOWING	Pumping					
INITIAL SHUT-IN PRESSURE						
CHOKE SIZE						
FLOW TUBING PRESSURE						

A record of the formations drilled through, and pertinent remarks are presented on the reverse. I declare that I have knowledge of the contents of this report and am authorized by my organization to make this report, which was prepared by me or under my supervision and direction, with the data and facts stated herein to be true, correct, and complete to the best of my knowledge and belief.

Signature: Andrew Blaney  
NAME (PRINT OR TYPE) Andrew Blaney  
DATE 12/21/2021 PHONE NUMBER 405-232-1719  
ADDRESS 4335 N. Classen Blvd.; Suite 200 CITY Oklahoma City STATE OK ZIP 73118  
EMAIL ADDRESS andrewb@dashoperating.com

PLEASE TYPE OR USE BLACK INK ONLY  
FORMATION RECORD

Give formation names and tops, if available, or descriptions and thickness of formations drilled through. Show intervals cored or driftestam tested.

NAMES OF FORMATIONS	TOP
Oswego	5160

LEASE NAME \_\_\_\_\_ WELL NO. \_\_\_\_\_

FOR COMMISSION USE ONLY	
ITD on file <input type="checkbox"/> YES <input type="checkbox"/> NO	
APPROVED _____ DISAPPROVED _____	2) Reject Codes
_____	
_____	
_____	
_____	

Were open hole logs run?	<input type="radio"/> yes <input checked="" type="radio"/> no
Date Last log was run	_____
Was CO <sub>2</sub> encountered?	<input type="radio"/> yes <input checked="" type="radio"/> no at what depths? _____
Was H <sub>2</sub> S encountered?	<input type="radio"/> yes <input checked="" type="radio"/> no at what depths? _____
Were unusual drilling circumstances encountered? If yes, briefly explain below	<input type="radio"/> yes <input checked="" type="radio"/> no

Other remarks: \_\_\_\_\_

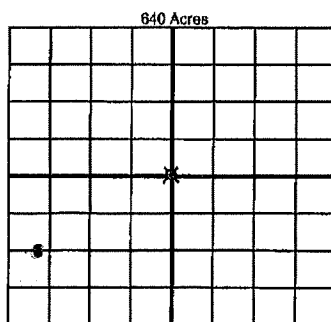
\_\_\_\_\_

\_\_\_\_\_

\_\_\_\_\_

\_\_\_\_\_

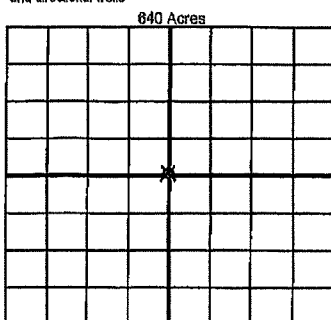
\_\_\_\_\_



If more than three drainholes are proposed, attach a separate sheet indicating the necessary information.

Direction must be stated in degrees azimuth. Please note, the horizontal drainhole and its end point must be located within the boundaries of the lease or spacing unit.

Directional surveys are required for all drainholes and directional wells



BOTTOM HOLE LOCATION FOR DIRECTIONAL HOLE

SEC	TWP	RGE	COUNTY
1/4	1/4	1/4	1/4
Measured Total Depth		True Vertical Depth	Feet From 1/4 Sec Lines BHL From Lease, Unit, or Property Line:

BOTTOM HOLE LOCATION FOR HORIZONTAL HOLE: (LATERALS)

LATERAL #1			
SEC	TWP	RGE	COUNTY
24	18N	3W	Logan
NE 1/4	NW 1/4	SW 1/4	SW 1/4
Depth of Deviation	4,385'	Radius of Turn	1,346'
Measured Total Depth	11,906'	True Vertical Depth	5,199'
Feet From 1/4 Sec Lines		FSL 1,320'	FWL 337'
Direction		354 North	Total Length 6,176'
BHL From Lease, Unit, or Property Line:		337	1,320'

LATERAL #2			
SEC	TWP	RGE	COUNTY
1/4	1/4	1/4	1/4
Depth of Deviation	Radius of Turn	Direction	Total Length
Measured Total Depth	True Vertical Depth	BHL From Lease, Unit, or Property Line:	

LATERAL #3			
SEC	TWP	RGE	COUNTY
1/4	1/4	1/4	1/4
Depth of Deviation	Radius of Turn	Direction	Total Length
Measured Total Depth	True Vertical Depth	BHL From Lease, Unit, or Property Line:	