

Oklahoma Corporation Commission
Oil & Gas Conservation Division
Post Office Box 52000
Oklahoma City, Oklahoma 73152-2000
Rule 165: 10-3-25

Form 1002A

API No.: 35087222360000

Completion Report

Spud Date: May 08, 2019

OTC Prod. Unit No.: 087-225803-0-0000

Drilling Finished Date: May 21, 2019

1st Prod Date: June 25, 2019

Completion Date: June 25, 2019

Drill Type: HORIZONTAL HOLE

Min Gas Allowable: Yes

Well Name: STURGELL 1720 5H

Purchaser/Measurer: ENABLE GATHERING &
PROCESSING

First Sales Date: 06/25/2019

Location: MCCLAIN 20 7N 4W
SE NW SW SE
881 FSL 2075 FEL of 1/4 SEC
Derrick Elevation: 0 Ground Elevation: 1288

Operator: EOG RESOURCES INC 16231

3817 NW EXPRESSWAY STE 500
OKLAHOMA CITY, OK 73112-1483

Completion Type		Location Exception		Increased Density	
X	Single Zone	Order No		Order No	
	Multiple Zone	700569		684419	
	Commingle				

Casing and Cement							
Type	Size	Weight	Grade	Feet	PSI	SAX	Top of CMT
SURFACE	13 3/8	48	J-55	500		605	SURFACE
INTERMEDIATE	9 5/8	40	J-55	4876		825	SURFACE
PRODUCTION	5 1/2	20	P-110	20595		2575	9245

Liner								
Type	Size	Weight	Grade	Length	PSI	SAX	Top Depth	Bottom Depth
There are no Liner records to display.								

Total Depth: 20603

Packer	
Depth	Brand & Type
There are no Packer records to display.	

Plug	
Depth	Plug Type
There are no Plug records to display.	

Initial Test Data

Test Date	Formation	Oil BBL/Day	Oil-Gravity (API)	Gas MCF/Day	Gas-Oil Ratio Cu FT/BBL	Water BBL/Day	Pumpin or Flowing	Initial Shut-In Pressure	Choke Size	Flow Tubing Pressure
Jun 28, 2019	MISSISSIPPIAN	319	40	126	395	1367	FLOWING	1900	128	319

Completion and Test Data by Producing Formation

Formation Name: MISSISSIPPIAN

Code: 359MSSP

Class: OIL

Spacing Orders

Order No	Unit Size
671043	640
671787	640
677769	640
677921	640
700770	MULTIUNIT

Perforated Intervals

From	To
10744	20502

Acid Volumes

5,000 GALLONS TOTAL ACID

Fracture Treatments

15,242,976 GALLONS TOTAL FLUID, 24,406,264 POUNDS TOTAL PROPPANT
--

Formation	Top
MISSISSIPPIAN	10510

Were open hole logs run? Yes

Date last log run:

Were unusual drilling circumstances encountered? No

Explanation:

Other Remarks

OCC - THIS DOCUMENT IS ACCEPTED BASED ON THE DATA SUBMITTED NEITHER THE FINAL LOCATION EXCEPTION NOR THE FINAL MULTIUNIT ORDERS HAVE BEEN ISSUED.

Lateral Holes

Sec: 17 TWP: 7N RGE: 4W County: MCCLAIN

NE NW NW NE

176 FNL 2092 FEL of 1/4 SEC

Depth of Deviation: 10172 Radius of Turn: 655 Direction: 355 Total Length: 9776

Measured Total Depth: 20603 True Vertical Depth: 10284 End Pt. Location From Release, Unit or Property Line: 176

FOR COMMISSION USE ONLY

1143596

Status: Accepted

RECEIVED

Form 1002A
Rev. 2009

JUL 25 2019

OKLAHOMA CORPORATION
COMMISSION

API NO. 087-22236
OTC PROD. UNIT NO. 087-225803

PLEASE TYPE OR USE BLACK INK ONLY
NOTE:

Attach copy of original 1002A
if recompletion or reentry.

OKLAHOMA CORPORATION COMMISSION
Oil & Gas Conservation Division
Post Office Box 52000
Oklahoma City, Oklahoma 73152-2000
Rule 165:10-3-25

☒ ORIGINAL
☐ AMENDED (Reason) _____

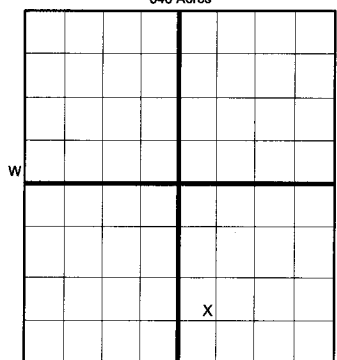
COMPLETION REPORT

TYPE OF DRILLING OPERATION

☐ STRAIGHT HOLE ☐ DIRECTIONAL HOLE ☒ HORIZONTAL HOLE
☐ SERVICE WELL

If directional or horizontal, see reverse for bottom hole location.

COUNTY	McClain	SEC	20	TWP	7N	RGE	4W	SPUD DATE	5/8/2019
LEASE NAME	STURGELL 1720			WELL NO.	5H			DRLG FINISHED DATE	5/21/2019
SE 1/4 NW 1/4 SW 1/4 SE 1/4	FSL 1/4 SEC	881	FEL 1/4 SEC	2,075		DATE OF WELL COMPLETION		6/25/2019	
ELEVATION N Derrick	Ground	1,288	Latitude (if known)		Longitude (if known)		1st PROD DATE	6/25/2019	
OPERATOR NAME	EOG Resources, Inc.			OTC/OCC OPERATOR NO.	16231				
ADDRESS	3817 NW Expressway, Suite 500								
CITY	Oklahoma City	STATE	OK	ZIP	73112				



COMPLETION TYPE

☒ SINGLE ZONE
☐ MULTIPLE ZONE
Application Date _____
COMINGLED Application Date _____
LOCATION EXCEPTION ORDER *700581697200*
INCREASED DENSITY ORDER NO. 684419

CASING & CEMENT (Form 1002C must be attached)

TYPE	SIZE	WEIGHT	GRADE	FEET	PSI	SAX	TOP OF CMT
CONDUCTOR							
SURFACE	13 - 3/8	48	J-55	500		605	SURFACE
INTERMEDIATE	9 - 5/8	40	J-55	4,876		825	<i>surface</i>
PRODUCTION	5 - 1/2	20	P-110	20,595		2,575	9,245
LINER							
						TOTAL DEPTH	20,603

PACKER @ _____ BRAND & TYPE _____ PLUG @ _____ TYPE _____ PLUG @ _____ TYPE _____
PACKER @ _____ BRAND & TYPE _____ PLUG @ _____ TYPE _____ PLUG @ _____ TYPE _____

COMPLETION & TEST DATA BY PRODUCING FORMATION *359 M55P*

FORMATION	MISSISSIPPIAN						
SPACING & SPACING ORDER NUMBER	640/671043, 671787, 677769, 677921, MU 697205 <i>700770 I.D.</i>						<i>Reported To FracFocus</i>
CLASS: Oil, Gas, Dry, Inj, Disp, Comm Disp, Svc	OIL						
PERFORATED INTERVALS	10,744 - 20,502						
ACID/VOLUME	TOTAL ACID - 5,000 GALS						
FRACTURE TREATMENT (Fluids/Prop Amounts)	TOTAL FLUID - 15,242,976 GALS TOTAL PROP - 24,406,264 LBS						

Min Gas Allowable (165:10-17-7)

Gas Purchaser/Measurer

Enable Gathering & Processing

☒

OR

First Sales Date

6/25/2019

INITIAL TEST DATA

INITIAL TEST DATE	6/28/2019						
OIL-BBL/DAY	319						
OIL-GRAVITY (API)	40						
GAS-MCF/DAY	126						
GAS-OIL RATIO CU FT/BBL	395						
WATER-BBL/DAY	1,367						
PUMPING OR FLOWING	FLOWING						
INITIAL SHUT-IN PRESSURE	1,900						
CHOKE SIZE	128						
FLOW TUBING PRESSURE	319						

AS SUBMITTED

Record of the formations drilled through, and pertinent remarks are presented on the reverse. I declare that I have knowledge of the contents of this report and am authorized by my organization to make this report, which was prepared by me or under my supervision and direction, with the data and facts stated herein to be true, correct, and complete to the best of my knowledge and belief.

Joni Reeder
SIGNATURE

Joni Reeder
NAME (PRINT OR TYPE)

7/25/2019
DATE

405-246-3100
PHONE NUMBER

3817 NW Expressway, Suite 500
ADDRESS

Oklahoma City
CITY

OK
STATE

73112
ZIP

joni_reeder@eogresources.com
EMAIL ADDRESS

PLEASE TYPE OR USE BLACK INK ONLY
FORMATION RECORD

Give formation names and tops, if available, or descriptions and thickness of formations drilled through. Show intervals cored or drillstem tested.

LEASE NAME

STURGELL 1720

WELL NO.

5H

NAMES OF FORMATIONS	TOP
MISSISSIPPIAN MD	10,510

FOR COMMISSION USE ONLY

ITD on file ☐ YES ☐ NO

APPROVED _____ DISAPPROVED _____

2) Reject Codes

Were open hole logs run? ☒ yes ☐ no

Date Last log was run _____ N/A

Was CO₂ encountered? ☐ yes ☒ no at what depths? _____

Was H₂S encountered? ☐ yes ☒ no at what depths? _____

Were unusual drilling circumstances encountered? ☐ yes ☒ no

If yes, briefly explain below:

Other remarks:

640 Acres

If more than three drainholes are proposed, attach a separate sheet indicating the necessary information.

Direction must be stated in degrees azimuth.

Please note, the horizontal drainhole and its end point must be located within the boundaries of the lease or spacing unit.

Directional surveys are required for all drainholes and directional wells.

640 Acres

BOTTOM HOLE LOCATION FOR DIRECTIONAL HOLE

SEC	TWP	RGE	COUNTY
Spot Location	1/4	1/4	1/4
Measured Total Depth	True Vertical Depth	BHL From Lease, Unit, or Property Line:	

BOTTOM HOLE LOCATION FOR HORIZONTAL HOLE: (LATERALS)

LATERAL #1

SEC	TWP	RGE	COUNTY
17	7N	4W	MCCLAIN
Spot Location	NE 1/4	NW 1/4	NE 1/4
Depth of Deviation	10,172	Radius of Turn	655
Measured Total Depth	20,603	True Vertical Depth	10,284
Feet From 1/4 Sec Lines	FNL 176	FEL 2,092	
Direction	355	Total Length	9,776
BHL From Lease, Unit, or Property Line:	176		

LATERAL #2

SEC	TWP	RGE	COUNTY
Spot Location	1/4	1/4	1/4
Depth of Deviation	Radius of Turn	Direction	Total Length
Measured Total Depth	True Vertical Depth	BHL From Lease, Unit, or Property Line:	

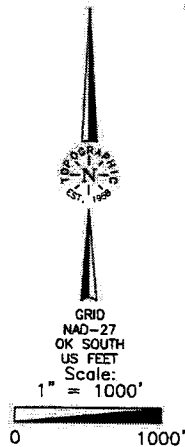
LATERAL #3

SEC	TWP	RGE	COUNTY
Spot Location	1/4	1/4	1/4
Depth of Deviation	Radius of Turn	Direction	Total Length
Measured Total Depth	True Vertical Depth	BHL From Lease, Unit, or Property Line:	

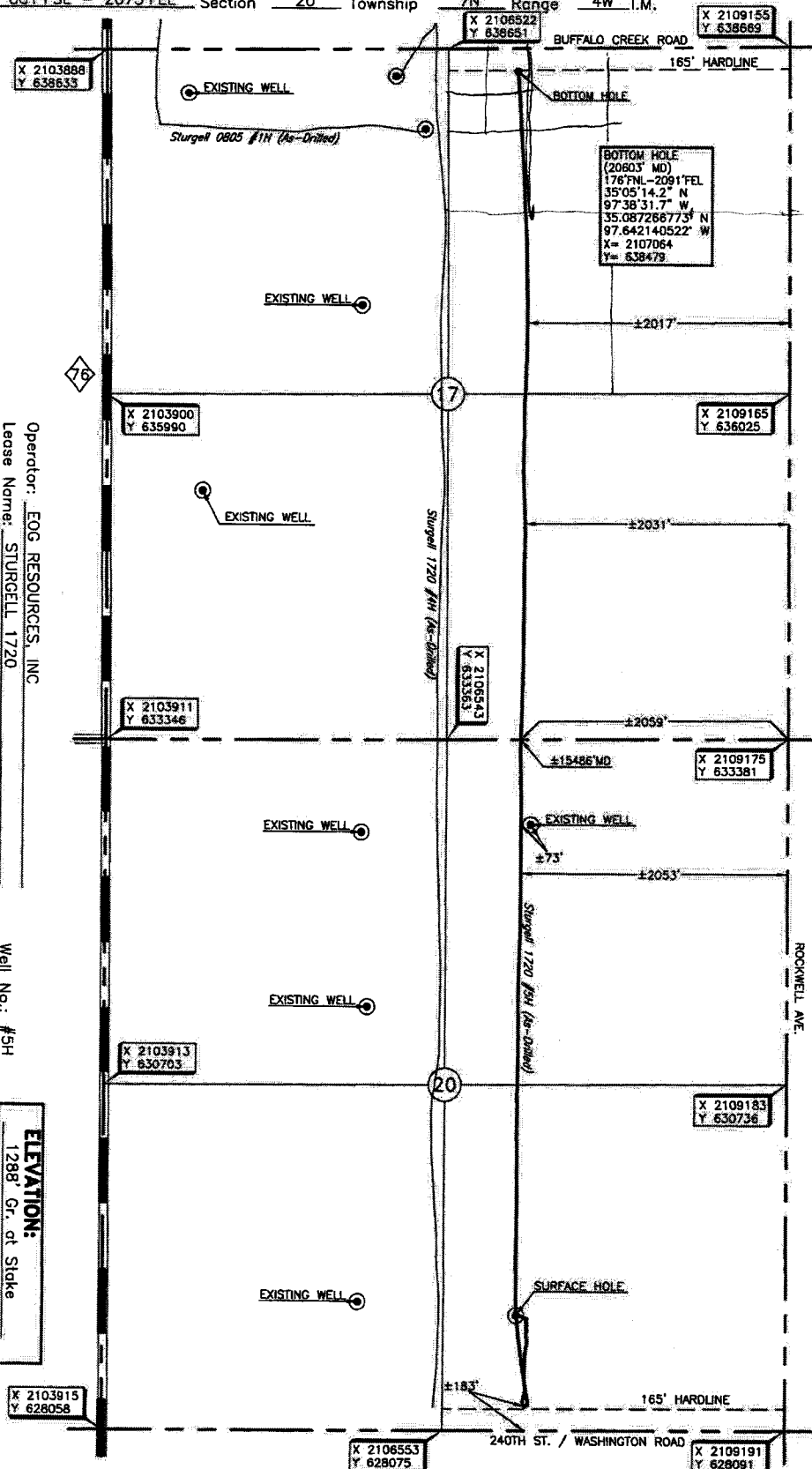
McCLAIN

County, Oklahoma

881' FSL - 2075' FEL Section 20 Township 7N Range 4W I.M.



Operator: EOG RESOURCES, INC
Lease Name: STURCELL 1720
Topography & Vegetation Loc. fell in pasture; pod being built.
Good Drill Site? Yes
Best Accessibility to Location From the South off county road.
Distance & Direction From the Jct. of St. Hwy. 76 and St. Hwy 39 West of Dibble, OK, go ± 1.2 mi. North on St. Hwy. 76, then ± 1 mi. East to the SE corner of Sec. 20, 7N - 4W.
Reference Stakes or Alternate Location
Stakes Set None
Well No.: #5H
ELEVATION:
1288' Gr. at Stake



BAL
NE NW NW NE

DATUM: NAD-27
LAT: 35°03'40.0" N
LONG: 97°38'31.5" W
LAT: 35.061109728° N
LONG: 97.642090170° W
STATE PLANE
COORDINATES (US FEET):
ZONE: OK SOUTH
X: 2107113
Y: 628959

Project # 125079 Date of Drawing: May 21, 2019
Date Staked: Mar. 01, 2018 ST

FINAL AS-DRILLED PLAT

AS-DRILLED INFORMATION
FURNISHED BY EOG RESOURCES, INC.