

Oklahoma Corporation Commission
Oil & Gas Conservation Division
Post Office Box 52000
Oklahoma City, Oklahoma 73152-2000
Rule 165: 10-3-25

Form 1002A

API No.: 35029213870000

Completion Report

Spud Date: November 03, 2018

OTC Prod. Unit No.: 029-225782-0-0000

Drilling Finished Date: December 02, 2018

1st Prod Date: May 09, 2019

Completion Date: April 24, 2019

Drill Type: HORIZONTAL HOLE

Min Gas Allowable: Yes

Well Name: KANE 1-1/12H

Purchaser/Measurer: SOUTHWEST ENERGY LP

Location: COAL 6 2N 9E
NE NW SW SW
1041 FSL 540 FWL of 1/4 SEC
Latitude: 34.66830102 Longitude: -96.40443599
Derrick Elevation: 733 Ground Elevation: 708

First Sales Date: 05/09/2019

Operator: CANYON CREEK ENERGY OPERATING LLC 23443

2431 E 61ST ST STE 400
TULSA, OK 74136-1237

Completion Type		Location Exception		Increased Density	
X	Single Zone	Order No		Order No	
	Multiple Zone	692951		N/A	
	Commingled				

Casing and Cement							
Type	Size	Weight	Grade	Feet	PSI	SAX	Top of CMT
SURFACE	9 5/8	36	J-55	1009		290	SURFACE
PRODUCTION	5 1/2	20	P-110	13098		1485	3589

Liner								
Type	Size	Weight	Grade	Length	PSI	SAX	Top Depth	Bottom Depth
There are no Liner records to display.								

Total Depth: 13125

Packer	
Depth	Brand & Type
There are no Packer records to display.	

Plug	
Depth	Plug Type
There are no Plug records to display.	

Initial Test Data

Test Date	Formation	Oil BBL/Day	Oil-Gravity (API)	Gas MCF/Day	Gas-Oil Ratio Cu FT/BBL	Water BBL/Day	Pumpin or Flowing	Initial Shut-In Pressure	Choke Size	Flow Tubing Pressure
May 22, 2019	WOODFORD	158	43	1905	12057	917	FLOWING	435	F. O.	160

Completion and Test Data by Producing Formation			
Formation Name: WOODFORD		Code: 319WDFD	
		Class: OIL	

Spacing Orders	
Order No	Unit Size
679015	640
679014	640
692124	MULTIUNIT

Perforated Intervals	
From	To
7463	12978

Acid Volumes	
10,584 GALLONS 15% HCL	

Fracture Treatments	
7,202,854 POUNDS SAND, 215,278 BARRELS FRAC FLUID	

Formation	Top
WOODFORD	6972

Were open hole logs run? No

Date last log run:

Were unusual drilling circumstances encountered? No

Explanation:

Other Remarks
OCC - OPERATOR CHANGING WELL# TO 1-1-12H. OCC - THIS DOCUMENT IS ACCEPTED BASED ON THE DATA SUBMITTED NEITHER THE FINAL LOCATION EXCEPTION NOR THE FINAL MULTIUNIT ORDERS HAVE BEEN ISSUED.

Lateral Holes
Sec: 12 TWP: 2N RGE: 8E County: COAL SW SE SE SE 21 FSL 670 FEL of 1/4 SEC Depth of Deviation: 6495 Radius of Turn: 788 Direction: 180 Total Length: 5872 Measured Total Depth: 13125 True Vertical Depth: 6404 End Pt. Location From Release, Unit or Property Line: 21

FOR COMMISSION USE ONLY	
Status: Accepted	1143616

API NO. 029 21387
OTC PROD. UNIT NO. 029-225781-0-0000

PLEASE TYPE OR USE BLACK INK ONLY

NOTE:

Attach copy of original 1002A if recompletion or reentry.

OKLAHOMA CORPORATION COMMISSION

Oil & Gas Conservation Division
Post Office Box 52000
Oklahoma City, Oklahoma 73152-2000
Rule 165:10-3-25

RECEIVED

AUG 05 2019

Oklahoma Corporation
Commission

Form 1002A
Rev. 2009

☒ ORIGINAL
☐ AMENDED (Reason)

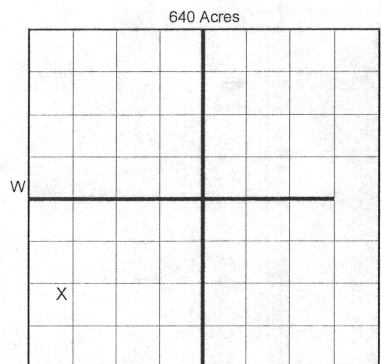
COMPLETION REPORT

TYPE OF DRILLING OPERATION

☐ STRAIGHT HOLE ☐ DIRECTIONAL HOLE ☒ HORIZONTAL HOLE
☐ SERVICE WELL

If directional or horizontal, see reverse for bottom hole location.

COUNTY	Coal	SEC	6	TWP	2N	RGE	9E	SPUD DATE	11/3/2018
LEASE NAME	Kane			WELL NO.	1-1-12H			DRLG FINISHED DATE	12/2/2018
NE 1/4 NW 1/4 SW 1/4 SW 1/4	FSL 1041			FWL OF 1/4 SEC	540			DATE OF WELL COMPLETION	4/24/2019
ELEVATION Derrick FL	733	Ground	708	Latitude (if known)	34.66830102			Longitude (if known)	-96.40443599
OPERATOR NAME	Canyon Creek Energy Operating LLC			OTC OCC OPERATOR NO.	23443				
ADDRESS	2431 E. 61st St Suite 400								
CITY	Tulsa			STATE	OK		ZIP	74136	



COMPLETION TYPE

<input checked="" type="checkbox"/> SINGLE ZONE	
<input type="checkbox"/> MULTIPLE ZONE	
Application Date	
COMINGLED	
Application Date	
LOCATION	692951 I.D.
EXCEPTION ORDER	
INCREASED DENSITY	
ORDER NO.	N/A

CASING & CEMENT (Form 1002C must be attached)

TYPE	SIZE	WEIGHT	GRADE	FEET	PSI	SAX	TOP OF CMT
CONDUCTOR							
SURFACE	9 5/8"	36#	J55	1009		290	Surface
INTERMEDIATE							
PRODUCTION	5 1/2"	20#	P110	13,098		1485	3589
LINER							
						TOTAL DEPTH	13,125

PACKER @ _____ BRAND & TYPE _____ PLUG @ _____ TYPE _____ PLUG @ _____ TYPE _____
PACKER @ _____ BRAND & TYPE _____ PLUG @ _____ TYPE _____ PLUG @ _____ TYPE _____

COMPLETION & TEST DATA BY PRODUCING FORMATION

FORMATION	Woodford	319 WDFD			
SPACING & SPACING ORDER NUMBER	640/679015	679014 (640)	692124 (Multistage)		Reported to Free Fluids
CLASS: Oil, Gas, Dry, Inj, Disp, Comm Disp, Svc	Gas Oil	per GOR			
PERFORATED INTERVALS	7463-12978				
ACID/VOLUME	10,584 gals/15% HCl				
FRACTURE TREATMENT (Fluids/Prop Amounts)	7,202,854 #'s sand				
	215,278 bbls Free Fluid				

Min Gas Allowable (165:10-17-7)

Gas Purchaser/Measurer

Southwest Energy, LP



OR

First Sales Date

5/9/2019

INITIAL TEST DATA

Oil Allowable (165:10-13-3)

INITIAL TEST DATE	5/22/2019				
OIL-BBL/DAY	158				
OIL-GRAVITY (API)	43				
GAS-MCF/DAY	1905				
GAS-OIL RATIO CU FT/BBL	12,057				
WATER-BBL/DAY	917				
PUMPING OR FLOWING	Flowing				
INITIAL SHUT-IN PRESSURE	435				
CHOKE SIZE	F.O.				
FLOW TUBING PRESSURE	160				

AS SUBMITTED

A record of the formations drilled through, and pertinent remarks are presented on the reverse. I declare that I have knowledge of the contents of this report and am authorized by my organization to make this report, which was prepared by me or under my supervision and direction, with the data and facts stated herein to be true, correct, and complete to the best of my knowledge and belief.

C. Daniel Jacobs	C. Daniel Jacobs	7/31/2019	918-561-6737
SIGNATURE	NAME (PRINT OR TYPE)	DATE	PHONE NUMBER
2431 E. 61st ST. SUITE400	TULSA OK 74136		djacobs@cceok.com
ADDRESS	CITY STATE ZIP	EMAIL ADDRESS	

PLEASE TYPE OR USE BLACK INK ONLY

FORMATION RECORD

Give formation names and tops, if available, or descriptions and thickness of formations drilled through. Show intervals cored or drillstem tested.

NAMES OF FORMATIONS	TOP
Woodford	6972 MD

LEASE NAME

Kane

WELL NO.

1-1/12H

FOR COMMISSION USE ONLY

ITD on file ☐ YES ☐ NO

APPROVED DISAPPROVED

2) Reject Codes

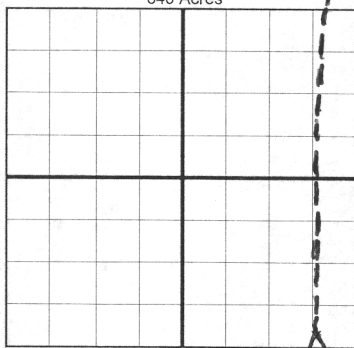
Were open hole logs run? ☐ yes ☒ no

Date Last log was run

Was CO₂ encountered? ☐ yes ☒ no at what depths?Was H₂S encountered? ☐ yes ☒ no at what depths?Were unusual drilling circumstances encountered? ☐ yes ☒ no
If yes, briefly explain below

Other remarks:

640 Acres

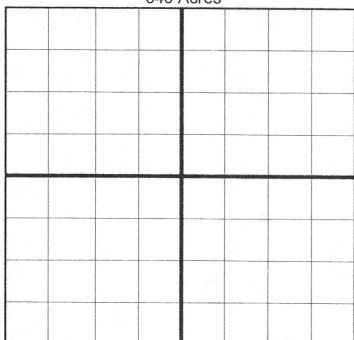


If more than three drainholes are proposed, attach a separate sheet indicating the necessary information.

Direction must be stated in degrees azimuth. Please note, the horizontal drainhole and its end point must be located within the boundaries of the lease or spacing unit.

Directional surveys are required for all drainholes and directional wells.

640 Acres



BOTTOM HOLE LOCATION FOR DIRECTIONAL HOLE

SEC	TWP	RGE	COUNTY			
Spot Location	1/4	1/4	1/4	1/4	Feet From 1/4 Sec Lines	FSL
Measured Total Depth		True Vertical Depth			BHL From Lease, Unit, or Property Line:	FWL

BOTTOM HOLE LOCATION FOR HORIZONTAL HOLE: (LATERALS)

LATERAL #1

SEC	TWP	RGE	COUNTY	Coal
12	2N	BE 9E		
Spot Location	SW 1/4	SE 1/4	SE 1/4	SE 1/4
Depth of Deviation	6,495	Radius of Turn	788	Direction 180
Measured Total Depth	13,125	True Vertical Depth	6,404	Total Length 5,872
				BHL From Lease, Unit, or Property Line: 21' FSL 670' FEL

LATERAL #2

SEC	TWP	RGE	COUNTY			
Spot Location	1/4	1/4	1/4	1/4	Feet From 1/4 Sec Lines	FSL
Depth of Deviation		Radius of Turn			Direction	Total Length
Measured Total Depth		True Vertical Depth			BHL From Lease, Unit, or Property Line:	

LATERAL #3

SEC	TWP	RGE	COUNTY			
Spot Location	1/4	1/4	1/4	1/4	Feet From 1/4 Sec Lines	FSL
Depth of Deviation		Radius of Turn			Direction	Total Length
Measured Total Depth		True Vertical Depth			BHL From Lease, Unit, or Property Line:	