

Oklahoma Corporation Commission  
Oil & Gas Conservation Division  
Post Office Box 52000  
Oklahoma City, Oklahoma 73152-2000  
Rule 165: 10-3-25

Form 1002A

API No.: 35109224150002

**Completion Report**

Spud Date: February 24, 2014

OTC Prod. Unit No.:

Drilling Finished Date: March 08, 2014

**Amended**

1st Prod Date: April 10, 2014

Amend Reason: RECOMPLETION / CORRECT BOTTOM HOLE LOCATION

Completion Date: April 10, 2014

Recomplete Date: May 05, 2021

**Drill Type: DIRECTIONAL HOLE**

Well Name: OKC SO WILCOX UNIT (VENCL 22) 18-22

Purchaser/Measurer:

Location: OKLAHOMA 31 11N 2W  
SW SE NW SE  
1575 FSL 700 FWL of 1/4 SEC  
Derrick Elevation: 1312 Ground Elevation: 1296

First Sales Date:

Operator: STEPHENS & JOHNSON OPERATING CO 19113  
PO BOX 2249  
811 6TH ST STE 300  
WICHITA FALLS, TX 76307-2249

Completion Type		Location Exception		Increased Density	
X	Single Zone	Order No		Order No	
	Multiple Zone	There are no Location Exception records to display.		There are no Increased Density records to display.	
	Commingled				

Casing and Cement							
Type	Size	Weight	Grade	Feet	PSI	SAX	Top of CMT
CONDUCTOR	16	40	J-55	45		5	SURFACE
SURFACE	8 5/8	24	J-55	1301		650	SURFACE
PRODUCTION	5 1/2	17	J-55	7005		1150	SURFACE

Liner								
Type	Size	Weight	Grade	Length	PSI	SAX	Top Depth	Bottom Depth
There are no Liner records to display.								

**Total Depth: 7005**

Packer		Plug	
Depth	Brand & Type	Depth	Plug Type
There are no Packer records to display.		6690	RBP

Initial Test Data
-------------------

Test Date	Formation	Oil BBL/Day	Oil-Gravity (API)	Gas MCF/Day	Gas-Oil Ratio Cu FT/BBL	Water BBL/Day	Pumpin or Flowing	Initial Shut-In Pressure	Choke Size	Flow Tubing Pressure
May 10, 2021	WILCOX	45	40			300	PUMPING	30		

Completion and Test Data by Producing Formation

Formation Name: WILCOX

Code: 202WLCX

Class: OIL

Spacing Orders

Order No	Unit Size
30116	UNIT
30775	UNIT

Perforated Intervals

From	To
6500	6520

Acid Volumes

There are no Acid Volume records to display.

Fracture Treatments

There are no Fracture Treatments records to display.

Formation	Top
WILCOX SAND	6450

Were open hole logs run? Yes

Date last log run: March 08, 2014

Were unusual drilling circumstances encountered? No

Explanation:

Other Remarks

WELL ORIGINALLY COMPLETED AS THE VENCL 22 WELL IN TULIP CREEK. TOP WILCOX SAND @ 6,450', 244' SOUTH AND 544' EAST OF SURFACE LOCATION. OPEN HOLE LOGS ALREADY FILED WITH OCC WITH VENCL 22 COMPLETION FORMS FILED.

Bottom Holes

Sec: 31 TWP: 11N RGE: 2W County: OKLAHOMA

NE NE SW SE

1294 FSL 1254 FWL of 1/4 SEC

Depth of Deviation: 0 Radius of Turn: 0 Direction: 0 Total Length: 0

Measured Total Depth: 7005 True Vertical Depth: 6962 End Pt. Location From Release, Unit or Property Line: 1264

FOR COMMISSION USE ONLY

Status: Accepted

1146468

API NO. 35-10922415  
OTC PROD. 19113-0  
UNIT NO. 19113-0

Oil and Gas Conservation Division  
P.O. Box 52000  
Oklahoma City, OK 73152-2000  
405-522-0577  
OCCCentralProcessing@OCC.OK.GOV



OKLAHOMA  
Corporation  
Commission

Form 1002A  
Rev. 2020

ORIGINAL  
AMENDED (Reason)

Recompletion / Correct Bottom Hole Location

Rule 165:10-3-25

COMPLETION REPORT

TYPE OF DRILLING OPERATION

☐ STRAIGHT HOLE ☒ DIRECTIONAL HOLE ☐ HORIZONTAL HOLE  
☐ SERVICE WELL

If directional or horizontal, see reverse for bottom hole location.

COUNTY OKLAHOMA SEC 31 TWP 11N RGE 2W  
LEASE NAME OKC SO WILCOX UNIT WELL NO. 18-22  
SW 1/4 SE 1/4 NW 1/4 SE 1/4 FEL 1575 FWL 700  
ELEVATION Derrick FL 1312 Ground 1296 Latitude Longitude  
OPERATOR NAME STEPHENS & JOHNSON OPERATING CO OTC / OCC OPERATOR NO. 19113-0  
ADDRESS P O BOX 2249  
CITY WICHITA FALLS STATE TX ZIP 76307

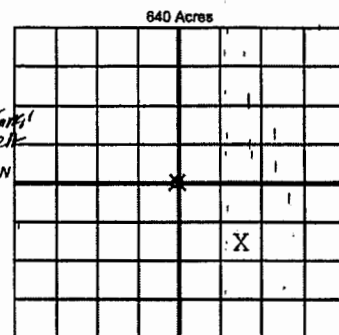
SPUD DATE 2-24-14

DRLG FINISHED DATE 3-8-14

DATE OF WELL COMPLETION 4-10-14

1st PROD DATE 4-10-14

RECOMP DATE 5/5/2021



COMPLETION TYPE

☒ SINGLE ZONE  
☐ MULTIPLE ZONE  
☐ COMMINGLED  
LOCATION EXCEPTION ORDER NO.  
MULTIUNIT ORDER NO.  
INCREASED DENSITY ORDER NO.

CASING & CEMENT (Attach Form 1002C)

TYPE	SIZE	WEIGHT	GRADE	FEET	PSI	SAX	TOP OF CMT
CONDUCTOR	16"	40	J-55	45'		5.3 YD	SURF
SURFACE	8 5/8"	24	J-55	1301'		650	SURF
INTERMEDIATE							
PRODUCTION	5 1/2"	17	J-55	7005'		1150	SURF
LINER							

PACKER @ BRAND & TYPE RBP PLUG @ 6990 TYPE RBP PLUG @ TYPE TOTAL DEPTH 7005

COMPLETION & TEST DATA BY PRODUCING FORMATION

FORMATION	WILCOX SB				No Frac
SPACING & SPACING ORDER NUMBER	30116 (unit)	30775 (unit)			
CLASS: Oil, Gas, Dry, Inj, Disp, Comm Disp, Svc	Oil				
PERFORATED INTERVALS	6500-20'				
ACID/VOLUME					
FRACTURE TREATMENT (Fluids/Prop Amounts)					

RECEIVED

MAY 14 2021

OKLAHOMA CORPORATION  
COMMISSION

Min Gas Allowable (165:10-17-7)

Purchaser/Measurer



OR

First Sales Date

Oil Allowable (165:10-13-3)

INITIAL TEST DATA

INITIAL TEST DATE	5/10/21				
OIL-BBL/DAY	45				
OIL-GRAVITY (API)	40				
GAS-MCF/DAY	0				
GAS-OIL RATIO CU FT/BBL	0				
WATER-BBL/DAY	300				
PUMPING OR FLOWING	PUMPING				
INITIAL SHUT-IN PRESSURE	30				
CHOKE SIZE					
FLOW TUBING PRESSURE	NA				

A record of the formations drilled through and pertinent remarks are presented on the reverse. I declare that I have knowledge of the contents of this report and am authorized by my organization to make this report, which was prepared by me or under my supervision and direction, with the data and facts stated herein to be true, correct, and complete to the best of my knowledge and belief.

SIGNATURE  
P O Box 2249

BOB GILMORE  
NAME (PRINT OR TYPE)  
Wichita Falls TX 76307  
CITY STATE ZIP

5/11/21  
DATE PHONE NUMBER  
bgilmore@sjoc.net  
EMAIL ADDRESS

PLEASE TYPE OR USE BLACK INK ONLY  
FORMATION RECORD

Give formation names and tops, if available, or descriptions and thickness of formations drilled through. Show intervals cored or drillstem tested.

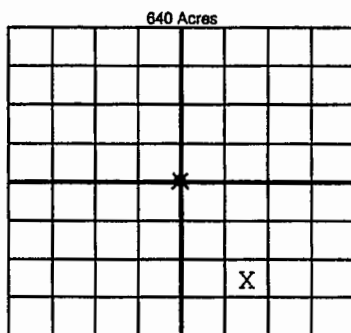
NAMES OF FORMATIONS	TOP
WILCOX SD	6450

LEASE NAME OKC SO WILCOX UNIT WELL NO. 18-22

FOR COMMISSION USE ONLY	
ITD on file <input type="checkbox"/> YES <input type="checkbox"/> NO	
APPROVED _____	DISAPPROVED _____
2) Reject Codes _____	

Were open hole logs run?	<input checked="" type="radio"/> yes <input type="radio"/> no
Date Last log was run	3-8-2014
Was CO <sub>2</sub> encountered?	<input type="radio"/> yes <input checked="" type="radio"/> no at what depths? _____
Was H <sub>2</sub> S encountered?	<input type="radio"/> yes <input checked="" type="radio"/> no at what depths? _____
Were unusual drilling circumstances encountered?	<input type="radio"/> yes <input checked="" type="radio"/> no
If yes, briefly explain below _____	

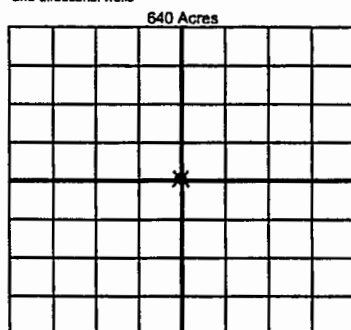
Other remarks: Well originally completed as the Venc No.22 well in Tulip Creek. Top Wilcox Sd @ 6450', 244' south and 544' east of surface location open hole logs already filed with OCC when Venc No.22 completion forms filed.



If more than three drainholes are proposed, attach a separate sheet indicating the necessary information.

Direction must be stated in degrees azimuth. Please note, the horizontal drainhole and its end point must be located within the boundaries of the lease or spacing unit.

Directional surveys are required for all drainholes and directional wells



BOTTOM HOLE LOCATION FOR DIRECTIONAL HOLE

SEC 31	TWP 11N	RGE 2W	COUNTY OKLAHOMA
NE 1/4	NE 1/4	SW 1/4	SE 1/4
Measured Total Depth 7005		True Vertical Depth 6962	
Feet From 1/4 Sec Lines		FSL 1294	PWL 1254
BHL From Lease, Unit, or Property Line:		1264'	

BOTTOM HOLE LOCATION FOR HORIZONTAL HOLE: (LATERALS)

LATERAL #1			
SEC	TWP	RGE	COUNTY
1/4	1/4	1/4	1/4
Feet From 1/4 Sec Lines			
Depth of Deviation	Radius of Turn	Direction	Total Length
Measured Total Depth	True Vertical Depth	BHL From Lease, Unit, or Property Line:	

LATERAL #2			
SEC	TWP	RGE	COUNTY
1/4	1/4	1/4	1/4
Feet From 1/4 Sec Lines			
Depth of Deviation	Radius of Turn	Direction	Total Length
Measured Total Depth	True Vertical Depth	BHL From Lease, Unit, or Property Line:	

LATERAL #3			
SEC	TWP	RGE	COUNTY
1/4	1/4	1/4	1/4
Feet From 1/4 Sec Lines			
Depth of Deviation	Radius of Turn	Direction	Total Length
Measured Total Depth	True Vertical Depth	BHL From Lease, Unit, or Property Line:	