

Oklahoma Corporation Commission  
Oil & Gas Conservation Division  
Post Office Box 52000  
Oklahoma City, Oklahoma 73152-2000  
Rule 165: 10-3-25

Form 1002A

API No.: 35003352360003

**Completion Report**

Spud Date: October 14, 1957

OTC Prod. Unit No.:

Drilling Finished Date: November 01, 1957

**Amended**

1st Prod Date: February 17, 1958

Amend Reason: TERMINATED INJECTION 7/16/2020

Completion Date: February 19, 1958

Recomplete Date: July 16, 2020

**Drill Type: STRAIGHT HOLE**

Well Name: NE CHEROKEE UNIT 19

Purchaser/Measurer:

Location: ALFALFA 20 27N 10W  
C NE SW  
1980 FSL 1980 FWL of 1/4 SEC  
Derrick Elevation: 0 Ground Elevation: 1156

First Sales Date:

Operator: MT ENERGY LLC 24532  
PO BOX 472  
412 BUTTERFIELD TRAIL  
EDMOND, OK 73003

Completion Type		Location Exception		Increased Density	
X	Single Zone	Order No		Order No	
	Multiple Zone	There are no Location Exception records to display.		There are no Increased Density records to display.	
	Commingled				

Casing and Cement							
Type	Size	Weight	Grade	Feet	PSI	SAX	Top of CMT
SURFACE	8 5/8	24	J-55	358		200	SURFACE
PRODUCTION	4 1/2	9.5	J-55	5261		150	4415

Liner								
Type	Size	Weight	Grade	Length	PSI	SAX	Top Depth	Bottom Depth
There are no Liner records to display.								

**Total Depth: 5262**

Packer		Plug	
Depth	Brand & Type	Depth	Plug Type
5107	BAKER	There are no Plug records to display.	

Initial Test Data										
Test Date	Formation	Oil BBL/Day	Oil-Gravity (API)	Gas MCF/Day	Gas-Oil Ratio Cu FT/BBL	Water BBL/Day	Pumpin or Flowing	Initial Shut-In Pressure	Choke Size	Flow Tubing Pressure
There are no Initial Data records to display.										

Completion and Test Data by Producing Formation			
Formation Name: RED FORK		Code: 404RDFK	Class: DRY
<b>Spacing Orders</b>		<b>Perforated Intervals</b>	
<b>Order No</b>	<b>Unit Size</b>	<b>From</b>	<b>To</b>
There are no Spacing Order records to display.		5155	5165
<b>Acid Volumes</b>		<b>Fracture Treatments</b>	
There are no Acid Volume records to display.		There are no Fracture Treatments records to display.	

Formation	Top
SEE ORIGINAL 1002A	0

Were open hole logs run? No  
Date last log run:  
  
Were unusual drilling circumstances encountered? No  
Explanation:

Other Remarks
OCC - PREVIOUS OPERATOR FILED 1072 TERMINATING WELL FOR INJECTION 7-16-2020.

FOR COMMISSION USE ONLY	
Status: Accepted	1146230

API NO. 35-00335236  
OTC PROD.  
UNIT NO.

Oil and Gas Conservation Division  
P.O. Box 52000  
Oklahoma City, OK 73152-2000  
405-522-0577  
OCCentralProcessing@OCC.OK.GOV



OKLAHOMA  
Corporation  
Commission

Form 1002A  
Rev. 2020



ORIGINAL  
AMENDED (Reason)

*Terminated Injection 7-16-2020*

Rule 165:10-3-25

COMPLETION REPORT

TYPE OF DRILLING OPERATION

☒ STRAIGHT HOLE ☐ DIRECTIONAL HOLE ☐ HORIZONTAL HOLE  
☐ SERVICE WELL

If directional or horizontal, see reverse for bottom hole location.

COUNTY ALFALFA SEC 20 TWP 27N RGE 10W

LEASE NAME NE CHEROKEE UNIT

WELL NO. 19

SPUD DATE 10-14-57

DRLG FINISHED DATE 11-1-57

DATE OF WELL COMPLETION 2-19-58

1st PROD DATE 2-17-58

RECOMP DATE 7-16-2020

ELEVATION Derrick FL Ground 1156

Latitude

Longitude

OPERATOR NAME MT ENERGY LLC

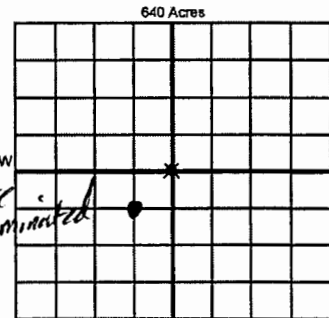
OTC / OCC OPERATOR NO. 24532

ADDRESS 412 BUTTERFIELD TRL

CITY EDMOND

STATE OK

ZIP 73003



LOCATE WELL

COMPLETION TYPE

☒ SINGLE ZONE  
☐ MULTIPLE ZONE  
Application Date  
☐ COMMINGLED  
Application Date  
LOCATION EXCEPTION ORDER NO.  
MULTIUNIT ORDER NO.  
INCREASED DENSITY ORDER NO.

CASING & CEMENT (Attach Form 1002C)

TYPE	SIZE	WEIGHT	GRADE	FEET	PSI	SAX	TOP OF CMT
CONDUCTOR							
SURFACE	8 5/8	24	J55	358'		200	SWF surface
INTERMEDIATE							
PRODUCTION	4 1/2	9.5	J55	5261'		150	4415'
LINER							

PACKER @ 5107 BRAND & TYPE BAKER PLUG @ TYPE PLUG @ TYPE  
PACKER @ BRAND & TYPE PLUG @ TYPE PLUG @ TYPE

TOTAL DEPTH 5262 Per original 1002A

COMPLETION & TEST DATA BY PRODUCING FORMATION

404 RDEK

FORMATION	REDFORK
SPACING & SPACING	
ORDER NUMBER	
CLASS: Oil, Gas, Dry, Inj, Disp, Comm Disp, Svc	1st Dry
PERFORATED INTERVALS	5155-5165 PERMIT # 346840 5-1-90
ACID/VOLUME	
FRACTURE TREATMENT (Fluids/Prop Amounts)	

RECEIVED  
MAR 19 2021  
Oklahoma Corporation Commission

Min Gas Allowable (165:10-17-7)

Purchaser/Measurer



Oil Allowable (165:10-13-3)

First Sales Date

INITIAL TEST DATA

INITIAL TEST DATE	
OIL-BBL/DAY	
OIL-GRAVITY (API)	
GAS-MCF/DAY	
GAS-OIL RATIO CU FT/BBL	
WATER-BBL/DAY	
PUMPING OR FLOWING	
INITIAL SHUT-IN PRESSURE	
CHOKE SIZE	
FLOW TUBING PRESSURE	

A record of the formations drilled through, and pertinent remarks are presented on the reverse. I declare that I have knowledge of the contents of this report and am authorized by my organization to make this report, which was prepared by me or under my supervision and direction, with the data and facts stated herein to be true, correct, and complete to the best of my knowledge and belief.

SIGNATURE PO BOX 472 ADDRESS  
NAME (PRINT OR TYPE) HENNESSEY OK 73742 CITY STATE ZIP  
DATE 3-9-2021  
PHONE NUMBER 405 853-5617  
EMAIL ADDRESS mtenergyllc2020@gmail.com

PLEASE TYPE OR USE BLACK INK ONLY

FORMATION RECORD

Give formation names and tops, if available, or descriptions and thickness of formations drilled through. Show intervals cored or drillstem tested.

NAMES OF FORMATIONS	TOP
see original 1002A	

LEASE NAME \_\_\_\_\_ WELL NO. \_\_\_\_\_

FOR COMMISSION USE ONLY	
ITD on file <input type="checkbox"/> YES <input type="checkbox"/> NO	
APPROVED _____ DISAPPROVED _____	2) Reject Codes
<div></div> <div></div> <div></div> <div></div>	

Were open hole logs run?	<input type="radio"/> yes <input type="radio"/> no
Date Last log was run	_____
Was CO <sub>2</sub> encountered?	<input type="radio"/> yes <input type="radio"/> no at what depths? _____
Was H <sub>2</sub> S encountered?	<input type="radio"/> yes <input type="radio"/> no at what depths? _____
Were unusual drilling circumstances encountered?	<input type="radio"/> yes <input type="radio"/> no
If yes, briefly explain below	

Other remarks: DCC - Previous operator filed 1072 Terminating well 7-16-2020

\_\_\_\_\_

\_\_\_\_\_

\_\_\_\_\_

\_\_\_\_\_

640 Acres


If more than three drainholes are proposed, attach a separate sheet indicating the necessary information.

Direction must be stated in degrees azimuth. Please note, the horizontal drainhole and its end point must be located within the boundaries of the lease or spacing unit.

Directional surveys are required for all drainholes and directional wells

640 Acres


BOTTOM HOLE LOCATION FOR DIRECTIONAL HOLE

SEC	TWP	RGE	COUNTY
1/4	1/4	1/4	1/4
Measured Total Depth		True Vertical Depth	Feet From 1/4 Sec Lines
BHL From Lease, Unit, or Property Line:			

BOTTOM HOLE LOCATION FOR HORIZONTAL HOLE: (LATERALS)

LATERAL #1

SEC	TWP	RGE	COUNTY
1/4	1/4	1/4	1/4
Depth of Deviation		Radius of Turn	Direction
Measured Total Depth		True Vertical Depth	Total Length
BHL From Lease, Unit, or Property Line:			

LATERAL #2

SEC	TWP	RGE	COUNTY
1/4	1/4	1/4	1/4
Depth of Deviation		Radius of Turn	Direction
Measured Total Depth		True Vertical Depth	Total Length
BHL From Lease, Unit, or Property Line:			

LATERAL #3

SEC	TWP	RGE	COUNTY
1/4	1/4	1/4	1/4
Depth of Deviation		Radius of Turn	Direction
Measured Total Depth		True Vertical Depth	Total Length
BHL From Lease, Unit, or Property Line:			