

Oklahoma Corporation Commission
Oil & Gas Conservation Division
Post Office Box 52000
Oklahoma City, Oklahoma 73152-2000
Rule 165: 10-3-25

Form 1002A

API No.: 35047251610000

Completion Report

Spud Date: September 22, 2018

OTC Prod. Unit No.:

Drilling Finished Date: October 11, 2018

1st Prod Date:

Completion Date: January 29, 2019

Drill Type: DIRECTIONAL HOLE

SERVICE WELL

Well Name: SHAFFER 2 SWD

Purchaser/Measurer:

Location: GARFIELD 18 22N 3W
SE SE SW SE
200 FSL 1240 FWL of 1/4 SEC
Derrick Elevation: 0 Ground Elevation: 0

First Sales Date:

Operator: M M ENERGY INC 19118
PO BOX 21904
13927 QUAIL POINTE DR
OKLAHOMA CITY, OK 73156-1904

Completion Type		Location Exception		Increased Density	
	Single Zone	Order No		Order No	
	Multiple Zone	There are no Location Exception records to display.		There are no Increased Density records to display.	
	Commingled				

Casing and Cement							
Type	Size	Weight	Grade	Feet	PSI	SAX	Top of CMT
SURFACE	13 3/8	40	J	373		310	SURFACE
PRODUCTION	9 5/8	43	J	5250		1330	SURFACE

Liner								
Type	Size	Weight	Grade	Length	PSI	SAX	Top Depth	Bottom Depth
LINER	7	26	J	0	0	190	SURFACE	6078

Total Depth: 6078

Packer		Plug	
Depth	Brand & Type	Depth	Plug Type
There are no Packer records to display.		There are no Plug records to display.	

Initial Test Data

Test Date	Formation	Oil BBL/Day	Oil-Gravity (API)	Gas MCF/Day	Gas-Oil Ratio Cu FT/BBL	Water BBL/Day	Pumpin or Flowing	Initial Shut-In Pressure	Choke Size	Flow Tubing Pressure
There are no Initial Data records to display.										
Completion and Test Data by Producing Formation										
Formation Name: WILCOXCode: 202WLCXClass: DISP										
Spacing Orders			Perforated Intervals							
Order No	Unit Size		From				To			
There are no Spacing Order records to display.			5926				6030			
Acid Volumes			Fracture Treatments							
169 GALLONS ACROSS BOTTOM PERFORATIONS, 800 BARRELS SALT WATER WITH 10,000 GALLONS ACID			There are no Fracture Treatments records to display.							
Formation Name: MISSISSIPPI CHATCode: 401MSSCTClass: DISP										
Spacing Orders			Perforated Intervals							
Order No	Unit Size		From				To			
There are no Spacing Order records to display.			5350				5640			
Acid Volumes			Fracture Treatments							
169 GALLONS ACROSS BOTTOM PERFORATIONS, 2,670 BARRELS SALT WATER WITH 825 BARRELS ACID WATER			There are no Fracture Treatments records to display.							
Formation Name: LAYTONCode: 405LYTNClass: DISP										
Spacing Orders			Perforated Intervals							
Order No	Unit Size		From				To			
There are no Spacing Order records to display.			4250				4389			
Acid Volumes			Fracture Treatments							
169 GALLONS ACROSS BOTTOM PERFORATIONS, 950 BARRELS SALT WATER WITH 275 BARRELS ACID WATER			There are no Fracture Treatments records to display.							
Formation			Top		Were open hole logs run? No					
ELGIN			2872		Date last log run:					
ENDICOTT			3121		Were unusual drilling circumstances encountered? No					
TONKAWA			3485		Explanation:					
LAYTON			4250							
MISSISSIPPI CHAT			5350							
WILCOX			5926							
Other Remarks										
SALT WATER DISPOSAL WELL IN WILCOX, MISSISSIPPI CHAT, LAYTON. ORDER NUMBER 1900850037										

Bottom Holes
Sec: 18 TWP: 22N RGE: 3W County: GARFIELD
SE SW SE SE
163 FSL 1696 FWL of 1/4 SEC
Depth of Deviation: 0 Radius of Turn: 0 Direction: 0 Total Length: 0
Measured Total Depth: 6074 True Vertical Depth: 5324 End Pt. Location From Release, Unit or Property Line: 163

FOR COMMISSION USE ONLY	
Status: Accepted	1142447

API NO. 047-25161
OTC PROD. UNIT NO. 19118

(PLEASE TYPE OR USE BLACK INK ONLY)

OKLAHOMA CORPORATION COMMISSION
Oil & Gas Conservation Division
Post Office Box 52000
Oklahoma City, Oklahoma 73152-2000
Rule 165-10-3-25

RECEIVED
MAR 28 2019
Oklahoma Corporation
Commission

Form 1002A
Rev. 2009

☒ ORIGINAL
☐ AMENDED (Reason)

Disposal Order 1900850037

COMPLETION REPORT

TYPE OF DRILLING OPERATION

☐ STRAIGHT HOLE ☒ DIRECTIONAL HOLE ☐ HORIZONTAL HOLE
☒ SERVICE WELL

If directional or horizontal, see reverse for bottom hole location.

COUNTY Garfield SEC 18 TWP 22n RGE 3w
LEASE NAME Shaffer Inc WELL NO. 2swd
SE 1/4 SE 1/4 SW 1/4 SE 1/4 FSL OF 1/4 SEC 200 FWL OF 1/4 SEC 1240
ELEVATION Ground Latitude (if known) Longitude (if known)
OPERATOR NAME MM Energy Inc OTC / OCC OPERATOR NO. 19118
ADDRESS P O Box 21904
CITY Oklahoma City STATE ok. ZIP 73156

SPUD DATE 9-22-2018
DRLG FINISHED DATE 10-11-2018
DATE OF WELL COMPLETION 1-29-2019
1st PROD DATE SWD
RECOMP DATE

340 Acres
LOCATE WELL

COMPLETION TYPE

SINGLE ZONE
MULTIPLE ZONE
COMINGLED
LOCATION EXCEPTION
ORDER NO.
INCREASED DENSITY
ORDER NO.

CASING & CEMENT (Attach Form 1002C)

TYPE	SIZE	WEIGHT	GRADE	FEET	PSI	SAX	TOP OF CMT
CONDUCTOR							
SURFACE	13 3/8	40#	J	373		310	SURFACE
INTERMEDIATE							
PRODUCTION	9 5/8	43 lb	J	5250		1320 300	SURFACE
LINER	7	26#	J	6078		190	4,974
TOTAL DEPTH						6,078	

PACKER @ BRAND & TYPE PLUG @ TYPE PLUG @ TYPE
PACKER @ BRAND & TYPE PLUG @ TYPE PLUG @ TYPE

COMPLETION & TEST DATA BY PRODUCING FORMATION

FORMATION	Wilcox	Mississippi Chat	Layton	No Frac
SPACING & SPACING ORDER NUMBER				
CLASS: Oil, Gas, Dry, Inj, Disp, Comm Disp, Svc	SWD	SWD	SWD	
PERFORATED INTERVALS	5926-6030	5350 -5640	4250-4389	
ACID/VOLUME	169 gal across bottom perfs	169 gal across bottom perfs	169 gal across bottom perfs	
FRACTURE TREATMENT (Fluids/Prop Amounts)	800 bl salt water with 10,000 gal acid	2670 bl salt water with 825 bl acid water	950 bl salt water with 275 bl acid water	

Min Gas Allowable (165-10-17-7)

Gas Purchaser/Measurer

First Sales Date

INITIAL TEST DATA

INITIAL TEST DATE	2/7/2019	2/7/2019	2/7/2019		
OIL-BBL/DAY	swd	swd	swd		
OIL-GRAVITY (API)					
GAS-MCF/DAY					
GAS-OIL RATIO CU FT/BBL					
WATER-BBL/DAY					
PUMPING OR FLOWING					
INITIAL SHUT-IN PRESSURE					
CHOKE SIZE					
FLOW TUBING PRESSURE					

AS SUBMITTED

A record of the formations drilled through, and pertinent remarks are presented on the reverse. I declare that I have knowledge of the contents of this report and am authorized by my organization to make this report, which was prepared by me or under my supervision and direction, with the data and facts stated herein to be true, correct, and complete to the best of my knowledge and belief.

SIGNATURE mike murphy 3/25/2019 405 463 3355
P O Box 21904 oklahoma city ok 73156
ADDRESS CITY STATE ZIP EMAIL ADDRESS mike@mmenergy.net

PLEASE TYPE OR USE BLACK INK ONLY
FORMATION RECORD

Give formation names and tops, if available, or descriptions and thickness of formations drilled through. Show intervals cored or drillstem tested.

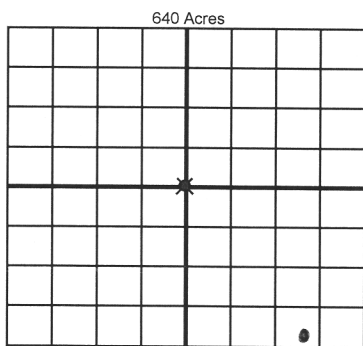
NAMES OF FORMATIONS	TOP
Elgin	2,872
Endicott	3,121
Tonkawa	3485
Layton	4,250
Missippi Chat	5,350
Wilcox	5,926

LEASE NAME Shaffer WELL NO. 2SWD

FOR COMMISSION USE ONLY	
ITD on file <input type="checkbox"/> YES <input type="checkbox"/> NO	
APPROVED _____	DISAPPROVED _____
2) Reject Codes	

Were open hole logs run?	yes	<input checked="" type="checkbox"/> no
Date Last log was run		
Was CO ₂ encountered?	yes	<input checked="" type="checkbox"/> no at what depths? _____
Was H ₂ S encountered?	yes	<input checked="" type="checkbox"/> no at what depths? _____
Were unusual drilling circumstances encountered?	yes	<input checked="" type="checkbox"/> no
If yes, briefly explain below		

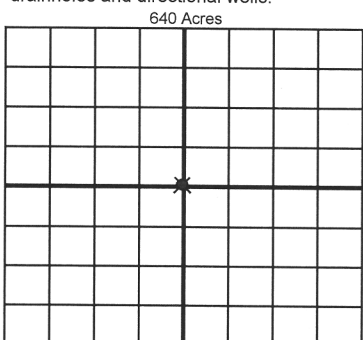
Other remarks: SWD well in Wilcox Mississippi Chat Layton Order no 1900850037



If more than three drainholes are proposed, attach a separate sheet indicating the necessary information.

Direction must be stated in degrees azimuth.
Please note, the horizontal drainhole and its end point must be located within the boundaries of the lease or spacing unit.

Directional surveys are required for all drainholes and directional wells.



BOTTOM HOLE LOCATION FOR DIRECTIONAL HOLE

SEC 18	TWP 22n	RGE 3w	COUNTY Garfield
Spot Location SE 1/4 SW 1/4 se 1/4 se 1/4		Feet From 1/4 Sec Lines	FSL 163 FWL 1696
Measured Total Depth 6074		True Vertical Depth 5324	BHL From Lease, Unit, or Property Line: 163 ft

BOTTOM HOLE LOCATION FOR HORIZONTAL HOLE: (LATERALS)

LATERAL #1

SEC	TWP	RGE	COUNTY
Spot Location 1/4 1/4 1/4		Feet From 1/4 Sec Lines	FSL FWL
Depth of Deviation	Radius of Turn	Direction	Total Length
Measured Total Depth	True Vertical Depth	BHL From Lease, Unit, or Property Line:	

LATERAL #2

SEC	TWP	RGE	COUNTY
Spot Location 1/4 1/4 1/4		Feet From 1/4 Sec Lines	FSL FWL
Depth of Deviation	Radius of Turn	Direction	Total Length
Measured Total Depth	True Vertical Depth	BHL From Lease, Unit, or Property Line:	

LATERAL #3

SEC	TWP	RGE	COUNTY
Spot Location 1/4 1/4 1/4		Feet From 1/4 Sec Lines	FSL FWL
Depth of Deviation	Radius of Turn	Direction	Total Length
Measured Total Depth	True Vertical Depth	BHL From Lease, Unit, or Property Line:	