

Oklahoma Corporation Commission
Oil & Gas Conservation Division
Post Office Box 52000
Oklahoma City, Oklahoma 73152-2000
Rule 165: 10-3-25

Form 1002A

API No.: 35049253560000

Completion Report

Spud Date: November 22, 2021

OTC Prod. Unit No.: 049-227649-0-0000

Drilling Finished Date: December 25, 2021

1st Prod Date: January 30, 2022

Completion Date: January 23, 2022

Drill Type: HORIZONTAL HOLE

Min Gas Allowable: Yes

Well Name: BUTCH CASSIDY 0103 28-21-1MXH

Purchaser/Measurer: IRON HORSE

Location: GARVIN 28 1N 3W
SW NE SE SW
825 FSL 2232 FWL of 1/4 SEC
Latitude: 34.52380854 Longitude: -97.5206461
Derrick Elevation: 0 Ground Elevation: 1035

First Sales Date: 02/01/2022

Operator: CAMINO NATURAL RESOURCES LLC 24097

1401 17TH ST STE 1000
DENVER, CO 80202-1247

Completion Type		Location Exception		Increased Density	
X	Single Zone	Order No		Order No	
	Multiple Zone	725217		There are no Increased Density records to display.	
	Commingled				

Casing and Cement							
Type	Size	Weight	Grade	Feet	PSI	SAX	Top of CMT
SURFACE	13 3/8	48	J-55	1516	1130	1172	SURFACE
INTERMEDIATE	9 5/8	40	HCP-110	6837	4230	363	4579
PRODUCTION	5.5	20	P-110	14157	12090	1245	4827

Liner								
Type	Size	Weight	Grade	Length	PSI	SAX	Top Depth	Bottom Depth
There are no Liner records to display.								

Total Depth: 14163

Packer	
Depth	Brand & Type
There are no Packer records to display.	

Plug	
Depth	Plug Type
There are no Plug records to display.	

Initial Test Data

Test Date	Formation	Oil BBL/Day	Oil-Gravity (API)	Gas MCF/Day	Gas-Oil Ratio Cu FT/BBL	Water BBL/Day	Pumpin or Flowing	Initial Shut-In Pressure	Choke Size	Flow Tubing Pressure
Feb 15, 2022	ALL ZONES PRODUCING	461	35	138	299	2856	FLOWING	922	42	373

Completion and Test Data by Producing Formation

Formation Name: SYCAMORE

Code: 352SCMR

Class: OIL

Spacing Orders

Order No	Unit Size
59037	640
725216	MULTIUNIT

Perforated Intervals

From	To
7980	13164

Acid Volumes

500 GALLONS 15% HCl

Fracture Treatments

374,158 BARRELS FLUID, 15,596,590 POUNDS PROPPANT

Formation Name: MISSISSIPPIAN UNDERTHRUST

Code: 359MPUTD

Class: OIL

Spacing Orders

Order No	Unit Size
722191	245
725216	MULTIUNIT

Perforated Intervals

From	To
13164	14095

Acid Volumes

ACIDIZED WITH SYCAMORE

Fracture Treatments

FRACED WITH SYCAMORE

Formation	Top
MISSISSIPPIAN	7667

Were open hole logs run? No

Date last log run:

Were unusual drilling circumstances encountered? No

Explanation:

Other Remarks

OCC - SPACING ORDER NUMBER 722191 IS AN IRREGULAR 245 ACRE UNIT COMPRISING OF SW/4, SWNW, W/2SEnw, SWNWNW, W/2SEnWNW, AND NWNWNW IN SEC 21-1N-3W GARVIN COUNTY

Lateral Holes

Sec: 21 TWP: 1N RGE: 3W County: GARVIN

NE NW SE SW

996 FSL 685 FEL of 1/4 SEC

Depth of Deviation: 7179 Radius of Turn: 582 Direction: 359 Total Length: 5963

Measured Total Depth: 14163 True Vertical Depth: 8348 End Pt. Location From Release, Unit or Property Line: 685

FOR COMMISSION USE ONLY

1147721

Status: Accepted

API NO. 35-049 25356
OTC PROD. UNIT NO. 049-227649

Oil and Gas Conservation Division
P.O. Box 52000
Oklahoma City, OK 73152-2000
405-521-2331
OCCCentralProcessing@OCC.OK.GOV



OKLAHOMA
Corporation
Commission

RECEIVED

MAR 17 2022

Rev. 2021

ORIGINAL
AMENDED (Reason)

Rule 165:10-3-25

COMPLETION REPORT

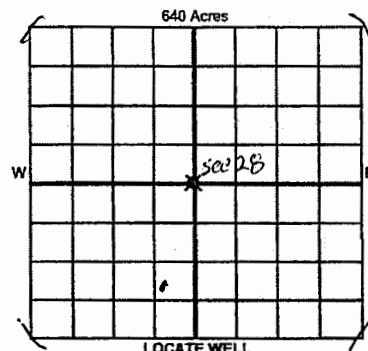
OKLAHOMA CORPORATION
COMMISSION

TYPE OF DRILLING OPERATION

☐ STRAIGHT HOLE ☐ DIRECTIONAL HOLE ☒ HORIZONTAL HOLE
☐ SERVICE WELL

If directional or horizontal, see reverse for bottom hole location.

COUNTY	Garvin	SEC	28	TWP	1N	RGE	3W	SPUD DATE	11/22/21
LEASE NAME	Butch Cassidy 0103			WELL NO.	28-21-1MXH			DRLG FINISHED DATE	12/25/21
DATE OF WELL COMPLETION	1/23/22			1st PROD DATE	1/30/22			RECOMP DATE	
ELEVATION	Ground	1035	Latitude	34.52380854			Longitude	-97.52064610	
OPERATOR NAME	Camino Natural Resources LLC			OTC / OCC OPERATOR NO.	24097				
ADDRESS	1401 17th St STE 1000								
CITY	Denver	STATE	CO	ZIP	80202				



COMPLETION TYPE

<input checked="" type="radio"/> SINGLE ZONE	
<input type="radio"/> MULTIPLE ZONE	
<input type="radio"/> COMMINGLED	
LOCATION EXCEPTION ORDER NO.	725217 722721 FO
MULTIUNIT ORDER NO.	725216 722720 FO
INCREASED DENSITY ORDER NO.	PO

CASING & CEMENT (Attach Form 1002C)

TYPE	SIZE	WEIGHT	GRADE	FEET	PSI	SAX	TOP OF CMT
CONDUCTOR							
SURFACE	13 3/8	48	J55	1516	1130	1172	Surface
INTERMEDIATE	9 5/8	40	ICP110	6837	4230	363	4579
PRODUCTION	5.5	20	P110	14157	12090	1245	4827
LINER							

PACKER @ BRAND & TYPE PLUG @ TYPE PLUG @ TYPE TOTAL DEPTH 14163

FORMATION	Sycamore Miss	Mississippi Underthrust	Reported to
SPACING & SPACING ORDER NUMBER	(NO) 59037 722191	722191 (245)	Frac Focus
CLASS: Oil, Gas, Dry, Inj, Disp, Comm Disp, Svc	Oil	oil	
PERFORATED INTERVALS	7980-13164	13164-14095	
ACID/VOLUME	500 GAL 15% HCL	Acidized @ Sycamore	
FRACTURE TREATMENT (Fluids/Prop Amounts)	374,158 BBLs FLUID; 15,596,590# PROP	Frac'd with Sycamore	

Min Gas Allowable (165:10-17-7) OR Oil Allowable (165:10-13-3) Purchaser/Measurer Iron Horse First Sales Date 02/01/22

INITIAL TEST DATE	2/15/22
OIL-BBL/DAY	461
OIL-GRAVITY (API)	35
GAS-MCF/DAY	138
GAS-OIL RATIO CU FT/BBL	299
WATER-BBL/DAY	2856
PUMPING OR FLOWING	FLOWING
INITIAL SHUT-IN PRESSURE	922
CHOKE SIZE	42
FLOW TUBING PRESSURE	373

A record of the formations drilled through, and pertinent remarks are presented on the reverse. I declare that I have knowledge of the contents of this report and am authorized by my organization to make this report, which was prepared by me or under my supervision and direction, with the data and facts stated herein to be true, correct, and complete to the best of my knowledge and belief.

SIGNATURE	Tami Laird	NAME (PRINT OR TYPE)	Tami Laird	DATE	3/15/22	PHONE NUMBER	405-821-0568
ADDRESS	1401 17th St. STE 1000	CITY	Denver	STATE	CO	ZIP	80202-1247
EMAIL ADDRESS	t Laird@caminoresources.com						

PLEASE TYPE OR USE BLACK INK ONLY
FORMATION RECORD

Give formation names and tops, if available, or descriptions and thickness of formations drilled through. Show intervals cored or drillstem tested.

LEASE NAME Butch Cassidy WELL NO. 1MXH

NAMES OF FORMATIONS	TOP
MISSISSIPPIAN	7667

FOR COMMISSION USE ONLY

ITD on file ☐ YES ☐ NO

APPROVED _____ DISAPPROVED _____

2) Reject Codes _____

Were open hole logs run? ☐ yes ☒ no

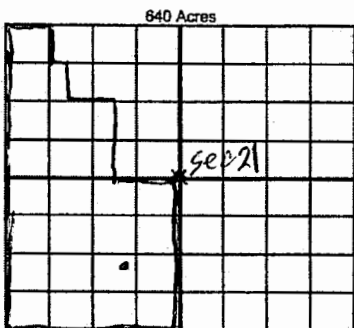
Date Last log was run _____

Was CO₂ encountered? ☐ yes ☒ no at what depths? _____

Was H₂S encountered? ☐ yes ☒ no at what depths? _____

Were unusual drilling circumstances encountered? ☐ yes ☒ no
If yes, briefly explain below _____

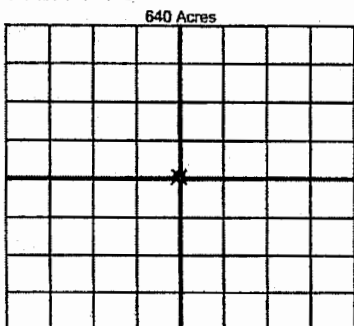
Other remarks: OCC - Spacing order 722191 is an irregular 245 acre unit comprising of SW 1/4, SW NW 1/4, W 1/2 SE NW 1/4, SW NW NW 1/4, W 1/2 SE NW NW 1/4, and NW NW NW 1/4 in Sec 21-1 N-3W Garvin County



If more than three drainholes are proposed, attach a separate sheet indicating the necessary information.

Direction must be stated in degrees azimuth. Please note, the horizontal drainhole and its end point must be located within the boundaries of the lease or spacing unit.

Directional surveys are required for all drainholes and directional wells.



BOTTOM HOLE LOCATION FOR DIRECTIONAL HOLE

SEC	TWP	RGE	COUNTY
1/4	1/4	1/4	1/4
Measured Total Depth	True Vertical Depth	BHL From Lease, Unit, or Property Line:	

BOTTOM HOLE LOCATION FOR HORIZONTAL HOLE: (LATERALS)

LATERAL #1	SEC	TWP	RGE	COUNTY
SEC 21	1N	3W	Garvin	FEL 685
NE 1/4 NW 1/4 SE 1/4 SW 1/4	Feet From 1/4 Sec Lines	FSL 996	FWL 1969	
Depth of Deviation 7179	Radius of Turn 582	Direction 359.80	Total Length 5963	
Measured Total Depth 14163	True Vertical Depth 8349	BHL From Lease, Unit, or Property Line:	996 685	

LATERAL #2

SEC	TWP	RGE	COUNTY
1/4	1/4	1/4	1/4
Depth of Deviation	Radius of Turn	Direction	Total Length
Measured Total Depth	True Vertical Depth	BHL From Lease, Unit, or Property Line:	

LATERAL #3

SEC	TWP	RGE	COUNTY
1/4	1/4	1/4	1/4
Depth of Deviation	Radius of Turn	Direction	Total Length
Measured Total Depth	True Vertical Depth	BHL From Lease, Unit, or Property Line:	