

Oklahoma Corporation Commission
Oil & Gas Conservation Division
Post Office Box 52000
Oklahoma City, Oklahoma 73152-2000
Rule 165: 10-3-25

Form 1002A

API No.: 35063248950001

Completion Report

Spud Date: June 06, 2019

OTC Prod. Unit No.: 063-226291-0-0000

Drilling Finished Date: July 02, 2019

1st Prod Date: September 30, 2019

Completion Date: September 15, 2019

Drill Type: HORIZONTAL HOLE

Well Name: BONELL 2-27/34H

Purchaser/Measurer: SOUTHWEST ENERGY LP

Location: HUGHES 22 6N 11E
SE SE SE SW
182 FSL 2466 FWL of 1/4 SEC
Latitude: 34.58164 Longitude: -96.75982
Derrick Elevation: 0 Ground Elevation: 771

First Sales Date: 09/30/2019

Operator: CANYON CREEK ENERGY ARKOMA LLC 24379

2431 E 61ST ST STE 400
TULSA, OK 74136-1237

Completion Type	
X	Single Zone
	Multiple Zone
	Commingled

Location Exception	
Order No	
708747	

Increased Density	
Order No	
699057	
699058	

Casing and Cement							
Type	Size	Weight	Grade	Feet	PSI	SAX	Top of CMT
CONDUCTOR	20	94	H-40	40			
SURFACE	13 3/8	54.5	J-55	364		225	SURFACE
INTERMEDIATE	9 5/8	36	J-55	4488		305	2206
PRODUCTION	5 1/2	20	P-110	16978		1965	3603

Liner								
Type	Size	Weight	Grade	Length	PSI	SAX	Top Depth	Bottom Depth
There are no Liner records to display.								

Total Depth: 17015

Packer	
Depth	Brand & Type
There are no Packer records to display.	

Plug	
Depth	Plug Type
There are no Plug records to display.	

Initial Test Data

Test Date	Formation	Oil BBL/Day	Oil-Gravity (API)	Gas MCF/Day	Gas-Oil Ratio Cu FT/BBL	Water BBL/Day	Pumpin or Flowing	Initial Shut-In Pressure	Choke Size	Flow Tubing Pressure
Nov 03, 2019	WOODFORD			7525		1188	FLOWING	2220	66/128	350

Completion and Test Data by Producing Formation

Formation Name: WOODFORD

Code: 319WDFD

Class: GAS

Spacing Orders

Order No	Unit Size
679022	640
679023	640
708746	MULTIUNIT

Perforated Intervals

From	To
6742	16908

Acid Volumes

NONE

Fracture Treatments

13,213,543 POUNDS 40/70 SAND, 398,981 BARRELS FRAC FLUID
--

Formation	Top
WOODFORD	6409

Were open hole logs run? No

Date last log run:

Were unusual drilling circumstances encountered? No

Explanation:

Other Remarks

There are no Other Remarks.

Lateral Holes

Sec: 34 TWP: 6N RGE: 11E County: HUGHES

SW SE SE SW

75 FSL 2007 FWL of 1/4 SEC

Depth of Deviation: 5851 Radius of Turn: 811 Direction: 176 Total Length: 10353

Measured Total Depth: 17015 True Vertical Depth: 6290 End Pt. Location From Release, Unit or Property Line: 75

FOR COMMISSION USE ONLY

1144900

Status: Accepted

API NO. 063 24895
OTC PROD. UNIT NO. 003-226291
ORIGINAL
AMENDED (Reason)

PLEASE TYPE OR USE BLACK INK ONLY
NOTE:

Attach copy of original 1002A
if recompletion or reentry.

OKLAHOMA CORPORATION COMMISSION
Oil & Gas Conservation Division
Post Office Box 52000
Oklahoma City, Oklahoma 73152-2000
Rule 165:10-3-25

RECEIVED

MAR 17 2020

Form 1002A
Rev. 2009

COMPLETION REPORT

OKLAHOMA CORPORATION
COMMISSION
640 Acres

TYPE OF DRILLING OPERATION
☐ STRAIGHT HOLE ☐ DIRECTIONAL HOLE ☒ HORIZONTAL HOLE
☐ SERVICE WELL

If directional or horizontal, see reverse for bottom hole location.

COUNTY Hughes SEC 22 TWP 6N RGE 11E
LEASE NAME Bonell
SE 1/4 SE 1/4 SE 1/4 SW 1/4 FSL OF 1/4 SEC 182
ELEVATION Ground 771
Derrick FL 771
Latitude (if known) 34.581640
Longitude (if known) -96.75982
OPERATOR Canyon Creek Energy
ADDRESS 2431 E. 61st St Suite 400
CITY Tulsa STATE OK ZIP 74136

COMPLETION TYPE

☒ SINGLE ZONE
☐ MULTIPLE ZONE
Application Date
COMINGLED
Application Date
LOCATION
EXCEPTION ORDER 708747
INCREASED DENSITY
ORDER NO. 699057

CASING & CEMENT (Form 1002C must be attached)

TYPE	SIZE	WEIGHT	GRADE	FEET	PSI	SAX	TOP OF CMT
CONDUCTOR	20"	94#	H-40	40			
SURFACE	13 3/8	54.5#	J55	364		225	Surface
INTERMEDIATE	9 5/8"	36#	J55	4,488		305	2,206
PRODUCTION	5 1/2"	20#	P110	16,978		1965	3,603
LINER							
				TOTAL DEPTH	17,015		

PACKER @ BRAND & TYPE PLUG @ TYPE PLUG @ TYPE
PACKER @ BRAND & TYPE PLUG @ TYPE PLUG @ TYPE

COMPLETION & TEST DATA BY PRODUCING FORMATION

319WDFD

FORMATION Woodford
SPACING & SPACING ORDER NUMBER (640) 679022/679023 (640)
CLASS: Oil, Gas, Dry, Inj, Disp, Comm Disp, Svc
PERFORATED INTERVALS 6742-16908
ACID/VOLUME None
FRACTURE TREATMENT (Fluids/Prop Amounts) 13,213,543 #s 40/70 Sand
398,981 bbls Frac Fluid

Reported
to Frac Focus

Min Gas Allowable (165:10-17-7)

Gas Purchaser/Measurer

Southwest Energy, LP

☐

OR

First Sales Date

9/30/2019

INITIAL TEST DATA

Oil Allowable (165:10-13-3)

INITIAL TEST DATE	11/3/2019				
OIL-BBL/DAY	-				
OIL-GRAVITY (API)	-				
GAS-MCF/DAY	7525				
GAS-OIL RATIO CU FT/BBL	-				
WATER-BBL/DAY	1188				
PUMPING OR FLOWING	flowing				
INITIAL SHUT-IN PRESSURE	2220				
CHOKE SIZE	66/128				
FLOW TUBING PRESSURE	350 #s				

A record of the formations drilled through, and pertinent remarks are presented on the reverse. I declare that I have knowledge of the contents of this report and am authorized by my organization to make this report, which was prepared by me or under my supervision and direction, with the data and facts stated herein to be true, correct, and complete to the best of my knowledge and belief.

SIGNATURE C. Daniel Jacobs
2431 E. 61st ST. SUITE 400 TULSA OK 74136
ADDRESS CITY STATE ZIP
DATE 3/12/2020 PHONE NUMBER 918-561-6737
EMAIL ADDRESS djacobs@cceok.com

PLEASE TYPE OR USE BLACK INK ONLY

FORMATION RECORD

Give formation names and tops, if available, or descriptions and thickness of formations drilled through. Show intervals cored or drillstem tested.

LEASE NAME Bonell WELL NO. 2-27/34H

NAMES OF FORMATIONS	TOP
Woodford	6,409

FOR COMMISSION USE ONLY

ITD on file ☐ YES ☐ NO

APPROVED _____ DISAPPROVED _____

2) Reject Codes _____

Were open hole logs run? _____ yes ☒ no

Date Last log was run _____ N/A

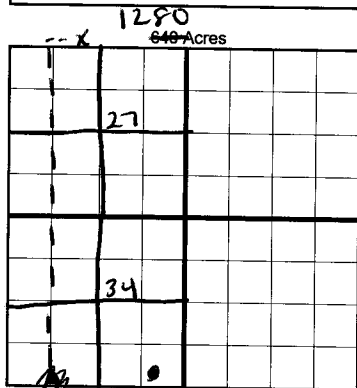
Was CO₂ encountered? _____ yes ☒ no at what depths? _____

Was H₂S encountered? _____ yes ☒ no at what depths? _____

Were unusual drilling circumstances encountered? _____ yes ☒ no

If yes, briefly explain below _____

Other remarks: _____

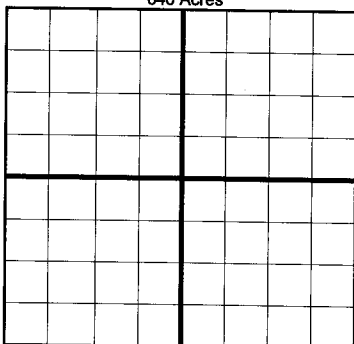


If more than three drainholes are proposed, attach a separate sheet indicating the necessary information.

Direction must be stated in degrees azimuth. Please note, the horizontal drainhole and its end point must be located within the boundaries of the lease or spacing unit.

Directional surveys are required for all drainholes and directional wells.

840 Acres



BOTTOM HOLE LOCATION FOR DIRECTIONAL HOLE

SEC	TWP	RGE	COUNTY
Spot Location	1/4	1/4	1/4
Measured Total Depth	True Vertical Depth	BHL From Lease, Unit, or Property Line:	

BOTTOM HOLE LOCATION FOR HORIZONTAL HOLE: (LATERALS)

SEC	TWP	RGE	COUNTY
34	6N	11E	Hughes
Spot Location	SW 1/4	SE 1/4	SW 1/4
Depth of Deviation	5,851	Radius of Turn	811
Measured Total Depth	17,015	True Vertical Depth	6,290
Direction	176 179	Total Length	10,353
BHL From Lease, Unit, or Property Line:	75' FSL 2007 FWL		

SEC	TWP	RGE	COUNTY
Spot Location	1/4	1/4	1/4
Depth of Deviation	Radius of Turn	Direction	Total Length
Measured Total Depth	True Vertical Depth	BHL From Lease, Unit, or Property Line:	

SEC	TWP	RGE	COUNTY
Spot Location	1/4	1/4	1/4
Depth of Deviation	Radius of Turn	Direction	Total Length
Measured Total Depth	True Vertical Depth	BHL From Lease, Unit, or Property Line:	

