

Oklahoma Corporation Commission
Oil & Gas Conservation Division
Post Office Box 52000
Oklahoma City, Oklahoma 73152-2000
Rule 165: 10-3-25

Form 1002A

API No.: 35087222080000

Completion Report

Spud Date: January 24, 2019

OTC Prod. Unit No.: 087-225465-0-0000

Drilling Finished Date: February 02, 2019

1st Prod Date: June 07, 2019

Completion Date: June 07, 2019

Drill Type: STRAIGHT HOLE

Well Name: WILLIAMSON 1-4

Purchaser/Measurer:

Location: MCCLAIN 4 7N 2W
E2 SW SE NW
2310 FNL 1720 FWL of 1/4 SEC
Latitude: 35.11053 Longitude: -97.418017
Derrick Elevation: 1084 Ground Elevation: 1069

First Sales Date:

Operator: OKLAND OIL COMPANY 7910

110 N ROBINSON AVE STE 400
OKLAHOMA CITY, OK 73102-9022

Completion Type		Location Exception		Increased Density	
X	Single Zone	Order No		Order No	
	Multiple Zone	694940		There are no Increased Density records to display.	
	Commingled				

Casing and Cement							
Type	Size	Weight	Grade	Feet	PSI	SAX	Top of CMT
CONDUCTOR	16			70		230	SURFACE
SURFACE	9 5/8	36	J-55	870	1000	240	SURFACE
PRODUCTION	5 1/2	17	N-80	8210	1400	230	6790

Liner								
Type	Size	Weight	Grade	Length	PSI	SAX	Top Depth	Bottom Depth
There are no Liner records to display.								

Total Depth: 8220

Packer	
Depth	Brand & Type
There are no Packer records to display.	

Plug	
Depth	Plug Type
There are no Plug records to display.	

Initial Test Data

Test Date	Formation	Oil BBL/Day	Oil-Gravity (API)	Gas MCF/Day	Gas-Oil Ratio Cu FT/BBL	Water BBL/Day	Pumpin or Flowing	Initial Shut- In Pressure	Choke Size	Flow Tubing Pressure
Jun 08, 2019	HUNTON	36				50	PUMPING		N/A	

Completion and Test Data by Producing Formation

Formation Name: HUNTON

Code: 269HNTN

Class: OIL

Spacing Orders

Order No	Unit Size
219784	80

Perforated Intervals

From	To
7326	7594

Acid Volumes

15,000

Fracture Treatments

362,880 GALLONS WATER, 168,750 POUNDS 20/40 SAND
--

Formation	Top
HUNTON	7334
VIOLA	7714
BROMIDE	8096

Were open hole logs run? Yes

Date last log run: January 31, 2019

Were unusual drilling circumstances encountered? No

Explanation:

Other Remarks

There are no Other Remarks.

FOR COMMISSION USE ONLY

Status: Accepted

1143085

API NO. 087-22208
OTC PROD. UNIT NO. 087-225465

(PLEASE TYPE OR USE BLACK INK ONLY)

OKLAHOMA CORPORATION COMMISSION
Oil & Gas Conservation Division
Post Office Box 52000
Oklahoma City, Oklahoma 73152-2000
Rule 165:10-3-25

RECEIVED

Form 1002A
Rev. 2009

JUN 11 2019

OKLAHOMA CORPORATION COMMISSION
640 Acres

☒ ORIGINAL
☐ AMENDED (Reason)

TYPE OF DRILLING OPERATION

☒ STRAIGHT HOLE ☐ DIRECTIONAL HOLE ☐ HORIZONTAL HOLE
SERVICE WELL

If directional or horizontal, see reverse for bottom hole location.

COUNTY **McCLAIN** SEC **4** TWP **7N** RGE **2W**
LEASE NAME **WILLIAMSON** WELL NO. **1-4**
E/2 1/4 SW 1/4 SE 1/4 NW 1/4 **E/2 1/4 SW 1/4 SE 1/4 NW 1/4** FSL OF 1/4 SEC **330** FWL OF 1/4 SEC **1720**
ELEVATION Derrick FL **1084** Ground **1069** Latitude (if known) **35.11053** Longitude (if known) **-97.418017**
OPERATOR NAME **OKLAND OIL COMPANY** OTC / OCC OPERATOR NO. **07910-0**
ADDRESS **110 N. ROBINSON #400**
CITY **OKLAHOMA CITY** STATE **OK** ZIP **73102**

COMPLETION REPORT

SPUD DATE **01/24/2019**
DRLG FINISHED DATE **02/02/2019**
DATE OF WELL COMPLETION **06/07/2019**
1st PROD DATE **06/07/2019**
RECOMP DATE

LOCATE WELL

COMPLETION TYPE

☒ SINGLE ZONE
☐ MULTIPLE ZONE
Application Date
☐ COMMINGLED
Application Date
LOCATION EXCEPTION ORDER NO. **694940**
INCREASED DENSITY ORDER NO.

CASING & CEMENT (Attach Form 1002C)

TYPE	SIZE	WEIGHT	GRADE	FEET	PSI	SAX	TOP OF CMT
CONDUCTOR	16			70		230	surface
SURFACE	9 5/8"	36	J55	870	1000	240	surface
INTERMEDIATE							
PRODUCTION	5 1/2"	17#	N80	8210	1400	230	6790
LINER							
						TOTAL DEPTH	8,220

PACKER @ _____ BRAND & TYPE _____

PACKER @ _____ BRAND & TYPE _____

PLUG @ _____ TYPE _____

PLUG @ _____ TYPE _____

PLUG @ _____ TYPE _____

PLUG @ _____ TYPE _____

TOTAL DEPTH

8,220

COMPLETION & TEST DATA BY PRODUCING FORMATION

FORMATION **HUNTON**
SPACING & SPACING ORDER NUMBER **80 ACRES-219784**
CLASS: Oil, Gas, Dry, Inj, Disp, Comm Disp, Svc **OIL**
PERFORATED INTERVALS **7326'-7594'**
ACID/VOLUME **15000**
FRACTURE TREATMENT (Fluids/Prop Amounts) **362880 GALS water**
168750# 20/40 Sand

Reported to Frac Focus

Min Gas Allowable (165:10-17-7)

☐

OR

Oil Allowable (165:10-13-3)

Gas Purchaser/Measurer

First Sales Date

INITIAL TEST DATA

INITIAL TEST DATE **6/8/2019**
OIL-BBL/DAY **36**
OIL-GRAVITY (API)
GAS-MCF/DAY **nil**
GAS-OIL RATIO CU FT/BBL
WATER-BBL/DAY **50**
PUMPING OR FLOWING **PUMP**
INITIAL SHUT-IN PRESSURE **0**
CHOKE SIZE **n/a**
FLOW TUBING PRESSURE **n/a**

AS SUBMITTED

A record of the formations drilled through and pertinent remarks are presented on the reverse. I declare that I have knowledge of the contents of this report and am authorized by my organization to make this report, which was prepared by me or under my supervision and direction, with the data and facts stated herein to be true, correct, and complete to the best of my knowledge and belief.

SIGNATURE

MARK WELLS

NAME (PRINT OR TYPE)

DATE

PHONE NUMBER

Unable to adjust page break

110 N. ROBINSON #400	OKLAHOMA CITY	OK	73102	mwells@oklandoil.com
ADDRESS	CITY	STATE	ZIP	EMAIL ADDRESS

PLEASE TYPE OR USE BLACK INK ONLY
FORMATION RECORD

Give formation names and tops, if available, or descriptions and thickness of formations drilled through. Show intervals cored or drillstem tested.

LEASE NAME WILLIAMSON WELL NO. #1-4

NAMES OF FORMATIONS	TOP
HUNTON	7334'
VIOLA	7714'
BROMIDE	8096'

FOR COMMISSION USE ONLY

ITD on file ☐ YES ☐ NO

APPROVED _____ DISAPPROVED _____

2) Reject Codes

Were open hole logs run? ☒ yes ☐ no

Date Last log was run 1/31/2019

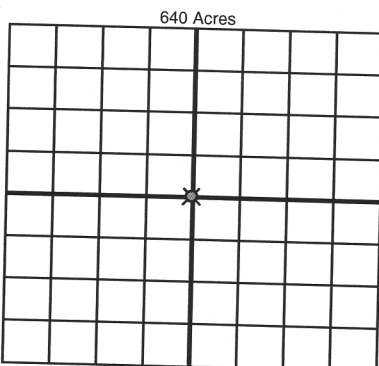
Was CO₂ encountered? ☐ yes ☒ no at what depths? _____

Was H₂S encountered? ☐ yes ☒ no at what depths? _____

Were unusual drilling circumstances encountered? ☐ yes ☒ no

If yes, briefly explain below _____

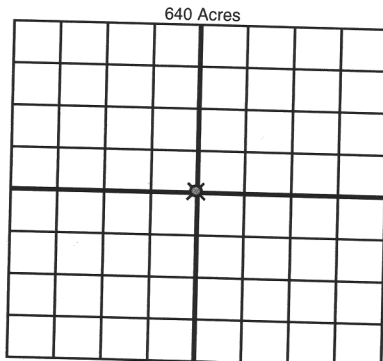
Other remarks:



If more than three drainholes are proposed, attach a separate sheet indicating the necessary information.

Direction must be stated in degrees azimuth. Please note, the horizontal drainhole and its end point must be located within the boundaries of the lease or spacing unit.

Directional surveys are required for all drainholes and directional wells.



BOTTOM HOLE LOCATION FOR DIRECTIONAL HOLE

SEC	TWP	RGE	COUNTY
Spot Location			
1/4	1/4	1/4	1/4
Measured Total Depth		True Vertical Depth	BHL From Lease, Unit, or Property Line:

BOTTOM HOLE LOCATION FOR HORIZONTAL HOLE: (LATERALS)

LATERAL #1

SEC	TWP	RGE	COUNTY
Spot Location			
1/4	1/4	1/4	1/4
Depth of Deviation		Radius of Turn	Direction
Measured Total Depth		True Vertical Depth	BHL From Lease, Unit, or Property Line:

LATERAL #2

SEC	TWP	RGE	COUNTY
Spot Location			
1/4	1/4	1/4	1/4
Depth of Deviation		Radius of Turn	Direction
Measured Total Depth		True Vertical Depth	BHL From Lease, Unit, or Property Line:

LATERAL #3

SEC	TWP	RGE	COUNTY
Spot Location			
1/4	1/4	1/4	1/4
Depth of Deviation		Radius of Turn	Direction
Measured Total Depth		True Vertical Depth	BHL From Lease, Unit, or Property Line: