

Oklahoma Corporation Commission
Oil & Gas Conservation Division
Post Office Box 52000
Oklahoma City, Oklahoma 73152-2000
Rule 165: 10-3-25

Form 1002A

API No.: 35051243990000

Completion Report

Spud Date: January 18, 2018

OTC Prod. Unit No.: 051-224334-0-0000

Drilling Finished Date: February 18, 2018

1st Prod Date: October 19, 2018

Completion Date: October 12, 2018

Drill Type: HORIZONTAL HOLE

Min Gas Allowable: Yes

Well Name: BROKEN M 2H-10

Purchaser/Measurer: BLUE MOUNTAIN
MIDSTREAM

First Sales Date: 10/19/2018

Location: GRADY 10 9N 6W
SW SE SW SE
250 FSL 1835 FEL of 1/4 SEC
Latitude: 35.26238 Longitude: -97.818139
Derrick Elevation: 0 Ground Elevation: 1354

Operator: GAEDEKE OIL & GAS OPERATING LLC 22637

3710 RAWLINS ST STE 1000
DALLAS, TX 75219-6409

Completion Type		Location Exception		Increased Density	
X	Single Zone	Order No		Order No	
	Multiple Zone	There are no Location Exception records to display.		685485	
	Commingled				

Casing and Cement							
Type	Size	Weight	Grade	Feet	PSI	SAX	Top of CMT
CONDUCTOR	20	48		90			
SURFACE	9.625	40	P-110	1245	3470	490	SURFACE
PRODUCTION	5.5	23	P-110	15650	14540	2120	6500

Liner								
Type	Size	Weight	Grade	Length	PSI	SAX	Top Depth	Bottom Depth
There are no Liner records to display.								

Total Depth: 15665

Packer	
Depth	Brand & Type
There are no Packer records to display.	

Plug	
Depth	Plug Type
There are no Plug records to display.	

Initial Test Data

Test Date	Formation	Oil BBL/Day	Oil-Gravity (API)	Gas MCF/Day	Gas-Oil Ratio Cu FT/BBL	Water BBL/Day	Pumpin or Flowing	Initial Shut-In Pressure	Choke Size	Flow Tubing Pressure
Oct 28, 2018	WOODFORD	277	46.5	1001	3614	512	FLOWING	2302	64/64	320

Completion and Test Data by Producing Formation									
Formation Name: WOODFORD				Code: 319WDFD			Class: OIL		
Spacing Orders				Perforated Intervals					
Order No		Unit Size		From			To		
665571		640		10870			15528		
Acid Volumes				Fracture Treatments					
636 BARRELS 15% HCL				26 STAGES - 255,758 BARRELS SLICKWATER, 3,102,917 POUNDS 100 MESH SAND, 9,624,595 POUNDS 40/70 SAND					

Formation	Top
WOODFORD	10669

Were open hole logs run? No

Date last log run:

Were unusual drilling circumstances encountered? No

Explanation:

Other Remarks
OCC - THIS WELL IS ON PATTERN FOR THE COMPLETION INTERVAL AS ALLOWED BY THE SPACING ORDER.

Lateral Holes
Sec: 10 TWP: 9N RGE: 6W County: GRADY NW NW NW NE 86 FNL 2314 FEL of 1/4 SEC Depth of Deviation: 10225 Radius of Turn: 539 Direction: 359 Total Length: 4593 Measured Total Depth: 15665 True Vertical Depth: 10684 End Pt. Location From Release, Unit or Property Line: 86

FOR COMMISSION USE ONLY
<div>Status: Accepted</div> <div>1143113</div>

EMAIL ADDRESS

PLEASE TYPE OR USE BLACK INK ONLY
FORMATION RECORD

Give formation names and tops, if available, or descriptions and thickness of formations drilled through. Show intervals cored or drillstem tested.

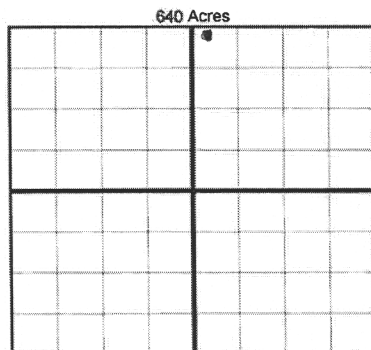
NAMES OF FORMATIONS	TOP
Woodford	10,669'

LEASE NAME Broken M WELL NO. 1H-10

FOR COMMISSION USE ONLY	
ITD on file <input type="checkbox"/> YES <input type="checkbox"/> NO	
APPROVED _____	DISAPPROVED _____
2) Reject Codes	

Were open hole logs run?	yes	<input checked="" type="checkbox"/> no
Date Last log was run	_____	
Was CO ₂ encountered?	yes	<input checked="" type="checkbox"/> no at what depths? _____
Was H ₂ S encountered?	yes	<input checked="" type="checkbox"/> no at what depths? _____
Were unusual drilling circumstances encountered?	yes	<input checked="" type="checkbox"/> no
If yes, briefly explain below		

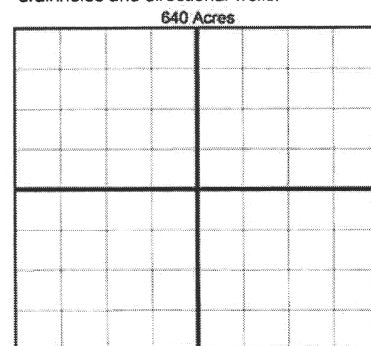
Other remarks: *OCC - This well is on pattern for the completion interval as allowed by the spacing order.*



If more than three drainholes are proposed, attach a separate sheet indicating the necessary information.

Direction must be stated in degrees azimuth. Please note, the horizontal drainhole and its end point must be located within the boundaries of the lease or spacing unit.

Directional surveys are required for all drainholes and directional wells.



BOTTOM HOLE LOCATION FOR DIRECTIONAL HOLE

SEC	TWP	RGE	COUNTY
Spot Location	1/4	1/4	1/4
Measured Total Depth	True Vertical Depth	BHL From Lease, Unit, or Property Line:	

BOTTOM HOLE LOCATION FOR HORIZONTAL HOLE: (LATERALS)

LATERAL #1	SEC	TWP	RGE	COUNTY
Spot Location	10	9N	6W	Grady
Depth of Deviation	NW	NW	NE	NE
Measured Total Depth	10225'	Radius of Turn	539'	Direction 359.354°
True Vertical Depth	15665'	Total Length 4593'		
BHL From Lease, Unit, or Property Line: 86' FNL & 2314' FEL				

LATERAL #2	SEC	TWP	RGE	COUNTY
Spot Location	1/4	1/4	1/4	1/4
Depth of Deviation	Radius of Turn		Direction	
Measured Total Depth	True Vertical Depth		Total Length	
BHL From Lease, Unit, or Property Line:				

LATERAL #3	SEC	TWP	RGE	COUNTY
Spot Location	1/4	1/4	1/4	1/4
Depth of Deviation	Radius of Turn		Direction	
Measured Total Depth	True Vertical Depth		Total Length	
BHL From Lease, Unit, or Property Line:				