

Oklahoma Corporation Commission
Oil & Gas Conservation Division
Post Office Box 52000
Oklahoma City, Oklahoma 73152-2000
Rule 165: 10-3-25

Form 1002A

API No.: 35087222340000

Completion Report

Spud Date: April 27, 2019

OTC Prod. Unit No.: 087-225839-0-0000

Drilling Finished Date: June 08, 2019

1st Prod Date: July 15, 2019

Completion Date: July 15, 2019

Drill Type: HORIZONTAL HOLE

Min Gas Allowable: Yes

Well Name: NIGHTHAWK 0718 4H

Purchaser/Measurer: ENABLE GATHERING &
PROCESSING

Location: MCCLAIN 7 9N 4W
NW SE NE NW
796 FNL 2213 FWL of 1/4 SEC
Latitude: 35.274207953 Longitude: -97.663099712
Derrick Elevation: 0 Ground Elevation: 1354

First Sales Date: 07/15/2019

Operator: EOG RESOURCES INC 16231

3817 NW EXPRESSWAY STE 500
OKLAHOMA CITY, OK 73112-1483

Completion Type		Location Exception		Increased Density	
X	Single Zone	Order No		Order No	
	Multiple Zone	700051		695764	
	Commingled			700105	

Casing and Cement							
Type	Size	Weight	Grade	Feet	PSI	SAX	Top of CMT
SURFACE	9 5/8	36	J-55	1214		480	SURFACE
PRODUCTION	5 1/2	20	P-110	19808		2640	8832

Liner								
Type	Size	Weight	Grade	Length	PSI	SAX	Top Depth	Bottom Depth
There are no Liner records to display.								

Total Depth: 19812

Packer	
Depth	Brand & Type
There are no Packer records to display.	

Plug	
Depth	Plug Type
There are no Plug records to display.	

Initial Test Data

Test Date	Formation	Oil BBL/Day	Oil-Gravity (API)	Gas MCF/Day	Gas-Oil Ratio Cu FT/BBL	Water BBL/Day	Pumpin or Flowing	Initial Shut-In Pressure	Choke Size	Flow Tubing Pressure
Jul 18, 2019	WOODFORD	1001	40	1104	1102	6625	FLOWING	1200	128	490

Completion and Test Data by Producing Formation									
Formation Name: WOODFORD				Code: 319WDFD			Class: OIL		
Spacing Orders				Perforated Intervals					
Order No		Unit Size		From			To		
632844		640		9600			19714		
682713		640							
698667		MULTIUNIT							
Acid Volumes				Fracture Treatments					
1,665 GALLONS TOTAL ACID				15,204,168 GALLONS TOTAL FLUID, 25,491,500 POUNDS TOTAL PROPPANT					

Formation	Top
WOODFORD	9305

Were open hole logs run? No

Date last log run:

Were unusual drilling circumstances encountered? No

Explanation:

Other Remarks
OCC - THIS DOCUMENT IS ACCEPTED BASED ON THE DATA SUBMITTED NEITHER THE FINAL LOCATION EXCEPTION NOR THE FINAL MULTIUNIT ORDERS HAVE BEEN ISSUED.

Lateral Holes
Sec: 18 TWP: 9N RGE: 4W County: MCCLAIN SW SE SE SW 177 FSL 2282 FWL of 1/4 SEC Depth of Deviation: 8876 Radius of Turn: 708 Direction: 181 Total Length: 10228 Measured Total Depth: 19812 True Vertical Depth: 9386 End Pt. Location From Release, Unit or Property Line: 177

FOR COMMISSION USE ONLY
<div>1143711</div> <div>Status: Accepted</div>

API NO. 087-22234
OTC PROD. UNIT NO. 087-225839

PLEASE TYPE OR USE BLACK INK ONLY
NOTE:

Attach copy of original 1002A
if recompletion or reentry.

OKLAHOMA CORPORATION COMMISSION
Oil & Gas Conservation Division
Post Office Box 52000
Oklahoma City, Oklahoma 73152-2000
Rule 165:10-3-25

RECEIVED

Form 1002A
Rev. 2009

AUG 12 2019

OKLAHOMA CORPORATION
COMMISSION

☒ ORIGINAL
☐ AMENDED (Reason)

COMPLETION REPORT

TYPE OF DRILLING OPERATION

☐ STRAIGHT HOLE ☐ DIRECTIONAL HOLE ☒ HORIZONTAL HOLE
☐ SERVICE WELL

If directional or horizontal, see reverse for bottom hole location.

COUNTY	McClain	SEC	7	TWP	9N	RGE	4W
LEASE NAME	NIGHTHAWK 0718			WELL NO.	4H		
NW 1/4	SE 1/4	NE 1/4	NW 1/4	FNL 1/4 SEC	796	FWL OF 1/4 SEC	2,213
ELEVATION N Derrick	Ground	1,354	Latitude (if known)	35,274,207,958			
FL				Longitude (if known)	- 97.663099712		
OPERATOR NAME	EOG Resources, Inc.			OTC/OCC OPERATOR NO.	16231		
ADDRESS	3817 NW Expressway, Suite 500						
CITY	Oklahoma City	STATE	OK	ZIP	73112		

640 Acres

LOCATE WELL

COMPLETION TYPE

<input checked="" type="checkbox"/> SINGLE ZONE
<input type="checkbox"/> MULTIPLE ZONE
Application Date
<input type="checkbox"/> COMMINGLED
Application Date
LOCATION EXCEPTION ORDER
700051
INCREASED DENSITY ORDER NO.
695764, 700105

CASING & CEMENT (Form 1002C must be attached)

TYPE	SIZE	WEIGHT	GRADE	FEET	PSI	SAX	TOP OF CMT
CONDUCTOR							
SURFACE	9 - 5/8	36	J-55	1,214		480	SURFACE
INTERMEDIATE							
PRODUCTION *	5 - 1/2	20	P-110	19,808		2,640	8,832
LINER							
						TOTAL DEPTH	19,812

PACKER @ _____ BRAND & TYPE _____ PLUG @ _____ TYPE _____ PLUG @ _____ TYPE _____
PACKER @ _____ BRAND & TYPE _____ PLUG @ _____ TYPE _____ PLUG @ _____ TYPE _____

COMPLETION & TEST DATA BY PRODUCING FORMATION

FORMATION	WOODFORD
SPACING & SPACING ORDER NUMBER	640/632844,682713 - MU /698667 - L.O.
CLASS: Oil, Gas, Dry, Inj, Disp, Comm Disp, Svc	OIL
PERFORATED INTERVALS	9,600 - 19,714
ACID/VOLUME	TOTAL ACID - 1,665 GALS
FRACTURE TREATMENT (Fluids/Prop Amounts)	TOTAL FLUID - 15,204,168 GALS TOTAL PROP - 25,491,500 LBS

Min Gas Allowable (165:10-17-7) ☒ OR Gas Purchaser/Measurer
Initial Test Data Oil Allowable (165:10-13-3) First Sales Date 7/15/2019

INITIAL TEST DATE	7/18/2019
OIL-BBL/DAY	1,001
OIL-GRAVITY (API)	40
GAS-MCF/DAY	1,104
GAS-OIL RATIO CU FT/BBL	1,102
WATER-BBL/DAY	6,625
PUMPING OR FLOWING	FLOWING
INITIAL SHUT-IN PRESSURE	1,200
CHOKE SIZE	128
FLOW TUBING PRESSURE	490

AS SUBMITTED

A record of the formations drilled through, and pertinent remarks are presented on the reverse. I declare that I have knowledge of the contents of this report and am authorized by my organization to make this report, which was prepared by me or under my supervision and direction, with the data and facts stated herein to be true, correct, and complete to the best of my knowledge and belief.

SIGNATURE	Joni Reeder	DATE	8/12/2019	PHONE NUMBER	405-246-3100
3817 NW Expressway, Suite 500	Oklahoma City	OK	73112	EMAIL ADDRESS	joni_reeder@eogresources.com
ADDRESS	CITY	STATE	ZIP		

FORMATION RECORD

LEASE NAME NIGHTHAWK 0718 WELL NO. 4H

NAMES OF FORMATIONS	TOP
WOODFORD	MD 9,305

FOR COMMISSION USE ONLY	
ITD on file	<input type="checkbox"/> YES <input type="checkbox"/> NO
APPROVED	DISAPPROVED
2) Reject Codes <hr/> <hr/> <hr/> <hr/> <hr/>	

[illegible]

Other remarks:

640 Acres

A 10x10 grid representing 640 acres. The grid is divided into four 5x5 quadrants by a thick central cross. The text '640 Acres' is centered at the top of the grid.

Direction must be stated in degrees azimuth.
Please note, the horizontal drainhole and its end point must be located within the boundaries of the lease or spacing unit.

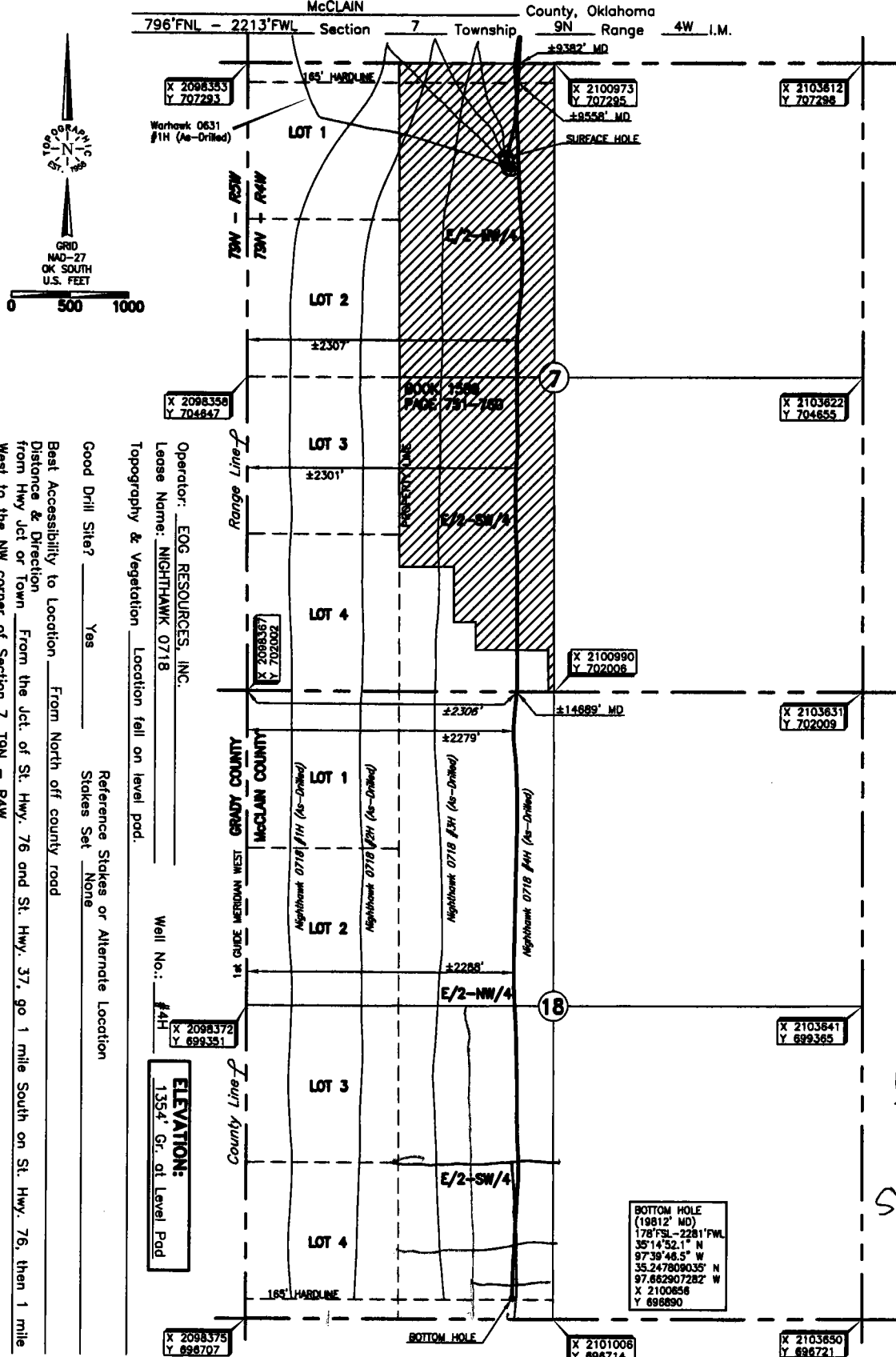
640 Acres

SEC	TWP	RGE	COUNTY			
Spot Location				Feet From 1/4 Sec Lines	FSL	FWL
1/4	1/4	1/4	1/4			
Measured Total Depth		True Vertical Depth		BHL From Lease, Unit, or Property Line:		

LATERAL #1				exhibit 22-2-1111			
SEC 18	TWP 9N	RGE 4W	COUNTY McClain				
Spot Location				Feet From 1/4 Sec Lines		FSL 178	FWL 2,282
SW 1/4	SE 1/4	SE 1/4	SW 1/4				
Depth of Deviation 8,876		Radius of Turn 708		Direction 181		Total Length 10,228	
Measured Total Depth 19,812		True Vertical Depth 9,386		BHL From Lease, Unit, or Property Line: 178			

SEC	TWP	RGE	COUNTY			
Spot Location						
1/4	1/4	1/4	1/4	Feet From 1/4 Sec Lines	FSL	FWL
Depth of Deviation	Radius of Turn		Direction	Total Length		
Measured Total Depth		True Vertical Depth	BHL From Lease, Unit, or Property Line:			

SEC	TWP	RGE	COUNTY			
Spot Location						
1/4	1/4	1/4	1/4	Feet From 1/4 Sec Lines	FSL	FWL
Depth of Deviation		Radius of Turn		Direction	Total Length	
Measured Total Depth		True Vertical Depth		BHL From Lease, Unit, or Property Line:		



Operator: EOG RESOURCES, INC.
Lease Name: NIGHTHAWK 0718
Topography & Vegetation: Location fell on level pod.
Good Drill Siter? Yes
Best Accessibility to Location: From North off county road
Distance & Direction: From the Jct. of St. Hwy. 76 and St. Hwy. 37, go 1 mile South on St. Hwy. 76, then 1 mile West to the NW corner of Section 7, T9N - R4W.
Reference Stakes or Alternate Location: Stakes Set None
Well No.: #4H
ELEVATION: 1354' Gr. at Level Pod

DATUM: NAD-27
LAT: 35°16'27.1" N
LONG: 97°39'47.2" W
LAT: 35.274207953° N
LONG: 97.663099712° W
STATE PLANE
COORDINATES: (US Feet)
ZONE: OK SOUTH
X: 2100567
Y: 706499

Date of Drawing: June 10, 2019
Project # 124508 Date Staked: March 06, 2019 ST

FINAL AS-DRILLED PLAT

AS-DRILLED INFORMATION
FURNISHED BY EOG RESOURCES, INC.

BHL
SW SE SE SW