

Oklahoma Corporation Commission
Oil & Gas Conservation Division
Post Office Box 52000
Oklahoma City, Oklahoma 73152-2000
Rule 165: 10-3-25

Form 1002A

API No.: 35015233070000

Completion Report

Spud Date: January 02, 2019

OTC Prod. Unit No.: 015-225330-0-0000

Drilling Finished Date: February 20, 2019

1st Prod Date: March 13, 2019

Completion Date: March 13, 2019

Drill Type: HORIZONTAL HOLE

Min Gas Allowable: Yes

Well Name: 5-D "A" 18/7 1HXL

Purchaser/Measurer: ENABLE

Location: CADD0 18 8N 9W
SE SE SW SW
240 FSL 1000 FWL of 1/4 SEC
Latitude: 35.16115 Longitude: -98.19326
Derrick Elevation: 1428 Ground Elevation: 1398

First Sales Date: 04/11/2019

Operator: UNIT PETROLEUM COMPANY 16711
PO BOX 702500
8200 S UNIT DRIVE
TULSA, OK 74170-2500

Completion Type		Location Exception		Increased Density	
X	Single Zone	Order No		Order No	
	Multiple Zone	686852		There are no Increased Density records to display.	
	Commingled				

Casing and Cement							
Type	Size	Weight	Grade	Feet	PSI	SAX	Top of CMT
SURFACE	9 5/8	40	J-55	1960	1500	551	SURFACE
PRODUCTION	5 1/2	20	P-110	20528	8000	2577	8000

Liner								
Type	Size	Weight	Grade	Length	PSI	SAX	Top Depth	Bottom Depth
There are no Liner records to display.								

Total Depth: 20573

Packer		Plug	
Depth	Brand & Type	Depth	Plug Type
There are no Packer records to display.		There are no Plug records to display.	

Initial Test Data

Test Date	Formation	Oil BBL/Day	Oil-Gravity (API)	Gas MCF/Day	Gas-Oil Ratio Cu FT/BBL	Water BBL/Day	Pumpin or Flowing	Initial Shut-In Pressure	Choke Size	Flow Tubing Pressure
Apr 13, 2019	MARCHAND	600	38	230	383	4800	FLOWING	2995	46/64	1159

Completion and Test Data by Producing Formation

Formation Name: MARCHAND

Code: 405MRCD

Class: OIL

Spacing Orders

Order No	Unit Size
586875	640
683411	640
686851	MULTIUNIT

Perforated Intervals

From	To
11163	20573

Acid Volumes

2,736 BARRELS 15% HCL ACID

Fracture Treatments

47 STAGES - 11,771,150 POUNDS SAND, 236,658 BARRELS SLICKWATER
--

Formation	Top
AVANT LIME	8318
UPPER WADE SAND	8618
LOWER WADE SAND	8846
MEDRANO	9376
HOGSHOOTER	10044
LOWER MARCHAND SAND (PAY)	11180

Were open hole logs run? No

Date last log run:

Were unusual drilling circumstances encountered? No

Explanation:

Other Remarks

OCC - THIS DOCUMENT IS ACCEPTED BASED ON THE DATA SUBMITTED NEITHER THE FINAL LOCATION EXCEPTION NOR THE FINAL MULTIUNIT ORDERS HAVE BEEN ISSUED.

Lateral Holes

Sec: 7 TWP: 8N RGE: 9W County: CADDO

NW NE NE NW

179 FNL 2215 FWL of 1/4 SEC

Depth of Deviation: 10050 Radius of Turn: 561 Direction: 359 Total Length: 9410

Measured Total Depth: 20573 True Vertical Depth: 10407 End Pt. Location From Release, Unit or Property Line: 179

FOR COMMISSION USE ONLY

1142825

Status: Accepted

API NO. 01523307
OTC PROD. UNIT NO. 015225330

(PLEASE TYPE OR USE BLACK INK ONLY)

OKLAHOMA CORPORATION COMMISSION
Oil & Gas Conservation Division
Post Office Box 52000
Oklahoma City, Oklahoma 73152-2000
Rule 165:10-3-25

RECEIVED

JUN 10 2019

Oklahoma Corporation
Commission

Form 1002A
Rev. 2009

☒ ORIGINAL
☐ AMENDED (Reason)

TYPE OF DRILLING OPERATION

☐ STRAIGHT HOLE ☐ DIRECTIONAL HOLE ☒ HORIZONTAL HOLE
☐ SERVICE WELL

If directional or horizontal, see reverse for bottom hole location.

COUNTY CADDO SEC 18 TWP 8N RGE 9W
LEASE NAME 5-D "A" 18/7 WELL NO. 1HXL
SE 1/4 SE 1/4 SW 1/4 SW 1/4 FSL OF 1/4 SEC 240 FWL OF 1/4 SEC 1000
ELEVATION Derrick FL 1428 Ground 1398 Latitude (if known) 35.16115 Longitude (if known) -98.19326
OPERATOR NAME UNIT PETROLEUM COMPANY OTC / OCC OPERATOR NO. 16711
ADDRESS PO BOX 702500
CITY TULSA STATE OK ZIP 74170-2500

COMPLETION REPORT

SPUD DATE 1/2/19
DRLG FINISHED DATE 2/20/19
DATE OF WELL COMPLETION 3/13/19
1st PROD DATE 3/13/19
RECOMP DATE
Longitude (if known) -98.19326

640 Acres
W E
LOCATE WELL

COMPLETION TYPE

☒ SINGLE ZONE
☐ MULTIPLE ZONE
Application Date
COMINGLED
Application Date
LOCATION EXCEPTION ORDER NO. 686852 1.0
INCREASED DENSITY ORDER NO.

CASING & CEMENT (Attach Form 1002C)

TYPE	SIZE	WEIGHT	GRADE	FEET	PSI	SAX	TOP OF CMT
CONDUCTOR							
SURFACE	9 5/8	40	J-55	1960	1500	551	SURFACE
INTERMEDIATE							
PRODUCTION	5 1/2	20	P-110	20528	8000	2577	8000
LINER							
TOTAL DEPTH							20,573

PACKER @ BRAND & TYPE PLUG @ TYPE PLUG @ TYPE
PACKER @ BRAND & TYPE PLUG @ TYPE PLUG @ TYPE

COMPLETION & TEST DATA BY PRODUCING FORMATION

FORMATION	MARCHAND						
SPACING & SPACING	683411 (640), 586875 (640)						
ORDER NUMBER	50. 686851 (4280) Multiumit						
CLASS: Oil, Gas, Dry, Inj, Disp, Comm Disp, Svc	OIL						
	11163-20573						
PERFORATED INTERVALS							
ACID/VOLUME	2736 BBLS 15% HCL ACID						
	11,771,150 #s sand						
FRACTURE TREATMENT (Fluids/Prop Amounts)	236,658 bbls slickwater						
	47 stages						

Reported to FracFocus

☒ Min Gas Allowable (165:10-17-7) Gas Purchaser/Measurer ENABLE
OR First Sales Date 4/11/2019
☐ Oil Allowable (165:10-13-3)

INITIAL TEST DATA

INITIAL TEST DATE	4/13/2019						
OIL-BBL/DAY	600						
OIL-GRAVITY (API)	38						
GAS-MCF/DAY	230						
GAS-OIL RATIO CU FT/BBL	383						
WATER-BBL/DAY	4800						
PUMPING OR FLOWING	FLOWING						
INITIAL SHUT-IN PRESSURE	2995						
CHOKE SIZE	46/64						
FLOW TUBING PRESSURE	1159						

AS SUBMITTED

A record of the formations drilled through, and pertinent remarks are presented on the reverse. I declare that I have knowledge of the contents of this report and am authorized by my organization to make this report, which was prepared by me or under my supervision and direction, with the data and facts stated herein to be true, correct, and complete to the best of my knowledge and belief.

SIGNATURE ASAD KHAN 6/5/2019 918-493-7700
PO BOX 702500 TULSA OK 74170-2500 DATE PHONE NUMBER
ADDRESS CITY STATE ZIP EMAIL ADDRESS cheryl.foley@unitcorp.com

Give formation names and tops, if available, or descriptions and thickness of formations drilled through. Show intervals cored or drillstem tested.

FOR COMMISSION USE ONLY	
ITD on file	<input type="checkbox"/> YES <input type="checkbox"/> NO
APPROVED	DISAPPROVED
2) Reject Codes	

Were open hole logs run? ___ yes X no

Date Last log was run _____

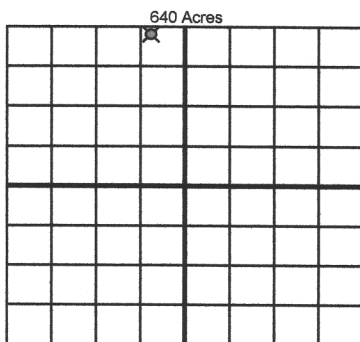
Was CO₂ encountered? ___ yes X no at what depths? _____

Was H₂S encountered? ___ yes X no at what depths? _____

Were unusual drilling circumstances encountered? ___ yes X no

If yes, briefly explain below

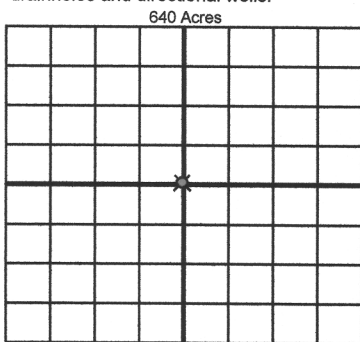
Other remarks:



If more than three drainholes are proposed, attach a separate sheet indicating the necessary information.

Direction must be stated in degrees azimuth.
Please note, the horizontal drainhole and its end point must be located within the boundaries of the lease or spacing unit.

Directional surveys are required for all drainholes and directional wells.



BOTTOM HOLE LOCATION FOR DIRECTIONAL HOLE

SEC	TWP	RGE	COUNTY
Spot Location			
1/4	1/4	1/4	1/4
Measured Total Depth		True Vertical Depth	Feet From 1/4 Sec Lines
			FSL
		BHL From Lease, Unit, or Property Line:	

BOTTOM HOLE LOCATION FOR HORIZONTAL HOLE: (LATERALS)

LATERAL #1

SEC 7	TWP 8N	RGE 9W	COUNTY CADDO				
Spot Location NW 1/4 NE 1/4			NE 1/4 NW 1/4		Feet From 1/4 Sec Lines	FNL 165	FWL 2200
Depth of Deviation 10,050		Radius of Turn 561		Direction 359	Total Length 9,410		
Measured Total Depth 20,573		True Vertical Depth 10,407		BHL From Lease, Unit, or Property Line: 165 179			

LATERAL #2

SEC	TWP	RGE	COUNTY			
Spot Location						
1/4	1/4	1/4	1/4	Feet From 1/4 Sec Lines	FSL	FWL
Depth of Deviation		Radius of Turn	Direction		Total Length	
Measured Total Depth		True Vertical Depth	BHL From Lease, Unit, or Property Line:			

LATERAL #3

SEC	TWP	RGE	COUNTY			
Spot Location			Feet From 1/4 Sec Lines		FSL	FWL
1/4	1/4	1/4	1/4			
Depth of Deviation		Radius of Turn	Direction	Total Length		
Measured Total Depth		True Vertical Depth	BHL From Lease, Unit, or Property Line:			