

Oklahoma Corporation Commission
Oil & Gas Conservation Division
Post Office Box 52000
Oklahoma City, Oklahoma 73152-2000
Rule 165: 10-3-25

Form 1002A

API No.: 35087222010000

Completion Report

Spud Date: January 08, 2019

OTC Prod. Unit No.: 087-225216-0-0000

Drilling Finished Date: February 02, 2019

1st Prod Date: March 02, 2019

Completion Date: March 02, 2019

Drill Type: HORIZONTAL HOLE

Min Gas Allowable: Yes

Well Name: SPITFIRE 0817 1H

Purchaser/Measurer: ENABLE GATHERING &
PROCESSING

Location: MCCLAIN 17 9N 4W
NW SE SE SE
465 FSL 354 FEL of 1/4 SEC
Derrick Elevation: 0 Ground Elevation: 1274

First Sales Date: 03/02/2019

Operator: EOG RESOURCES INC 16231

3817 NW EXPRESSWAY STE 500
OKLAHOMA CITY, OK 73112-1483

Completion Type		Location Exception		Increased Density	
X	Single Zone	Order No		Order No	
	Multiple Zone	697249		N/A	
	Commingled				

Casing and Cement							
Type	Size	Weight	Grade	Feet	PSI	SAX	Top of CMT
SURFACE	9 5/8	36	J-55	1168		440	SURFACE
PRODUCTION	5 1/2	20	P-110	19345		2660	8390

Liner								
Type	Size	Weight	Grade	Length	PSI	SAX	Top Depth	Bottom Depth
There are no Liner records to display.								

Total Depth: 19358

Packer		Plug	
Depth	Brand & Type	Depth	Plug Type
There are no Packer records to display.		There are no Plug records to display.	

Initial Test Data										
Test Date	Formation	Oil BBL/Day	Oil-Gravity (API)	Gas MCF/Day	Gas-Oil Ratio Cu FT/BBL	Water BBL/Day	Pumpin or Flowing	Initial Shut-In Pressure	Choke Size	Flow Tubing Pressure
Mar 05, 2019	WOODFORD	67	40	164	2448	5368	FLOWING	1150	64	1612

Completion and Test Data by Producing Formation

Formation Name: WOODFORD

Code: 319WDFD

Class: OIL

Spacing Orders

Order No	Unit Size
691762	640
693653	640
697248	MULTIUNIT

Perforated Intervals

From	To
9298	19244

Acid Volumes

5,000 GALLONS 7.5% HCL TOTAL ACID

Fracture Treatments

15,926,548 GALLONS TOTAL FLUID, 24,894,585 POUNDS TOTAL PROPPANT
--

Formation	Top
WOODFORD	9122

Were open hole logs run? Yes

Date last log run: January 13, 2019

Were unusual drilling circumstances encountered? No

Explanation:

Other Remarks

DRILLED GEOLOGIC PILOT HOLE TO 9,513' MD. PLUGGED BACK WITH CEMENT, PLUG #1 FROM 9,000' - 9,513' AND PLUG #2 FROM 8,500' - 9,000'. SIDETRACKED OFF CEMENT PLUG @ 8,592' MD AND DRILLED LATERAL TO 19,358' MD. OCC - THIS DOCUMENT IS ACCEPTED BASED ON THE DATA SUBMITTED NEITHER THE FINAL LOCATION EXCEPTION NOR THE FINAL MULTIUNIT ORDERS HAVE BEEN ISSUED.

Lateral Holes

Sec: 20 TWP: 9N RGE: 4W County: MCCLAIN

NE NE NE NE

22 FNL 271 FEL of 1/4 SEC

Depth of Deviation: 8710 Radius of Turn: 0 Direction: 68 Total Length: 0

Measured Total Depth: 9513 True Vertical Depth: 9471 End Pt. Location From Release, Unit or Property Line: 22

Sec: 8 TWP: 9N RGE: 4W County: MCCLAIN

NW NE NE NE

177 FNL 414 FEL of 1/4 SEC

Depth of Deviation: 8710 Radius of Turn: 674 Direction: 356 Total Length: 9974

Measured Total Depth: 19358 True Vertical Depth: 8809 End Pt. Location From Release, Unit or Property Line: 177

FOR COMMISSION USE ONLY

Status: Accepted

1142777

API NO. 087-22201
OTC PROD. UNIT NO. 087-225216

PLEASE TYPE OR USE BLACK INK ONLY
NOTE:

Attach copy of original 1002A
if recompletion or reentry.

OKLAHOMA CORPORATION COMMISSION
Oil & Gas Conservation Division
Post Office Box 52000
Oklahoma City, Oklahoma 73152-2000
Rule 165:10-3-25

RECEIVED

MAY 01 2019

OKLAHOMA CORPORATION
COMMISSION

Form 1002A
Rev. 2009

☒ ORIGINAL
☐ AMENDED (Reason)

COMPLETION REPORT

TYPE OF DRILLING OPERATION
☐ STRAIGHT HOLE ☐ DIRECTIONAL HOLE ☒ HORIZONTAL HOLE
☐ SERVICE WELL

If directional or horizontal, see reverse for bottom hole location.

COUNTY	McClain	SEC	17	TWP	9N	RGE	4W	SPUD DATE	1/8/2019
LEASE NAME	SPITFIRE 0817				WELL NO.	1H	DATE OF WELL COMPLETION	3/2/2019	
NW 1/4 SE 1/4 SE 1/4 SE 1/4	FSL OF 1/4 SEC	465	FEL 1/4 SEC	354	1st PROD DATE	3/2/2019			
ELEVATION N Derrick FL	Ground	1,274	Latitude (if known)	Longitude (if known)					
OPERATOR NAME	EOG Resources, Inc.				OTC/OCC OPERATOR NO.	16231			
ADDRESS	3817 NW Expressway, Suite 500								
CITY	Oklahoma City	STATE	OK	ZIP	73112				

640 Acres

W E

LOCATE WELL

COMPLETION TYPE

<input checked="" type="checkbox"/> SINGLE ZONE
<input type="checkbox"/> MULTIPLE ZONE
Application Date
<input type="checkbox"/> COMMINGLED
Application Date
LOCATION EXCEPTION ORDER
INCREASED DENSITY ORDER NO.

CASING & CEMENT (Form 1002C must be attached)

TYPE	SIZE	WEIGHT	GRADE	FEET	PSI	SAX	TOP OF CMT
CONDUCTOR							
SURFACE	9 5/8	36	J-55	1,168		440	SURFACE
INTERMEDIATE							
PRODUCTION *	5 1/2	20	P-110	19,345		2,660	8,390
LINER							
TOTAL DEPTH							19,358

PACKER @ _____ BRAND & TYPE _____ PLUG @ _____ TYPE _____ PLUG @ _____ TYPE _____
PACKER @ _____ BRAND & TYPE _____ PLUG @ _____ TYPE _____ PLUG @ _____ TYPE _____

COMPLETION & TEST DATA BY PRODUCING FORMATION

FORMATION	WOODFORD	319WDFD	TO	Reported to Frac Focus
SPACING & SPACING ORDER NUMBER	640/691762, 693653, MU - 697248			
CLASS: Oil, Gas, Dry, Inj, Disp, Comm Disp, Svc	oil			
PERFORATED INTERVALS	9,298 - 19,244			
ACID/VOLUME	TOTAL ACID - 5,000 GALS 7.5% HCL			
FRACTURE TREATMENT (Fluids/Prop Amounts)	TOTAL FLUID - 15,926,548 GALS TOTAL PROP - 24,894,585 LBS			

☒ Min Gas Allowable (165:10-17-7)
OR
☐ Oil Allowable (165:10-13-3)

Gas Purchaser/Measurer
First Sales Date

Enable Gathering & Processing
3/2/2019

INITIAL TEST DATA

INITIAL TEST DATE	3/5/2019
OIL-BBL/DAY	67
OIL-GRAVITY (API)	40
GAS-MCF/DAY	164
GAS-OIL RATIO CU FT/BBL	2,448
WATER-BBL/DAY	5,368
PUMPING OR FLOWING	FLOWING
INITIAL SHUT-IN PRESSURE	1,150
CHOKE SIZE	64
FLOW TUBING PRESSURE	1612

AS SUBMITTED

A record of the formations drilled through, and pertinent remarks are presented on the reverse. I declare that I have knowledge of the contents of this report and am authorized by my organization to make this report, which was prepared by me or under my supervision and direction, with the data and facts stated herein to be true, correct, and complete to the best of my knowledge and belief.

SIGNATURE	Joni Reeder	DATE	5/1/2019	PHONE NUMBER	405-246-3100
ADDRESS	3817 NW Expressway, Suite 500	CITY	Oklahoma City	STATE	OK
		ZIP	73112	EMAIL ADDRESS	joni_reeder@eogresources.com

PLEASE TYPE OR USE BLACK INK ONLY

FORMATION RECORD

Give formation names and tops, if available, or descriptions and thickness of formations drilled through. Show intervals cored or drillstem tested.

LEASE NAME

SPITFIRE 0817

WELL NO.

1H

NAMES OF FORMATIONS	TOP
WOODFORD MD	9,122

FOR COMMISSION USE ONLY	
ITD on file	<input type="checkbox"/> YES <input type="checkbox"/> NO
APPROVED	DISAPPROVED
2) Reject Codes	

Were open hole logs run?	<input checked="" type="checkbox"/> yes <input type="checkbox"/> no
Date Last log was run	1/13/2019
Was CO ₂ encountered?	<input type="checkbox"/> yes <input checked="" type="checkbox"/> no at what depths? <input type="text"/>
Was H ₂ S encountered?	<input type="checkbox"/> yes <input checked="" type="checkbox"/> no at what depths? <input type="text"/>
Were unusual drilling circumstances encountered?	<input type="checkbox"/> yes <input checked="" type="checkbox"/> no
If yes, briefly explain below:	

Other remarks:

Drilled geologic pilot hole to 9,513' MD. Plugged back with cement, plug #1 from 9,000' - 9,513' and plug #2 from 8,500' - 9,000'. Sidetracked off cement plug @ 8,592' MD and drilled lateral to 19,358' MD.

640 Acres

If more than three drainholes are proposed, attach a separate sheet indicating the necessary information.

Direction must be stated in degrees azimuth.
Please note, the horizontal drainhole and its end point must be located within the boundaries of the lease or spacing unit.

Directional surveys are required for all drainholes and directional wells.

640 Acres

BOTTOM HOLE LOCATION FOR DIRECTIONAL HOLE

SEC	TWP	RGE	COUNTY
Spot Location			
1/4	1/4	1/4	1/4
Measured Total Depth		True Vertical Depth	BHL From Lease, Unit, or Property Line:

BOTTOM HOLE LOCATION FOR HORIZONTAL HOLE: (LATERALS)

LATERAL #1 PILOT HOLE

SEC	TWP	RGE	COUNTY
20	9N	4W	MCCLAIN
Spot Location			
NE 1/4	NE 1/4	NE 1/4	NE 1/4
Depth of Deviation		Radius of Turn	Direction
8,710			68
Measured Total Depth		True Vertical Depth	BHL From Lease, Unit, or Property Line:
9,513		9,471	22

LATERAL #2 SIDETRACK

SEC	TWP	RGE	COUNTY
8	9N	4W	MCCLAIN
Spot Location			
NW 1/4	NE 1/4	NE 1/4	NE 1/4
Depth of Deviation		Radius of Turn	Direction
8,710		674	356
Measured Total Depth		True Vertical Depth	BHL From Lease, Unit, or Property Line:
19,358		8,809	177

LATERAL #3

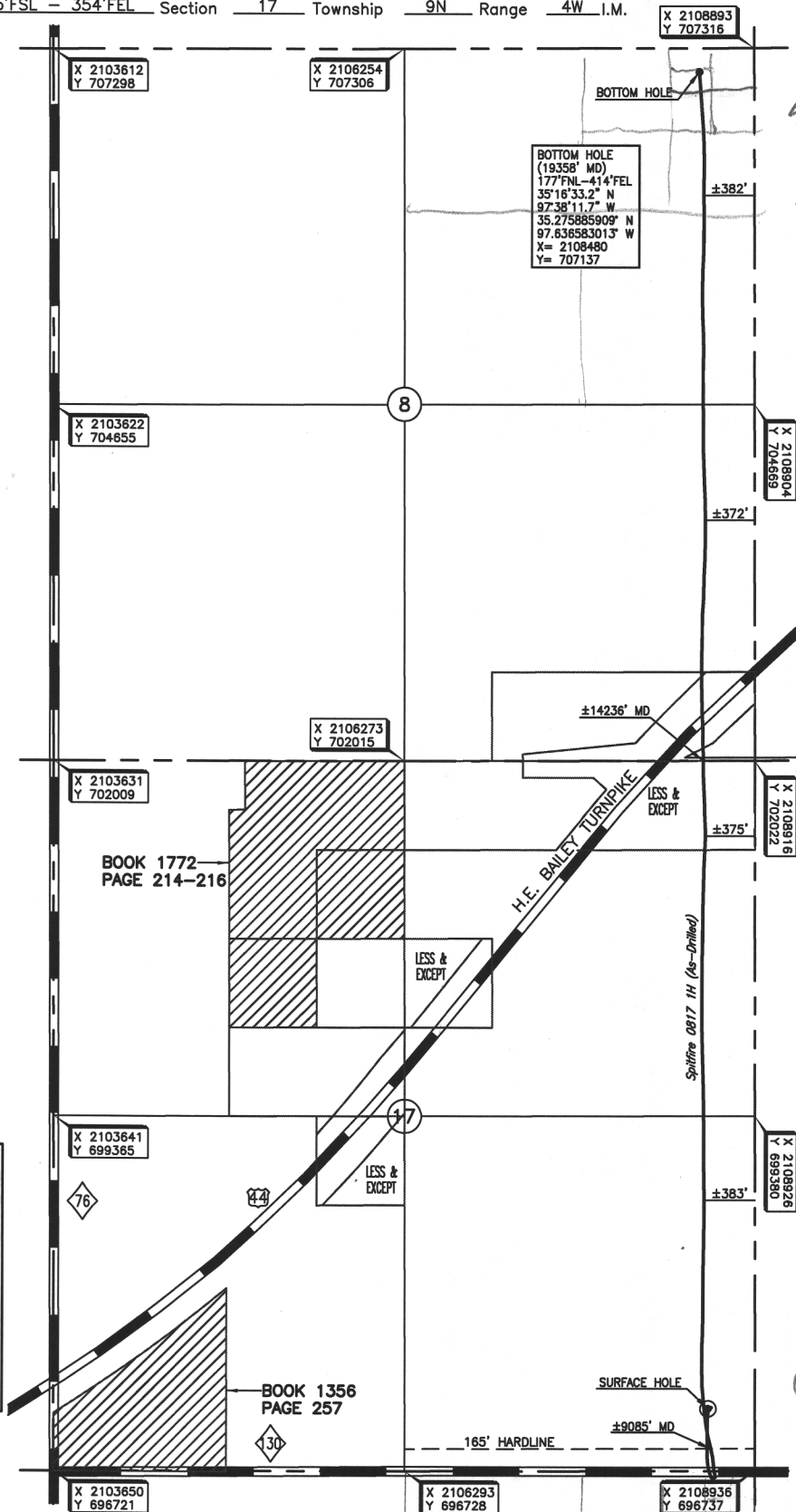
SEC	TWP	RGE	COUNTY
Spot Location			
1/4	1/4	1/4	1/4
Depth of Deviation		Radius of Turn	Direction
Measured Total Depth		True Vertical Depth	BHL From Lease, Unit, or Property Line:

MCCLAIN County, Oklahoma

465' FSL - 354' FEL Section 17 Township 9N Range 4W I.M.



Operator: EOG RESOURCES, INC.
 Lease Name: SPLITFIRE 0817
 Topography & Vegetation: Location fell in grass pasture ±32' N. of E-W fence, ±297' NE of barn, & ±382' NE of house
 Good Drill Site? Yes
 Best Accessibility to Location: From State Highway 130 south of well location.
 Distance & Direction: From the Jct. of St. Hwy. 76 & St. Hwy. 130 at the Southwest Corner of Section 17, go East ±1.0 mile to the Southeast Corner of Section 17, T9N-R4W.
 Reference Stakes or Alternate Location: Stakes Set None
 Well No.: 1H
 ELEVATION: 1274' Gr. at Stake



*Sidetrack to TD
NW NE NE NE*

*Pilot Hole
22' FNL
271' FEL
NE NE NE NE*

DATUM: NAD-27
 LAT: 35°14'54.9" N
 LONG: 97°38'10.9" W
 LAT: 35.248586445° N
 LONG: 97.636368124° W
 STATE PLANE
 COORDINATES (US FEET):
 ZONE: OK SOUTH
 X: 2108580
 Y: 697201

Project # 123489 Date of Drawing: Jan. 29, 2019
 Date Staked: July 9, 2018 JP

FINAL AS-DRILLED PLAT

AS-DRILLED INFORMATION
 FURNISHED BY EOG RESOURCES, INC.

Sec. 20