

Oklahoma Corporation Commission
Oil & Gas Conservation Division
Post Office Box 52000
Oklahoma City, Oklahoma 73152-2000
Rule 165: 10-3-25

Form 1002A

API No.: 35073263870000

Completion Report

Spud Date: December 31, 2018

OTC Prod. Unit No.: 073-225146-0-0000

Drilling Finished Date: January 18, 2019

1st Prod Date: March 05, 2019

Completion Date: February 24, 2019

Drill Type: HORIZONTAL HOLE

Min Gas Allowable: Yes

Well Name: SMITH 24-17-7 1HC

Purchaser/Measurer: CHESAPEAKE OPERATING LLC

First Sales Date: 03/06/2019

Location: KINGFISHER 24 17N 7W
SW SW SE SW
220 FSL 1260 FEL of 1/4 SEC
Latitude: 35.928052 Longitude: -97.902626
Derrick Elevation: 1111 Ground Elevation: 1084

Operator: CHESAPEAKE OPERATING LLC 17441
PO BOX 18496
6100 N WESTERN AVE
OKLAHOMA CITY, OK 73154-0496

Completion Type		Location Exception		Increased Density	
X	Single Zone	Order No		Order No	
	Multiple Zone	694235		688999	
	Commingled	694513			

Casing and Cement							
Type	Size	Weight	Grade	Feet	PSI	SAX	Top of CMT
SURFACE	9 5/8	36	J-55	1499		595	SURFACE
PRODUCTION	7	26	P-110EC	7312		445	2400

Liner								
Type	Size	Weight	Grade	Length	PSI	SAX	Top Depth	Bottom Depth
LINER	4 1/2	13.5	P-110	10242	0	905	7046	17288

Total Depth: 17290

Packer		Plug	
Depth	Brand & Type	Depth	Plug Type
There are no Packer records to display.		There are no Plug records to display.	

Initial Test Data

Test Date	Formation	Oil BBL/Day	Oil-Gravity (API)	Gas MCF/Day	Gas-Oil Ratio Cu FT/BBL	Water BBL/Day	Pumpin or Flowing	Initial Shut-In Pressure	Choke Size	Flow Tubing Pressure
Apr 13, 2019	OSWEGO	73	41.87	47	644	178	PUMPING			42

Completion and Test Data by Producing Formation

Formation Name: OSWEGO

Code: 404OSWG

Class: OIL

Spacing Orders

Order No	Unit Size
671353	640
688920	320
694234	MULTIUNIT

Perforated Intervals

From	To
9202	17218

Acid Volumes

439,176 GALLONS ACID

Fracture Treatments

69,108 BARRELS FLUIDS

Formation	Top
OSWEGO	7197

Were open hole logs run? No

Date last log run:

Were unusual drilling circumstances encountered? No

Explanation:

Other Remarks

EXCEPTION TO THE RULE ORDER NUMBER 694236

Lateral Holes

Sec: 13 TWP: 17N RGE: 7W County: KINGFISHER

NW NW NE NW

279 FNL 1647 FWL of 1/4 SEC

Depth of Deviation: 6038 Radius of Turn: 711 Direction: 358 Total Length: 10093

Measured Total Depth: 17290 True Vertical Depth: 6749 End Pt. Location From Release, Unit or Property Line: 279

FOR COMMISSION USE ONLY

Status: Accepted

1142814

API NO. 073-26387
OTC PROD.
UNIT NO. 073-225146

PLEASE TYPE OR USE BLACK INK ONLY
NOTE:
Attach copy of original 1002A if recompletion or reentry.

OKLAHOMA CORPORATION COMMISSION

Oil & Gas Conservation Division

Post Office Box 52000

Oklahoma City, Oklahoma 73152-2000

Rule 165:10-3-25

RECEIVED

Form 1002A

Rev. 2009

MAY 06 2019

Oklahoma Corporation
Commission

☒ ORIGINAL
☐ AMENDED
Reason Amended

TYPE OF DRILLING OPERATION

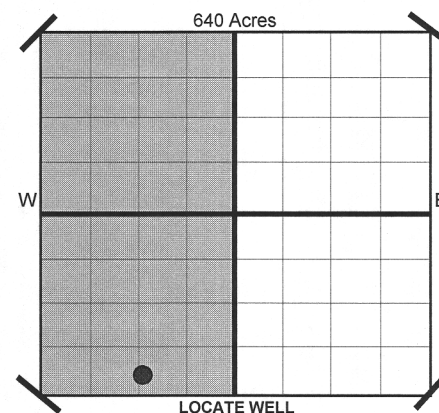
☐ STRAIGHT HOLE ☐ DIRECTIONAL HOLE ☒ HORIZONTAL HOLE

If directional or horizontal, see reverse for bottom hole location.

COUNTY Kingfisher SEC 24 TWP 17N RGE 7W
LEASE NAME Smith 24-17-7
SHL SW 1/4 SW 1/4 SE 1/4 SW 1/4 FSL 220 WELL NO. 1HC
ELEVATION Derrick Fl 1,111 Ground 1,084 Latitude (if Known) 35.928052 Longitude (if Known) -97.902626
OPERATOR NAME CHESAPEAKE OPERATING, L.L.C. OTC/OCC OPERATOR NO. 17441
ADDRESS P.O. BOX 18496
CITY OKLAHOMA CITY STATE OK ZIP 73154

COMPLETION REPORT

SPUD DATE 12/31/2018
DRLG FINISHED DATE 1/18/2019
DATE OF WELL COMPLETION 2/24/2019
1ST PROD DATE 3/5/2019
RECOMP DATE
Longitude (if Known) -97.902626



COMPLETION TYPE

☒ SINGLE ZONE
☐ MULTIPLE ZONE
Application Date
COMINGLED
Application Date
LOCATION 694513 / 694235
EXCEPTION ORDER NO. 688999
INCREASED DENSITY
ORDER NO.

CASING & CEMENT (Form 1002C must be attached)

TYPE	SIZE	WEIGHT	GRADE	FEET	PSI	SAX	TOP
CONDUCTOR							
SURFACE	9-5/8"	36#	J-55	1,499		595	Surface
INTERMEDIATE							
PRODUCTION	7"	26#	P-110EC	7,312		445	2,400
LINER	4-1/2"	13.5	P-110	7,046-17,288		905	7,046
TOTAL DEPTH							17,290

PACKER @ BRAND & TYPE
PACKER @ BRAND & TYPE

PLUG @ TYPE PLUG @ TYPE
PLUG @ TYPE PLUG @ TYPE

COMPLETION & TEST DATA BY PRODUCING FORMATION

FORMATION	Oswego	Multiunit						Reported to Frac Focus
SPACING & SPACING ORDER NUMBER	640 / 320 671353 / 688920	694234 F.D.						
CLASS: Oil, Gas, Dry, Inj. Disp, Comm Disp, Svc	Oil							
PERFORATED INTERVALS	9,202 - 17,218							
ACID/VOLUME	439,176 gals acid							
FRACTURE TREATMENT (Fluids/Prop Amounts)	69,108 bbls fluids							

Minimum Gas Allowable (165:10-17-7)

Gas Purchaser/Measurer

Chesapeake Operating, L.L.C.

☒

OR

1st Sales Date

3/6/2019

INITIAL TEST DATA

Oil Allowable (165:10-13-3)

INITIAL TEST DATE	4/13/2019						
OIL-BBL/DAY	73						
OIL-GRAVITY (API)	41.87						
GAS-MCF/DAY	47						
GAS-OIL RATIO CU FT/BBL	644						
WATER-BBL/DAY	178						
PUMPING OR FLOWING	Pumping						
INITIAL SHUT-IN PRESSURE							
CHOKE SIZE							
FLOW TUBING PRESSURE	42						

AS SUBMITTED

A record of the formations drilled through, and pertinent remarks are presented on the reverse. I declare that I have knowledge of the contents of this report and am authorized by my organization to make this report, which was prepared by me or under my supervision and direction, with the data and facts stated herein to be true, correct, and complete to the best of my knowledge and belief.

Juanita Cooper
SIGNATURE
P.O. BOX 18496
OKLAHOMA CITY
OK
STATE
405-848-8000
PHONE NUMBER
5/3/2019
DATE
juanita.cooper@chk.com
EMAIL ADDRESS

PLEASE TYPE OR USE BLACK INK ONLY
FORMATION RECORD

Give formation names and tops, if available, or descriptions and thickness of formations drilled through. Show intervals cored or drillstem tested.

LEASE NAME Smith 24-17-7

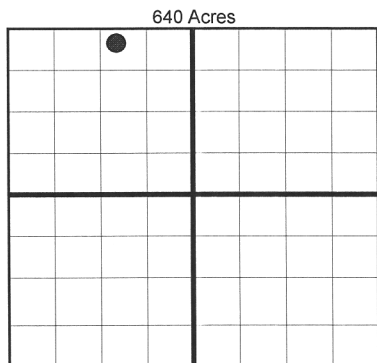
WELL NO. 1HC

NAMES OF FORMATIONS	TOP
Oswego	7,197

FOR COMMISSION USE ONLY	
ITD on file <input type="checkbox"/> YES <input type="checkbox"/> NO	
APPROVED _____	DISAPPROVED _____
2) Reject Codes	

Were open hole logs run? _____ yes <input checked="" type="checkbox"/> no
Date last log was run <u>N/A</u>
Was CO ₂ encountered? _____ yes <input checked="" type="checkbox"/> no at what depths?
Was H ₂ S encountered? _____ yes <input checked="" type="checkbox"/> no at what depths?
Were unusual drilling circumstances encountered? _____ yes <input checked="" type="checkbox"/> no
If yes, briefly explain.

Other remarks: Exception to the Rule Order No. 694236



BOTTOM HOLE LOCATION FOR DIRECTIONAL HOLE

SEC	TWP	RGE	COUNTY
Spot Location	1/4	1/4	1/4
Measured Total Depth	True Vertical Depth		BHL From Lease, Unit, or Property Line:

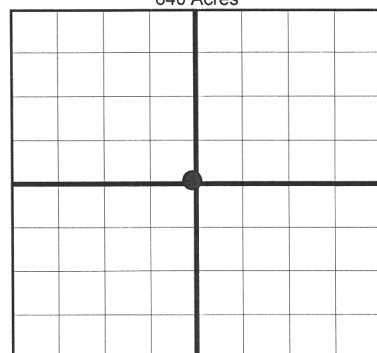
BOTTOM HOLE LOCATION FOR HORIZONTAL HOLE: (LATERALS)

SEC	TWP	RGE	COUNTY	Kingfisher		
13	17N	7W				
Spot Location	NW 1/4	NE 1/4	NW 1/4	Feet From 1/4 Sec Lines	FSL	FWL
Depth of Deviation	6,038	Radius of Turn	711	Direction	358	Total Length
Measured Total Depth	17,290	True Vertical Depth	6,749	BHL From Lease, Unit, or Property Line:		
				279		

If more than three drainholes are proposed, attach a separate sheet indicating the necessary information.

Direction must be stated in degrees azimuth. Please note, the horizontal drainhole and its end point must be located within the boundaries of the lease or spacing unit.

Directional surveys are required for all drainholes and directional wells.



LATERAL #2

SEC	TWP	RGE	COUNTY
Spot Location	1/4	1/4	1/4
Depth of Deviation	Radius of Turn		Direction
Measured Total Depth	True Vertical Depth		BHL From Lease, Unit, or Property Line:

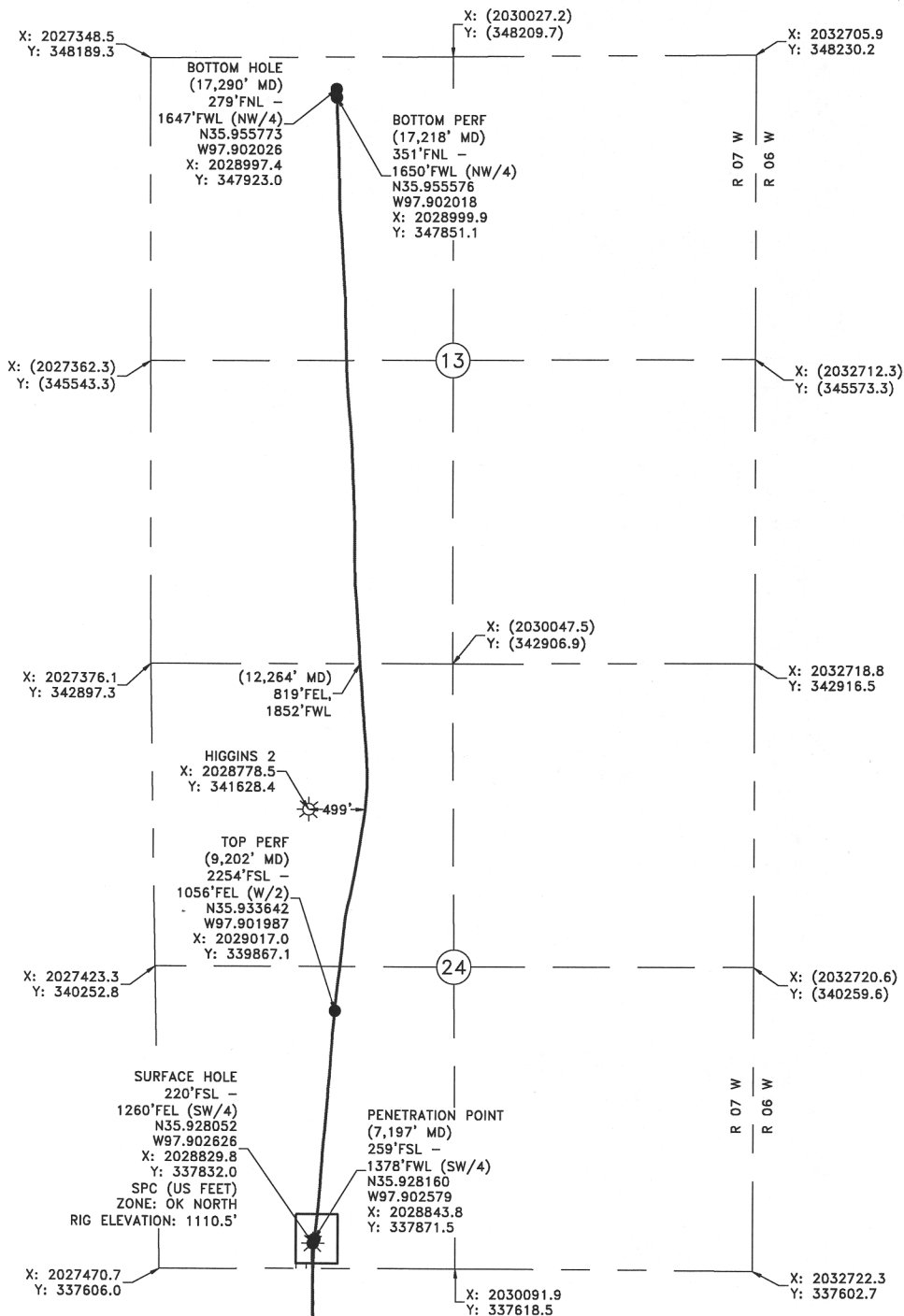
LATERAL #3

SEC	TWP	RGE	COUNTY
Spot Location	1/4	1/4	1/4
Depth of Deviation	Radius of Turn		Direction
Measured Total Depth	True Vertical Depth		BHL From Lease, Unit, or Property Line:

Image 01002A

SECTIONS 13 AND 24, T 17 N - R 07 W, I.M.,
KINGFISHER COUNTY, OKLAHOMA

BEARINGS ARE GRID
OKLAHOMA SPC. NAD 27, NORTH ZONE



Operator: CHESAPEAKE OPERATING, L.L.C. Date Staked: 1/16/2018
Lease Name: SMITH 24-17-7 Well No.: 1HC Elevation: 1084'
Topography and Vegetation: CULTIVATED FIELD
Good Drill Site? YES Reference or Alt. Location Stakes Set: NONE
Best Accessibility to Location: FROM COUNTY ROAD
Distance and Direction from Hwy. Jct. or town: FROM DOVER, OK. HEAD SOUTH 2.7 MILES ON US HWY. 81 THEN EAST 0.4 MILE ON CO. RD. E0740, THEN SOUTH 1.0 MILE ON CO. RD. N2860, THEN EAST 0.3 MILE ON CO. RD. E0750, TURN NORTH INTO LOCATION.

FINAL AS-DRILLED PLAT

All as-drilled information that is shown is based upon information and instructions furnished by Chesapeake Operating, L.L.C.

Chesapeake Operating, L.L.C. Chesapeake

Gateway PO: BOX 980
WEEKER, OK 74855
OFF: (405) 273-0954
FAX: (405) 273-0580
C.A. NO. 4081 (US)
EXP. DATE 8-30-2020

EXHIBIT "A" AS-DRILLED
SMITH 24-17-7 1HC
220' FSL - 1363' FWL
SECTIONS 13 AND 24, T 17 N - R 07 W, I.M.,
KINGFISHER COUNTY, OKLAHOMA

LEGEND
SURFACE LOCATION
EXISTING WELL: BOTTOM HOLE/LANDING POINT
PROPOSED WELL PATH
EXISTING PIPELINE
ELECTRIC LINE
OVERHEAD POWER
FENCE

REV.	DESCRIPTION	DATE
1	JE REVISED FOOTAGE CALLS	2/28/19
2	JE REVISED FOOTAGE CALLS	3/4/19
3	JE REVISED FOOTAGE CALLS	3/5/19