

Oklahoma Corporation Commission
Oil & Gas Conservation Division
Post Office Box 52000
Oklahoma City, Oklahoma 73152-2000
Rule 165: 10-3-25

Form 1002A

API No.: 35073263800000

Completion Report

Spud Date: December 15, 2018

OTC Prod. Unit No.: 073-225145-0-0000

Drilling Finished Date: December 28, 2018

1st Prod Date: February 28, 2019

Completion Date: February 25, 2019

Drill Type: HORIZONTAL HOLE

Min Gas Allowable: Yes

Well Name: SMITH 9-16-6 1HC

Purchaser/Measurer: CHESAPEAKE OPERATING
OOC

First Sales Date: 03/08/2019

Location: KINGFISHER 9 16N 6W
NE NE NE NW
245 FNL 2370 FWL of 1/4 SEC
Latitude: 35.884914 Longitude: -97.843556
Derrick Elevation: 1103 Ground Elevation: 1076

Operator: CHESAPEAKE OPERATING LLC 17441
PO BOX 18496
6100 N WESTERN AVE
OKLAHOMA CITY, OK 73154-0496

Completion Type		Location Exception		Increased Density	
X	Single Zone	Order No		Order No	
	Multiple Zone	694055		N/A	
	Commingled	694429			

Casing and Cement							
Type	Size	Weight	Grade	Feet	PSI	SAX	Top of CMT
SURFACE	9 5/8	36	J-55	1473		595	SURFACE
PRODUCTION	7	26	P-110EC	7244		425	934

Liner								
Type	Size	Weight	Grade	Length	PSI	SAX	Top Depth	Bottom Depth
LINER	4 1/2	13.50	P-110EC	8470	0	780	6915	15385

Total Depth: 15389

Packer		Plug	
Depth	Brand & Type	Depth	Plug Type
There are no Packer records to display.		There are no Plug records to display.	

Initial Test Data

Test Date	Formation	Oil BBL/Day	Oil-Gravity (API)	Gas MCF/Day	Gas-Oil Ratio Cu FT/BBL	Water BBL/Day	Pumpin or Flowing	Initial Shut-In Pressure	Choke Size	Flow Tubing Pressure
Apr 13, 2019	OSWEGO	810	42.1	816	1007	1247	PUMPING			107

Completion and Test Data by Producing Formation

Formation Name: OSWEGO

Code: 404OSWG

Class: OIL

Spacing Orders

Order No	Unit Size
683414	640
691696	640
694054	MULTIUNIT

Perforated Intervals

From	To
7179	15274

Acid Volumes

510,450 GALLONS ACID

Fracture Treatments

81,132 BARRELS FLUIDS

Formation	Top
OSWEGO	7169

Were open hole logs run? No

Date last log run:

Were unusual drilling circumstances encountered? No

Explanation:

Other Remarks

EXCEPTION TO THE RULE ORDER NUMBER 694066

Lateral Holes

Sec: 16 TWP: 16N RGE: 6W County: KINGFISHER

NW SW NE SE

1934 FSL 1065 FEL of 1/4 SEC

Depth of Deviation: 5914 Radius of Turn: 838 Direction: 177 Total Length: 8220

Measured Total Depth: 15389 True Vertical Depth: 6752 End Pt. Location From Release, Unit or Property Line: 1065

FOR COMMISSION USE ONLY

Status: Accepted

1142818

API NO. 073-26380
OTC PROD.
UNIT NO. 073-225145

PLEASE TYPE OR USE BLACK INK ONLY
NOTE:
Attach copy of original 1002A if recompletion or reentry.

OKLAHOMA CORPORATION COMMISSION
Oil & Gas Conservation Division
Post Office Box 52000
Oklahoma City, Oklahoma 73152-2000
Rule 165:10-3-25

Form 1002A
Rev. 2009

☒ ORIGINAL
☐ AMENDED
Reason Amended

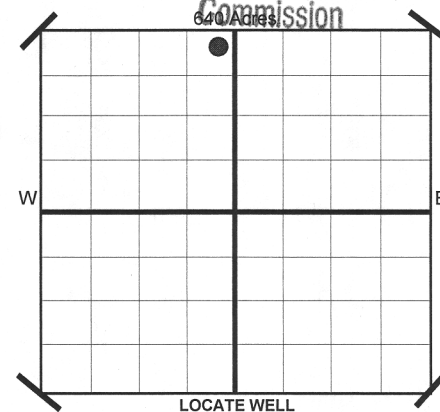
TYPE OF DRILLING OPERATION

☐ STRAIGHT HOLE ☐ DIRECTIONAL HOLE ☒ HORIZONTAL HOLE
If directional or horizontal, see reverse for bottom hole location.

COUNTY Kingfisher SEC 9 17N 16N RGE 6W
LEASE NAME Smith 9-16-6 WELL NO 1HC
SHL NE 1/4 NE 1/4 NE 1/4 NW 1/4 FNL 245 FWL OF 1/4 SEC 2,370
ELEVATION Derrick Fl 1,103 Ground 1,076 Latitude (if Known) 35.884914 Longitude (if Known) -97.843556
OPERATOR NAME CHESAPEAKE OPERATING, L.L.C. OTC/OCC OPERATOR NO. 17441
ADDRESS P.O. BOX 18496
CITY OKLAHOMA CITY STATE OK ZIP 73154

COMPLETION REPORT

SPUD DATE 12/15/2018
DRG FINISHED DATE 12/28/2018
DATE OF WELL COMPLETION 2/25/2019
1ST PROD DATE 2/28/2019
RECOMP DATE
Longitude (if Known) -97.843556



COMPLETION TYPE

☒ SINGLE ZONE
☐ MULTIPLE ZONE
Application Date
COMINGLED
Application Date F.D. F.D.
LOCATION EXCEPTION ORDER NO. 694055 / 694429
INCREASED DENSITY ORDER NO. N/A

CASING & CEMENT (Form 1002C must be attached)

TYPE	SIZE	WEIGHT	GRADE	FEET	PSI	SAX	TOP
CONDUCTOR							
SURFACE	9-5/8"	36#	J-55	1,473		595	Surface
INTERMEDIATE							
PRODUCTION	7"	26#	P-110EC	7,244		425	934
LINER	4-1/2"	13.50#	P-110EC	6,915-15,385		780	6,915
TOTAL DEPTH							15,389

PACKER @ BRAND & TYPE PLUG @ TYPE PLUG @ TYPE
PACKER @ BRAND & TYPE PLUG @ TYPE PLUG @ TYPE

COMPLETION & TEST DATA BY PRODUCING FORMATION

FORMATION	Oswego	Multiunit					Reported to Free Focus
SPACING & SPACING ORDER NUMBER	640 683414/691696	694054 F.D.					
CLASS: Oil, Gas, Dry, Inj. Disp, Comm Disp, Svc	Oil						
PERFORATED INTERVALS	7,179 - 15,274						
ACID/VOLUME	510,450 gals acid						
FRACTURE TREATMENT (Fluids/Prop Amounts)	81,132 bbls fluids						

Minimum Gas Allowable (165:10-17-7) Gas Purchaser/Measurer Chesapeake Operating, L.L.C.
☒ OR 1st Sales Date 3/8/2019
Oil Allowable (165:10-13-3)

INITIAL TEST DATA

INITIAL TEST DATE	4/13/2019					
OIL-BBL/DAY	810					
OIL-GRAVITY (API)	42.10					
GAS-MCF/DAY	816					
GAS-OIL RATIO CU FT/BBL	1,007					
WATER-BBL/DAY	1,247					
PUMPING OR FLOWING	Pumping					
INITIAL SHUT-IN PRESSURE						
CHOKE SIZE						
FLOW TUBING PRESSURE	107					

AS SUBMITTED

A record of the formations drilled through, and pertinent remarks are presented on the reverse. I declare that I have knowledge of the contents of this report and am authorized by my organization to make this report, which was prepared by me or under my supervision and direction, with the data and facts stated herein to be true, correct, and complete to the best of my knowledge and belief.

Juanita Cooper
SIGNATURE JUANITA COOPER - REGULATORY SPECIALIST 5/3/2019 405-848-8000
P.O. BOX 18496 OKLAHOMA CITY OK 73154 juanita.cooper@chk.com
ADDRESS CITY STATE ZIP EMAIL ADDRESS

PLEASE TYPE OR USE BLACK INK ONLY
FORMATION RECORD

Give formation names and tops, if available, or descriptions and thickness of formations drilled through. Show intervals cored or drillstem tested.

LEASE NAME Smith 9-16-6

WELL NO. 1HC

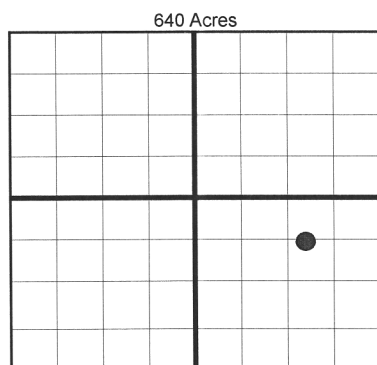
NAMES OF FORMATIONS	TOP
Oswego	7,169

FOR COMMISSION USE ONLY	
ITD on file <input type="checkbox"/> YES <input type="checkbox"/> NO	
APPROVED _____	DISAPPROVED _____
2) Reject Codes	

Were open hole logs run?	yes <input checked="" type="checkbox"/> no <input type="checkbox"/>
Date Last log was run	N/A
Was CO ₂ encountered?	yes <input checked="" type="checkbox"/> no <input type="checkbox"/> at what depths?
Was H ₂ S encountered?	yes <input checked="" type="checkbox"/> no <input type="checkbox"/> at what depths?
Were unusual drilling circumstances encountered?	yes <input type="checkbox"/> no <input checked="" type="checkbox"/>
If yes, briefly explain.	

Other remarks:

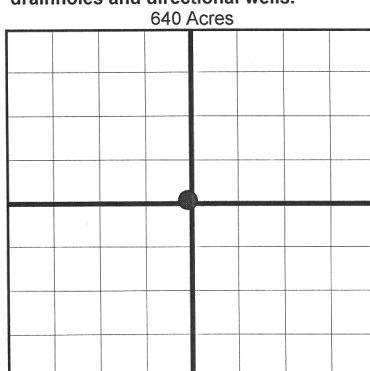
Exception to the Rule Order No. 694066



If more than three drainholes are proposed, attach a separate sheet indicating the necessary information.

Direction must be stated in degrees azimuth. Please note, the horizontal drainhole and its end point must be located within the boundaries of the lease or spacing unit.

Directional surveys are required for all drainholes and directional wells.



BOTTOM HOLE LOCATION FOR DIRECTIONAL HOLE

SEC	TWP	RGE	COUNTY
Spot Location			
1/4	1/4	1/4	1/4
Measured Total Depth		True Vertical Depth	BHL From Lease, Unit, or Property Line:

BOTTOM HOLE LOCATION FOR HORIZONTAL HOLE: (LATERALS)

SEC	TWP	RGE	COUNTY
16	16N	6W	Kingfisher
Spot Location			
NW 1/4	SW 1/4	NE 1/4	SE 1/4
Depth of Deviation		Radius of Turn	Direction
5,914		838	177
Measured Total Depth		True Vertical Depth	BHL From Lease, Unit, or Property Line:
15,389		6,752	1,065

LATERAL #2

SEC	TWP	RGE	COUNTY
Spot Location			
1/4	1/4	1/4	1/4
Depth of Deviation		Radius of Turn	Direction
Measured Total Depth		True Vertical Depth	BHL From Lease, Unit, or Property Line:
19,622			

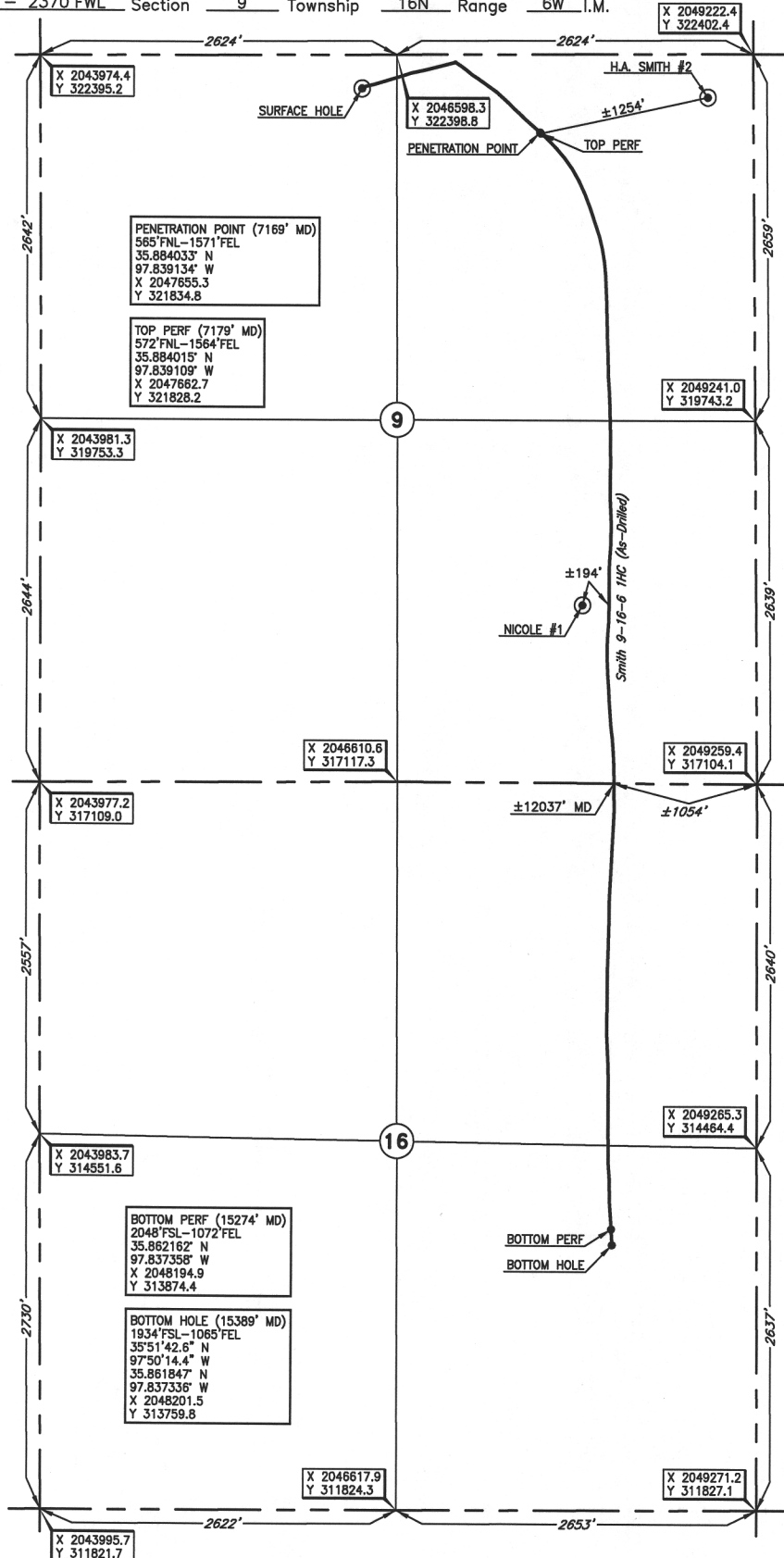
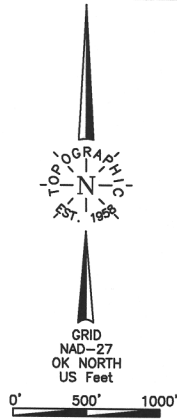
LATERAL #3

SEC	TWP	RGE	COUNTY
Spot Location			
1/4	1/4	1/4	1/4
Depth of Deviation		Radius of Turn	Direction
Measured Total Depth		True Vertical Depth	BHL From Lease, Unit, or Property Line:

KINGFISHER

County, Oklahoma

245'FNL - 2370'FWL Section 9 Township 16N Range 6W I.M.



Operator: CHESAPEAKE OPERATING, L.L.C.
 Lease Name: SMITH 9-16-6
 Topography & Vegetation Loc. fell on level pad
 Good Drill Site? Yes
 Reference Stakes or Alternate Location
 Stakes Set None
 Best Accessibility to Location From North off county road
 Distance & Direction From Jct. St. Hwy. 33 and US Hwy. 81 in Kingfisher, OK, go ±4.5 mi. East on
St. Hwy. 33, then ±2.0 mi. North to the NW Cor. of Sec. 9-16N-R6W

Well No.: 1HC

ELEVATION:
1076' Gr. at Level Pad

DATUM: NAD-27
 LAT: 35°53'05.7"N
 LONG: 97°50'36.8"W
 LAT: 35.884914° N
 LONG: 97.843556° W
 STATE PLANE
 COORDINATES: (US Feet)
 ZONE: OK NORTH
 X: 2046344.9
 Y: 322153.4

Date of Drawing: Mar. 06, 2019
 Project # 124677 Date Staked: Oct. 04, 2018 JP

FINAL AS-DRILLED PLAT

AS-DRILLED INFORMATION
 FURNISHED BY CHESAPEAKE OPERATING