

Oklahoma Corporation Commission
Oil & Gas Conservation Division
Post Office Box 52000
Oklahoma City, Oklahoma 73152-2000
Rule 165: 10-3-25

Form 1002A

API No.: 35045236980000

Completion Report

Spud Date: November 16, 2017

OTC Prod. Unit No.: 045-225344-0-0000

Drilling Finished Date: December 21, 2017

1st Prod Date: April 10, 2019

Completion Date: April 10, 2019

Drill Type: HORIZONTAL HOLE

Min Gas Allowable: Yes

Well Name: HURST-BOUGHAN 8 5H

Purchaser/Measurer: DCP MIDSTREAM

Location: ELLIS 17 18N 24W
NW NW NE NE
250 FNL 1210 FEL of 1/4 SEC
Derrick Elevation: 0 Ground Elevation: 2267

First Sales Date: 04/10/2019

Operator: EOG RESOURCES INC 16231

3817 NW EXPRESSWAY STE 500
OKLAHOMA CITY, OK 73112-1483

Completion Type		Location Exception		Increased Density	
X	Single Zone	Order No		Order No	
	Multiple Zone	685699		673795	
	Commingled				

Casing and Cement							
Type	Size	Weight	Grade	Feet	PSI	SAX	Top of CMT
SURFACE	9 5/8	36	J-55	1013		490	SURFACE
PRODUCTION	7	29	P-110	8407		570	1410

Liner								
Type	Size	Weight	Grade	Length	PSI	SAX	Top Depth	Bottom Depth
LINER	4.5	13.5	P-110	6623	0	865	8240	14863

Total Depth: 14912

Packer	
Depth	Brand & Type
There are no Packer records to display.	

Plug	
Depth	Plug Type
There are no Plug records to display.	

Initial Test Data										
Test Date	Formation	Oil BBL/Day	Oil-Gravity (API)	Gas MCF/Day	Gas-Oil Ratio Cu FT/BBL	Water BBL/Day	Pumpin or Flowing	Initial Shut-In Pressure	Choke Size	Flow Tubing Pressure
Apr 12, 2019	MARMATON	67	40	64	955	1500	FLOWING		64	251

Completion and Test Data by Producing Formation

Formation Name: MARMATON

Code: 404MRMN

Class: OIL

Spacing Orders

Order No	Unit Size
599494	640

Perforated Intervals

From	To
10602	14768

Acid Volumes

19,000 GALLONS 7.5% HCL TOTAL ACID

Fracture Treatments

4,440,156 GALLONS TOTAL FLUID, 4,807,000 POUNDS TOTAL PROPPANT
--

Formation	Top
MARMATON	9244

Were open hole logs run? Yes

Date last log run: December 08, 2017

Were unusual drilling circumstances encountered? No

Explanation:

Other Remarks

WELL NAME CHANGED FROM THAT ON APPROVED PERMIT TO DRILL TO INCLUDE "8" IN LEASE NAME RATHER THAN WELL NUMBER. DRILL VERTICAL PILOT HOLE FOR LOGGING FROM 8,467' TO 9,714'. SET AND CEMENTED WHIPSTOCK IN HOLE AT 8,593', 32 JOINTS OF 2 3/8" TUBING TAIL PIPE. PUMPED 25 BARRELS OF 10 PPG SPACER, 200 SACKS OF 15.6 PPG CEMENT AND DISPLACED WITH 5 BARRELS OF 10 PPG SPACER. PULLED OUT OF WHIPSTOCK AND CIRCULATED UP SPACER, TRIP OUT OF HOLE TO PICK UP CURVE BHA. OCC - THIS DOCUMENT IS ACCEPTED BASED ON THE DATA SUBMITTED THE FINAL LOCATION EXCEPTION HAS NOT BEEN ISSUED.

Lateral Holes

Sec: 17 TWP: 18N RGE: 24W County: ELLIS

SE NW NE NE

365 FNL 785 FEL of 1/4 SEC

Depth of Deviation: 0 Radius of Turn: 0 Direction: 287 Total Length: 0

Measured Total Depth: 9714 True Vertical Depth: 9680 End Pt. Location From Release, Unit or Property Line: 365

Sec: 8 TWP: 18N RGE: 24W County: ELLIS

NW NE NE NE

52 FNL 342 FEL of 1/4 SEC

Depth of Deviation: 8302 Radius of Turn: 1497 Direction: 4 Total Length: 5113

Measured Total Depth: 14912 True Vertical Depth: 9127 End Pt. Location From Release, Unit or Property Line: 52

FOR COMMISSION USE ONLY

1142782

Status: Accepted

EMAIL ADDRESS _____

AS SUBMITTED

PLEASE TYPE OR USE BLACK INK ONLY

FORMATION RECORD

Give formation names and tops, if available, or descriptions and thickness of formations drilled through. Show intervals cored or drillstem tested.

NAMES OF FORMATIONS	TOP
MARMATON MD	9,244

LEASE NAME

HURST-BOUGHAN 8

WELL NO.

5H

FOR COMMISSION USE ONLY

ITD on file

☐ YES☐ NO

APPROVED

DISAPPROVED

2) Reject Codes

Were open hole logs run?

☒ yes ☐ no

Date Last log was run

12/8/2017

Was CO₂ encountered?☐ yes ☒ no at what depths?Was H₂S encountered?☐ yes ☒ no at what depths?

Were unusual drilling circumstances encountered?

☐ yes ☒ no

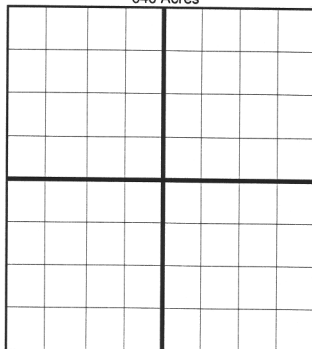
If yes, briefly explain below:

Other remarks:

NAME CHANGED FROM THAT ON APPROVED PERMIT TO DRILL TO INCLUDE "8" IN LEASE NAME RATHER THAN WELL NO.

Drill vertical pilot hole for logging from 8,467' to 9,714'. Set and cemented whipstock in hole at 8,593', 32 joints of 2 3/8" tubing tail pipe. Pumped 25 bbls of 10 ppg spacer, 200 sacks of 15.6 ppg cement and displaced with 5 bbls of 10 ppg spacer. Pulled out of whipstock and circulated up spacer, trip out of hole to pick up curve bha.

640 Acres

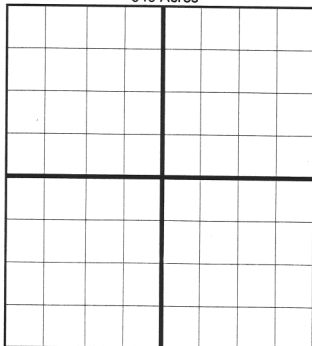


If more than three drainholes are proposed, attach a separate sheet indicating the necessary information.

Direction must be stated in degrees azimuth.
Please note, the horizontal drainhole and its end point must be located within the boundaries of the lease or spacing unit.

Directional surveys are required for all drainholes and directional wells.

640 Acres



BOTTOM HOLE LOCATION FOR DIRECTIONAL HOLE

SEC	TWP	RGE	COUNTY
Spot Location	1/4	1/4	1/4
Measured Total Depth	True Vertical Depth	BHL From Lease, Unit, or Property Line:	

BOTTOM HOLE LOCATION FOR HORIZONTAL HOLE: (LATERALS)

PILOT HOLE

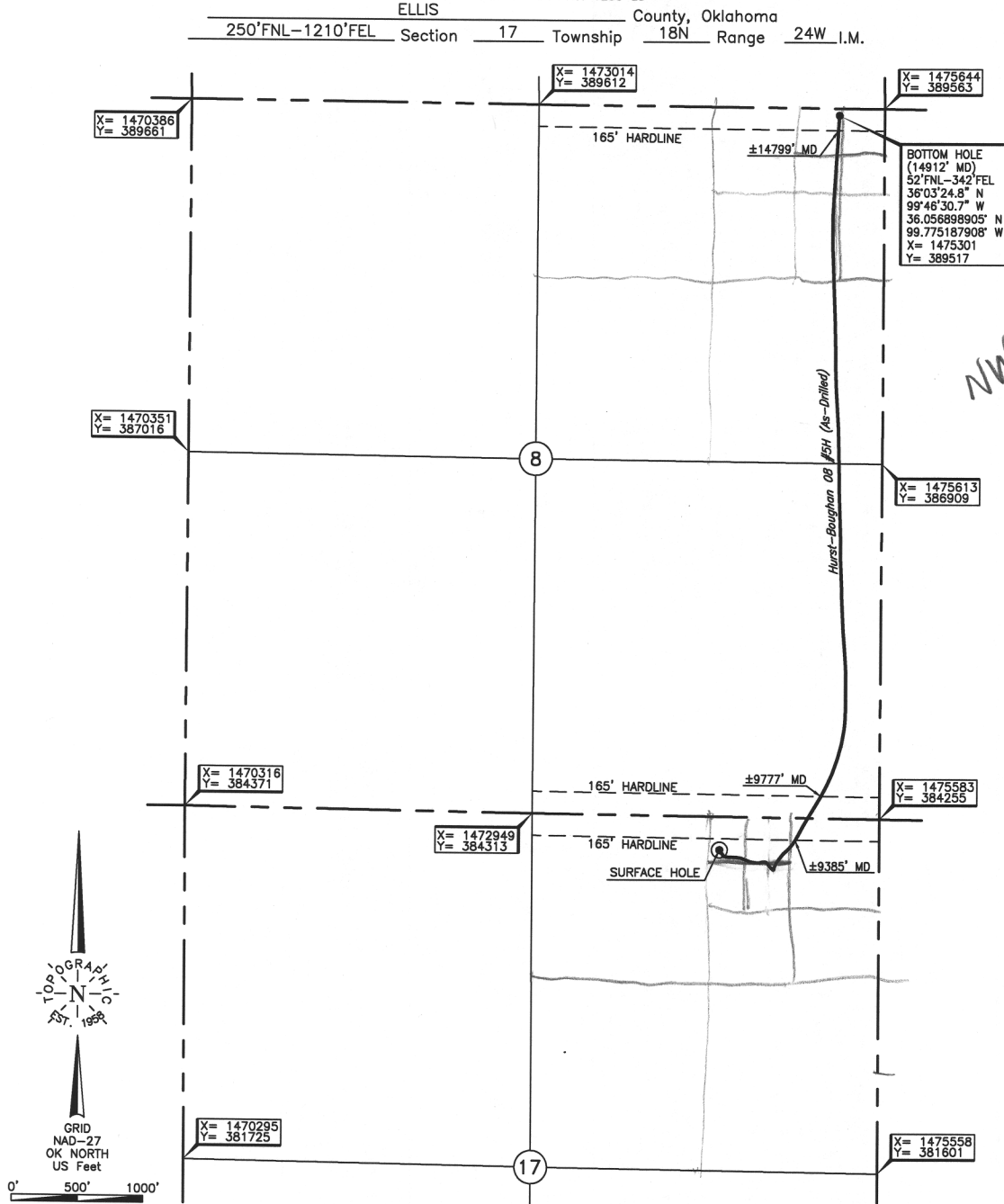
SEC	TWP	RGE	COUNTY
17	18N	24W	ELLIS
Spot Location	SE 1/4	NW 1/4	NE 1/4
Depth of Deviation	Radius of Turn	Direction	Total Length
Measured Total Depth	True Vertical Depth	BHL From Lease, Unit, or Property Line:	
9,714	9,680	287	365

SIDETRACK HOLE

SEC	TWP	RGE	COUNTY
8	18N	24W	ELLIS
Spot Location	NW 1/4	NE 1/4	NE 1/4
Depth of Deviation	Radius of Turn	Direction	Total Length
Measured Total Depth	True Vertical Depth	BHL From Lease, Unit, or Property Line:	
8,302	1,497	5 46	5,113
14,912	9,127	52	

LATERAL #3

SEC	TWP	RGE	COUNTY
Spot Location	1/4	1/4	1/4
Depth of Deviation	Radius of Turn	Direction	Total Length
Measured Total Depth	True Vertical Depth	BHL From Lease, Unit, or Property Line:	



BHL
NW NE NE NE

Pilot Hole
365' FNL
785' FEL

SE NW NE NE

Operator: EOG RESOURCES, INC.

Lease Name: HURST-BOUGHAN

Well No.: 08#5H

ELEVATION:

2267' Gr. at Stake

Topography & Vegetation Loc. fell in sandy brush pasture.

Good Drill Site? Yes

Reference Stakes or Alternate Location
Stakes Set None

Best Accessibility to Location From East off lease road.

Distance & Direction

from Hwy Jct or Town From the junction of US Hwy, 60 E-W and US Hwy, 283 S, go South

±6.5 miles, then West ±1 through section 16 to the NE Cor. of Sec 17-T18N-R24W.

This information was gathered with a GPS receiver with ±1 foot Horiz./Vert. accuracy.

DATUM: NAD-27
LAT: 36°02'30.4"N
LONG: 99°46'40.8"W
LAT: 36.041785143°N
LONG: 99.777992501°W
STATE PLANE
COORDINATES: (US Feet)
ZONE: OK NORTH
X: 1474371
Y: 384032

Invoice # 284368A

Date of Drawing: Jan. 04, 2018

Date Staked: Sept. 19, 2017

JP

FINAL AS-DRILLED PLAT

AS-DRILLED INFORMATION
FURNISHED BY EOG RESOURCES, INC.