

Oklahoma Corporation Commission  
Oil & Gas Conservation Division  
Post Office Box 52000  
Oklahoma City, Oklahoma 73152-2000  
Rule 165: 10-3-25

Form 1002A

API No.: 35137274570001

**Completion Report**

Spud Date: December 12, 2015

OTC Prod. Unit No.:

Drilling Finished Date: December 12, 2015

**Amended**

1st Prod Date: February 25, 2016

Amend Reason: SHOW ADDITIONAL PERFORATIONS

Completion Date: December 17, 2015

Recomplete Date: April 08, 2019

**Drill Type: STRAIGHT HOLE**

**SERVICE WELL**

Well Name: SCHOOL LAND SL-75

Purchaser/Measurer:

Location: STEPHENS 14 3S 5W  
SE NW SW NW  
1652 FNL 495 FWL of 1/4 SEC  
Latitude: 34.29917 Longitude: -97.70083333  
Derrick Elevation: 912 Ground Elevation: 906

First Sales Date:

Operator: BANNER OIL & GAS LLC 22792

907 S DETROIT AVE STE 1035  
TULSA, OK 74120-4317

Completion Type		Location Exception		Increased Density	
X	Single Zone	Order No		Order No	
	Multiple Zone	There are no Location Exception records to display.		There are no Increased Density records to display.	
	Commingled				

Casing and Cement							
Type	Size	Weight	Grade	Feet	PSI	SAX	Top of CMT
PRODUCTION	4 1/2			1130		150	SURFACE

Liner								
Type	Size	Weight	Grade	Length	PSI	SAX	Top Depth	Bottom Depth
There are no Liner records to display.								

**Total Depth: 1202**

Packer		Plug	
Depth	Brand & Type	Depth	Plug Type
725	TENSION	1134	CEMENT

Initial Test Data
-------------------

Test Date	Formation	Oil BBL/Day	Oil-Gravity (API)	Gas MCF/Day	Gas-Oil Ratio Cu FT/BBL	Water BBL/Day	Pumpin or Flowing	Initial Shut- In Pressure	Choke Size	Flow Tubing Pressure
-----------	-----------	----------------	----------------------	----------------	----------------------------	------------------	----------------------	---------------------------------	---------------	-------------------------

There are no Initial Data records to display.

Completion and Test Data by Producing Formation

Formation Name: LOCO

Code: 405LOCO

Class: INJ

Spacing Orders	
Order No	Unit Size
There are no Spacing Order records to display.	

Perforated Intervals	
From	To
738	1058

Acid Volumes	
There are no Acid Volume records to display.	

Fracture Treatments	
There are no Fracture Treatments records to display.	

Formation	Top
LOCO SAND	735

Were open hole logs run? No

Date last log run:

Were unusual drilling circumstances encountered? No

Explanation:

Other Remarks
PLACE WELL ON INJECTION PER PERMIT NUMBER 1908550022

FOR COMMISSION USE ONLY

1142795

Status: Accepted

API NO. 137-27457  
OTC PROD.  
UNIT NO.

(PLEASE TYPE OR USE BLACK INK ONLY)

OKLAHOMA CORPORATION COMMISSION  
Oil & Gas Conservation Division  
Post Office Box 52000  
Oklahoma City, Oklahoma 73152-2000

RECEIVED

MAY 03 2019

Form 1002A  
Rev. 2009

☐ ORIGINAL  
☒ AMENDED (Reason)

Convert well to injection / show Additional Perforations  
Rule 165:10-3-25  
COMPLETION REPORT

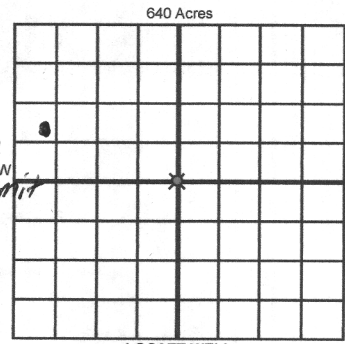
OKLAHOMA CORPORATION COMMISSION

TYPE OF DRILLING OPERATION  
☒ STRAIGHT HOLE ☐ DIRECTIONAL HOLE ☐ HORIZONTAL HOLE  
☒ SERVICE WELL

If directional or horizontal, see reverse for bottom hole location.

COUNTY STEPHENS SEC 14 TWP 3S RGE 5W  
LEASE NAME SCHOOL LAND (SL) FNL  
SE 1/4 NW 1/4 SW 1/4 NW 1/4 1/4 SEC 1652 FWL OF 495  
ELEVATION Derrick FL 912 Ground 906 Latitude (if known) 34.29917 Longitude (if known) -97.008333  
OPERATOR NAME BANNER OIL & GAS LLC OTC / OCC OPERATOR NO. 22792  
ADDRESS 907 S. DETROIT AVENUE, SUITE 1035  
CITY TULSA STATE OK ZIP 74120

SPUD DATE 12/12/2015  
DRLG FINISHED DATE 12/12/2015  
DATE OF WELL COMPLETION 12/17/2015  
1st PROD DATE 2/15/2016  
RECOMP DATE 4-8-2019  
pate use w Per mit



COMPLETION TYPE  
☒ SINGLE ZONE  
☐ MULTIPLE ZONE  
Application Date  
COMINGLED  
Application Date  
LOCATION EXCEPTION ORDER NO.  
INCREASED DENSITY ORDER NO.

CASING & CEMENT (Attach Form 1002C)							
TYPE	SIZE	WEIGHT	GRADE	FEET	PSI	SAX	TOP OF CMT
CONDUCTOR							
SURFACE							
INTERMEDIATE							
PRODUCTION	4 1/2			1130		150	SURFACE
LINER							

PACKER @ 725 BRAND & TYPE TENSION PLUG @ 1134 TYPE Cement PLUG @ TYPE  
PACKER @ BRAND & TYPE PLUG @ TYPE PLUG @ TYPE

TOTAL DEPTH 1200 1202

COMPLETION & TEST DATA BY PRODUCING FORMATION

FORMATION	LOCO SAND						
SPACING & SPACING ORDER NUMBER							
CLASS: Oil, Gas, Dry, Inj, Disp, Comm Disp, Svc	INJ						
PERFORATED INTERVALS	738 - 1058						
ACID/VOLUME							
FRACTURE TREATMENT (Fluids/Prop Amounts)							

Min Gas Allowable (165:10-17-7)

Gas Purchaser/Measurer

☐ OR  
Oil Allowable (165:10-13-3)

First Sales Date

INITIAL TEST DATA

INITIAL TEST DATE							
OIL-BBL/DAY							
OIL-GRAVITY ( API)							
GAS-MCF/DAY							
GAS-OIL RATIO CU FT/BBL							
WATER-BBL/DAY							
PUMPING OR FLOWING							
INITIAL SHUT-IN PRESSURE							
CHOKE SIZE							
FLOW TUBING PRESSURE							

AS SUBMITTED

A record of the formations drilled through, and pertinent remarks are presented on the reverse. I declare that I have knowledge of the contents of this report and am authorized by my organization to make this report, which was prepared by me or under my supervision and direction, with the data and facts stated herein to be true, correct, and complete to the best of my knowledge and belief.

NATHANIA NAFTALY  
SIGNATURE NAME (PRINT OR TYPE) 4/30/19 281-657-4678  
907 S. DETROIT AVENUE, SUITE 1035, TULSA OK 74120 NOAUD@HOTMAIL.COM  
ADDRESS CITY STATE ZIP EMAIL ADDRESS

PLEASE TYPE OR USE BLACK INK ONLY  
FORMATION RECORD

Give formation names and tops, if available, or descriptions and thickness of formations drilled through. Show intervals cored or drillstem tested.

NAMES OF FORMATIONS	TOP
Loco Sand	735

LEASE NAME SCHOOL LAND SL

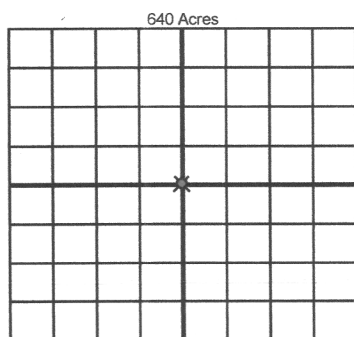
WELL NO. 75

FOR COMMISSION USE ONLY	
ITD on file <input type="checkbox"/> YES <input type="checkbox"/> NO	
APPROVED _____	DISAPPROVED _____
2) Reject Codes	
_____	
_____	
_____	
_____	

Were open hole logs run?	_____ yes _____ no
Date Last log was run	_____
Was CO <sub>2</sub> encountered?	_____ yes _____ no at what depths? _____
Was H <sub>2</sub> S encountered?	_____ yes _____ no at what depths? _____
Were unusual drilling circumstances encountered?	_____ yes _____ no
If yes, briefly explain below	

Other remarks:

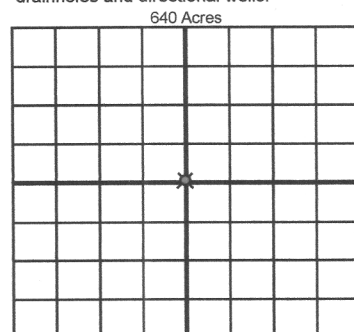
PLACE WELL ON INJECTION PER PERMIT# 1908550022



If more than three drainholes are proposed, attach a separate sheet indicating the necessary information.

Direction must be stated in degrees azimuth.  
Please note, the horizontal drainhole and its end point must be located within the boundaries of the lease or spacing unit.

Directional surveys are required for all drainholes and directional wells.



BOTTOM HOLE LOCATION FOR DIRECTIONAL HOLE

SEC	TWP	RGE	COUNTY		
Spot Location		Feet From 1/4 Sec Lines		FSL	FWL
1/4	1/4	1/4	1/4		
Measured Total Depth		True Vertical Depth		BHL From Lease, Unit, or Property Line:	

BOTTOM HOLE LOCATION FOR HORIZONTAL HOLE: (LATERALS)

LATERAL #1					
SEC	TWP	RGE	COUNTY		
Spot Location		Feet From 1/4 Sec Lines		FSL	FWL
1/4	1/4	1/4	1/4		
Depth of Deviation		Radius of Turn		Total Length	
Measured Total Depth		True Vertical Depth		BHL From Lease, Unit, or Property Line:	

LATERAL #2					
SEC	TWP	RGE	COUNTY		
Spot Location		Feet From 1/4 Sec Lines		FSL	FWL
1/4	1/4	1/4	1/4		
Depth of Deviation		Radius of Turn		Total Length	
Measured Total Depth		True Vertical Depth		BHL From Lease, Unit, or Property Line:	

LATERAL #3					
SEC	TWP	RGE	COUNTY		
Spot Location		Feet From 1/4 Sec Lines		FSL	FWL
1/4	1/4	1/4	1/4		
Depth of Deviation		Radius of Turn		Total Length	
Measured Total Depth		True Vertical Depth		BHL From Lease, Unit, or Property Line:	