

Oklahoma Corporation Commission  
Oil & Gas Conservation Division  
Post Office Box 52000  
Oklahoma City, Oklahoma 73152-2000  
Rule 165: 10-3-25

Form 1002A

API No.: 35051243500000

**Completion Report**

Spud Date: May 23, 2018

OTC Prod. Unit No.:

Drilling Finished Date: June 13, 2018

1st Prod Date:

Completion Date: June 13, 2018

**Drill Type: HORIZONTAL HOLE**

Well Name: NORGE-MARCHAND UNIT 21-16-1H

Purchaser/Measurer:

Location: GRADY 21 7N 8W  
NE NW SW SE  
1030 FSL 2180 FEL of 1/4 SEC  
Latitude: 35.061024 Longitude: -98.04731  
Derrick Elevation: 1200 Ground Elevation: 1185

First Sales Date:

Operator: LIME ROCK RESOURCES III-A LP 23577

1111 BAGBY ST STE 4600  
HOUSTON, TX 77002-2559

Completion Type		Location Exception		Increased Density	
	Single Zone	Order No		Order No	
	Multiple Zone	There are no Location Exception records to display.		There are no Increased Density records to display.	
	Commingled				

Casing and Cement							
Type	Size	Weight	Grade	Feet	PSI	SAX	Top of CMT
SURFACE	9 5/8	36	J55	1010		275	SURFACE
PRODUCTION	7	29	P110	9900		465	3200

Liner								
Type	Size	Weight	Grade	Length	PSI	SAX	Top Depth	Bottom Depth
There are no Liner records to display.								

**Total Depth: 13420**

Packer		Plug	
Depth	Brand & Type	Depth	Plug Type
There are no Packer records to display.		9782	CEMENT AND RETAINER

Initial Test Data										
Test Date	Formation	Oil BBL/Day	Oil-Gravity (API)	Gas MCF/Day	Gas-Oil Ratio Cu FT/BBL	Water BBL/Day	Pumpin or Flowing	Initial Shut-In Pressure	Choke Size	Flow Tubing Pressure
There are no Initial Data records to display.										

Completion and Test Data by Producing Formation			
Formation Name: MARCHAND		Code: 405MRCD	Class: TA
<b>Spacing Orders</b>		<b>Perforated Intervals</b>	
<b>Order No</b>	<b>Unit Size</b>	<b>From</b>	<b>To</b>
100904	UNIT	There are no Perf. Intervals records to display.	
<b>Acid Volumes</b>		<b>Fracture Treatments</b>	
There are no Acid Volume records to display.		There are no Fracture Treatments records to display.	

Formation	Top
MARCHAND	10444

Were open hole logs run? No  
Date last log run:  
  
Were unusual drilling circumstances encountered? Yes  
Explanation: DRLD WELL TO 13420', HOLE COLLAPSED,  
SET RETAINER @ 9795' (TOC 9782). OA CMT PLUG  
9782-10295'

Other Remarks
There are no Other Remarks.

Lateral Holes
Sec: 21 TWP: 7N RGE: 8W County: GRADY  SE SW NW NE  1109 FNL 2184 FEL of 1/4 SEC  Depth of Deviation: 9947 Radius of Turn: 603 Direction: 359 Total Length: 2525  Measured Total Depth: 13420 True Vertical Depth: 3147 End Pt. Location From Release, Unit or Property Line: 1109

FOR COMMISSION USE ONLY	
Status: Accepted	1143956

# As-Drilled Plat

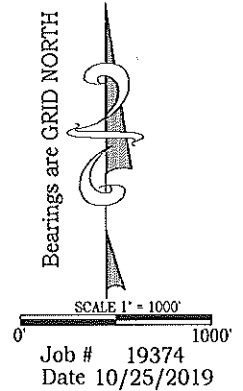
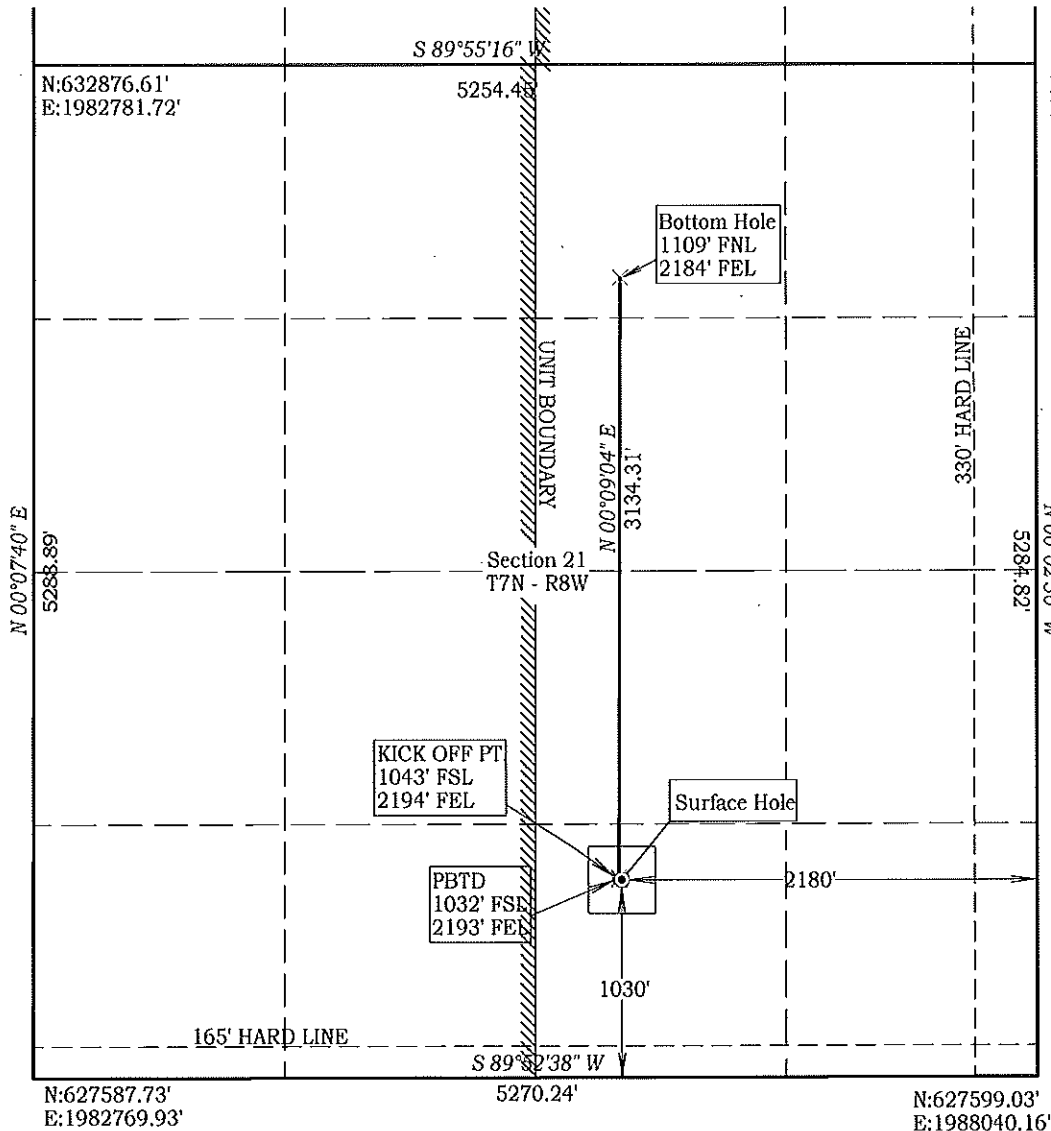
05124350

M & M Land Surveying, Inc.

520 "E" Street NW. Ardmore, OK. 73401  
Office 580-226-0446 Mobile 580-221-4999

Company Name: Lime Rock Resources III-A, LP Lease Name: Norge-Marchand Unit 21-16-1H  
Section 21 Township 7 North Range 8 West County Grady Oklahoma  
Surface Location 1030' FSL - 2180' FEL Elevation 1185'

ALL SECTION CORNER COORDINATES ARE NAD 27



NAD 27 OK SOUTH  
Surface Location  
Latitude: 35.060704°  
Longitude: 98.047249°  
Y= 628,624'  
X = 1,985,860'  
PBTD  
Y= 628,627'  
X = 1,985,847'  
KICK OFF PT.  
Y= 628,637'  
X = 1,985,845'  
Bottom Hole  
Y= 631,771'  
X = 1,985,853'

NAD 83 OK SOUTH  
Surface Location  
Latitude: 35.060768°  
Longitude: 98.047573°  
Y= 628,666'  
X = 1,954,263'  
PBTD  
Y= 628,668'  
X = 1,954,250'  
KICK OFF PT.  
Y= 628,678'  
X = 1,954,248'  
Bottom Hole  
Y= 631,813'  
X = 1,954,257'

*D. Harry McClintick* 10/25/19

D. Harry McClintick, R.P.L.S. # 1367, CA # 3093

This location has been staked according to the best official survey records available to us, but its accuracy is not guaranteed. Please review this plat and notify us immediately of any discrepancy.

