

Oklahoma Corporation Commission  
Oil & Gas Conservation Division  
Post Office Box 52000  
Oklahoma City, Oklahoma 73152-2000  
Rule 165: 10-3-25

Form 1002A

API No.: 35087221290001

**Completion Report**

Spud Date: April 29, 2018

OTC Prod. Unit No.: 087-223885-0-0000

Drilling Finished Date: May 19, 2018

1st Prod Date: July 10, 2018

Completion Date: July 10, 2018

**Drill Type:** HORIZONTAL HOLE

Min Gas Allowable: Yes

Well Name: LAUBHAN 0409 1H

Purchaser/Measurer: ENABLE GATHERING &  
PROCESSING

First Sales Date: 07/10/2018

Location: MCCLAIN 4 8N 4W  
NE NE NW NE  
282 FNL 1480 FEL of 1/4 SEC  
Latitude: 35.202988209 Longitude: -97.622331907  
Derrick Elevation: 0 Ground Elevation: 1223

Operator: EOG RESOURCES INC 16231

3817 NW EXPRESSWAY STE 500  
OKLAHOMA CITY, OK 73112-1483

Completion Type		Location Exception		Increased Density	
X	Single Zone	Order No		Order No	
	Multiple Zone	688489		N/A	
	Commingled				

Casing and Cement							
Type	Size	Weight	Grade	Feet	PSI	SAX	Top of CMT
SURFACE	9 5/8	36	J-55	1509		760	SURFACE
PRODUCTION	7 X 5.5	20 / 32	P-110	10832		2760	9043

Liner								
Type	Size	Weight	Grade	Length	PSI	SAX	Top Depth	Bottom Depth
There are no Liner records to display.								

**Total Depth: 19858**

Packer		Plug	
Depth	Brand & Type	Depth	Plug Type
There are no Packer records to display.		There are no Plug records to display.	

Initial Test Data
-------------------

Test Date	Formation	Oil BBL/Day	Oil-Gravity (API)	Gas MCF/Day	Gas-Oil Ratio Cu FT/BBL	Water BBL/Day	Pumpin or Flowing	Initial Shut-In Pressure	Choke Size	Flow Tubing Pressure
Jul 11, 2018	WOODFORD	532	40	138	259	4796	FLOWING	1100	128	2507

#### Completion and Test Data by Producing Formation

Formation Name: WOODFORD

Code: 319WDFD

Class: OIL

#### Spacing Orders

Order No	Unit Size
684298	640
684433	320
687433	MULTIUNIT

#### Perforated Intervals

From	To
9731	19766

#### Acid Volumes

20,250 7.5% HCL TOTAL ACID
----------------------------

#### Fracture Treatments

15,669,967 TOTAL FLUID, 21,057,965 TOTAL PROPPANT
---

Formation	Top
WOODFORD	9405

Were open hole logs run? No

Date last log run:

Were unusual drilling circumstances encountered? No

Explanation:

#### Other Remarks

OCC - PER OPERATOR CORRECT WELL NAME. OCC- THE SPACED UNIT IN SECTION 9 IS THE E/2 SECTION 9 A STANDUP 320 ACRE UNIT SEE SPACING ORDER 684433. OCC - THIS DOCUMENT IS ACCEPTED BASED ON THE DATA SUBMITTED THE NEITHER THE FINAL LOCATION EXCEPTION NOR THE FINAL MULTIUNIT ORDERS HAVE BEEN ISSUED.

#### Lateral Holes

Sec: 9 TWP: 8N RGE: 4W County: MCCLAIN

SW SE SE SE

175 FSL 377 FEL of 1/4 SEC

Depth of Deviation: 8960 Radius of Turn: 733 Direction: 178 Total Length: 10165

Measured Total Depth: 19858 True Vertical Depth: 9451 End Pt. Location From Release, Unit or Property Line: 175

#### FOR COMMISSION USE ONLY

1140458

Status: Accepted

API NO. 087-22129  
OTC PROD. UNIT NO. 087-223885

PLEASE TYPE OR USE BLACK INK ONLY  
NOTE:

Attach copy of original 1002A  
if recompletion or reentry.

OKLAHOMA CORPORATION COMMISSION  
Oil & Gas Conservation Division  
Post Office Box 52000  
Oklahoma City, Oklahoma 73152-2000  
Rule 165:10-3-25

RECEIVED

JUL 26 2018

OKLAHOMA CORPORATION  
COMMISSION

Form 1002A  
Rev. 2009

☒ ORIGINAL  
☐ AMENDED (Reason)

TYPE OF DRILLING OPERATION

☐ STRAIGHT HOLE ☐ DIRECTIONAL HOLE ☒ HORIZONTAL HOLE  
☐ SERVICE WELL

If directional or horizontal, see reverse for bottom hole location.

COUNTY	MCCLAIN	SEC	4	TWP	8N	RGE	4W	SPUD DATE	4/29/18
LEASE NAME	LAUBHAN 0409	WELL NO.	1H	DRLG FINISHED DATE	5/19/2018	DATE OF WELL COMPLETION	7/10/2018	1st PROD DATE	7/10/2018
NE 1/4 NE 1/4 NW 1/4 NE 1/4	FNL OF 1/4 SEC 282	FEL OF 1/4 SEC 1480	RECOMP DATE						
ELEVATION N Derrick FL	Ground 1223	Latitude (if known)		Longitude (if known)					
OPERATOR NAME	EOG Resources, Inc.	OTC/OCC OPERATOR NO.	16231						
ADDRESS	3817 NW Expressway, Suite 500								
CITY	Oklahoma City	STATE	OK	ZIP	73112				

640 Acres


LOCATE WELL

COMPLETION TYPE

<input checked="" type="checkbox"/> SINGLE ZONE
<input type="checkbox"/> MULTIPLE ZONE
Application Date
COMINGLED
Application Date
LOCATION EXCEPTION ORDER
INCREASED DENSITY ORDER NO.

CASING & CEMENT (Form 1002C must be attached)

TYPE	SIZE	WEIGHT	GRADE	FEET	PSI	SAX	TOP OF CMT
CONDUCTOR							
SURFACE	9 5/8	36	J-55	1,509		760	SURFACE
INTERMEDIATE							
PRODUCTION TAPERED STRING	7 x 5.5	20/32	P-110	19,832		2,760	9,043
LINER							
				TOTAL DEPTH		19,858	

PACKER @ BRAND & TYPE PLUG @ TYPE PLUG @ TYPE  
PACKER @ BRAND & TYPE PLUG @ TYPE PLUG @ TYPE

COMPLETION & TEST DATA BY PRODUCING FORMATION

FORMATION	WOODFORD						
SPACING & SPACING ORDER NUMBER	-640/670000, 670000	684298 (640)	684433 (320)	687433 (Muh)	IO	Monitor	Report to Area For us
CLASS: Oil, Gas, Dry, Inj, Disp, Comm Disp, Svc	OIL						
	9,731 - 19,766						
PERFORATED INTERVALS							
ACID/VOLUME	Total Acid - 20,250 7.5% HCL						
FRACTURE TREATMENT (Fluids/Prop Amounts)	Total Fluid - 15,669,967						
	Total Prop - 21,057,965						

Min Gas Allowable (165:10-17-7)

☒

OR

Oil Allowable (165:10-13-3)

Gas Purchaser/Measurer  
First Sales Date

Enable Gathering & Processing  
7/10/2018

INITIAL TEST DATA

INITIAL TEST DATE	7/11/2018						
OIL-BBL/DAY	532						
OIL-GRAVITY ( API)	40						
GAS-MCF/DAY	138						
GAS-OIL RATIO CU FT/BBL	259						
WATER-BBL/DAY	4796						
PUMPING OR FLOWING	FLOWING						
INITIAL SHUT-IN PRESSURE	1100						
CHOKE SIZE	128						
FLOW TUBING PRESSURE	2507						

AS SUBMITTED

A record of the formations drilled through, and pertinent remarks are presented on the reverse. I declare that I have knowledge of the contents of this report and am authorized by my organization to make this report, which was prepared by me or under my supervision and direction, with the data and facts stated herein to be true, correct, and complete to the best of my knowledge and belief.

SIGNATURE	Joni Reeder	NAME (PRINT OR TYPE)	Joni Reeder	DATE	7/26/18	PHONE NUMBER	405-246-3100
ADDRESS	3817 NW Expressway, Suite 500	CITY	Oklahoma City	STATE	OK	ZIP	73112
				EMAIL ADDRESS			

## PLEASE TYPE OR USE BLACK INK ONLY

## FORMATION RECORD

Give formation names and tops, if available, or descriptions and thickness of formations drilled through. Show intervals cored or drillstem tested.

NAMES OF FORMATIONS	TOP
WOODFORD MD	9,405

LEASE NAME \_\_\_\_\_

WELL NO. \_\_\_\_\_

## FOR COMMISSION USE ONLY

ITD on file ☐ YES ☐ NO

APPROVED \_\_\_\_\_ DISAPPROVED \_\_\_\_\_

2) Reject Codes

Were open hole logs run? \_\_\_\_\_ yes ☒ no

Date Last log was run

N/A

Was CO<sub>2</sub> encountered? \_\_\_\_\_ yes ☒ no

at what depths? \_\_\_\_\_

Was H<sub>2</sub>S encountered? \_\_\_\_\_ yes ☒ no

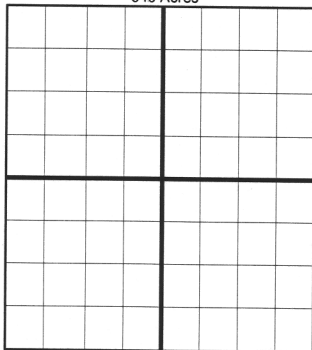
at what depths? \_\_\_\_\_

Were unusual drilling circumstances encountered? \_\_\_\_\_ yes ☒ no

If yes, briefly explain below:

Other remarks:

640 Acres

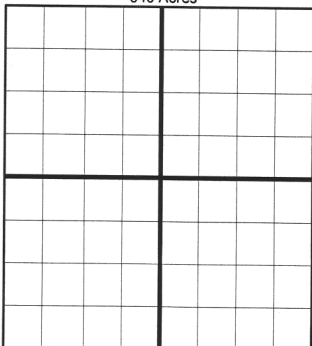


If more than three drainholes are proposed, attach a separate sheet indicating the necessary information.

Direction must be stated in degrees azimuth.  
Please note, the horizontal drainhole and its end point must be located within the boundaries of the lease or spacing unit.

Directional surveys are required for all drainholes and directional wells.

640 Acres



## BOTTOM HOLE LOCATION FOR DIRECTIONAL HOLE

SEC	TWP	RGE	COUNTY
Spot Location	1/4	1/4	1/4
Measured Total Depth	True Vertical Depth	Feet From 1/4 Sec Lines	FSL FWL
BHL From Lease, Unit, or Property Line:			

## BOTTOM HOLE LOCATION FOR HORIZONTAL HOLE: (LATERALS)

## LATERAL #1

SEC	TWP	RGE	COUNTY
9	8N	4W	MCCLAIN
Spot Location	SW 1/4 SE 1/4 SE 1/4 SE 1/4	Feet From 1/4 Sec Lines	FSL 1765 FEL 377
Depth of Deviation	8,960	Radius of Turn	733
Measured Total Depth	19,858	True Vertical Depth	9,451
		Direction	178
		Total Length	10,165
			175

Per Exhibit LE

## LATERAL #2

SEC	TWP	RGE	COUNTY
Spot Location	1/4	1/4	1/4
Depth of Deviation	Radius of Turn	Direction	Total Length
Measured Total Depth	True Vertical Depth	BHL From Lease, Unit, or Property Line:	

## LATERAL #3

SEC	TWP	RGE	COUNTY
Spot Location	1/4	1/4	1/4
Depth of Deviation	Radius of Turn	Direction	Total Length
Measured Total Depth	True Vertical Depth	BHL From Lease, Unit, or Property Line:	

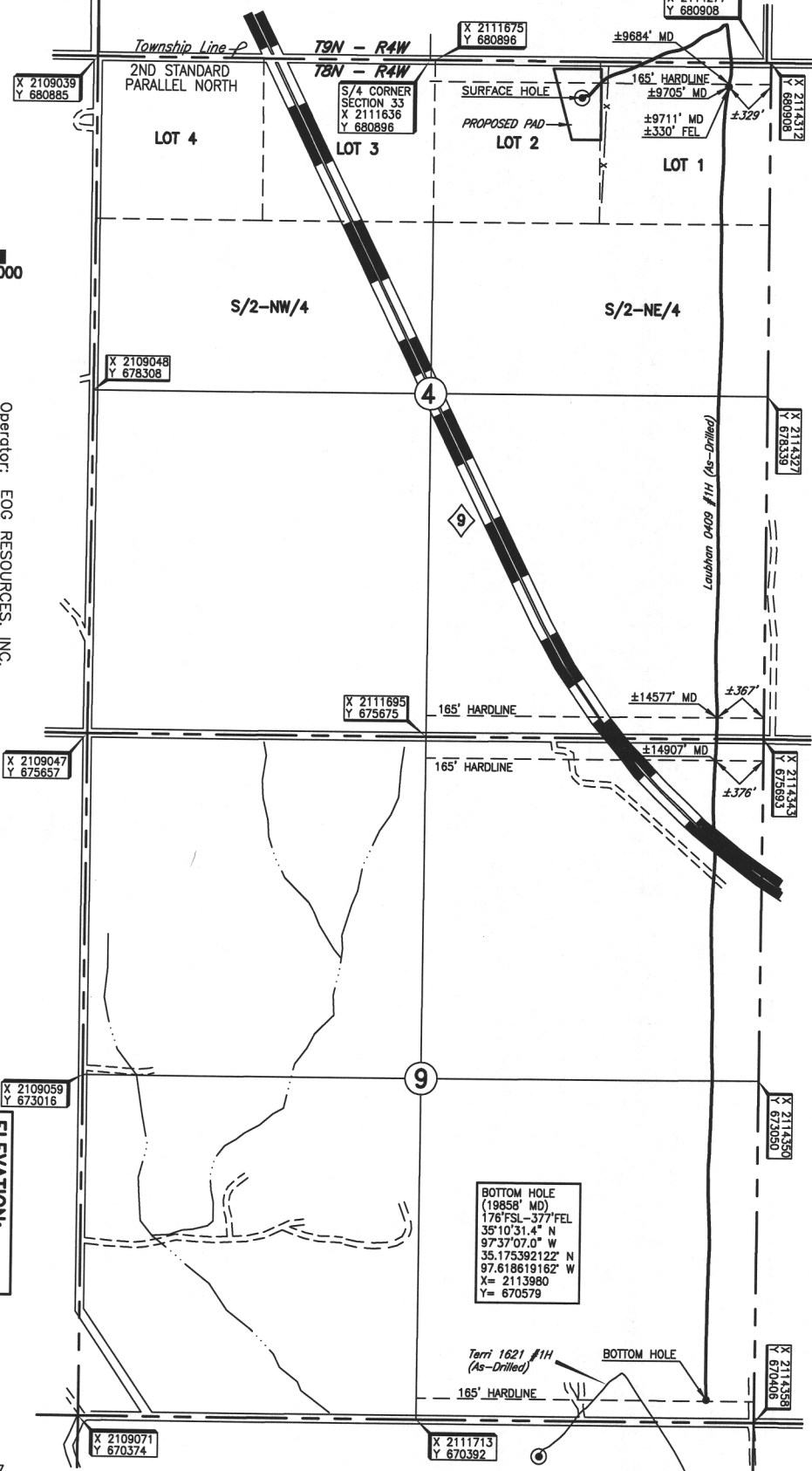
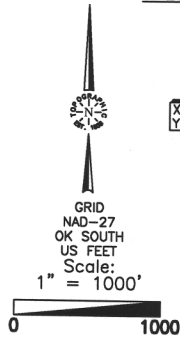
13800 WIRELESS WAY, OKLA. CITY, OKLA. 73134 \* LOCAL (405) 843-4847 \* OUT OF STATE (800) 654-3219  
Certificate of Authorization No. 1293 LS

**REVISION "A"**  
**05-23-2018**

County, Oklahoma

282'FNL - 1480'FEL Section 4 Township 8N Range 4W I.M.

SE CORNER  
SECTION 33  
X 2114277  
Y 680908



Operator: EOG RESOURCES, INC. ☒ **ELEVATION:** 1228' Gr. at Stake ☒  
 Lease Name: LAUBHAN 0409 Well No.: #1H  
 Topography & Vegetation Location fell on pad under construction. Existing Fc.  $\pm$  195' East.  
 Good Drill Site? Yes Alternate Stake Set None  
 Best Accessibility to Location From North off county road.  
 Distance & Direction From Blanchard, Ok., go  $\pm$  0.5 mile North on St. Hwy. 76, then  $\pm$  0.25 mile East, then  $\pm$  4 miles North on St. Hwy. 76, then  $\pm$  2 miles East to the NE corner of Section 4, T8N - R4W.

(This information was gathered with a GPS receiver with  $\pm 1$  foot Horiz./Vert. accuracy.)

DATUM: NAD-27  
LAT: 35°12'10.8"N  
LONG: 97°37'20.4"W  
LAT: 35.202988209°N  
LONG: 97.622331907°W  
STATE PLANE  
COORDINATES (US FEET):  
ZONE: OK SOUTH  
X: 2112833  
Y: 680619

Invoice # 294308 Date of Drawing: May 21, 2018  
292014 Date Staked: April 12, 2018 JP

## FINAL AS-DRILLED PLAT

AS-DRILLED INFORMATION  
FURNISHED BY EOG RESOURCES, INC.