

Oklahoma Corporation Commission
Oil & Gas Conservation Division
Post Office Box 52000
Oklahoma City, Oklahoma 73152-2000
Rule 165: 10-3-25

Form 1002A

API No.: 35071243110003

Completion Report

Spud Date: June 01, 2009

OTC Prod. Unit No.: 071-202022-0-0000

Drilling Finished Date: June 05, 2009

Amended

Amend Reason: SET PLUG AT 3,444' / ADD PERFORATIONS TO CLEVELAND AND FRACTURE TREAT

1st Prod Date: August 04, 2009

Completion Date: June 22, 2009

Recomplete Date: October 04, 2021

Drill Type: STRAIGHT HOLE

Well Name: VICKERY 1-34

Purchaser/Measurer:

Location: KAY 34 29N 1W
NE SW NW NW
1865 FSL 610 FWL of 1/4 SEC
Derrick Elevation: 1106 Ground Elevation: 1093

First Sales Date:

Operator: BARBER OIL LLC 24363

8801 S YALE AVE STE 150
TULSA, OK 74137-3575

Completion Type		Location Exception		Increased Density	
X	Single Zone	Order No		Order No	
	Multiple Zone	There are no Location Exception records to display.		There are no Increased Density records to display.	
	Commingled				

Casing and Cement							
Type	Size	Weight	Grade	Feet	PSI	SAX	Top of CMT
SURFACE	8 5/8	24		252		175	SURFACE
PRODUCTION	5 1/2	15.5		3520		2280	280

Liner								
Type	Size	Weight	Grade	Length	PSI	SAX	Top Depth	Bottom Depth
There are no Liner records to display.								

Total Depth: 3524

Packer		Plug	
Depth	Brand & Type	Depth	Plug Type
There are no Packer records to display.		3444	CIBP

Initial Test Data										
Test Date	Formation	Oil BBL/Day	Oil-Gravity (API)	Gas MCF/Day	Gas-Oil Ratio Cu FT/BBL	Water BBL/Day	Pumpin or Flowing	Initial Shut-In Pressure	Choke Size	Flow Tubing Pressure
Oct 07, 2021	CLEVELAND	2.08	39			146	PUMPING			

Completion and Test Data by Producing Formation

Formation Name: CLEVELAND

Code: 405CLVD

Class: OIL

Spacing Orders

Order No	Unit Size
NONE	

Perforated Intervals

From	To
3184	3194

Acid Volumes

41 BARRELS, 475 BARRELS

Fracture Treatments

There are no Fracture Treatments records to display.
--

Formation Name: CLEVELAND

Code: 405CLVD

Class: OIL

Spacing Orders

Order No	Unit Size
NONE	

Perforated Intervals

From	To
3171	3179
3181	3183

Acid Volumes

3,000 GALLONS

Fracture Treatments

There are no Fracture Treatments records to display.
--

Formation Name: CLEVELAND

Code: 405CLVD

Class: OIL

Spacing Orders

Order No	Unit Size
NONE	

Perforated Intervals

From	To
3194	3200
3201	3220
3222	3224
3225	3230

Acid Volumes

There are no Acid Volume records to display.
--

Fracture Treatments

60,000 POUNDS SAND, 949 BARRELS

Formation	Top
TONKAWA	2435
LAYTON	2876
CLEVELAND	3170
OSWEGO	3252
BARTLESVILLE SAND	3474
MISSISSIPPI UNCONFORMITY	3496

Were open hole logs run? Yes

Date last log run: June 09, 2009

Were unusual drilling circumstances encountered? No

Explanation:

Other Remarks

A CIBP WAS SET OVER THE MISSISSIPPI CHAT AND THEN THE CLEVELAND FORMATION WAS FRAC'D.

FOR COMMISSION USE ONLY

1147319

Status: Accepted

API NO. 071-24311
OTC PROD. UNIT NO. 071-202022

Oil and Gas Conservation Division
P.O. Box 52000
Oklahoma City, OK 73152-2000
405-522-0577
OCCCentralProcessing@OCC.OK.GOV



OKLAHOMA
Corporation
Commission

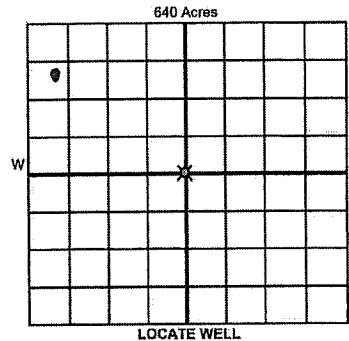
Form 1002A
Rev. 2020

ORIGINAL AMENDED (Reason) *Set Plug at 3444' Cleveland + Fracture Treat* Rule 165:10-3-25
COMPLETION REPORT

TYPE OF DRILLING OPERATION
☒ STRAIGHT HOLE ☐ DIRECTIONAL HOLE ☐ HORIZONTAL HOLE
☐ SERVICE WELL

If directional or horizontal, see reverse for bottom hole location.

COUNTY **Kay** SEC **34** TWP **29N** RGE **1W**
LEASE NAME **Vickery** WELL NO. **1-34** 1st PROD DATE **08/4/2009**
NE 1/4 SW 1/4 NW 1/4 NW 1/4 FSL ☒ **1865** FWL ☒ **610** RECOMP DATE **10/4/2021**
ELEVATION Derrick FL **1106** Ground **1093** Latitude Longitude
OPERATOR NAME **Barber Oil, LC** OTC / OCC OPERATOR NO. **24363**
ADDRESS **8801 South Yale Avenue, Suite 150**
CITY **Tulsa** STATE **OK** ZIP **74137**



COMPLETION TYPE

☒ SINGLE ZONE
☐ MULTIPLE ZONE
☐ COMMINGLED
LOCATION EXCEPTION ORDER NO.
MULTIUNIT ORDER NO.
INCREASED DENSITY ORDER NO.

CASING & CEMENT (Attach Form 1002C)

TYPE	SIZE	WEIGHT	GRADE	FEET	PSI	SAX	TOP OF CMT
CONDUCTOR							
SURFACE	8 5/8	24#		252		175	Surface
INTERMEDIATE							
PRODUCTION	5 1/2	15.5#		3520		2280	280
LINER							

PACKER @ BRAND & TYPE **GIBB** PLUG @ **3444'** TYPE **CEBP** PLUG @ TYPE
PACKER @ BRAND & TYPE PLUG @ TYPE PLUG @ TYPE
COMPLETION & TEST DATA BY PRODUCING FORMATION **405CLVD** TOTAL DEPTH **3524'**

FORMATION	Cleveland	Cleveland	Cleveland			
SPACING & SPACING ORDER NUMBER	none	none	none			
CLASS: Oil, Gas, Dry, Inj, Disp, Comm Disp, Svc	Oil	Oil	Oil			
PERFORATED INTERVALS	3184'-3194'	3171-3179'	3194'-3200'			
		3181'-3183'	3201'-3220'			
			3222'-3224'			
ACID/VOLUME	41 bbls	3000 gal	3225'-3230'			
	475 bbls		60,000# sand			
FRACTURE TREATMENT (Fluids/Prop Amounts)			949 bbls			

RECEIVED
NOV 29 2021

OKLAHOMA CORPORATION
COMMISSION

Min Gas Allowable (165:10-17-7)
OR
Oil Allowable (165:10-13-3)

Purchaser/Measurer
First Sales Date

INITIAL TEST DATA

INITIAL TEST DATE	08/04/2009	6/14/2021	10/7/2021		
OIL-BBL/DAY	20.04	1	2.08		
OIL-GRAVITY (API)	39	39	39		
GAS-MCF/DAY	62.6	0	0		
GAS-OIL RATIO CU FT/BBL	3124	0	0		
WATER-BBL/DAY	10.02	41	146		
PUMPING OR FLOWING	flow	pump	pump		
INITIAL SHUT-IN PRESSURE	390				
CHOKE SIZE	16/64				
FLOW TUBING PRESSURE	40				

A record of the formations drilled through and pertinent remarks are presented on the reverse. I declare that I have knowledge of the contents of this report and am authorized by my organization to make this report, which was prepared by me or under my supervision and direction, with the data and facts stated herein to be true, correct, and complete to the best of my knowledge and belief.

Barbara Courtney
SIGNATURE
8801 South Yale Ave, Suite 150
ADDRESS
Tulsa
CITY
OK
STATE
74137
ZIP
11/24/2021
DATE
918-638-5951
PHONE NUMBER
bcourtney@barberoilco.com
EMAIL ADDRESS

PLEASE TYPE OR USE BLACK INK ONLY
FORMATION RECORD

Give formation names and tops, if available, or descriptions and thickness of formations drilled through. Show intervals cored or drillstem tested.

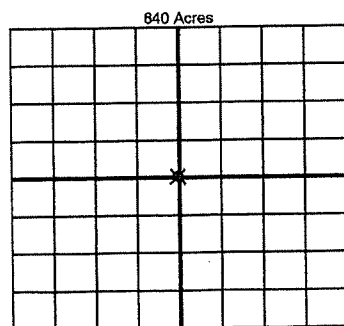
NAMES OF FORMATIONS	TOP
Tonkawa	2435'
Layton	2876'
Cleveland	3170'
Oswego	3252'
Bartlesville Sand	3474'
Mississippi Unc.	3496'

LEASE NAME _____ WELL NO. _____

FOR COMMISSION USE ONLY	
ITD on file <input type="checkbox"/> YES <input type="checkbox"/> NO	
APPROVED _____	DISAPPROVED _____
2) Reject Codes	

Were open hole logs run?	<input checked="" type="radio"/> yes <input type="radio"/> no
Date Last log was run	06/09/2009
Was CO ₂ encountered?	<input type="radio"/> yes <input checked="" type="radio"/> no at what depths? _____
Was H ₂ S encountered?	<input type="radio"/> yes <input checked="" type="radio"/> no at what depths? _____
Were unusual drilling circumstances encountered?	<input type="radio"/> yes <input checked="" type="radio"/> no
If yes, briefly explain below	

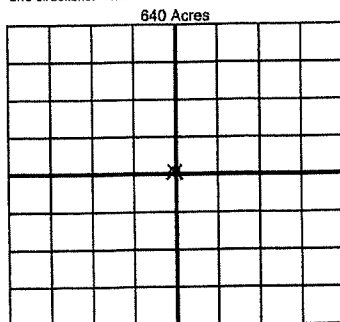
Other remarks: A CIBP was set over the Mississippi Chat and then the Cleveland formation was frac'd



If more than three drainholes are proposed, attach a separate sheet indicating the necessary information.

Direction must be stated in degrees azimuth. Please note, the horizontal drainhole and its end point must be located within the boundaries of the lease or spacing unit.

Directional surveys are required for all drainholes and directional wells



BOTTOM HOLE LOCATION FOR DIRECTIONAL HOLE

SEC	TWP	RGE	COUNTY
1/4	1/4	1/4	1/4
Measured Total Depth		True Vertical Depth	Feet From 1/4 Sec Lines BHL From Lease, Unit, or Property Line:

BOTTOM HOLE LOCATION FOR HORIZONTAL HOLE: (LATERALS)

LATERAL #1			
SEC	TWP	RGE	COUNTY
1/4	1/4	1/4	1/4
Depth of Deviation		Radius of Turn	Direction
Measured Total Depth		True Vertical Depth	Total Length
		BHL From Lease, Unit, or Property Line:	

LATERAL #2			
SEC	TWP	RGE	COUNTY
1/4	1/4	1/4	1/4
Depth of Deviation		Radius of Turn	Direction
Measured Total Depth		True Vertical Depth	Total Length
		BHL From Lease, Unit, or Property Line:	

LATERAL #3			
SEC	TWP	RGE	COUNTY
1/4	1/4	1/4	1/4
Depth of Deviation		Radius of Turn	Direction
Measured Total Depth		True Vertical Depth	Total Length
		BHL From Lease, Unit, or Property Line:	



November 24, 2021

Oklahoma Corporation Commission
P. O. Box 52000
Oklahoma City, OK 73152

ATTENTION: OIL & GAS

Re: 1002 A Recompletion Form
Vickery 1-34 – Section 34-29N-1W
Kay County, Oklahoma

Gentlemen:

Enclosed is an amended 1002A on the above well showing that a CIBP was set above the Mississippi Chat and a frac job was performed on the Cleveland formation.

Should you have any questions please call Mike Barber 918-671-6114 or me at 918-638-5951.

Yours truly,

Barbara Courtney
Landman

Enclosure

BARBER OIL LLC

8801 South Yale Avenue, Suite 150 Tulsa, Oklahoma 74137 918.671.6114