

Oklahoma Corporation Commission
Oil & Gas Conservation Division
Post Office Box 52000
Oklahoma City, Oklahoma 73152-2000
Rule 165: 10-3-25

Form 1002A

API No.: 35047244020001

Completion Report

Spud Date: October 09, 2006

OTC Prod. Unit No.:

Drilling Finished Date: October 16, 2006

Amended

1st Prod Date: December 01, 2006

Amend Reason: RECOMPLETION

Completion Date: November 07, 2006

Recomplete Date: October 08, 2020

Drill Type: STRAIGHT HOLE

Well Name: BELVEAL 42

Purchaser/Measurer:

Location: GARFIELD 24 22N 4W
C S2 SE NE
330 FSL 1980 FWL of 1/4 SEC
Latitude: 36.37027778 Longitude: -97.57
Derrick Elevation: 0 Ground Elevation: 1085

First Sales Date:

Operator: M M ENERGY INC 19118
PO BOX 21904
13927 QUAIL POINTE DR
OKLAHOMA CITY, OK 73134-1904

Completion Type		Location Exception		Increased Density	
X	Single Zone	Order No		Order No	
	Multiple Zone	There are no Location Exception records to display.		There are no Increased Density records to display.	
	Commingled				

Casing and Cement							
Type	Size	Weight	Grade	Feet	PSI	SAX	Top of CMT
SURFACE	9 5/8	24	J	315		200	SURFACE
PRODUCTION	7	17	J	4756		450	1904

Liner								
Type	Size	Weight	Grade	Length	PSI	SAX	Top Depth	Bottom Depth
There are no Liner records to display.								

Total Depth: 4756

Packer	
Depth	Brand & Type
There are no Packer records to display.	

Plug	
Depth	Plug Type
3400	CIBP
4250	CIBP
4530	CIBP

Initial Test Data

Test Date	Formation	Oil BBL/Day	Oil-Gravity (API)	Gas MCF/Day	Gas-Oil Ratio Cu FT/BBL	Water BBL/Day	Pumpin or Flowing	Initial Shut-In Pressure	Choke Size	Flow Tubing Pressure
Oct 10, 2020	PERRY						SWAB			
Nov 03, 2020	HOOVER	20	40			300	PUMPING			

Completion and Test Data by Producing Formation

Formation Name: PERRY

Code: 405PRRY

Class: DRY

Spacing Orders

Order No	Unit Size
NONE	

Perforated Intervals

From	To
3436	3446

Acid Volumes

1,500 GALLONS

Fracture Treatments

NONE

Formation Name: HOOVER

Code: 406HOVR

Class: OIL

Spacing Orders

Order No	Unit Size
NONE	

Perforated Intervals

From	To
2410	2480

Acid Volumes

2,500 GALLONS

Fracture Treatments

885 BARRELS, 50,690 POUNDS SAND

Formation	Top
-----------	-----

Were open hole logs run? Yes

Date last log run: October 16, 2006

Were unusual drilling circumstances encountered? No

Explanation:

Other Remarks
OCC - OPERATOR USED PORT COLLAR AT 3,300', AND USING 250 SACKS OF CEMENT, LIFTED CEMENT TO 1,904'. (SEE ORIGINAL 1002C'S)

FOR COMMISSION USE ONLY

1147320

Status: Accepted

API NO. 047-24402
OTC PROD.
UNIT NO.

PLEASE TYPE OR USE BLACK INK ONLY
NOTE:

Attach copy of original 1002A
if recompletion or reentry.

OKLAHOMA CORPORATION COMMISSION
Oil & Gas Conservation Division
Post Office Box 52000
Oklahoma City, Oklahoma 73152-2000
Rule 165:10-3-25

Form 1002A
Rev. 2009

☐ ORIGINAL
☒ AMENDED (Reason)

RE-COMPLETION

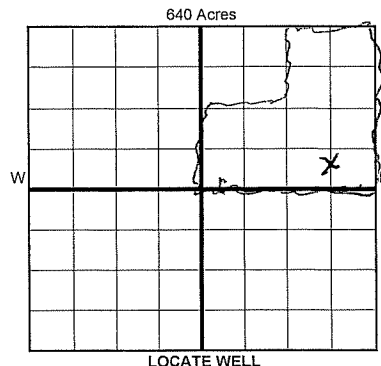
COMPLETION REPORT

TYPE OF DRILLING OPERATION

☒ STRAIGHT HOLE ☐ DIRECTIONAL HOLE ☐ HORIZONTAL HOLE
☐ SERVICE WELL

If directional or horizontal, see reverse for bottom hole location.

COUNTY	Garfield	SEC	24	TWP	22n	RGE	4w		
LEASE NAME	Belveal			WELL NO.	42				
C 1/4 s/2 1/4 se 1/4 ne 1/4	FSL OF 1/4 SEC	330	FWL OF 1/4 SEC	1980			DATE OF WELL COMPLETION	11/7/2006	
ELEVATION N Derrick	Ground	1085	Latitude (if known)				1st PROD DATE	12/1/2006	
OPERATOR NAME	MM Energy			OTC/OCC OPERATOR NO.	19118			RECOMP DATE	10-8-2020
ADDRESS	P O Box 21904								
CITY	Oklahoma City			STATE	OK	ZIP	73156		



COMPLETION TYPE

<input checked="" type="checkbox"/> SINGLE ZONE
<input type="checkbox"/> MULTIPLE ZONE
Application Date
<input type="checkbox"/> COMMINGLED
Application Date
LOCATION
EXCEPTION ORDER
INCREASED DENSITY
ORDER NO.

CASING & CEMENT (Form 1002C must be attached)

TYPE	SIZE	WEIGHT	GRADE	FEET	PSI	SAX	TOP OF CMT
CONDUCTOR							
SURFACE	9 5/8	24 lb	J	315		200	SURFACE
INTERMEDIATE							
PRODUCTION	7	17 lb	J	4756	450 200		3639 1904
LINER	PC	set	at	3300		250	1,904
							4,756

PACKER @ BRAND & TYPE CIBP PLUG @ 4250 TYPE CIBP PLUG @ 4530 TYPE CIBP
PACKER @ BRAND & TYPE CIBP PLUG @ 3400 TYPE CIBP PLUG @ TYPE

TOTAL DEPTH
earlier
1002A

Port Collier
score marks

COMPLETION & TEST DATA BY PRODUCING FORMATION 705 PRRY 406 HOUR

FORMATION	Perry	Hoover
SPACING & SPACING ORDER NUMBER	none	none
CLASS: Oil, Gas, Dry, Inj, Disp, Comm Disp, Svc	below oil Dry	oil
PERFORATED INTERVALS	3436-3446	2410-2480
ACID/VOLUME	1500 gallon	2500 gallon
FRACTURE TREATMENT (Fluids/Prop Amounts)	none	885 lb 50,630 lbs sand

RECEIVED

NOV 29 2021

OKLAHOMA CORPORATION
COMMISSION

☐ Min Gas Allowable
OR
☐ Oil Allowable (165:10-13-3)

Gas Purchaser/Measurer
First Sales Date

INITIAL TEST DATA

INITIAL TEST DATE	10/10/2020	11/3/2020
OIL-BBL/DAY	0	20
OIL-GRAVITY (API)		40
GAS-MCF/DAY	show	0
GAS-OIL RATIO CU FT/BBL		
WATER-BBL/DAY		300
PUMPING OR FLOWING	swab	pumping
INITIAL SHUT-IN PRESSURE	none	none
CHOKE SIZE		
FLOW TUBING PRESSURE		

A record of the formations drilled through, and pertinent remarks are presented on the reverse. I declare that I have knowledge of the contents of this report and am authorized by my organization to make this report, which was prepared by me or under my supervision and direction, with the data and facts stated herein to be true, correct, and complete to the best of my knowledge and belief.

Mike Murphy

11/30/2020 (405) 463-3355

SIGNATURE

NAME (PRINT OR TYPE)

DATE

PHONE NUMBER

P O Box 21904

Oklahoma City

OK

73156

mike@mmenergy.net

ADDRESS

CITY

STATE

ZIP

EMAIL ADDRESS

Give formation names and tops, if available, or descriptions and thickness of formations drilled through. Show intervals cored or drillstem tested.

NAMES OF FORMATIONS	TOP

		FOR COMMISSION USE ONLY	
ITD on file	<input type="checkbox"/> YES	<input type="checkbox"/> NO	
APPROVED	DISAPPROVED		2) Reject Codes
		<hr/>	
		<hr/>	
		<hr/>	
		<hr/>	
		<hr/>	

Were open hole logs run? X yes ___ no

Date Last log was run 10/16/2006

Was CO₂ encountered? ___ yes X no at what depths? _____

Was H₂S encountered? ___ yes X no at what depths? _____

Were unusual drilling circumstances encountered? ___ yes X no
If yes, briefly explain below

Other remarks: OCC - operator used port collar at 3300' and using 250 sacks of cement lifted cement to 1904' (see original 1002C's)

A large, empty 10x10 grid of squares, intended for drawing a picture. The grid is composed of thin black lines forming the squares.

If more than three drainholes are proposed, attach a separate sheet indicating the necessary information.

Direction must be stated in degrees azimuth.
Please note, the horizontal drainhole and its end
point must be located within the boundaries of the
lease or spacing unit.

Directional surveys are required for all drainholes and directional wells.

SEC	TWP	RGE	COUNTY
Spot Location			
1/4	1/4	1/4	1/4
Measured Total Depth	True Vertical Depth	BHL From Lease, Unit, or Property Line:	

LATERAL #1							
SEC	TWP	RGE	COUNTY				
Spot Location							
1/4		1/4		1/4	Feet From 1/4 Sec Lines	FSL	FWL
Depth of Deviation		Radius of Turn		Direction		Total Length	
Measured Total Depth		True Vertical Depth		BHL From Lease, Unit, or Property Line:			

LATERAL #2							
SEC	TWP	RGE	COUNTY				
Spot Location							
1/4	1/4	1/4	1/4	Feet From 1/4 Sec Lines		FSL	FWL
Depth of Deviation		Radius of Turn		Direction		Total Length	
Measured Total Depth		True Vertical Depth		BHL From Lease, Unit, or Property Line:			

LATERAL #3							
SEC	TWP	RGE	COUNTY				
Spot Location		1/4	1/4	1/4	Feet From 1/4 Sec Lines	FSL	FWL
Depth of Deviation		Radius of Turn		Direction		Total Length	
Measured Total Depth		True Vertical Depth		BHL From Lease, Unit, or Property Line:			