

Oklahoma Corporation Commission
Oil & Gas Conservation Division
Post Office Box 52000
Oklahoma City, Oklahoma 73152-2000
Rule 165: 10-3-25

Form 1002A

API No.: 35071244500004

Completion Report

Spud Date: September 21, 2011

OTC Prod. Unit No.: 071-206566-0-0000

Drilling Finished Date: September 27, 2011

Amended

1st Prod Date: May 13, 2011

Amend Reason: PERFORATIONS TO CLEVELAND FRACTURE TREATED

Completion Date: May 13, 2011

Recomplete Date: July 20, 2021

Drill Type: STRAIGHT HOLE

Well Name: CONSTANT 1-27

Purchaser/Measurer:

Location: KAY 27 29N 1W
C SE SE SW
330 FSL 2310 FWL of 1/4 SEC
Derrick Elevation: 1117 Ground Elevation: 1107

First Sales Date:

Operator: BARBER OIL LLC 24363

8801 S YALE AVE STE 150
TULSA, OK 74137-3575

Completion Type		Location Exception		Increased Density	
	Single Zone	Order No		Order No	
	Multiple Zone	588454		There are no Increased Density records to display.	
X	Commingled				

Casing and Cement							
Type	Size	Weight	Grade	Feet	PSI	SAX	Top of CMT
SURFACE	8 5/8	24	J	302		220	SURFACE
PRODUCTION	5.5	15.5	J	3678		350	2100

Liner								
Type	Size	Weight	Grade	Length	PSI	SAX	Top Depth	Bottom Depth
There are no Liner records to display.								

Total Depth: 3682

Packer		Plug	
Depth	Brand & Type	Depth	Plug Type
There are no Packer records to display.		3460	CIBP

Initial Test Data										
Test Date	Formation	Oil BBL/Day	Oil-Gravity (API)	Gas MCF/Day	Gas-Oil Ratio Cu FT/BBL	Water BBL/Day	Pumpin or Flowing	Initial Shut-In Pressure	Choke Size	Flow Tubing Pressure
Jul 24, 2021	COMMINGLED	1.7	41			160	PUMPING			

Completion and Test Data by Producing Formation

Formation Name: CLEVELAND

Code: 405CLVD

Class: OIL

Spacing Orders

Order No	Unit Size
570305	160

Perforated Intervals

From	To
3187	3189
3197	3200
3202	3208
3226	3244

Acid Volumes

2,500 GALLONS

Fracture Treatments

NONE

Formation Name: CLEVELAND

Code: 405CLVD

Class: GAS

Spacing Orders

Order No	Unit Size
570305	160

Perforated Intervals

From	To
3189	3197
3208	3226

Acid Volumes

2,000 GALLONS

Fracture Treatments

873 BARRELS, 54,900 POUNDS SAND

Formation Name: CLEVELAND

Code: 405CLVD

Class: OIL

Spacing Orders

Order No	Unit Size
570305	160

Perforated Intervals

From	To
3187	3244

Acid Volumes

There are no Acid Volume records to display.
--

Fracture Treatments

59,500 POUNDS SAND, 772 BARRELS

Formation Name: OSWEGO

Code: 404OSWG

Class: GAS

Spacing Orders

Order No	Unit Size
570305	160

Perforated Intervals

From	To
3322	3332
3359	3361

Acid Volumes

2,500 GALLONS

Fracture Treatments

NONE

Formation Name: COMMINGLED

Code: 000CMGL

Class: OIL

Formation	Top
TONKAWA	2400
CLEVELAND	3182
OSWEGO	3272
MISSISSIPPI CHAT	3494
MISSISSIPPI LIME	3508
WILCOX	3666

Were open hole logs run? Yes

Date last log run: September 25, 2011

Were unusual drilling circumstances encountered? No

Explanation:

Other Remarks

THIS 1002A IS SUBMITTED FOR THE PURPOSE OF SHOWING THAT THE EXISTING PERFORATIONS IN THE CLEVELAND FORMATION WERE FRAC'D.

FOR COMMISSION USE ONLY

1147317

Status: Accepted

API NO. 071-24450X
OTC PROD. UNIT NO. 071-206566

Oil and Gas Conservation Division
P.O. Box 52000
Oklahoma City, OK 73152-2000
405-522-0577
OCCCentralProcessing@OCC.OK.GOV



OKLAHOMA
Corporation
Commission

Form 1002A
Rev. 2020

ORIGINAL
AMENDED (Reason)

Rule 165-10-3-25

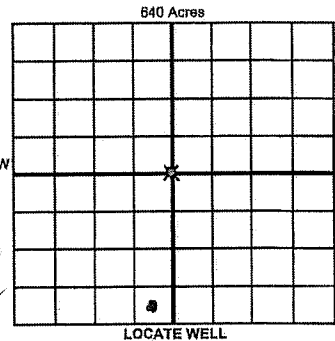
COMPLETION REPORT

TYPE OF DRILLING OPERATION

☒ STRAIGHT HOLE ☐ DIRECTIONAL HOLE ☐ HORIZONTAL HOLE
☐ SERVICE WELL

If directional or horizontal, see reverse for bottom hole location.

COUNTY	Kay	SEC	27	TWP	29N	RGE	1W	SPUD DATE	9/21/2011
LEASE NAME	Constant							DRLG FINISHED DATE	9/27/2011
C	1/4	SE	1/4	SE	1/4	SW	1/4	DATE OF WELL COMPLETION	5/13/2011
ELEVATION	1117	Ground	1107	WELL NO.	1-27	1st PROD DATE	5/13/2011	RECOMP DATE	6/24/2011
OPERATOR NAME	Barber Oil, LC							OTC / OCC OPERATOR NO.	24363
ADDRESS	8801 South Yale Avenue, Suite 150								
CITY	Tulsa			STATE	OK		ZIP	74137	



COMPLETION TYPE

<input type="radio"/> SINGLE ZONE	
<input type="radio"/> MULTIPLE ZONE	
<input type="radio"/> Application Date	
<input type="radio"/> COMMINGLED	
<input type="radio"/> Application Date	
LOCATION EXCEPTION ORDER NO.	588454
MULTIUNIT ORDER NO.	
INCREASED DENSITY ORDER NO.	

CASING & CEMENT (Attach Form 1002C)

TYPE	SIZE	WEIGHT	GRADE	FEET	PSI	SAX	TOP OF CMT
CONDUCTOR							
SURFACE	8 5/8"	24#	J	302		220	Surface
INTERMEDIATE							
PRODUCTION	5.5"	15.5#	J	3678		350	2100'
LINER							

PACKER @	BRAND & TYPE	TYPE	PLUG @	3460'	TYPE	PLUG @	TYPE	TOTAL DEPTH	3682'
PACKER @	BRAND & TYPE	TYPE	PLUG @	TYPE	PLUG @	TYPE			

COMPLETION & TEST DATA BY PRODUCING FORMATION

FORMATION	Cleveland	Cleveland	Cleveland	Oswego	
SPACING & SPACING ORDER NUMBER	570305 (160)	570305 (160)	570305 (160)	570305 (160)	
CLASS: Oil, Gas, Dry, Inj, Disp, Comm Disp, Svc	Oil	Gas	Oil	Gas	
PERFORATED INTERVALS	3187'-3189'	3189'-3197'	3187'-3244'	3322'-3332'	
	3197'-3200'	3208'-3226'		3359'-3361'	
	3202'-3208'				
ACID/VOLUME	3226'-3244'	2000 gal		2500 gal	
FRACTURE TREATMENT (Fluids/Prop Amounts)	acid 2500 gal no frac	873 bbls, 54,900 # Sand	59,500 # sand 772 bbls	no frac	

RECEIVED

NOV 29 2021

OKLAHOMA CORPORATION
COMMISSION

Min Gas Allowable (165-10-17-7)
OR
Oil Allowable (165-10-13-3)

Purchaser/Measurer
First Sales Date

INITIAL TEST DATA

INITIAL TEST DATE	6/25/2021	5/10/2012	7/24/2021	5/1/2012
OIL-BBL/DAY	3.75 from all zones	20	1.667 from both zones	5
OIL-GRAVITY (API)	41	41	41	40
GAS-MCF/DAY	0	330	0	80
GAS-OIL RATIO CU FT/BBL	nan	16500	nan	16000
WATER-BBL/DAY	141 from all zones	2	160	5
PUMPING OR FLOWING	pumping	flow	pumping	Flow
INITIAL SHUT-IN PRESSURE	N/A	800	N/A	550
CHOKE SIZE	N/A	1/4"	N/A	1/4"
FLOW TUBING PRESSURE	N/A	160	N/A	40

A record of the formations drilled through, and pertinent remarks are presented on the reverse. I declare that I have knowledge of the contents of this report and am authorized by my organization to make this report, which was prepared by me or under my supervision and direction, with the data and facts stated herein to be true, correct, and complete to the best of my knowledge and belief.

SIGNATURE	Barbara Courtney	NAME (PRINT OR TYPE)	Barbara Courtney	DATE	11/23/2021	PHONE NUMBER	918-638-6961
ADDRESS	8801 South Yale Ave, Suite 150	CITY	Tulsa	STATE	OK	ZIP	74137
						EMAIL ADDRESS	bcourtney@barberoilco.com

PLEASE TYPE OR USE BLACK INK ONLY

FORMATION RECORD

Give formation names and tops, if available, or descriptions and thickness of formations drilled through. Show intervals cored or drillstem tested.

NAMES OF FORMATIONS	TOP
Tonkawa	2400
Cleveland	3182
Oswego	3272
Miss Chat	3494
Miss Lime	3508
Wilcox	3666

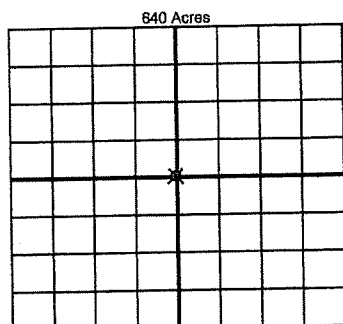
LEASE NAME _____

WELL NO. _____

FOR COMMISSION USE ONLY	
ITD on file <input type="checkbox"/> YES <input type="checkbox"/> NO	
APPROVED _____	DISAPPROVED _____
2) Reject Codes	

Were open hole logs run?	<input checked="" type="radio"/> yes <input type="radio"/> no
Date Last log was run	9/29/2011
Was CO ₂ encountered?	<input type="radio"/> yes <input checked="" type="radio"/> no at what depths? _____
Was H ₂ S encountered?	<input type="radio"/> yes <input checked="" type="radio"/> no at what depths? _____
Were unusual drilling circumstances encountered?	<input type="radio"/> yes <input checked="" type="radio"/> no
If yes, briefly explain below	

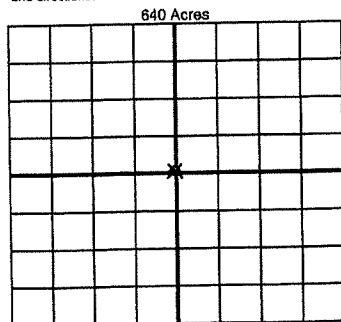
Other remarks: This 1002A is submitted for the purpose of showing that the existing perfs in the Cleveland formation were frac'd.



If more than three drainholes are proposed, attach a separate sheet indicating the necessary information.

Direction must be stated in degrees azimuth. Please note, the horizontal drainhole and its end point must be located within the boundaries of the lease or spacing unit.

Directional surveys are required for all drainholes and directional wells



BOTTOM HOLE LOCATION FOR DIRECTIONAL HOLE

SEC	TWP	RGE	COUNTY
1/4	1/4	1/4	1/4
Measured Total Depth		True Vertical Depth	Feet From 1/4 Sec Lines BHL From Lease, Unit, or Property Line:

BOTTOM HOLE LOCATION FOR HORIZONTAL HOLE: (LATERALS)

LATERAL #1			
SEC	TWP	RGE	COUNTY
1/4	1/4	1/4	1/4
Depth of Deviation		Radius of Turn	Direction
Measured Total Depth		True Vertical Depth	Total Length
		BHL From Lease, Unit, or Property Line:	

LATERAL #2			
SEC	TWP	RGE	COUNTY
1/4	1/4	1/4	1/4
Depth of Deviation		Radius of Turn	Direction
Measured Total Depth		True Vertical Depth	Total Length
		BHL From Lease, Unit, or Property Line:	

LATERAL #3			
SEC	TWP	RGE	COUNTY
1/4	1/4	1/4	1/4
Depth of Deviation		Radius of Turn	Direction
Measured Total Depth		True Vertical Depth	Total Length
		BHL From Lease, Unit, or Property Line:	