

Oklahoma Corporation Commission
Oil & Gas Conservation Division
Post Office Box 52000
Oklahoma City, Oklahoma 73152-2000
Rule 165: 10-3-25

Form 1002A

API No.: 35019242510001

Completion Report

Spud Date: January 07, 2021

OTC Prod. Unit No.: 019-226592-0-5383

Drilling Finished Date: January 14, 2021

1st Prod Date:

Completion Date: March 17, 2021

Amended

Amend Reason: RE-ENTRY / CONVERT TO INJECTION WELL

Drill Type: STRAIGHT HOLE

SERVICE WELL

Well Name: SW WILDCAT JIM DEESE UNIT (GAINEY 1-12) 13-1

Purchaser/Measurer:

Location: CARTER 12 2S 3W
W2 NE SE NE
1650 FNL 537 FEL of 1/4 SEC
Latitude: 34.400774 Longitude: -97.459227
Derrick Elevation: 0 Ground Elevation: 988

First Sales Date:

Operator: MACK ENERGY CO 11739

4700 GAILLARDIA PKWY STE 102
OKLAHOMA CITY, OK 73142-1839

Completion Type		Location Exception		Increased Density	
X	Single Zone	Order No		Order No	
	Multiple Zone	There are no Location Exception records to display.		There are no Increased Density records to display.	
	Commingled				

Casing and Cement							
Type	Size	Weight	Grade	Feet	PSI	SAX	Top of CMT
SURFACE	8 5/8	24	J-55	1305	950	570	SURFACE
PRODUCTION	5 1/2	17	K-55	4540		500	SURFACE

Liner								
Type	Size	Weight	Grade	Length	PSI	SAX	Top Depth	Bottom Depth
There are no Liner records to display.								

Total Depth: 4542

Packer		Plug	
Depth	Brand & Type	Depth	Plug Type
3098	UNKNOWN	There are no Plug records to display.	

Initial Test Data

Test Date	Formation	Oil BBL/Day	Oil-Gravity (API)	Gas MCF/Day	Gas-Oil Ratio Cu FT/BBL	Water BBL/Day	Pumpin or Flowing	Initial Shut-In Pressure	Choke Size	Flow Tubing Pressure
-----------	-----------	-------------	-------------------	-------------	-------------------------	---------------	-------------------	--------------------------	------------	----------------------

There are no Initial Data records to display.

Completion and Test Data by Producing Formation

Formation Name: DEESE

Code: 404DEESS

Class: INJ

Spacing Orders

Order No	Unit Size
701901	UNIT

Perforated Intervals

From	To
4221	4368

Acid Volumes

2,000 GALLONS 7.5% NEFE, 1,200 POUNDS RS

Fracture Treatments

There are no Fracture Treatments records to display.

Formation Name: DEESE

Code: 404DEESS

Class: INJ

Spacing Orders

Order No	Unit Size
701901	UNIT

Perforated Intervals

From	To
4091	4108

Acid Volumes

600 GALLONS 7.5% NEFE, 350 POUNDS RS

Fracture Treatments

There are no Fracture Treatments records to display.

Formation Name: DEESE

Code: 404DEESS

Class: INJ

Spacing Orders

Order No	Unit Size
701901	UNIT

Perforated Intervals

From	To
3951	3961

Acid Volumes

500 GALLONS 7.5% NEFE, 250 POUNDS RS

Fracture Treatments

There are no Fracture Treatments records to display.

Formation Name: DEESE

Code: 404DEESS

Class: INJ

Spacing Orders

Order No	Unit Size
701901	UNIT

Perforated Intervals

From	To
3756	3780

Acid Volumes

650 GALLONS 7.5% NEFE, 350 POUNDS RS

Fracture Treatments

There are no Fracture Treatments records to display.

Formation Name: DEESE		Code: 404DEESS	Class: INJ
Spacing Orders		Perforated Intervals	
Order No	Unit Size	From	To
701901	UNIT	3425	3463
		3523	3690
Acid Volumes		Fracture Treatments	
1,200 GALLONS 7.5% NEFE, 750 POUNDS RS; 750 GALLONS 7.5% NEFE, 450 POUNDS RS		There are no Fracture Treatments records to display.	

Formation Name: DEESE		Code: 404DEESS	Class: INJ
Spacing Orders		Perforated Intervals	
Order No	Unit Size	From	To
701901	UNIT	3123	3150
Acid Volumes		Fracture Treatments	
1,200 GALLONS 7.5% NEFE, 750 POUNDS RS		There are no Fracture Treatments records to display.	

Formation	Top
DEESE	2849
FUSULINID	2970
EASON	3295
TUSSY A	3425
TUSSY B	3522
TUSSY C	3633
CARPENTER	3756
LOWER CARPENTER	3904
MORRIS	4085
MORRIS LOW	4208

Were open hole logs run? Yes

Date last log run: January 12, 2021

Were unusual drilling circumstances encountered? No

Explanation:

Other Remarks
THIS WELL IS PART OF THE NEWLY FORMED SOUTHWEST WILDCAT JIM DEESE UNIT. OCC - WELL NAME FORMERLY GAINEY 1-12. OCC - UIC PERMIT NUMBER 2100402304

FOR COMMISSION USE ONLY	
Status: Accepted	1147313

RECEIVED

Form 1002A
Rev. 2009

APR 16 2021

API NO. 019-24251
OTC PROD. 019-226592-
UNIT NO. 0-5383

(PLEASE TYPE OR USE BLACK INK ONLY)

OKLAHOMA CORPORATION COMMISSION
Oil & Gas Conservation Division
Post Office Box 52000
Oklahoma City, Oklahoma 73162-2000
Rule 165:10-3-25

☐ ORIGINAL
☒ AMENDED (Reason)

Re-Entry, Convert to Inj Well

COMPLETION REPORT

TYPE OF DRILLING OPERATION

☒ STRAIGHT HOLE ☐ DIRECTIONAL HOLE ☐ HORIZONTAL HOLE
☒ SERVICE WELL

If directional or horizontal, see reverse for bottom hole location.

COUNTY	Carter	SEC	12	TWP	2S	RGE	3W	SPUD DATE	1-7-21
LEASE NAME	SW Wildcat J. SW WJDU Deese Unit			WELL NO.	13-1			DRLG FINISHED DATE	1-14-21
W/2 1/4 NE 1/4 SE 1/4 NE 1/4	1/4 SEC 1650'			(FEL) 1/4 SEC	537'			DATE OF WELL COMPLETION	3-17-21
ELEVATION	Ground	988'	Latitude (if known)	34.400774			Longitude (if known)	97.459227	
OPERATOR NAME	Mack Energy Co.				OTC / OCC OPERATOR NO.	11739			
ADDRESS	P.O. Box 400								
CITY	Duncan			STATE	OK		ZIP	73534	

640 Acres									
LOCATE WELL									

COMPLETION TYPE

<input checked="" type="checkbox"/> SINGLE ZONE	
<input type="checkbox"/> MULTIPLE ZONE	
Application Date	
<input type="checkbox"/> COMMINGLED	
Application Date	
LOCATION EXCEPTION ORDER NO.	
INCREASED DENSITY ORDER NO.	

CASING & CEMENT (Attach Form 1002C)

TYPE	SIZE	WEIGHT	GRADE	FEET	PSI	SAX	TOP OF CMT
CONDUCTOR							
SURFACE	8 5/8"	24#	J-55	1305'	950	570	Surface
INTERMEDIATE							
PRODUCTION	5 1/2"	17#	K-55	4540'		169 500	Surface
LINER							
TOTAL DEPTH						4542'	

PACKER @ 3098 BRAND & TYPE unknown PLUG @ TYPE PLUG @ TYPE
PACKER @ BRAND & TYPE PLUG @ TYPE PLUG @ TYPE

COMPLETION & TEST DATA BY PRODUCING FORMATION

FORMATION	(L. Morris)	(U. Morris)	(L. Carpenter)	(U. Carpenter)	(Tussy)	(Fusulina Sd)
SPACING & SPACING	10-acre/ 701901	10-acre/ 701901	10-acre/ 701901	10-acre/ 701901	10-acres	10-acres
ORDER NUMBER	unit	unit	unit	unit	unit	unit
CLASS: Oil, Gas, Dry, Inj, Disp, Comm Disp, Svc	Inj	Inj	Inj	Inj	Inj	Inj
PERFORATED INTERVALS	4221' - 4368'	4091-4108'	3951 - 3961'	3756'-3780'	3523-3690'	3123-3150'
ACID VOLUME	2000 gals 7.5% NeFe, 1200# r.s.	600 gals 7.5% NeFe, 350# rs	500 gals 7.5% NeFe, 250# rs	650 gals 7.5% NeFe, 350# rs	750 gals 7.5% NeFe, 450# rs	1200 gals 7.5% NeFe, 750# rs
FRACTURE TREATMENT (Fluids/Prop Amounts)						

in place

see 1002C

All Deese No Frac

☐ Mtn Gas Allowable (165:10-17-7) Gas Purchaser/Measurer
OR
☐ Oil Allowable (165:10-13-3) First Sales Date

INITIAL TEST DATA

INITIAL TEST DATE	-injector - N/A				
OIL-BBL/DAY					
OIL-GRAVITY (API)					
GAS-MCF/DAY					
GAS-OIL RATIO CU FT/BBL					
WATER-BBL/DAY					
PUMPING OR FLOWING					
INITIAL SHUT-IN PRESSURE					
CHOKE SIZE					
FLOW TUBING PRESSURE					

A record of the formations drilled through, and pertinent remarks are presented on the reverse. I declare that I have knowledge of the contents of this report and am authorized by my organization to make this report, which was prepared by me or under my supervision and direction, with the data and facts stated herein to be true, correct, and complete to the best of my knowledge and belief.

SIGNATURE	Dinah Mayes	DATE	4/14/2021	PHONE NUMBER	580-856-3705
ADDRESS	3730 Samedan Road	CITY	Ratliff City	STATE	OK
		ZIP	73481	EMAIL ADDRESS	dmayes@mackenergy.com

PLEASE TYPE OR USE BLACK INK ONLY
FORMATION RECORD

Give formation names and tops, if available, or descriptions and thickness of formations drilled through. Show intervals cored or drillstem tested.

LEASE NAME SW WJDU

WELL NO. 13-1

NAMES OF FORMATIONS	TOP
Deese	2849'
Fusulinid	2970'
Eason	3295'
Tussy A	3425'
Tussy B	3522'
Tussy C	3633'
Carpenter	3756'
L. Carpenter	3904'
Morris	4085'
L. Morris	4208'

FOR COMMISSION USE ONLY

ITD on file ☐ YES ☐ NO

APPROVED _____ DISAPPROVED _____

2) Reject Codes _____

Were open hole logs run? ☒ yes ☐ no

Date Last log was run 1/12/2021

Was CO₂ encountered? ☐ yes ☒ no at what depths? _____

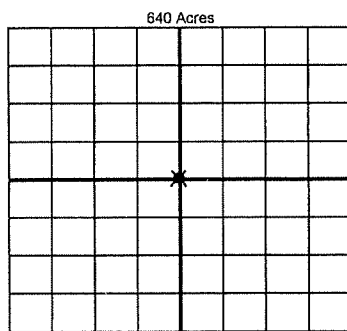
Was H₂S encountered? ☐ yes ☒ no at what depths? _____

Were unusual drilling circumstances encountered? ☐ yes ☒ no

If yes, briefly explain below _____

Other remarks: This well is part of the newly formed Southwest Wildcat Jim Deese Unit OCC - Formerly Gainey 1-12

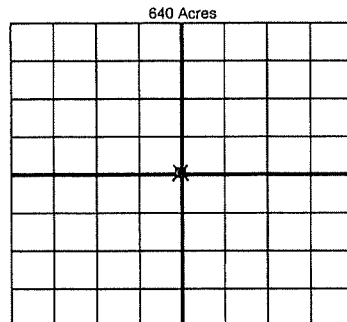
OCC - UIC permit 2100402304



If more than three drainholes are proposed, attach a separate sheet indicating the necessary information.

Direction must be stated in degrees azimuth. Please note, the horizontal drainhole and its end point must be located within the boundaries of the lease or spacing unit.

Directional surveys are required for all drainholes and directional wells.



BOTTOM HOLE LOCATION FOR DIRECTIONAL HOLE

SEC	TWP	RGE	COUNTY
Spot Location		Feet From 1/4 Sec Lines	FSL
1/4	1/4	1/4	1/4
Measured Total Depth		True Vertical Depth	BHL From Lease, Unit, or Property Line:

BOTTOM HOLE LOCATION FOR HORIZONTAL HOLE: (LATERALS)

LATERAL #1

SEC	TWP	RGE	COUNTY
Spot Location		Feet From 1/4 Sec Lines	FSL
1/4	1/4	1/4	1/4
Depth of Deviation	Radius of Turn	Direction	Total Length
Measured Total Depth	True Vertical Depth	BHL From Lease, Unit, or Property Line:	

LATERAL #2

SEC	TWP	RGE	COUNTY
Spot Location		Feet From 1/4 Sec Lines	FSL
1/4	1/4	1/4	1/4
Depth of Deviation	Radius of Turn	Direction	Total Length
Measured Total Depth	True Vertical Depth	BHL From Lease, Unit, or Property Line:	

LATERAL #3

SEC	TWP	RGE	COUNTY
Spot Location		Feet From 1/4 Sec Lines	FSL
1/4	1/4	1/4	1/4
Depth of Deviation	Radius of Turn	Direction	Total Length
Measured Total Depth	True Vertical Depth	BHL From Lease, Unit, or Property Line:	