

Oklahoma Corporation Commission  
Oil & Gas Conservation Division  
Post Office Box 52000  
Oklahoma City, Oklahoma 73152-2000  
Rule 165: 10-3-25

Form 1002A

API No.: 35047244050001

**Completion Report**

Spud Date: October 20, 2006

OTC Prod. Unit No.:

Drilling Finished Date: October 28, 2006

**Amended**

1st Prod Date: December 15, 2006

Amend Reason: RECOMPLETION

Completion Date: December 01, 2006

Recomplete Date: November 16, 2020

**Drill Type: STRAIGHT HOLE**

Well Name: SOUTH WALKER 44

Purchaser/Measurer:

Location: GARFIELD 24 22N 4W  
N2 S2 SE SE  
560 FSL 1980 FWL of 1/4 SEC  
Latitude: 36.36305556 Longitude: -97.57166667  
Derrick Elevation: 0 Ground Elevation: 1075

First Sales Date:

Operator: M M ENERGY INC 19118  
PO BOX 21904  
13927 QUAIL POINTE DR  
OKLAHOMA CITY, OK 73134-1904

Completion Type	
X	Single Zone
	Multiple Zone
	Commingled

Location Exception	
Order No	
There are no Location Exception records to display.	

Increased Density	
Order No	
There are no Increased Density records to display.	

Casing and Cement							
Type	Size	Weight	Grade	Feet	PSI	SAX	Top of CMT
SURFACE	9 5/8	24	J	330		150	SURFACE
PRODUCTION	7	17	J	4825		370	2471

Liner								
Type	Size	Weight	Grade	Length	PSI	SAX	Top Depth	Bottom Depth
There are no Liner records to display.								

**Total Depth: 4825**

Packer	
Depth	Brand & Type
There are no Packer records to display.	

Plug	
Depth	Plug Type
2496	CIBP
4250	CIBP
4570	CIBP

Initial Test Data
-------------------

Test Date	Formation	Oil BBL/Day	Oil-Gravity (API)	Gas MCF/Day	Gas-Oil Ratio Cu FT/BBL	Water BBL/Day	Pumpin or Flowing	Initial Shut-In Pressure	Choke Size	Flow Tubing Pressure
Nov 18, 2020	LAYTON					300	SWAB			
Nov 30, 2020	HOOVER	15	40			200	PUMPING			

#### Completion and Test Data by Producing Formation

Formation Name: LAYTON

Code: 405LYTN

Class: DRY

##### Spacing Orders

Order No	Unit Size
NONE	

##### Perforated Intervals

From	To
3770	3780

##### Acid Volumes

1,000 GALLONS
---------------

##### Fracture Treatments

NONE
------

Formation Name: HOOVER

Code: 406HOVR

Class: OIL

##### Spacing Orders

Order No	Unit Size
NONE	

##### Perforated Intervals

From	To
2410	2440

##### Acid Volumes

2,500 GALLONS
---------------

##### Fracture Treatments

960 BARRELS, 45 K SAND
------------------------

Formation	Top
HOOVER	2390
LAYTON	3742
OSWEGO	4380
ARBUCKLE	4590

Were open hole logs run? Yes

Date last log run: October 16, 2006

Were unusual drilling circumstances encountered? No

Explanation:

#### Other Remarks

OCC - OPERATOR USED PORT COLLAR AT 3,308', AND USING 150 SACKS OF CEMENT, LIFTED CEMENT TO 2,471'. (SEE ORIGINAL 1002C'S)

#### FOR COMMISSION USE ONLY

1147321

Status: Accepted

API NO. 047-24405  
OTC PROD.  
UNIT NO.

PLEASE TYPE OR USE BLACK INK ONLY  
NOTE:

Attach copy of original 1002A  
if recompletion or reentry.

OKLAHOMA CORPORATION COMMISSION  
Oil & Gas Conservation Division  
Post Office Box 52000  
Oklahoma City, Oklahoma 73152-2000  
Rule 165:10-3-25

Form 1002A  
Rev. 2009

☐ ORIGINAL  
☒ AMENDED (Reason)

RE-COMPLETION

COMPLETION REPORT

TYPE OF DRILLING OPERATION

☒ STRAIGHT HOLE ☐ DIRECTIONAL HOLE ☐ HORIZONTAL HOLE  
☐ SERVICE WELL

If directional or horizontal, see reverse for bottom hole location.

COUNTY Garfield SEC 24 TWP 22n RGE 4W  
LEASE NAME south walker  
WELL NO. 44  
N 1/2 1/4 S 2 1/4 SE 1/4 SE 1/4 FSL OF 1/4 SEC 560 FWL OF 1/4 SEC 1980  
ELEVATION Ground 1075 Latitude (if known)  
Longitude (if known)  
OPERATOR NAME MM Energy OTC/OCC OPERATOR NO. 19118  
ADDRESS P O Box 21904  
CITY Oklahoma City STATE OK ZIP 73156

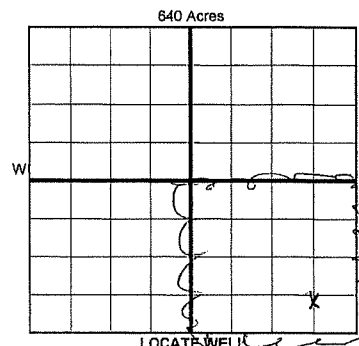
SPUD DATE 10/20/2006

DRLG FINISHED DATE 10/28/2006

DATE OF WELL COMPLETION 12/1/2006

1st PROD DATE 12/15/2006

RECOMP DATE 11/16/2020



COMPLETION TYPE

☒ SINGLE ZONE  
☐ MULTIPLE ZONE  
Application Date  
COMINGLED  
Application Date  
LOCATION  
EXCEPTION ORDER  
INCREASED DENSITY  
ORDER NO.

CASING & CEMENT (Form 1002C must be attached)

TYPE	SIZE	WEIGHT	GRADE	FEET	PSI	SAX	TOP OF CMT
CONDUCTOR							
SURFACE	9 5/8	24 lb	J	330		150	SURFACE
INTERMEDIATE							
PRODUCTION	7	17 lb	J	4825	370 220	359T 2471	
LINER	RC	set	at	3308	150	2,471	
							4,825

PACKER @ BRAND & TYPE

PLUG @ 4250 TYPE CIBP

PLUG @ 2496 TYPE CIBP

PACKER @ BRAND & TYPE

PLUG @ 4570 TYPE CIBP

PLUG @ TYPE

COMPLETION & TEST DATA BY PRODUCING FORMATION

FORMATION	Layton	Hoover	
SPACING & SPACING ORDER NUMBER	none	none	
CLASS: Oil, Gas, Dry, Inj, Disp, Comm Disp, Svc	oil	oil	
PERFORATED INTERVALS	3770-3780	2410-2440	
ACID/VOLUME	1000 gallon	2500 gallon	
FRACTURE TREATMENT (Fluids/Prop Amounts)	none	960 bl 45 k sand	

Min Gas Allowable (165:10-17-7)

☐

OR

Oil Allowable (165:10-13-3)

Gas Purchaser/Measurer

First Sales Date

INITIAL TEST DATA

INITIAL TEST DATE	11/18/2020	11/30/2020
OIL-BBL/DAY	slight show	15
OIL-GRAVITY (API)		40
GAS-MCF/DAY	0	0
GAS-OIL RATIO CU FT/BBL		
WATER-BBL/DAY	300	200
PUMPING OR FLOWING	swab	pumping
INITIAL SHUT-IN PRESSURE		
CHOKE SIZE		
FLOW TUBING PRESSURE		

A record of the formations drilled through and pertinent remarks are presented on the reverse. I declare that I have knowledge of the contents of this report and am authorized by my organization to make this report, which was prepared by me or under my supervision and direction, with the data and facts stated herein to be true, correct, and complete to the best of my knowledge and belief.

SIGNATURE Mike Murphy  
NAME (PRINT OR TYPE) Mike Murphy  
DATE 11/30/2020  
PHONE NUMBER (405) 463-3355  
ADDRESS P O Box 21904  
CITY Oklahoma City  
STATE OK  
ZIP 73156  
EMAIL ADDRESS mike@mmenergy.net

PLEASE TYPE OR USE BLACK INK ONLY  
FORMATION RECORD

Give formation names and tops, if available, or descriptions and thickness of formations drilled through. Show intervals cored or drillstem tested.

LEASE NAME south walker

WELL NO. 44

NAMES OF FORMATIONS	TOP
Hoover	2,390
Layton	3,742
Oswego	4380
Arbuckle	4,590

FOR COMMISSION USE ONLY	
ITD on file <input type="checkbox"/> YES <input type="checkbox"/> NO	
APPROVED _____	DISAPPROVED _____
2) Reject Codes	
_____	
_____	
_____	
_____	

Were open hole logs run?	<input checked="" type="checkbox"/> yes <input type="checkbox"/> no
Date Last log was run	<u>10/16/2006</u>
Was CO <sub>2</sub> encountered?	<input type="checkbox"/> yes <input checked="" type="checkbox"/> no at what depths? _____
Was H <sub>2</sub> S encountered?	<input type="checkbox"/> yes <input checked="" type="checkbox"/> no at what depths? _____
Were unusual drilling circumstances encountered?	<input type="checkbox"/> yes <input checked="" type="checkbox"/> no
If yes, briefly explain below	

Other remarks:

*OCC - Operator used port collar at 3308' and using 150 sacks of cement, lifted cement to 2471'. (see original 1002C3)*

640 Acres


If more than three drainholes are proposed, attach a separate sheet indicating the necessary information.

Direction must be stated in degrees azimuth. Please note, the horizontal drainhole and its end point must be located within the boundaries of the lease or spacing unit.

Directional surveys are required for all drainholes and directional wells.

640 Acres


BOTTOM HOLE LOCATION FOR DIRECTIONAL HOLE

SEC	TWP	RGE	COUNTY
Spot Location			
1/4	1/4	1/4	1/4
Measured Total Depth		True Vertical Depth	BHL From Lease, Unit, or Property Line:

BOTTOM HOLE LOCATION FOR HORIZONTAL HOLE: (LATERALS)

LATERAL #1			
SEC	TWP	RGE	COUNTY
Spot Location			
1/4	1/4	1/4	1/4
Depth of Deviation		Radius of Turn	Direction
Measured Total Depth		True Vertical Depth	BHL From Lease, Unit, or Property Line:

LATERAL #2			
SEC	TWP	RGE	COUNTY
Spot Location			
1/4	1/4	1/4	1/4
Depth of Deviation		Radius of Turn	Direction
Measured Total Depth		True Vertical Depth	BHL From Lease, Unit, or Property Line:

LATERAL #3			
SEC	TWP	RGE	COUNTY
Spot Location			
1/4	1/4	1/4	1/4
Depth of Deviation		Radius of Turn	Direction
Measured Total Depth		True Vertical Depth	BHL From Lease, Unit, or Property Line: