

Oklahoma Corporation Commission  
Oil & Gas Conservation Division  
Post Office Box 52000  
Oklahoma City, Oklahoma 73152-2000  
Rule 165: 10-3-25

Form 1002A

API No.: 35051245470000

**Completion Report**

Spud Date: February 10, 2019

OTC Prod. Unit No.:

Drilling Finished Date: February 19, 2019

1st Prod Date:

Completion Date: February 25, 2019

**Drill Type: STRAIGHT HOLE**

**SERVICE WELL**

Well Name: LONGHORN SWD 1

Purchaser/Measurer:

Location: GRADY 20 9N 6W  
SW SE NE NE  
1095 FNL 2220 FWL of 1/4 SEC  
Derrick Elevation: 1324 Ground Elevation: 1307

First Sales Date:

Operator: COBALT ENVIRONMENTAL SOLUTIONS LLC 23434  
PO BOX 1266  
18825 HIGHWAY 32 W  
ARDMORE, OK 73402-1266

Completion Type	
	Single Zone
	Multiple Zone
	Commingled

Location Exception	
Order No	
There are no Location Exception records to display.	

Increased Density	
Order No	
There are no Increased Density records to display.	

Casing and Cement							
Type	Size	Weight	Grade	Feet	PSI	SAX	Top of CMT
SURFACE	9 5/8			468		200	SURFACE
PRODUCTION	7			6461		430	3450

Liner								
Type	Size	Weight	Grade	Length	PSI	SAX	Top Depth	Bottom Depth
There are no Liner records to display.								

**Total Depth: 6500**

Packer	
Depth	Brand & Type
3737	AS-1X

Plug	
Depth	Plug Type
There are no Plug records to display.	

Initial Test Data
-------------------

Test Date	Formation	Oil BBL/Day	Oil-Gravity (API)	Gas MCF/Day	Gas-Oil Ratio Cu FT/BBL	Water BBL/Day	Pumpin or Flowing	Initial Shut- In Pressure	Choke Size	Flow Tubing Pressure
There are no Initial Data records to display.										
<b>Completion and Test Data by Producing Formation</b>										
Formation Name: WOLFCAMPIAN			Code: 451WFMP			Class: COMM DISP				
<b>Spacing Orders</b>			<b>Perforated Intervals</b>							
<b>Order No</b>		<b>Unit Size</b>	<b>From</b>				<b>To</b>			
There are no Spacing Order records to display.			3760				3772			
			3834				3846			
			3872				3896			
			4110				4132			
			4172				4184			
			4192				4210			
			4244				4258			
			4300				4312			
			4358				4370			
			4391				4411			
			4472				4496			
			4588				4616			
			4660				4674			
<b>Acid Volumes</b>			<b>Fracture Treatments</b>							
4,500 GALLONS ALL PERFORATIONS AND ALL ZONES			NONE							

Formation Name: WABAUNSEE

Code: 406WBNS

Class: COMM DISP

**Spacing Orders****Order No****Unit Size**

There are no Spacing Order records to display.

**Perforated Intervals****From****To**

4864

4872

4884

4900

5212

5228

5230

5256

5316

5326

5510

5524

5552

5564

5566

5578

5726

5750

5864

5880

**Acid Volumes**

ACIDIZED WITH WOLFCAMPIAN AND SHAWNEE

**Fracture Treatments**

NONE

Formation Name: SHAWNEE

Code: 406SHWN

Class: COMM DISP

**Spacing Orders****Order No****Unit Size**

There are no Spacing Order records to display.

**Perforated Intervals****From****To**

5864

5880

5944

5964

5968

5984

6238

6246

6338

6352

**Acid Volumes**

ACIDIZED WITH WOLFCAMPIAN AND WABAUNSEE

**Fracture Treatments**

NONE

Formation	Top
WOLFCAMPIAN	2834
PENNSYLVANIAN (TOP)	4674
CAMPBELL SANDS	4860
CREWS SANDS	5210
GRIFFIN SANDS	5510
HOOVER SANDS	5862
ELGIN SANDS	6182

Were open hole logs run? Yes

Date last log run: February 19, 2019

Were unusual drilling circumstances encountered? No

Explanation:

**Other Remarks**

OCC - UIC PERMIT NUMBER 1902510026

**FOR COMMISSION USE ONLY**

1142624

Status: Accepted

API NO. 051-24547  
OTC PROD.  
UNIT NO.

(PLEASE TYPE OR USE BLACK INK ONLY)

OKLAHOMA CORPORATION COMMISSION

Oil & Gas Conservation Division

Post Office Box 52000

Oklahoma City, Oklahoma 73152-2000

Rule 165:10-3-25

RECEIVED

APR 16 2019

OKLAHOMA CORPORATION  
COMMISSION

Form 1002A

Rev. 2009

☒ ORIGINAL  
☐ AMENDED (Reason)

COMPLETION REPORT

TYPE OF DRILLING OPERATION

☒ STRAIGHT HOLE ☐ DIRECTIONAL HOLE ☐ HORIZONTAL HOLE  
☒ SERVICE WELL

If directional or horizontal, see reverse for bottom hole location.

COUNTY Grady SEC 20 TWP 9N RGE 6W  
LEASE NAME Longhorn SWD  
SW 1/4 SE 1/4 NE 1/4 NE 1/4 Est. OF 1/4 SEC 1095 FWL OF 1/4 SEC 2220  
ELEVATION 1324 Ground 1307 Latitude (if known) Longitude (if known)  
OPERATOR NAME Cobalt Environmental Solutions, LLC OTC / OCC OPERATOR NO. 23434  
ADDRESS P O Box 1266  
CITY Ardmore STATE TX ZIP 73402-1266

SPUD DATE 2/10/2019  
DRLG FINISHED DATE 2/19/2019  
DATE OF WELL COMPLETION 2/25/2019  
1st PROD DATE  
RECOMP DATE

640 Acres  
W E  
LOCATE WELL

COMPLETION TYPE

☐ SINGLE ZONE  
☐ MULTIPLE ZONE  
Application Date  
☐ COMMINGLED  
Application Date  
LOCATION EXCEPTION ORDER NO.  
INCREASED DENSITY ORDER NO.

CASING & CEMENT (Attach Form 1002C)

TYPE	SIZE	WEIGHT	GRADE	FEET	PSI	SAX	TOP OF CMT
CONDUCTOR							
SURFACE	9 5/8			468		200 250	Surface
INTERMEDIATE							
PRODUCTION	7			6461		430	3450
LINER							
				TOTAL DEPTH	6,500		

PACKER @ 3,737 BRAND & TYPE AS-1X PLUG @ TYPE PLUG @ TYPE  
PACKER @ BRAND & TYPE PLUG @ TYPE PLUG @ TYPE

COMPLETION & TEST DATA BY PRODUCING FORMATION

FORMATION	Wolfcampian	Wolfcampian	Wabaunsee	Wabaunsee	Shawnee	
SPACING & SPACING ORDER NUMBER	1902510026	1902510026	1902510026	1902510026	1902510026	see remarks
CLASS: Oil, Gas, Dry, Inj, Disp, Comm Disp, Svc	Comm Disp	Comm Disp	Comm Disp	Comm Disp	Comm Disp	
PERFORATED INTERVALS	3760-3772, 3834-3846, 3872-3896, 4110-4132, 4172-4184, 4192-4210, 4244-4258, 4300-4312, 4358-4370, 4391-4411, 4472-4496, 4588-4616	4660-4674	4864-4872, 4884-4900, 5212-5228, 5230-5256, 5316-5326, 5510-5524	5552-5564, 5566-5578, 5726-5750, 5864-5880	5864-5880, 5944-5964, 5968-5984, 6238 6246, 6338-6352	
ACID/VOLUME	4500 gals					
FRACTURE TREATMENT (Fluids/Prop Amounts)	None		None		None	

Min Gas Allowable (165:10-17-7)

Gas Purchaser/Measurer

First Sales Date

INITIAL TEST DATA

Oil Allowable (165:10-13-3)

INITIAL TEST DATE						
OIL-BBL/DAY						
OIL-GRAVITY ( API)						
GAS-MCF/DAY						
GAS-OIL RATIO CU FT/BBL						
WATER-BBL/DAY						
PUMPING OR FLOWING						
INITIAL SHUT-IN PRESSURE						
CHOKE SIZE						
FLOW TUBING PRESSURE						

AS SUBMITTED

A record of the formations drilled through, and pertinent remarks are presented on the reverse. I declare that I have knowledge of the contents of this report and am authorized by my organization to make this report, which was prepared by me or under my supervision and direction, with the data and facts stated herein to be true, correct, and complete to the best of my knowledge and belief

SIGNATURE Michael W Schmidt, Agent 4/10/2019 405-919-0555  
11609 Randwick Dr Oklahoma City OK 73162 regulatoryolutions@cox.net  
ADDRESS CITY STATE ZIP EMAIL ADDRESS

## PLEASE TYPE OR USE BLACK INK ONLY

## FORMATION RECORD

Give formation names and tops, if available, or descriptions and thickness of formations drilled through. Show intervals cored or drillstem tested

NAMES OF FORMATIONS	TOP
Wolfcampian	2,834
Pennsylvanian (Top)	4,674
Campbell Sands	4,860
Crews Sands	5,210
Griffin Sands	5,510
Hoover Sands	5,862
Elgin Sands	6,182

LEASE NAME Longhorn SWDWELL NO. 1

## FOR COMMISSION USE ONLY

ITD on file ☐ YES ☐ NO

APPROVED \_\_\_\_\_ DISAPPROVED \_\_\_\_\_

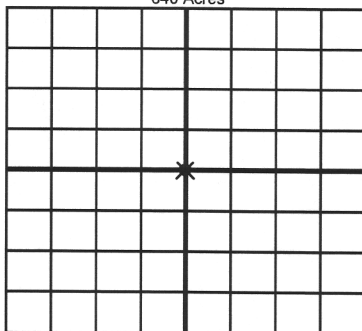
2) Reject Codes

Were open hole logs run? ☒ yes ☐ noDate Last log was run 2/19/2019Was CO<sub>2</sub> encountered? ☐ yes ☒ no at what depths? \_\_\_\_\_Was H<sub>2</sub>S encountered? ☐ yes ☒ no at what depths? \_\_\_\_\_Were unusual drilling circumstances encountered? ☐ yes ☒ no  
If yes, briefly explain below

Other remarks:

OCC - UIC permit 1902510026

640 Acres

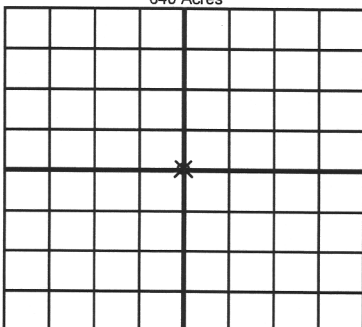


If more than three drainholes are proposed, attach a separate sheet indicating the necessary information.

Direction must be stated in degrees azimuth. Please note, the horizontal drainhole and its end point must be located within the boundaries of the lease or spacing unit.

Directional surveys are required for all drainholes and directional wells.

640 Acres



## BOTTOM HOLE LOCATION FOR DIRECTIONAL HOLE

SEC	TWP	RGE	COUNTY
Spot Location			
1/4	1/4	1/4	1/4
Measured Total Depth		True Vertical Depth	BHL From Lease, Unit, or Property Line:

## BOTTOM HOLE LOCATION FOR HORIZONTAL HOLE: (LATERALS)

## LATERAL #1

SEC	TWP	RGE	COUNTY
Spot Location			
1/4	1/4	1/4	1/4
Depth of Deviation		Radius of Turn	Direction
Measured Total Depth		True Vertical Depth	BHL From Lease, Unit, or Property Line:

## LATERAL #2

SEC	TWP	RGE	COUNTY
Spot Location			
1/4	1/4	1/4	1/4
Depth of Deviation		Radius of Turn	Direction
Measured Total Depth		True Vertical Depth	BHL From Lease, Unit, or Property Line:

## LATERAL #3

SEC	TWP	RGE	COUNTY
Spot Location			
1/4	1/4	1/4	1/4
Depth of Deviation		Radius of Turn	Direction
Measured Total Depth		True Vertical Depth	BHL From Lease, Unit, or Property Line:

API NO. 051-24547  
OTC PROD.  
UNIT NO.

(PLEASE TYPE OR USE BLACK INK ONLY)

OKLAHOMA CORPORATION COMMISSION

Oil & Gas Conservation Division

Post Office Box 52000

Oklahoma City, Oklahoma 73152-2000

Rule 165:10-3-25

RECEIVED

JUN 07 2019

Oklahoma Corporation  
Commission

Form 1002A

Rev. 2009

☐ ORIGINAL  
☒ AMENDED (Reason)

Corrected Spot Location, added  
amount of acid used

COMPLETION REPORT

TYPE OF DRILLING OPERATION  
☒ STRAIGHT HOLE ☐ DIRECTIONAL HOLE ☐ HORIZONTAL HOLE  
☐ SERVICE WELL

If directional or horizontal, see reverse for bottom hole location.

SPUD DATE 2/10/2019  
DRLG FINISHED DATE 2/19/2019  
DATE OF WELL COMPLETION 2/25/2019  
1st PROD DATE  
RECOMP DATE  
WELL NO. 1  
FWL OF 1/4 SEC 2220  
Latitude (if known)  
Longitude (if known)  
OTC / OCC OPERATOR NO. 23434

COUNTY Grady SEC 20 TWP 9N RGE 6W  
LEASE NAME Longhorn SWD  
SW 1/4 SE 1/4 NE 1/4 NE 1/4 FNL OF 1/4 SEC 1095  
ELEVATION Derrick FL 1324 Ground 1307  
OPERATOR NAME Cobalt Environmental Solutions, LLC  
ADDRESS P O Box 1266  
CITY Ardmore STATE TX ZIP 73402-1266

640 Acres  
W E  
LOCATE WELL

COMPLETION TYPE

☐ SINGLE ZONE  
☐ MULTIPLE ZONE  
Application Date  
☐ COMMINGLED  
Application Date  
LOCATION EXCEPTION  
ORDER NO.  
INCREASED DENSITY  
ORDER NO.

CASING & CEMENT (Attach Form 1002C)

TYPE	SIZE	WEIGHT	GRADE	FEET	PSI	SAX	TOP OF CMT
CONDUCTOR							
SURFACE	9 5/8			468		250	Surface
INTERMEDIATE							
PRODUCTION	7			6461		430	3450
LINER							

PACKER @ 3,373 BRAND & TYPE AS-1X PLUG @ TYPE PLUG @ TYPE TOTAL DEPTH 6,500  
PACKER @ BRAND & TYPE PLUG @ TYPE PLUG @ TYPE

COMPLETION & TEST DATA BY PRODUCING FORMATION

FORMATION	Wolfcampian	Wolfcampian	Wabaunsee	Wabaunsee	Shawnee
SPACING & SPACING	1902510026	1902510026	1902510026	1902510026	1902510026
ORDER NUMBER					
CLASS: Oil, Gas, Dry, Inj, Disp, Comm Disp, Svc	Comm Disp	Comm Disp	Comm Disp	Comm Disp	Comm Disp
PERFORATED INTERVALS	3760-3772, 3834-3846, 3872-3896, 4172-4184, 4192-4210, 4244-4258, 4358-4370, 4391-4411, 4472-4496, 4588-4616	4660-4674	4864-4872, 4884-4900, 5212-5228, 5230-5256, 5316-5326, 5510-5524	5552-5564, 5566-5578, 5726-5750, 5864-5880	5864-5880, 5944-5964, 5968-5984, 6238 6246, 6338-6352
ACID/VOLUME	4,500 gals all perforations				
FRACTURE TREATMENT (Fluids/Prop Amounts)					

Min Gas Allowable (165:10-17-7)

Gas Purchaser/Measurer

☐

OR

First Sales Date

Oil Allowable (165:10-13-3)

INITIAL TEST DATA

INITIAL TEST DATE					
OIL-BBL/DAY					
OIL-GRAVITY ( API)					
GAS-MCF/DAY					
GAS-OIL RATIO CU FT/BBL					
WATER-BBL/DAY					
PUMPING OR FLOWING					
INITIAL SHUT-IN PRESSURE					
CHOKE SIZE					
FLOW TUBING PRESSURE					

AS SUBMITTED

A record of the formations drilled through, and pertinent remarks are presented on the reverse. I declare that I have knowledge of the contents of this report and am authorized by my organization to make this report, which was prepared by me or under my supervision and direction, with the data and facts stated herein to be true, correct, and complete to the best of my knowledge and belief.

SIGNATURE Michael W Schmidt, Agent 6/7/2019 405-919-0555  
NAME (PRINT OR TYPE) DATE PHONE NUMBER  
11609 Randwick Dr Oklahoma City OK 73162 regulatoryolutions@cox.net  
ADDRESS CITY STATE ZIP EMAIL ADDRESS

PLEASE TYPE OR USE BLACK INK ONLY  
FORMATION RECORD

Give formation names and tops, if available, or descriptions and thickness of formations drilled through. Show intervals cored or drillstem tested.

NAMES OF FORMATIONS	TOP
Wolfcampian	2,834
Pennsylvanian (Top)	4,674
Campbell Sands	4,860
Crews Sands	5,210
Griffin Sands	5,510
Hoover Sands	5,862
Elgin Sands	6,182

LEASE NAME Longhorn SWD WELL NO. 1

FOR COMMISSION USE ONLY		
ITD on file	<input type="checkbox"/> YES	<input type="checkbox"/> NO
APPROVED	DISAPPROVED	2) Reject Codes
<div></div> <div></div> <div></div> <div></div> <div></div>		

Were open hole logs run?	<u>X</u> yes	no
Date Last log was run	<u>2/19/2019</u>	
Was CO <sub>2</sub> encountered?	yes	<u>X</u> no at what depths? <u></u>
Was H <sub>2</sub> S encountered?	yes	<u>X</u> no at what depths? <u></u>
Were unusual drilling circumstances encountered?	yes	<u>X</u> no
If yes, briefly explain below		

Other remarks:

640 Acres


If more than three drainholes are proposed, attach a separate sheet indicating the necessary information.

Direction must be stated in degrees azimuth.  
Please note, the horizontal drainhole and its end point must be located within the boundaries of the lease or spacing unit.

Directional surveys are required for all drainholes and directional wells.

640 Acres


BOTTOM HOLE LOCATION FOR DIRECTIONAL HOLE

SEC	TWP	RGE	COUNTY		
Spot Location			Feet From 1/4 Sec Lines	FSL	FWL
1/4	1/4	1/4	1/4		
Measured Total Depth		True Vertical Depth	BHL From Lease, Unit, or Property Line:		

BOTTOM HOLE LOCATION FOR HORIZONTAL HOLE: (LATERALS)

LATERAL #1					
SEC	TWP	RGE	COUNTY		
Spot Location			Feet From 1/4 Sec Lines	FSL	FWL
1/4	1/4	1/4	1/4		
Depth of Deviation		Radius of Turn	Direction	Total Length	
Measured Total Depth		True Vertical Depth	BHL From Lease, Unit, or Property Line:		

LATERAL #2					
SEC	TWP	RGE	COUNTY		
Spot Location			Feet From 1/4 Sec Lines	FSL	FWL
1/4	1/4	1/4	1/4		
Depth of Deviation		Radius of Turn	Direction	Total Length	
Measured Total Depth		True Vertical Depth	BHL From Lease, Unit, or Property Line:		

LATERAL #3					
SEC	TWP	RGE	COUNTY		
Spot Location			Feet From 1/4 Sec Lines	FSL	FWL
1/4	1/4	1/4	1/4		
Depth of Deviation		Radius of Turn	Direction	Total Length	
Measured Total Depth		True Vertical Depth	BHL From Lease, Unit, or Property Line:		