

Oklahoma Corporation Commission
Oil & Gas Conservation Division
Post Office Box 52000
Oklahoma City, Oklahoma 73152-2000
Rule 165: 10-3-25

Form 1002A

API No.: 35003233110000

Completion Report

Spud Date: April 18, 2018

OTC Prod. Unit No.: 003-223739

Drilling Finished Date: May 12, 2018

1st Prod Date: June 24, 2018

Completion Date: June 21, 2018

Drill Type: HORIZONTAL HOLE

Min Gas Allowable: Yes

Well Name: LOIS 2512 36-25XH 1

Purchaser/Measurer: SEMGAS AND SHELL
TRADING

First Sales Date: 06/26/2018

Location: ALFALFA 1 24N 12W
NE NW NW NW
171 FNL 610 FWL of 1/4 SEC
Latitude: 36.593578356 Longitude: -98.441966346
Derrick Elevation: 1375 Ground Elevation: 1357

Operator: AMPLIFY OKLAHOMA OPERATING LLC 23079

500 DALLAS ST STE 1700
HOUSTON, TX 77002-4800

Completion Type		Location Exception		Increased Density	
X	Single Zone	Order No		Order No	
	Multiple Zone	690371		201802966-	
	Commingled				

Casing and Cement							
Type	Size	Weight	Grade	Feet	PSI	SAX	Top of CMT
SURFACE	13 3/8	48	J-55	363		315	SURFACE
INTERMEDIATE	9 5/8	36	J-55	1253		565	SURFACE
INTERMEDIATE	7	26	P-110	6858		465	4195
PRODUCTION	4.5	11.6	P-110	16541		1000	10011

Liner								
Type	Size	Weight	Grade	Length	PSI	SAX	Top Depth	Bottom Depth
There are no Liner records to display.								

Total Depth: 16541

Packer	
Depth	Brand & Type
There are no Packer records to display.	

Plug	
Depth	Plug Type
There are no Plug records to display.	

Initial Test Data

Test Date	Formation	Oil BBL/Day	Oil-Gravity (API)	Gas MCF/Day	Gas-Oil Ratio Cu FT/BBL	Water BBL/Day	Pumpin or Flowing	Initial Shut-In Pressure	Choke Size	Flow Tubing Pressure
Jun 27, 2018	MISSISSIPPIAN	229	37	1975	8624	6482	PUMPING	99	64/64	649

Completion and Test Data by Producing Formation

Formation Name: MISSISSIPPIAN

Code: 359MSSP

Class: OIL

Spacing Orders

Order No	Unit Size
601248	640
690730	MULTI UNIT
679341	640

Perforated Intervals

From	To
6893	16444

Acid Volumes

2,686 BARRELS 15% GELLED AND RET ACID, 1,478 BARRELS 15% HCL
--

Fracture Treatments

127,642 BARRELS SLICK WATER

Formation	Top
ENDICOTT	4610
HASKELL	4951
TONKAWA	4999
AVANT	5324
COTTAGE GROVE	5409
HOGSHOOTER	5505
BIG LIME	5732
OSWEGO	5792
CHEROKEE	5892
MISSISSIPPI	6147

Were open hole logs run? No

Date last log run:

Were unusual drilling circumstances encountered? No

Explanation:

Other Remarks

BHL FROM PROPOSED PLAT

Lateral Holes

Sec: 25 TWP: 25N RGE: 12W County: ALFALFA

N2 N2 N2 NW

165 FNL 1320 FWL of 1/4 SEC

Depth of Deviation: 5572 Radius of Turn: 831 Direction: 360 Total Length: 9664

Measured Total Depth: 16541 True Vertical Depth: 6109 End Pt. Location From Release, Unit or Property Line: 165

FOR COMMISSION USE ONLY

1140407

RECEIVED

Form 1002A
Rev. 2009

JUL 16 2018

OKLAHOMA CORPORATION COMMISSION

API NO. 003 23311
OTC PROD. UNIT NO. 003 223739

PLEASE TYPE OR USE BLACK INK ONLY
NOTE:

Attach copy of original 1002A
if recompletion or reentry.

OKLAHOMA CORPORATION COMMISSION
Oil & Gas Conservation Division
Post Office Box 52000
Oklahoma City, Oklahoma 73152-2000
Rule 165:10-3-25

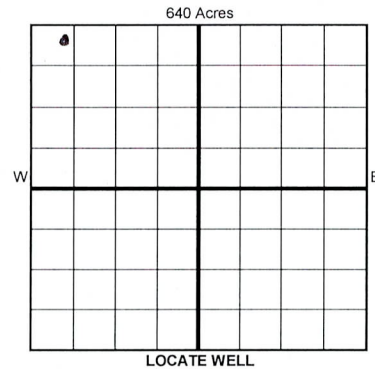
☒ ORIGINAL
☐ AMENDED (Reason)

COMPLETION REPORT

TYPE OF DRILLING OPERATION
☐ STRAIGHT HOLE ☐ DIRECTIONAL HOLE ☒ HORIZONTAL HOLE
If directional or horizontal, see reverse for bottom hole location.

SPUD DATE 04/18/2018
DRLG FINISHED DATE 05/12/2018
DATE OF WELL COMPLETION 06/21/2018
1st PROD DATE 06/24/2018
RECOMP DATE
Longitude (if known) -98.441966346
OTC/OCC OPERATOR NO. 23079

COUNTY Alfalfa SEC 01 TWP 24N RGE 12W
LEASE NAME Lois 2512
NE 1/4 NW 1/4 NW 1/4 NW 1/4 OF 1/4 SEC 171N
ELEVATION N Derrick Ground 1357
Latitude (if known) 36.593578356
OPERATOR NAME Midstates Petroleum Company LLC
ADDRESS 321 South Boston, Suite 1000
CITY Tulsa STATE OK ZIP 74103



COMPLETION TYPE

☒ SINGLE ZONE
☐ MULTIPLE ZONE
Application Date
☐ COMMINGLED
Application Date
LOCATION
EXCEPTION ORDER 677541 681354 E.O.
INCREASED DENSITY ORDER NO. 201802966-T 681935 E.O.

CASING & CEMENT (Form 1002C must be attached)

TYPE	SIZE	WEIGHT	GRADE	FEET	PSI	SAX	TOP OF CMT
CONDUCTOR							
SURFACE	13-3/8	48#	J-55	363'		315	surface
INTERMEDIATE	9-5/8	36#	J-55	1,253'	565	545	surface
PRODUCTION	7	26#	P-110	6,858'		465	2,663
LINER	4.5	11.6#	P-110	6,530'	16,541'	1,000	6,536'
						TOTAL DEPTH	16,541'

PACKER @ BRAND & TYPE PLUG @ TYPE PLUG @ TYPE
PACKER @ BRAND & TYPE PLUG @ TYPE PLUG @ TYPE

COMPLETION & TEST DATA BY PRODUCING FORMATION 359MSSP

FORMATION	Mississippian					Reported to Free Flow
SPACING & SPACING ORDER NUMBER	640/601248 6679341	681353 E.O. Multiunit				
CLASS: Oil, Gas, Dry, Inj, Disp, Comm Disp, Svc	Oil					
PERFORATED INTERVALS	6,893'-16,444'					
ACID/VOLUME	2686 bbls 15% gelled & ret acid	1478 bbls 15% HCl				
FRACTURE TREATMENT (Fluids/Prop Amounts)	127642 bbls slk wtr					

Min Gas Allowable (165:10-17-7)

Gas Purchaser/Measurer

SemGas & Shell Trading

☒ x

OR

First Sales Date

06/26/2018

INITIAL TEST DATA

INITIAL TEST DATE	06/27/2018					
OIL-BBL/DAY	229					
OIL-GRAVITY (API)	37					
GAS-MCF/DAY	1,975					
GAS-OIL RATIO CU FT/BBL	8,624					
WATER-BBL/DAY	6,482					
PUMPING OR FLOWING	Pumping					
INITIAL SHUT-IN PRESSURE	99					
CHOKE SIZE	64/64					
FLOW TUBING PRESSURE	649					

A record of the formations drilled through, and pertinent remarks are presented on the reverse. I declare that I have knowledge of the contents of this report and am authorized by my organization to make this report, which was prepared by me or under my supervision and direction, with the data and facts stated herein to be true, correct, and complete to the best of my knowledge and belief.

SIGNATURE Chelce Rouse DATE 06/21/2018 PHONE NUMBER 918-947-4647
321 South Boston, Suite 1000 Tulsa, OK 74103
ADDRESS CITY STATE ZIP EMAIL ADDRESS chelce.rouse@midstatespetroleum.com

PLEASE TYPE OR USE BLACK INK ONLY

FORMATION RECORD

Give formation names and tops, if available, or descriptions and thickness of formations drilled through. Show intervals cored or drillstem tested.

LEASE NAME Lois 2512

WELL NO. 36-25XH 1

NAMES OF FORMATIONS	TOP
ENDICOTT	4,610
HASKELL	4,951
TONKAWA	4,999
AVANT	5,324
COTTAGE GROVE	5,409
HOGSHOOTER	5,505
BIG LIME	5,732
OSWEGO	5,792
CHEROKEE	5,892
MISSISSIPPI	6,147

FOR COMMISSION USE ONLY

ITD on file ☐ YES ☐ NO

APPROVED _____ DISAPPROVED _____

2) Reject Codes _____

Were open hole logs run? ☐ yes ☒ no

Date Last log was run N/A

Was CO₂ encountered? ☐ yes ☒ no at what depths? _____

Was H₂S encountered? ☐ yes ☒ no at what depths? _____

Were unusual drilling circumstances encountered? ☐ yes ☒ no

If yes, briefly explain below _____

Other remarks:

640 Acres

If more than three drainholes are proposed, attach a separate sheet indicating the necessary information.

Direction must be stated in degrees azimuth.
Please note, the horizontal drainhole and its end point must be located within the boundaries of the lease or spacing unit.

Directional surveys are required for all drainholes and directional wells.

640 Acres

BOTTOM HOLE LOCATION FOR DIRECTIONAL HOLE

SEC	TWP	RGE	COUNTY
Spot Location	1/4	1/4	1/4
Measured Total Depth	True Vertical Depth	BHL From Lease, Unit, or Property Line:	

BOTTOM HOLE LOCATION FOR HORIZONTAL HOLE: (LATERALS)

LATERAL #1

SEC	TWP	RGE	COUNTY
25	25N	12W	Alfalfa
Spot Location	1/4	1/4	1/4
Depth of Deviation	6,877	Radius of Turn	974'
Measured Total Depth	16,541'	True Vertical Depth	6,109'
Direction		BHL From Lease, Unit, or Property Line:	

LATERAL #2

SEC	TWP	RGE	COUNTY
Spot Location	1/4	1/4	1/4
Depth of Deviation	Radius of Turn	Direction	Total Length
Measured Total Depth	True Vertical Depth	BHL From Lease, Unit, or Property Line:	

LATERAL #3

SEC	TWP	RGE	COUNTY
Spot Location	1/4	1/4	1/4
Depth of Deviation	Radius of Turn	Direction	Total Length
Measured Total Depth	True Vertical Depth	BHL From Lease, Unit, or Property Line:	