

Oklahoma Corporation Commission
Oil & Gas Conservation Division
Post Office Box 52000
Oklahoma City, Oklahoma 73152-2000
Rule 165: 10-3-25

Form 1002A

API No.: 35019263030000

Completion Report

Spud Date: November 10, 2018

OTC Prod. Unit No.:

Drilling Finished Date: November 17, 2018

1st Prod Date: August 26, 2019

Completion Date: August 22, 2019

Drill Type: STRAIGHT HOLE

Min Gas Allowable: Yes

Well Name: HEWITT UNIT 27-0405

Purchaser/Measurer: DCP

Location: CARTER 27 4S 2W
SW NW NW NE
431 FNL 10 FWL of 1/4 SEC
Latitude: 34.186048 Longitude: -97.395564
Derrick Elevation: 913 Ground Elevation: 898

First Sales Date: 08/23/2019

Operator: XTO ENERGY INC 21003

22777 SPRINGWOODS VILLAGE PKWY
SPRING, TX 77389-1425

Completion Type	
X	Single Zone
	Multiple Zone
	Commingled

Location Exception
Order No
N/A

Increased Density
Order No
N/A

Casing and Cement							
Type	Size	Weight	Grade	Feet	PSI	SAX	Top of CMT
CONDUCTOR	16	109	K-55	75			
SURFACE	8 5/8	24	J-55	644		250	SURFACE
PRODUCTION	5 1/2	15.5	K-55	4138		550	SURFACE

Liner								
Type	Size	Weight	Grade	Length	PSI	SAX	Top Depth	Bottom Depth
There are no Liner records to display.								

Total Depth: 4195

Packer	
Depth	Brand & Type
There are no Packer records to display.	

Plug	
Depth	Plug Type
There are no Plug records to display.	

Initial Test Data

Test Date	Formation	Oil BBL/Day	Oil-Gravity (API)	Gas MCF/Day	Gas-Oil Ratio Cu FT/BBL	Water BBL/Day	Pumpin or Flowing	Initial Shut-In Pressure	Choke Size	Flow Tubing Pressure
Aug 28, 2019	HEWITT	117	35	30	256	375	PUMPING			

Completion and Test Data by Producing Formation

Formation Name: HEWITT

Code: 405HWTT

Class: OIL

Spacing Orders

Order No	Unit Size
67990	UNIT

Perforated Intervals

From	To
1840	3944

Acid Volumes

15,900 GALLONS 15%

Fracture Treatments

199,000 GALLONS X-LINK GEL, 163,000 POUNDS 12/20, 79,000 POUNDS 16/30, 22,000 POUNDS 20/40
--

Formation	Top
HOXBAR	1370
DEESE	3299

Were open hole logs run? Yes
Date last log run: November 16, 2018

Were unusual drilling circumstances encountered? No
Explanation:

Other Remarks
IRREGULAR SECTION

FOR COMMISSION USE ONLY

Status: Accepted

1143811

API NO. 019-26303
OTC PROD.
UNIT NO.

(PLEASE TYPE OR USE BLACK INK ONLY)

OKLAHOMA CORPORATION COMMISSION
Oil & Gas Conservation Division
Post Office Box 52000
Oklahoma City, Oklahoma 73152-2000
Rule 165:10-3-25

RECEIVED
SEP 10 2019

Form 1002A
Rev. 2009

☒ ORIGINAL
☐ AMENDED (Reason)

COMPLETION REPORT

TYPE OF DRILLING OPERATION

☒ STRAIGHT HOLE ☐ DIRECTIONAL HOLE ☐ HORIZONTAL HOLE
☐ SERVICE WELL

If directional or horizontal, see reverse for bottom hole location.

COUNTY Carter SEC 27 TWP 4S RGE 2W
LEASE NAME Hewitt Unit WELL NO. 27-0405
SW 1/4 NW 1/4 NE 1/4 FNL OF 1/4 SEC 431 FWL OF 1/4 SEC 10
ELEVATION 913 Ground 898 Latitude (if known) 34.186048 Longitude (if known) -97.395564
OPERATOR XTO Energy Inc. OTC / OCC OPERATOR NO. 21003
ADDRESS 210 Park Avenue, Suite 2350
CITY Oklahoma City STATE Oklahoma ZIP 73102

SPUD DATE 11/10/18
DRLG FINISHED DATE 11/17/18
DATE OF WELL COMPLETION 8/22/2019
DATE OF WELL COMPLETION 8/26/2019
RECOMP DATE

640 Acres
W E
LOCATE WELL

COMPLETION TYPE

☒ SINGLE ZONE
☐ MULTIPLE ZONE
Application Date
COMINGLED
Application Date
LOCATION EXCEPTION ORDER NO. N/A
INCREASED DENSITY ORDER NO. N/A

CASING & CEMENT (Attach Form 1002C)

TYPE	SIZE	WEIGHT	GRADE	FEET	PSI	SAX	TOP OF CMT
CONDUCTOR	16"	109	K-55	75			
SURFACE	8 5/8"	24	J-55	622 644		250	Surface
INTERMEDIATE							
PRODUCTION	5 1/2"	15.5	K-55	4154 4130		550	Surface
LINER							
						TOTAL DEPTH	4,195

Per 1002C

PACKER @ BRAND & TYPE PLUG @ TYPE PLUG @ TYPE
PACKER @ BRAND & TYPE PLUG @ TYPE PLUG @ TYPE

COMPLETION & TEST DATA BY PRODUCING FORMATION

405 HWTT

FORMATION	Hewitt Sands						
SPACING & SPACING ORDER NUMBER	67990 (Unit)						
CLASS: Oil, Gas, Dry, Inj, Disp, Comm Disp, Svc	Oil						
PERFORATED INTERVALS	1840-3944						
ACID/VOLUME	15,900 gals 15%						
FRACTURE TREATMENT (Fluids/Prop Amounts)	199,000 gals x-link gel						
	163,000# 12/20						
	79,000# 16/30	22,000# 20/40					

Reported to Frac Focus

☒ Min Gas Allowable (165:10-17-7) Gas Purchaser/Measurer DCP
OR
☐ Oil Allowable (165:10-13-3) First Sales Date 8/23/2019

INITIAL TEST DATA

INITIAL TEST DATE	8/28/2019					
OIL-BBL/DAY	117 BOPD					
OIL-GRAVITY (API)	35 API					
GAS-MCF/DAY	30 MCFD					
GAS-OIL RATIO CU FT/BBL	256 SCF/BBL					
WATER-BBL/DAY	375 BWPD					
PUMPING OR FLOWING	Pumping					
INITIAL SHUT-IN PRESSURE	N/A					
CHOKE SIZE	N/A					
FLOW TUBING PRESSURE	N/A					

AS SUBMITTED

A record of the formations drilled through, and pertinent remarks are presented on the reverse. I declare that I have knowledge of the contents of this report and am authorized by my organization to make this report, which was prepared by me or under my supervision and direction, with the data and facts stated herein to be true, correct, and complete to the best of my knowledge and belief.

Signature: Debbie Waggoner
210 Park Avenue, Suite 2350
ADDRESS
Oklahoma City
CITY
Ok
STATE
73102
ZIP

DATE: 9/5/2019
PHONE NUMBER: 405-319-3243
EMAIL ADDRESS: debbie_waggoner@xtoenergy.com

PLEASE TYPE OR USE BLACK INK ONLY

FORMATION RECORD

Give formation names and tops, if available, or descriptions and thickness of formations drilled through. Show intervals cored or drillstem tested.

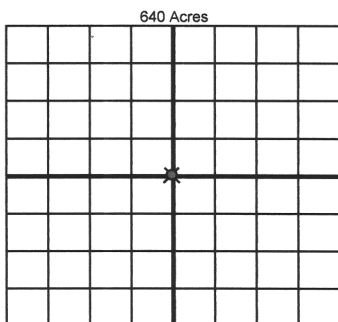
NAMES OF FORMATIONS	TOP
Hoxbar	1,370
Deese	3,299

LEASE NAME Hewitt Unit WELL NO. 27-0405

FOR COMMISSION USE ONLY	
ITD on file <input type="checkbox"/> YES <input type="checkbox"/> NO	
APPROVED _____	DISAPPROVED _____
2) Reject Codes	

Were open hole logs run?	<input checked="" type="checkbox"/> yes <input type="checkbox"/> no
Date Last log was run	<u>11/16/2018</u>
Was CO ₂ encountered?	<input type="checkbox"/> yes <input checked="" type="checkbox"/> no at what depths? _____
Was H ₂ S encountered?	<input type="checkbox"/> yes <input checked="" type="checkbox"/> no at what depths? _____
Were unusual drilling circumstances encountered?	<input type="checkbox"/> yes <input checked="" type="checkbox"/> no
If yes, briefly explain below	

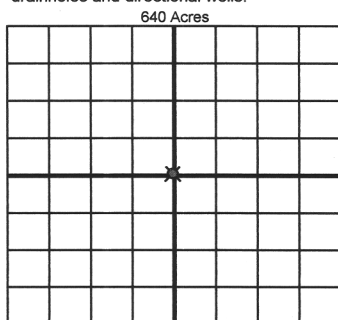
Other remarks: Irregular Section



If more than three drainholes are proposed, attach a separate sheet indicating the necessary information.

Direction must be stated in degrees azimuth. Please note, the horizontal drainhole and its end point must be located within the boundaries of the lease or spacing unit.

Directional surveys are required for all drainholes and directional wells.



BOTTOM HOLE LOCATION FOR DIRECTIONAL HOLE

SEC	TWP	RGE	COUNTY
Spot Location			
1/4	1/4	1/4	1/4
Measured Total Depth		True Vertical Depth	BHL From Lease, Unit, or Property Line:

BOTTOM HOLE LOCATION FOR HORIZONTAL HOLE: (LATERALS)

LATERAL #1

SEC	TWP	RGE	COUNTY
Spot Location			
1/4	1/4	1/4	1/4
Depth of Deviation		Radius of Turn	Direction
Measured Total Depth		True Vertical Depth	BHL From Lease, Unit, or Property Line:

LATERAL #2

SEC	TWP	RGE	COUNTY
Spot Location			
1/4	1/4	1/4	1/4
Depth of Deviation		Radius of Turn	Direction
Measured Total Depth		True Vertical Depth	BHL From Lease, Unit, or Property Line:

LATERAL #3

SEC	TWP	RGE	COUNTY
Spot Location			
1/4	1/4	1/4	1/4
Depth of Deviation		Radius of Turn	Direction
Measured Total Depth		True Vertical Depth	BHL From Lease, Unit, or Property Line: