

Oklahoma Corporation Commission  
Oil & Gas Conservation Division  
Post Office Box 52000  
Oklahoma City, Oklahoma 73152-2000  
Rule 165: 10-3-25

Form 1002A

API No.: 35137272680001

**Completion Report**

Spud Date: December 13, 2017

OTC Prod. Unit No.: 137-009009

Drilling Finished Date: December 16, 2017

1st Prod Date:

Completion Date: August 22, 2019

**Drill Type: STRAIGHT HOLE**

**SERVICE WELL**

Well Name: EMERSON 22

Purchaser/Measurer:

Location: STEPHENS 22 1S 5W  
NW NE SW SE  
1318 FSL 980 FWL of 1/4 SEC  
Derrick Elevation: 1024 Ground Elevation: 1020

First Sales Date:

Operator: PRUITT OPERATING COMPANY LLC 17710

304805 BRISCOE RD  
RATLIFF CITY, OK 73481-5802

Completion Type		Location Exception		Increased Density	
X	Single Zone	Order No		Order No	
	Multiple Zone	There are no Location Exception records to display.		There are no Increased Density records to display.	
	Commingled				

Casing and Cement							
Type	Size	Weight	Grade	Feet	PSI	SAX	Top of CMT
PRODUCTION	5.5	15.5	J-55	704		250	SURFACE

Liner								
Type	Size	Weight	Grade	Length	PSI	SAX	Top Depth	Bottom Depth
There are no Liner records to display.								

**Total Depth: 706**

Packer		Plug	
Depth	Brand & Type	Depth	Plug Type
567	PACKER	There are no Plug records to display.	

Initial Test Data										
Test Date	Formation	Oil BBL/Day	Oil-Gravity (API)	Gas MCF/Day	Gas-Oil Ratio Cu FT/BBL	Water BBL/Day	Pumpin or Flowing	Initial Shut-In Pressure	Choke Size	Flow Tubing Pressure
There are no Initial Data records to display.										

**Completion and Test Data by Producing Formation**

Formation Name: PERMIAN

Code: 459PRMN

Class: DISP

**Spacing Orders****Order No****Unit Size**

There are no Spacing Order records to display.

**Perforated Intervals****From****To**

598

606

**Acid Volumes**

There are no Acid Volume records to display.

**Fracture Treatments**

There are no Fracture Treatments records to display.

Formation	Top
PERMIAN	590

Were open hole logs run? No

Date last log run: August 22, 2019

Were unusual drilling circumstances encountered? No

Explanation:

**Other Remarks**

CEMENT BOND LOG RAN ON AUGUST 22, 2019. UIT PERMIT NUMBER 1806280004

**FOR COMMISSION USE ONLY**

1143913

Status: Accepted

API NO. 137-27268X  
OTC PROD. UNIT NO. 137-009009

(PLEASE TYPE OR USE BLACK INK ONLY)

OKLAHOMA CORPORATION COMMISSION

Oil & Gas Conservation Division

Post Office Box 52000

Oklahoma City, Oklahoma 73152-2000

Rule 165:10-3-25

RECEIVED

Form 1002A

Rev. 2009

SEP 19 2019

OKLAHOMA CORPORATION COMMISSION

☒ ORIGINAL  
☐ AMENDED (Reason)

TYPE OF DRILLING OPERATION

☒ STRAIGHT HOLE ☐ DIRECTIONAL HOLE ☐ HORIZONTAL HOLE  
☒ SERVICE WELL

If directional or horizontal, see reverse for bottom hole location.

COUNTY STEPHENS SEC 22 TWP 1S RGE 5W

LEASE NAME EMERSON WELL NO. 22

NW 1/4 NE 1/4 SW 1/4 SE 1/4 FSL OF 1/4 SEC 1318 FWL OF 1/4 SEC 980

ELEVATION 1024 Ground 1020 Latitude (if known)

OPERATOR NAME PRUITT OPERATING CO. LLC OTC / OCC OPERATOR NO. 17710

ADDRESS 304805 BRISCOE RD.

CITY RATLIFF CITY STATE OK ZIP 73481

COMPLETION REPORT

SPUD DATE 12/13/17

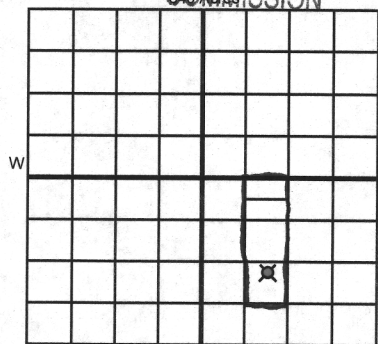
DRLG FINISHED DATE 12/16/17

DATE OF WELL COMPLETION 8/22/19

1st PROD DATE na

RECOMP DATE

Longitude (if known)



LOCATE WELL

COMPLETION TYPE

☒ SINGLE ZONE  
☐ MULTIPLE ZONE  
Application Date  
COMINGLED  
Application Date  
LOCATION EXCEPTION  
ORDER NO.  
INCREASED DENSITY  
ORDER NO.

CASING & CEMENT (Attach Form 1002C)

TYPE	SIZE	WEIGHT	GRADE	FEET	PSI	SAX	TOP OF CMT
CONDUCTOR							
SURFACE							
INTERMEDIATE							
PRODUCTION	5.5	15.5	J-55	704		250	SURFACE
LINER							
TOTAL DEPTH							706

Shows good Bond DKN

PACKER @ 567 BRAND & TYPE

PLUG @ TYPE PLUG @ TYPE

PACKER @ BRAND & TYPE

PLUG @ TYPE PLUG @ TYPE

COMPLETION & TEST DATA BY PRODUCING FORMATION

FORMATION	PERMIAN					
SPACING & SPACING						
ORDER NUMBER						
CLASS: Oil, Gas, Dry, Inj, Disp, Comm Disp, Svc	DISP.					
	598-606					
PERFORATED INTERVALS						
ACID/VOLUME						
FRACTURE TREATMENT (Fluids/Prop Amounts)						

Min Gas Allowable (165:10-17-7)

Gas Purchaser/Measurer

OR

First Sales Date

INITIAL TEST DATA

Oil Allowable (165:10-13-3)

INITIAL TEST DATE	NA					
OIL-BBL/DAY						
OIL-GRAVITY (API)						
GAS-MCF/DAY						
GAS-OIL RATIO CU FT/BBL						
WATER-BBL/DAY						
PUMPING OR FLOWING						
INITIAL SHUT-IN PRESSURE						
CHOKE SIZE						
FLOW TUBING PRESSURE						

AS SUBMITTED

A record of the formations drilled through, and pertinent remarks are presented on the reverse. I declare that I have knowledge of the contents of this report and am authorized by my organization to make this report, which was prepared by me or under my supervision and direction, with the data and facts stated herein to be true, correct, and complete to the best of my knowledge and belief.

Mickey L. Pruitt

SIGNATURE

Mickey L. Pruitt

NAME (PRINT OR TYPE)

9/5/19 580-856-2155

DATE PHONE NUMBER

304805 BRISCOE RD.

RATLIFF CITY OK 73481

MLCDLPRUITT@GMAIL.COM

ADDRESS

CITY

STATE

ZIP

EMAIL ADDRESS

PLEASE TYPE OR USE BLACK INK ONLY  
FORMATION RECORD

Give formation names and tops, if available, or descriptions and thickness of formations drilled through. Show intervals cored or drillstem tested.

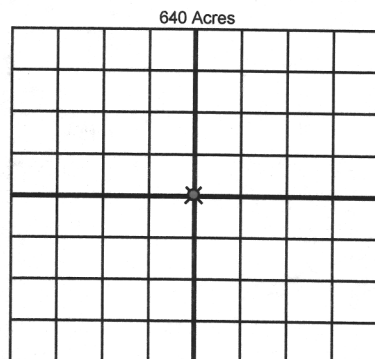
NAMES OF FORMATIONS	TOP
PERMIAN	590-650

LEASE NAME EMERSON WELL NO. 22

FOR COMMISSION USE ONLY	
ITD on file <input type="checkbox"/> YES <input type="checkbox"/> NO	
APPROVED _____	DISAPPROVED _____
2) Reject Codes	
_____	
_____	
_____	
_____	

Were open hole logs run?	yes	<input checked="" type="checkbox"/> no
Date Last log was run	8/22/2019	
Was CO <sub>2</sub> encountered?	yes	<input checked="" type="checkbox"/> no at what depths? _____
Was H <sub>2</sub> S encountered?	yes	<input checked="" type="checkbox"/> no at what depths? _____
Were unusual drilling circumstances encountered?	yes	<input checked="" type="checkbox"/> no
If yes, briefly explain below		

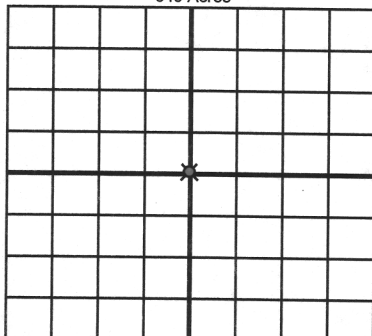
Other remarks: CBL RAN ON 8/22/2019 UTC Permit # 1806280004



If more than three drainholes are proposed, attach a separate sheet indicating the necessary information.

Direction must be stated in degrees azimuth. Please note, the horizontal drainhole and its end point must be located within the boundaries of the lease or spacing unit.

Directional surveys are required for all drainholes and directional wells.



BOTTOM HOLE LOCATION FOR DIRECTIONAL HOLE

SEC	TWP	RGE	COUNTY
Spot Location			
1/4	1/4	1/4	1/4
Measured Total Depth		True Vertical Depth	Feet From 1/4 Sec Lines FSL _____ FWL _____
BHL From Lease, Unit, or Property Line:			

BOTTOM HOLE LOCATION FOR HORIZONTAL HOLE: (LATERALS)

LATERAL #1			
SEC	TWP	RGE	COUNTY
Spot Location			
1/4	1/4	1/4	1/4
Depth of Deviation		Radius of Turn	Direction
Measured Total Depth		True Vertical Depth	Total Length
BHL From Lease, Unit, or Property Line:			

LATERAL #2			
SEC	TWP	RGE	COUNTY
Spot Location			
1/4	1/4	1/4	1/4
Depth of Deviation		Radius of Turn	Direction
Measured Total Depth		True Vertical Depth	Total Length
BHL From Lease, Unit, or Property Line:			

LATERAL #3			
SEC	TWP	RGE	COUNTY
Spot Location			
1/4	1/4	1/4	1/4
Depth of Deviation		Radius of Turn	Direction
Measured Total Depth		True Vertical Depth	Total Length
BHL From Lease, Unit, or Property Line:			